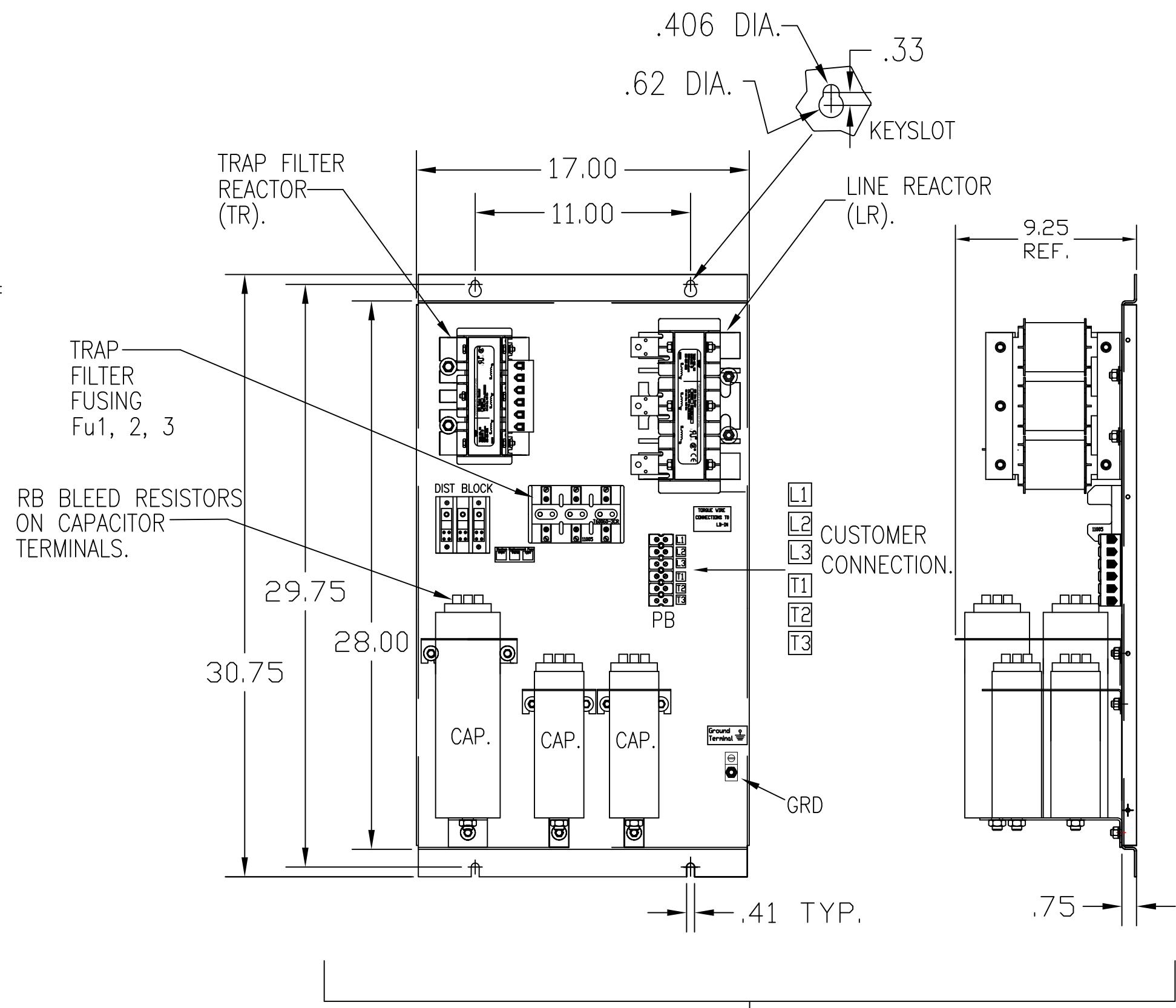
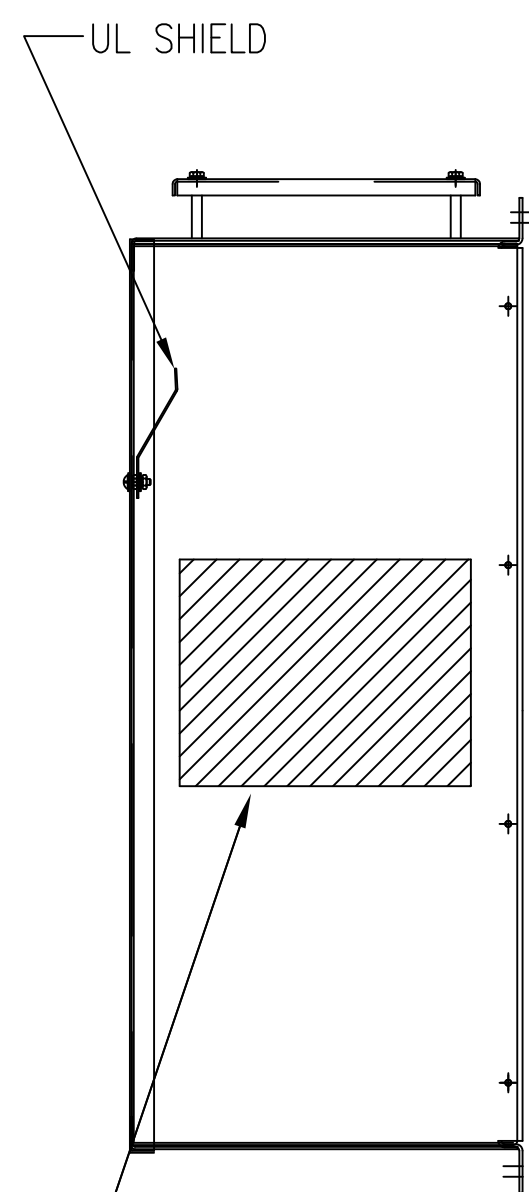
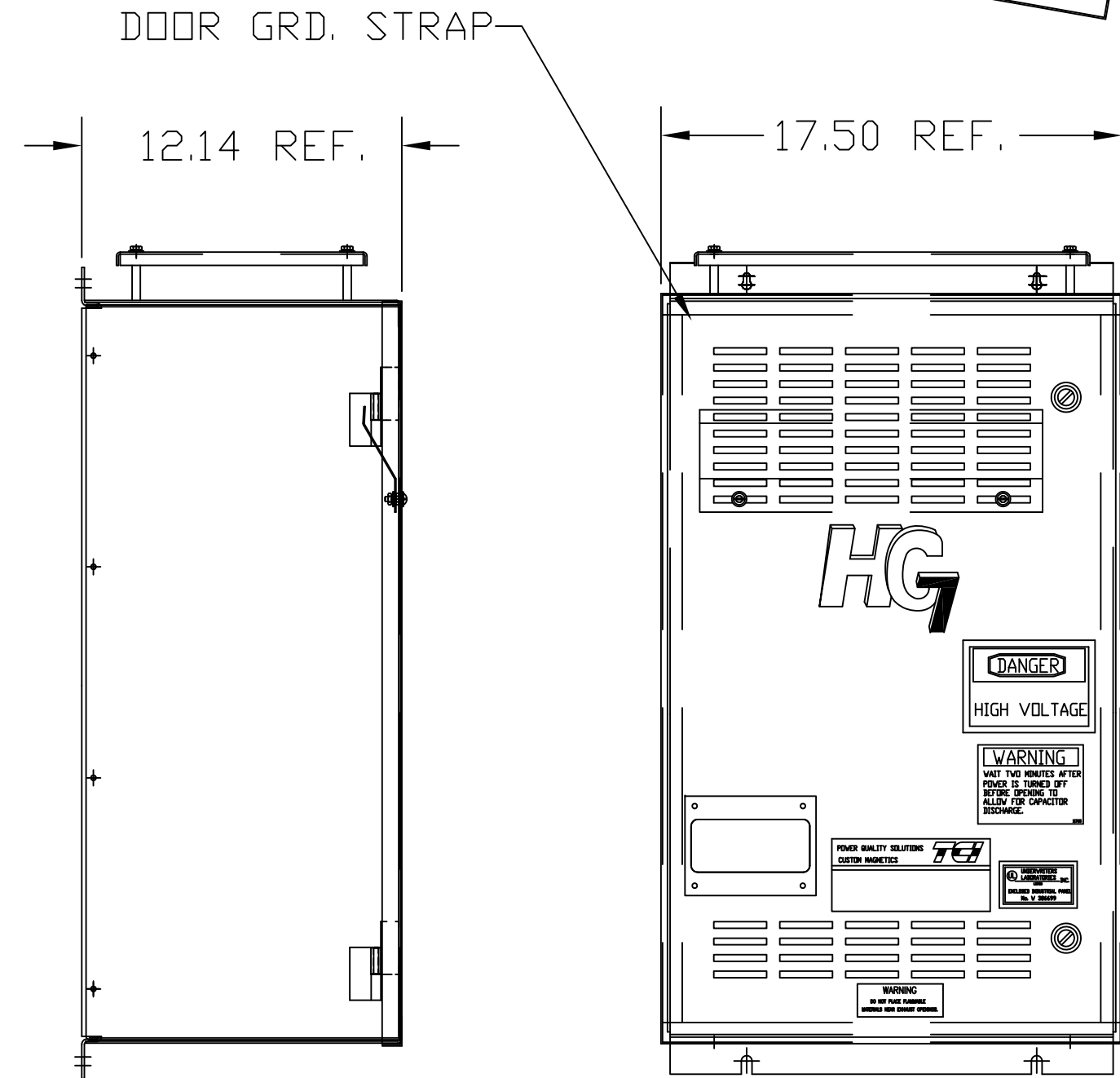
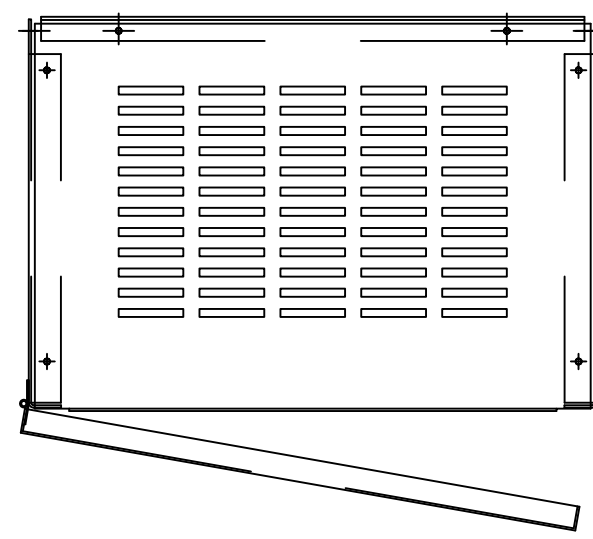


UNIT SPECIFICATIONS:					
KVAR HARMONIC	VOLT	HZ	PHASE	HP	
8	5TH	240	60	3	25
ENCLOSURE		NEMA 1			
APPROX.WT. LBS.		140			

HG25BW01ST	
COMPONENTS	
LINE REACTOR LR	X
TRAP REACTOR TR	X
CAPACITOR CAP	X
TRAP FUSING FU1,2,3	X



CUSTOMER CONNECTIONS
 L1 L2 L3 T1 T2 T3
 AND GROUND LUG.

WIRE SIZE (AWG)	RATED TORQUE (IN-LBS)
2/0-3	50
4-6	45
8	40
10-14	35

HATCHED AREA(S) ARE SUGGESTED CUSTOMER WIRE ENTRANCE AND EXIT LOCATIONS (BOTTOM ENTRANCE ALTERNATE-CONSULT TCI)

ENCLOSURE NOT SHOWN

FOR SCHEMATIC SEE 25179
 CUSTOMER IS RESPONSIBLE FOR INSTALLATION TO MEET ALL NATIONAL AND LOCAL ELECTRICAL CODES.

TCI, LLC CLAIMS PROPRIETARY RIGHTS IN THE MATERIAL HEREIN DISCLOSED. IT IS SUPPLIED WITHOUT PREJUDICE TO ANY PATENT RIGHTS OF TCI AND MAY NOT BE REPRODUCED OR USED TO MANUFACTURE ANYTHING SHOWN THEREIN WITHOUT WRITTEN PERMISSION FROM TCI.				TOLERANCES (EXCEPT AS NOTED): DECIMAL	W132 N10611 Grant Drive Germantown, WI 53022
	C	3042 LUG TORQ CHG	2/21/14	BMZ	
	B	2897 ADD DIST BLK	1/29/13	DSW	.XXX±.01
	A	2702 RVSD UL SHIELD			FRACTIONAL ± 1/32
		COLOR WAS BLACK	1/25/12	RJC	ANGULAR ± 1/2°
NO	REVISION	DATE	BY	SCALE TO FIT	HG25BW01ST, HG7 STANDARD 25HP, 240/3/60, TYPE 1 DRN. BY DSW DATE 4/21/05 DWG. NO. 1025BW01ST SIZE C SHT.1 OF 1