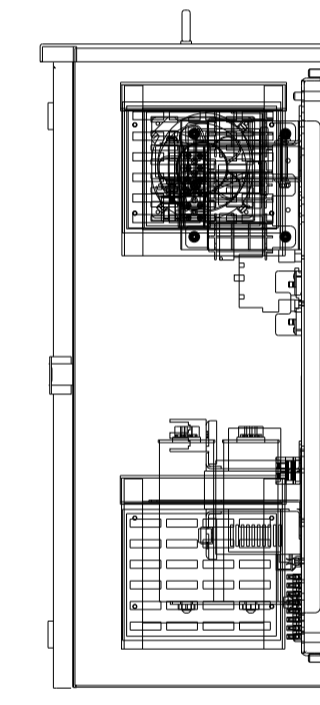
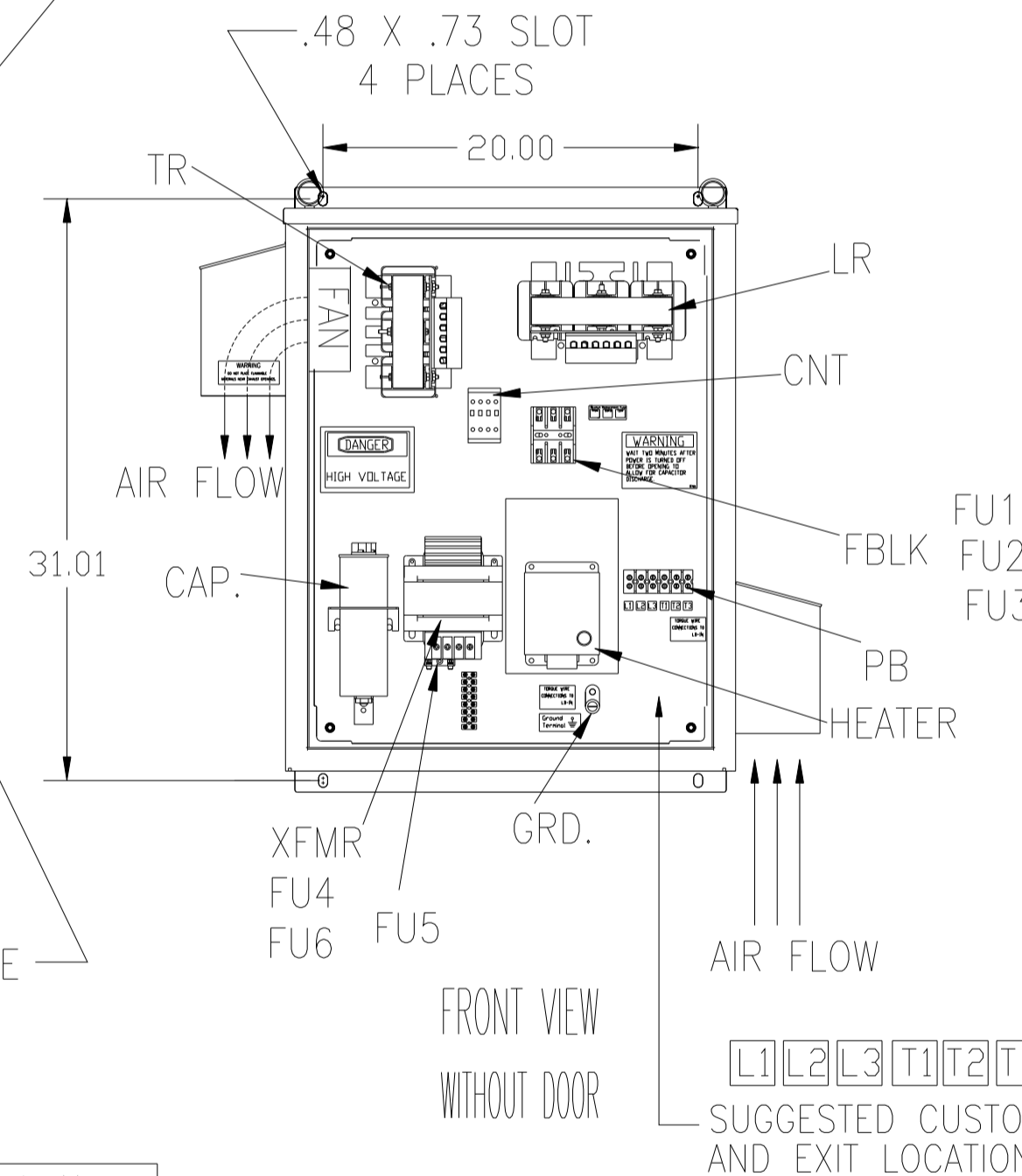
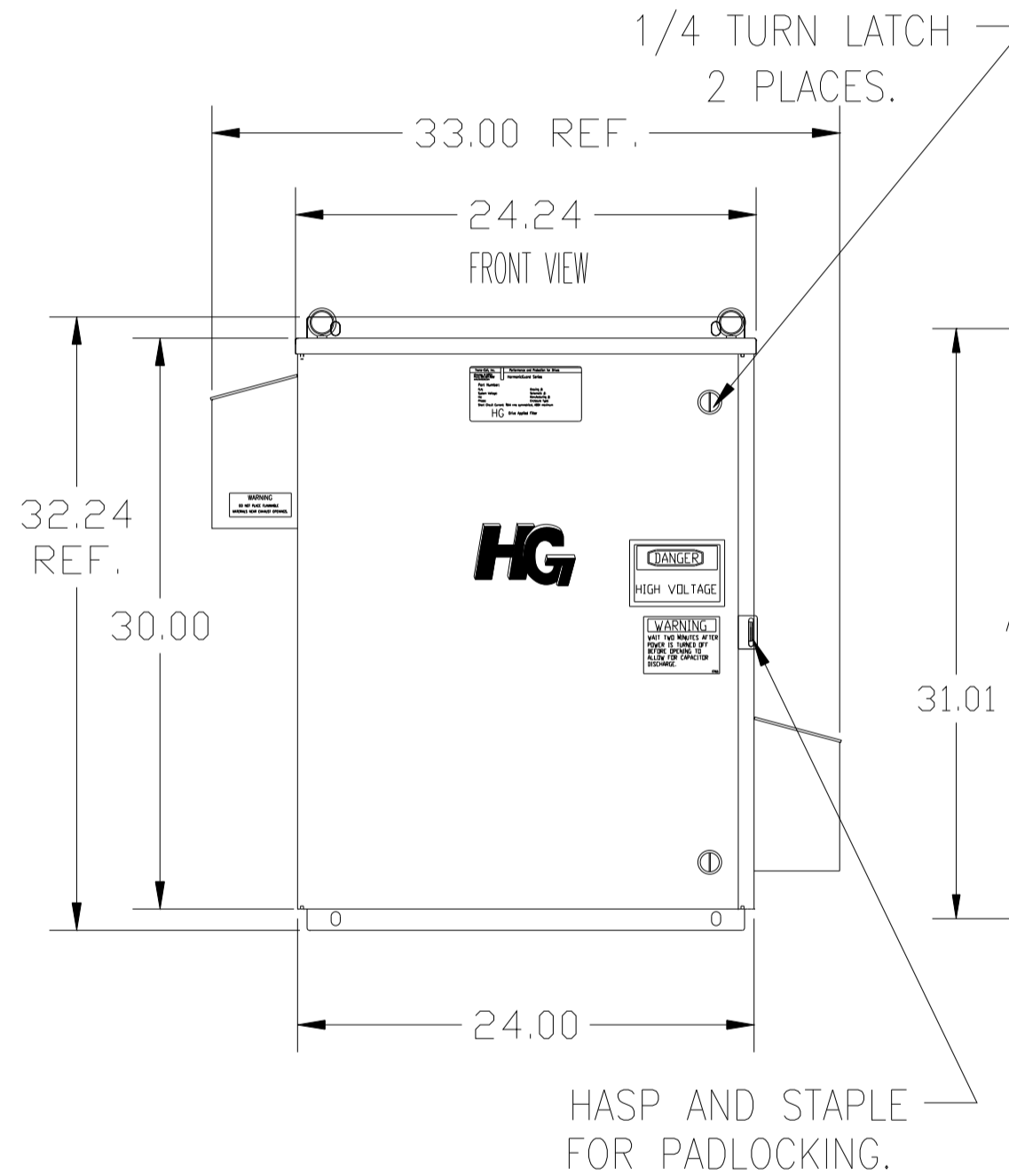
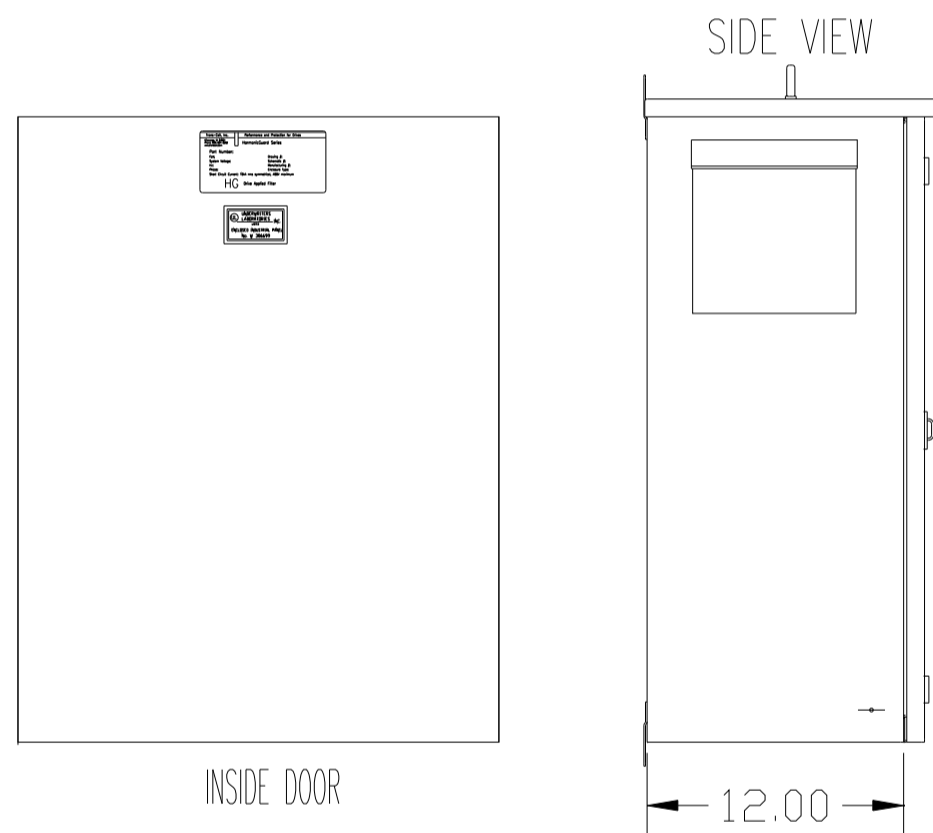
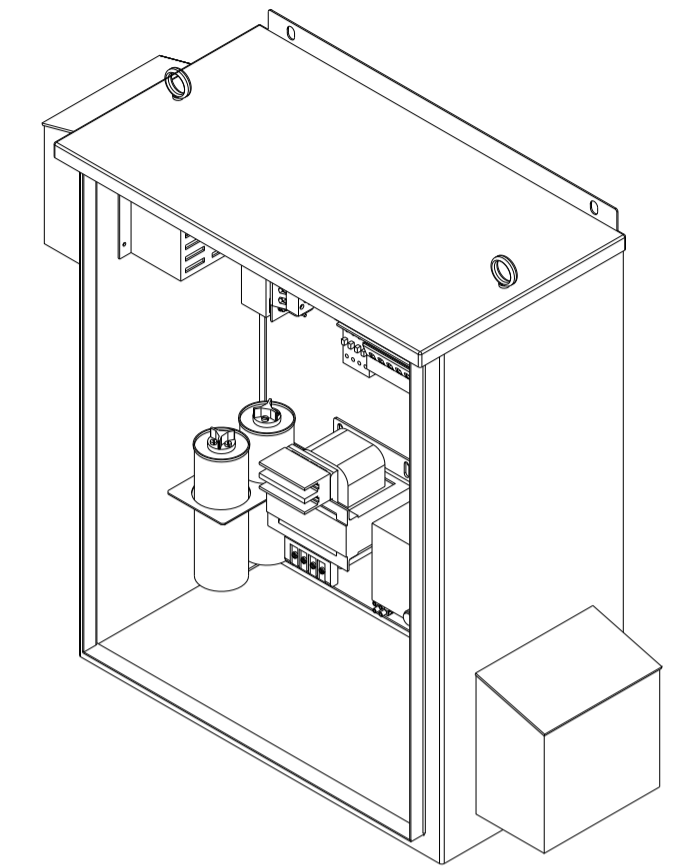
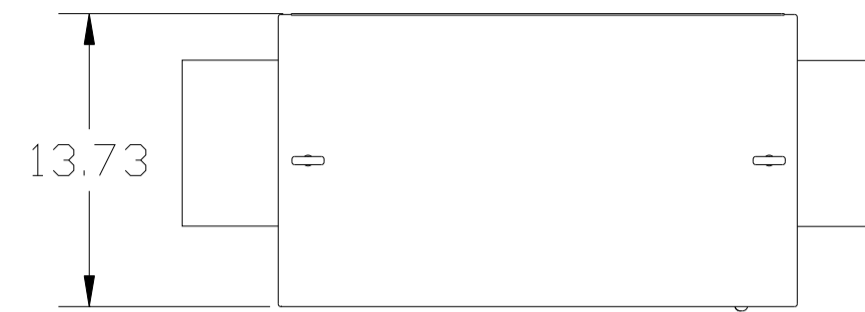
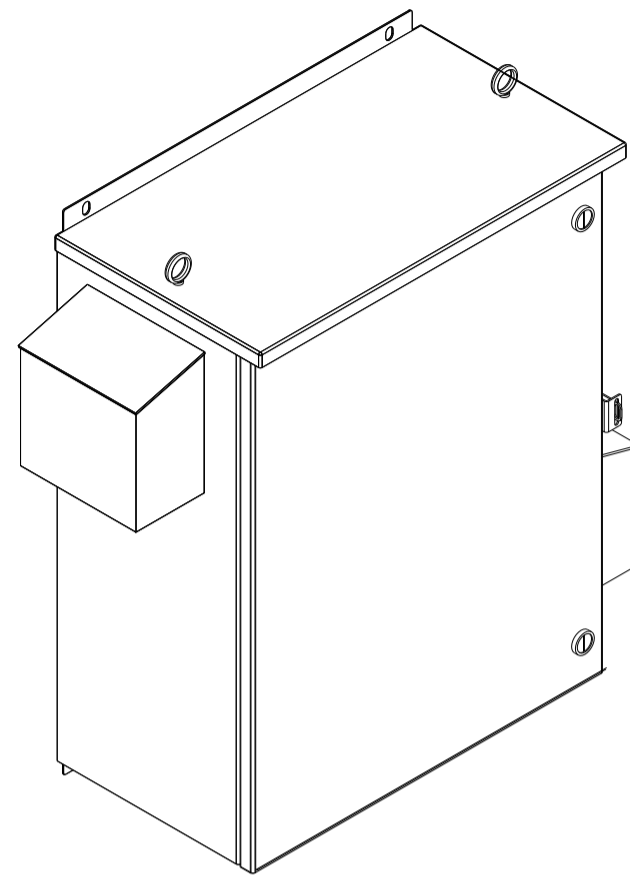


CUSTOMER IS RESPONSIBLE FOR INSTALLATION TO MEET ALL NATIONAL AND LOCAL ELECTRICAL CODES.

NOTE: USE ONLY HUBS OR FITTINGS THAT COMPLY WITH UL514B FOR TYPE 3R ENCLOSURES.

SEE DWG# 26750 FOR SCHEMATIC



UNIT SPECIFICATIONS:					
KVAR	HARMONIC	VOLT	HZ	PHASE	HP
8	5TH	480	60	3	25
ENCLOSURE		UL TYPE 3R.			
COLOR		WHITE			
APPROX.WT. LBS.		145			

SYMBOL	TCI PART NUMBER
LR	KDRF3T
TR	KTR8A65HG
CAP (3 KVAR)	KCAP3A6A
CAP (5 KVAR)	KCAP5A6AB
XFMR.	23896
Fu1, 2, 3	11306
Fu4,6	24009
Fu5	17567
CNT	26739
HEATER (200 WATT)	11638

PB-POWER INPUT BLOCK:  
WIRE RANGE-#18 TO #4 AWG.  
TIGHTENING TORQUE 20 IN-LB.

GROUND LUG:  
WIRE RANGE-1/0 TO #14 AWG.  
TIGHTENING TORQUE 200 IN-LB.

TOLERANCES (EXCEPT AS NOTED)		TCI		7878 N. 86th STREET MILWAUKEE, WI 53224	
DECIMAL		HG25AW03STCH, 25HP 480/3/60 UL TYPE 3R		DRN BY	DATE
XX ±.12				DSW	8/21/08
.XXX±.06		SCALE	APRVD.	DWG. NO.	
FRACTIONAL		TO FIT		C	103724DG
± 1/32					SHT. 1 OF 1
ANGULAR					
± 1/2°					
A 2641 ADD EYEBOLTS	10/21/09	DSW			
NO REVISION	DATE	BY			