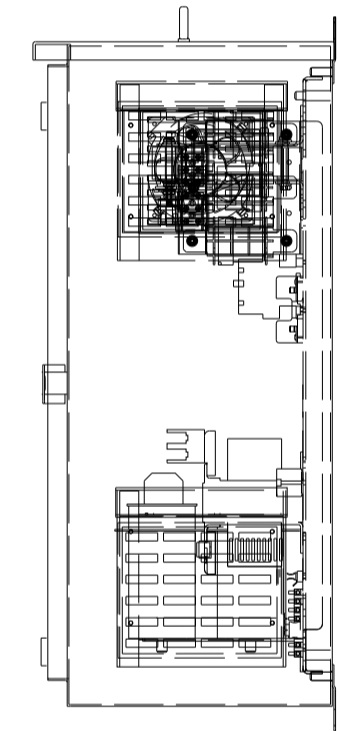
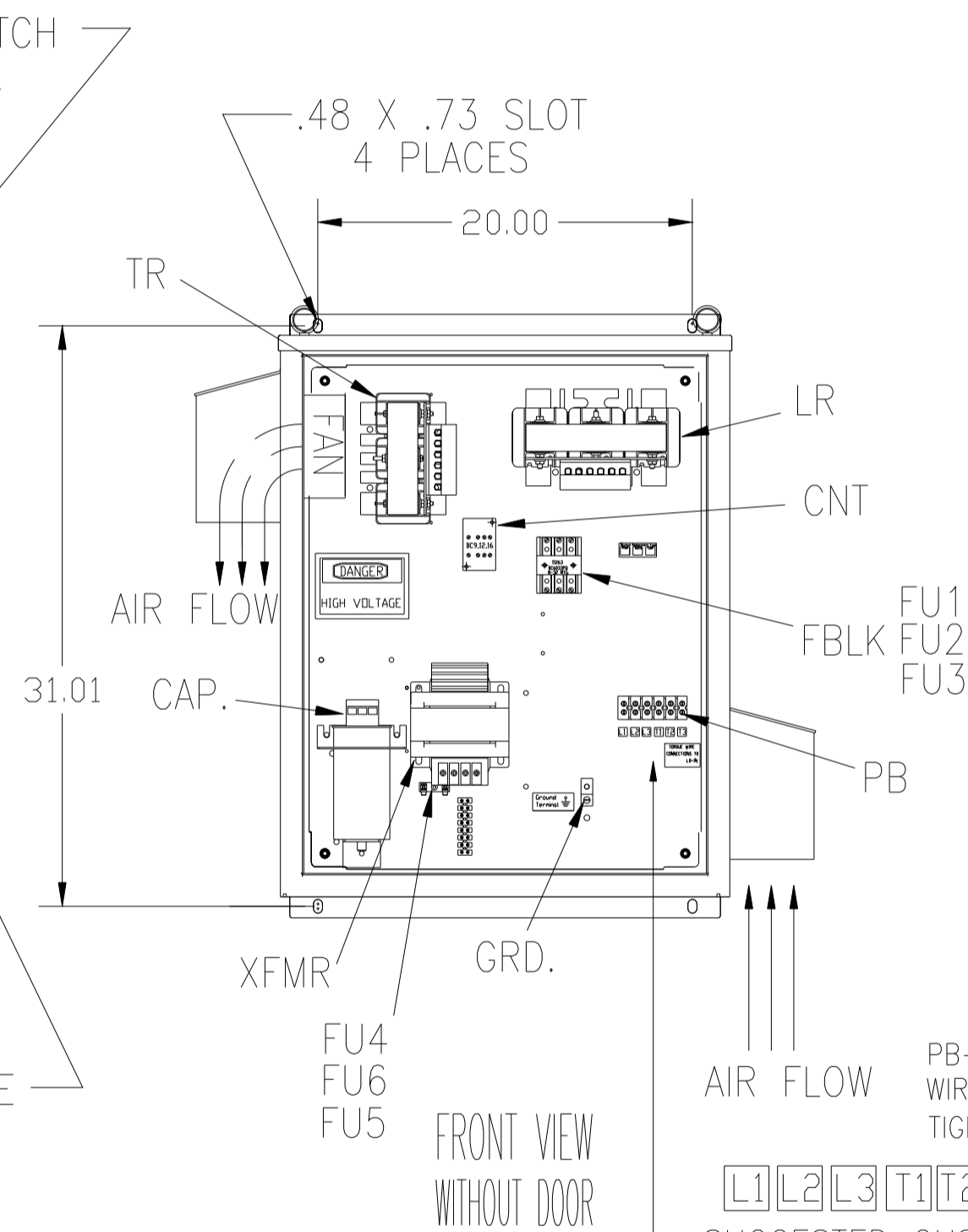
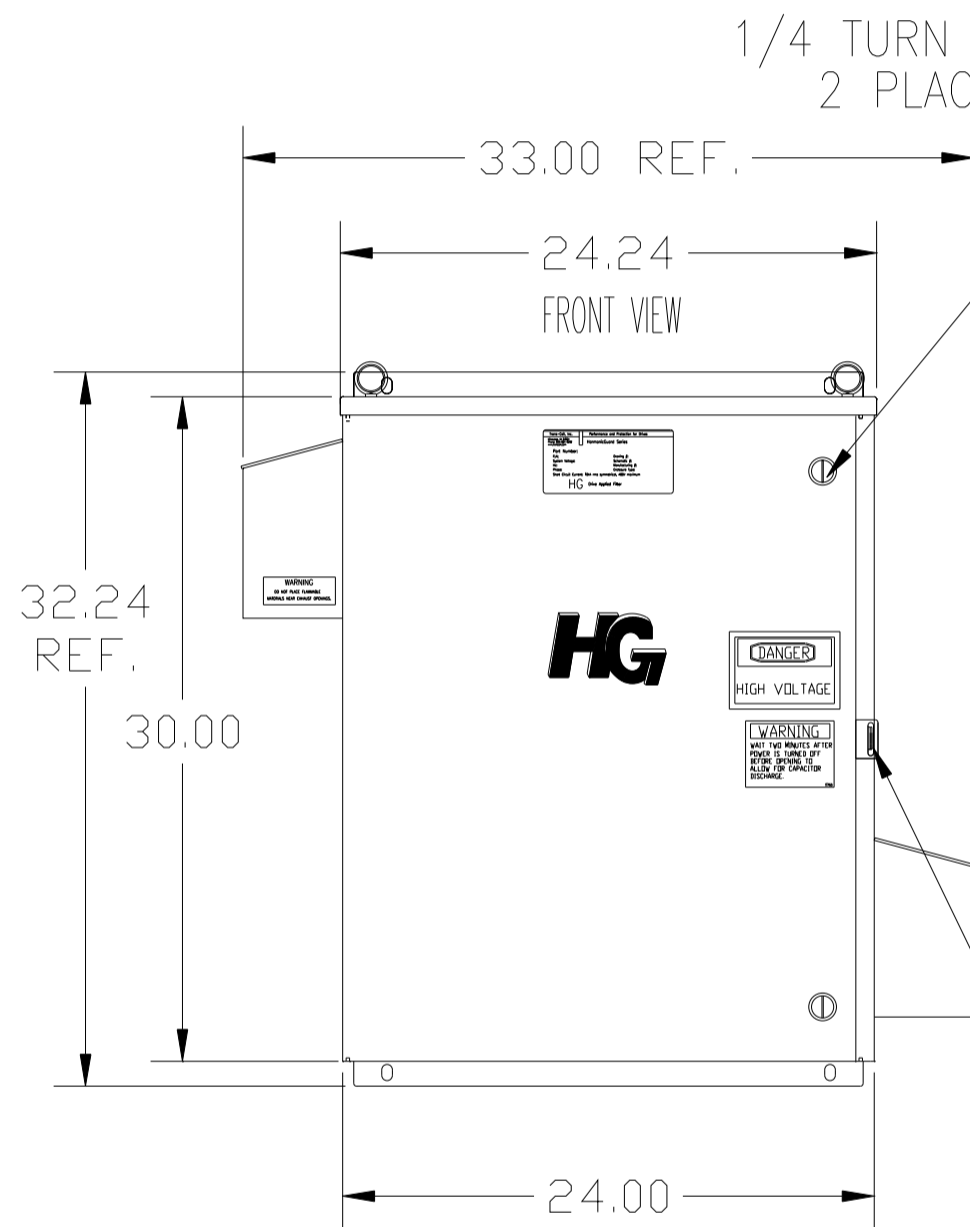
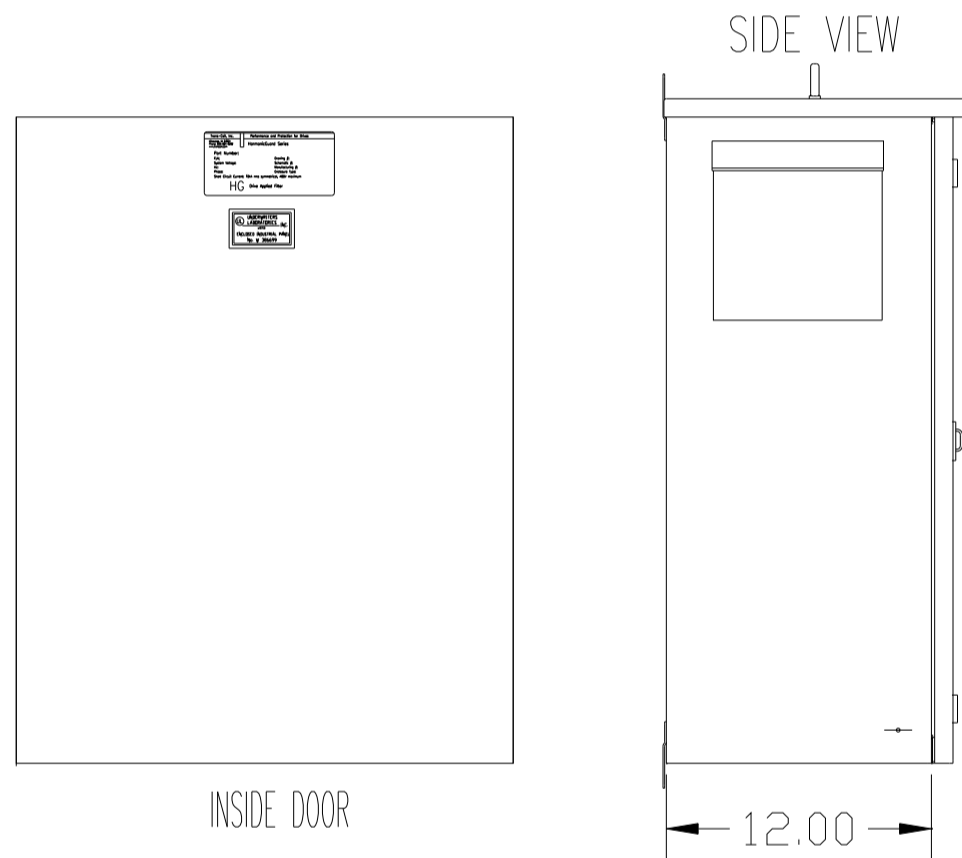
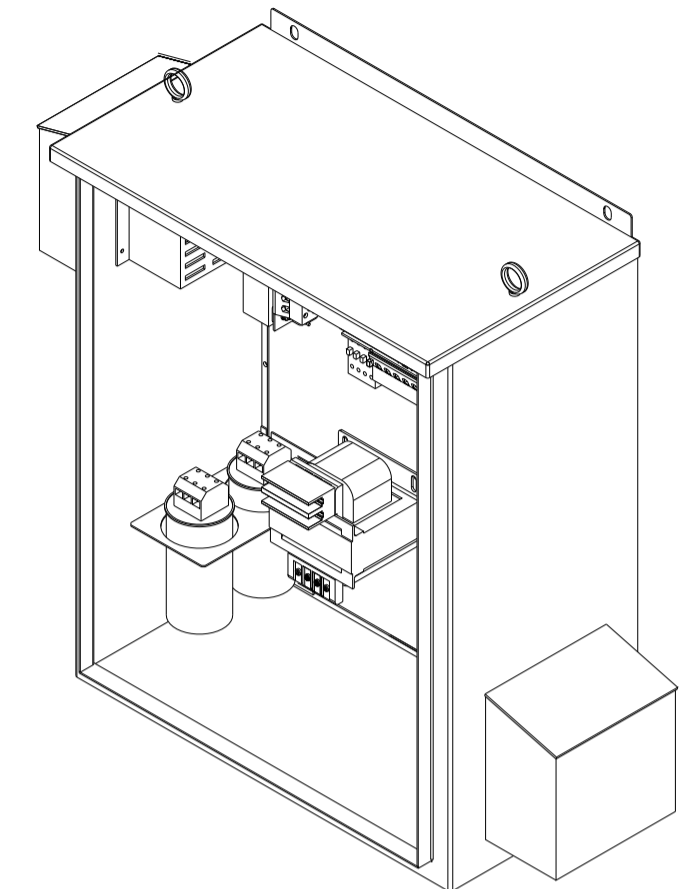
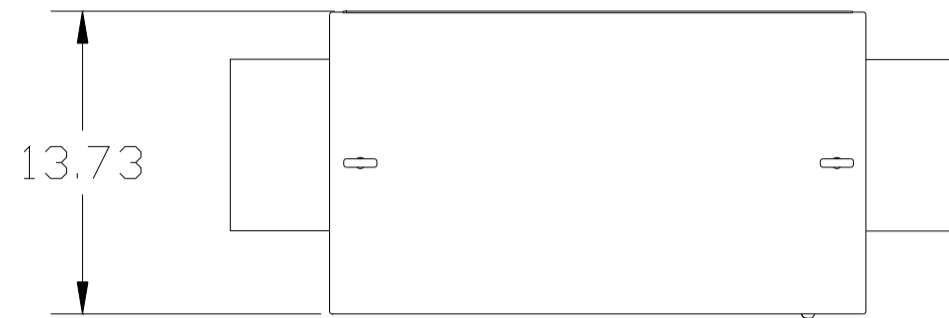


CUSTOMER IS RESPONSIBLE FOR INSTALLATION TO MEET ALL NATIONAL AND LOCAL ELECTRICAL CODES.

NOTE: USE ONLY HUBS OR FITTINGS THAT COMPLY WITH UL514B FOR TYPE 3R ENCLOSURES.

SEE DWG# 26752 FOR SCHEMATIC



GROUND LUG:
WIRE RANGE-1/0 TO #14 AWG.
1/0 AWG thru 2 AWG 50 IN-LBS. MAX.
4 AWG thru 6 AWG 45 IN-LBS. MAX.
8 AWG 40 IN-LBS. MAX.
10 AWG thru 14 AWG 35 IN-LBS. MAX.

PB-POWER INPUT BLOCK:
WIRE RANGE-#18 TO #4 AWG.
TIGHTENING TORQUE 20 IN-LB.

L1 L2 L3 T1 T2 T3

SUGGESTED CUSTOMER WIRE ENTRY AND EXIT LOCATION

HASP AND STAPLE FOR PADLOCKING.

FRONT VIEW WITHOUT DOOR

UNIT SPECIFICATIONS:					
KVAR	HARMONIC	VOLT	HZ	PHASE	HP
8	5TH	480	60	3	25
ENCLOSURE		UL TYPE 3R.			
COLOR		WHITE			
APPROX.WT. LBS.		145			

SYMBOL	TCI PART NUMBER
LR	KDRF3T
TR	KTR8A65HG
CAP (3 KVAR)	27605
CAP (5 KVAR)	27606
XFMR.	23896
Fu1, 2, 3	11306
Fu4,6	24009
Fu5	17567
CNT	12434

ALTERNATE	TCI PART NUMBER
CAP (3 KVAR)	KCAP3A6A
CAP (5 KVAR)	KCAP5A6A

NO	REVISION	DATE	BY	TOLERANCES (EXCEPT AS NOTED)
E	2900 CHG TO ASC CAPS	2/13/13	DSW	DECIMAL
D	2755 CHG BACK TO VISHAY	6/22/11	DSW	.XX ± .12
C	2722 ASC CAP TRIAL	1/21/11	DSW	.XXX ± .06
B	2684 12434 WAS ADD			FRACTIONAL ± 1/32
B	26739	5/27/10	DSW	ANGULAR ± 1/2°
A	2641 ADD EYEBOLTS	10/13/09	DSW	

TCI 7878 N. 86th STREET MILWAUKEE, WI 53224

HG25AW03STC, 25HP
480/3/60 UL TYPE 3R

DRN. BY	DSW	DATE	08/25/08	DWG. NO.	103669DG
SCALE	TO FIT	APRVD.			SHT.1 of 1