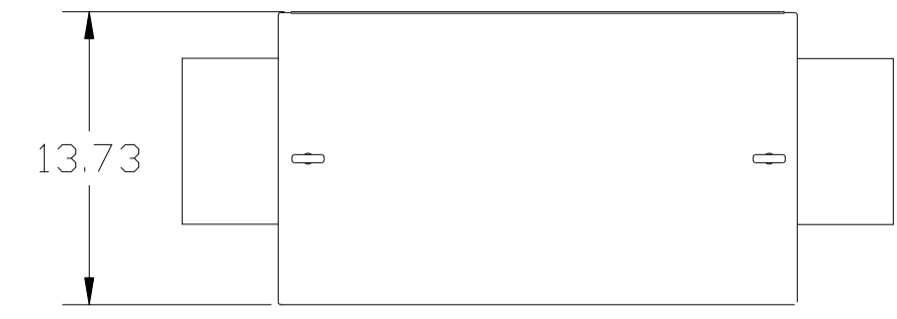
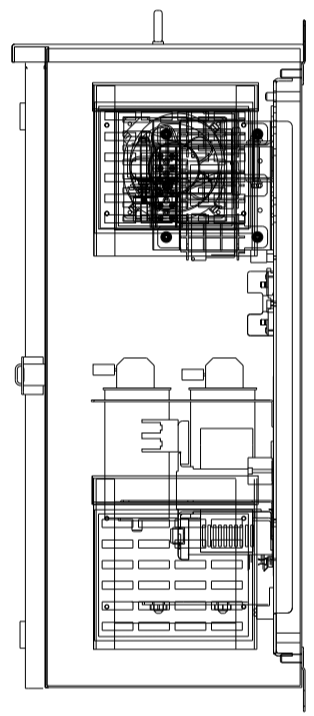
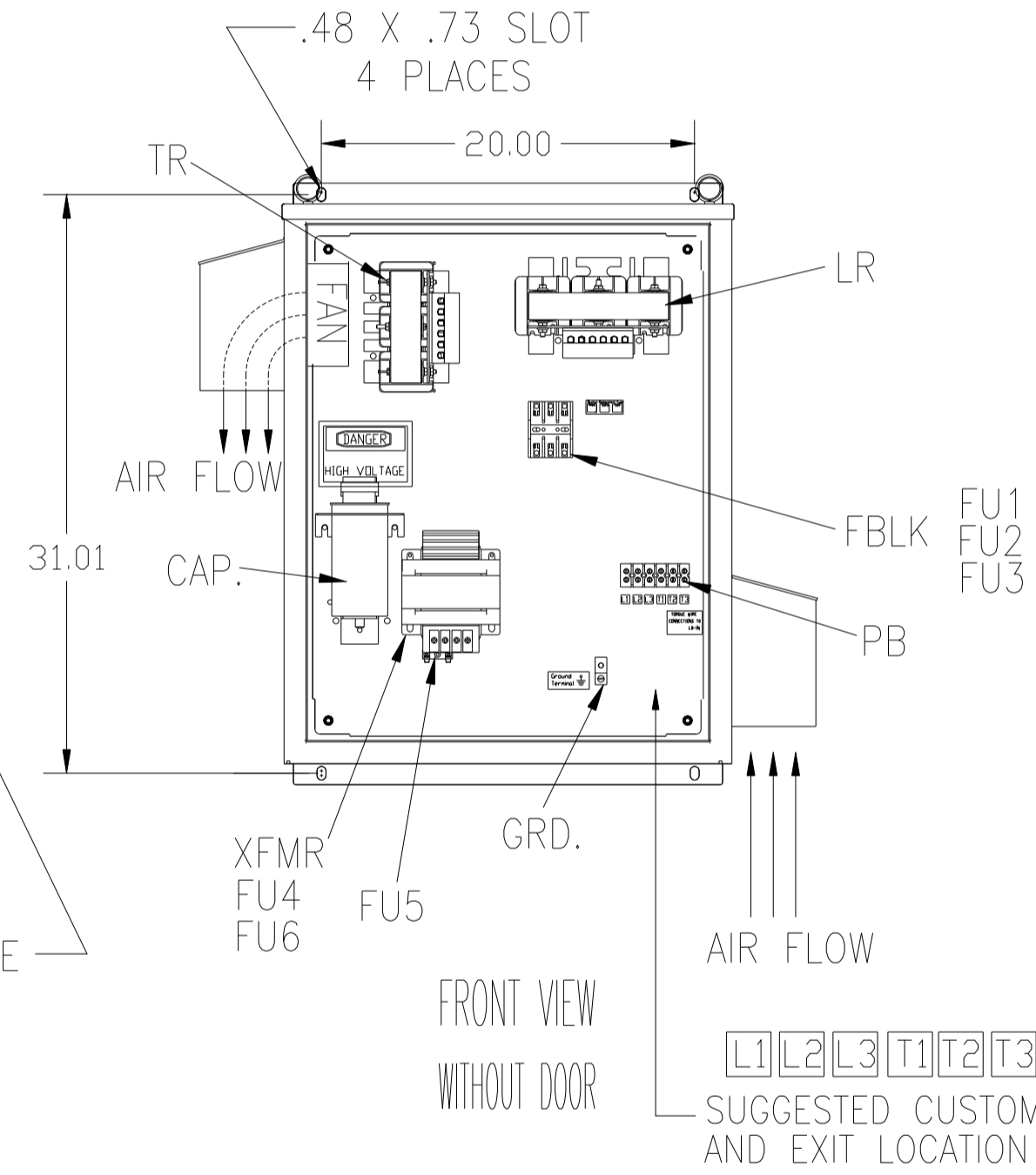
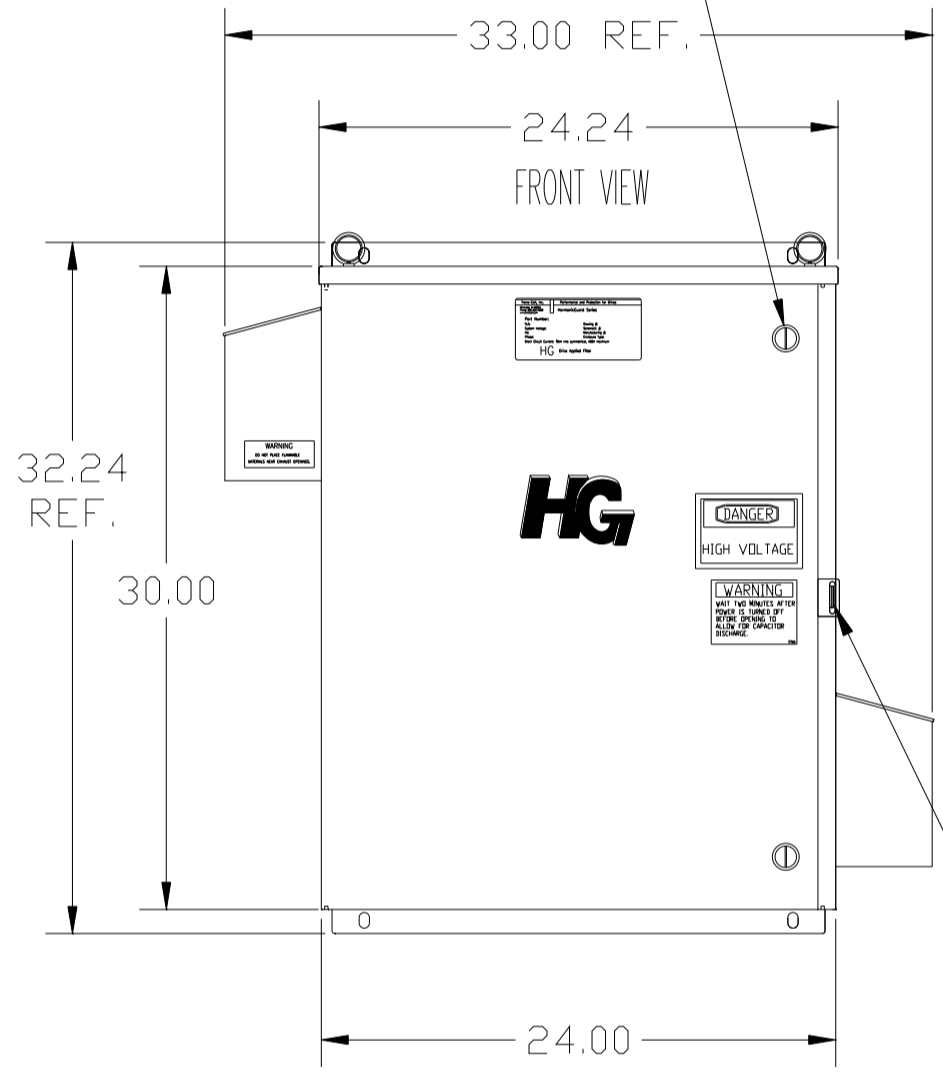
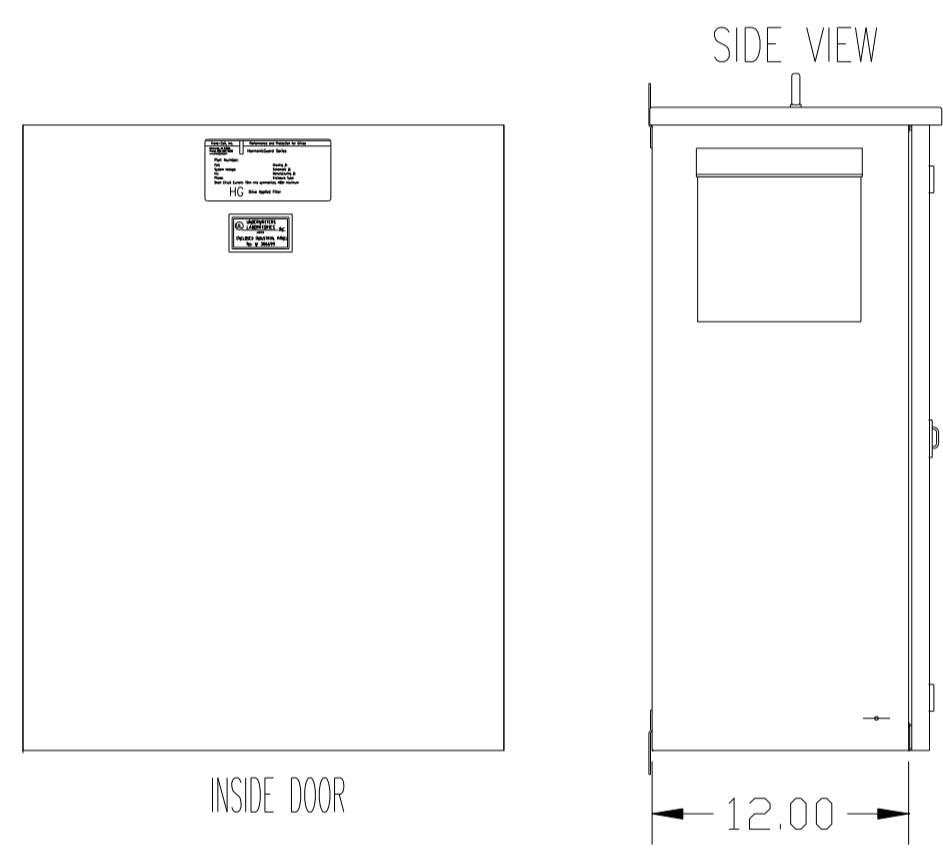


UNIT SPECIFICATIONS:					
KVAR	HARMONIC	VOLT	HZ	PHASE	HP
8	5TH	480	60	3	25
ENCLOSURE		UL TYPE 3R.			
COLOR		WHITE			
APPROX.WT. LBS.		144			

SYMBOL	TCI PART NUMBER
LR	KDRF3T
TR	KTR8A65HG
CAP (3 KVAR)	27605
CAP (5 KVAR)	27606
XFMR.	23896
Fu1, 2, 3	11306
Fu4,6	24009
Fu5	17567



ALTERNATE	TCI PART NUMBER
CAP (3 KVAR)	KCAP3A6A
CAP (5 KVAR)	KCAP5A6AB



INSIDE DOOR

SIDE VIEW

1/4 TURN LATCH
2 PLACES.

HG

HASP AND STAPLE
FOR PADLOCKING.

FRONT VIEW
WITHOUT DOOR

L1 L2 L3 T1 T2 T3
SUGGESTED CUSTOMER WIRE ENTRY
AND EXIT LOCATION

SEE DWG# 26756 FOR SCHEMATIC
NOTE: USE ONLY HUBS OR FITTINGS THAT COMPLY
WITH UL514B FOR TYPE 3R ENCLOSURES.

PB-POWER INPUT BLOCK:
WIRE RANGE-#18 TO #4 AWG.
TIGHTENING TORQUE 20 IN-LB.

GROUND LUG:
WIRE RANGE-1/0 TO #14 AWG.
1/0 AWG thru 2 AWG 50 IN-LBS. MAX.
4 AWG thru 6 AWG 45 IN-LBS. MAX.
8 AWG 40 IN-LBS. MAX.
10 AWG thru 14 WG 35 IN-LBS. MAX.

CUSTOMER IS RESPONSIBLE FOR INSTALLATION
TO MEET ALL NATIONAL AND LOCAL ELECTRICAL CODES.

TOLERANCES (EXCEPT AS NOTED)			TCI 7878 N. 86th STREET MILWAUKEE, WI 53224	
		DECIMAL		
		.XX ±.12	HG25AW03ST, 25HP 480/3/60 UL TYPE 3R	
		.XXX±.06		
C	2900 CHG TO ASC CAPS	3/1/13	DSW	DRN BY DSW DATE 08/26/08 DWG. NO. 103614DG
B	2707 CHG GRD LUG	6/15/11	DSW	
A	2641 ADD EYEBOLTS	10/13/09	DSW	SCALE TO FIT APRVD. C
NO	REVISION	DATE	BY	