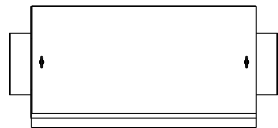
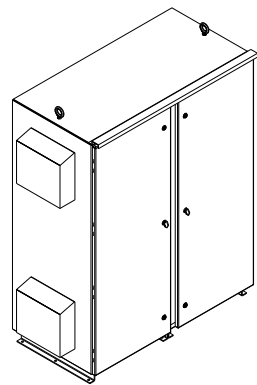


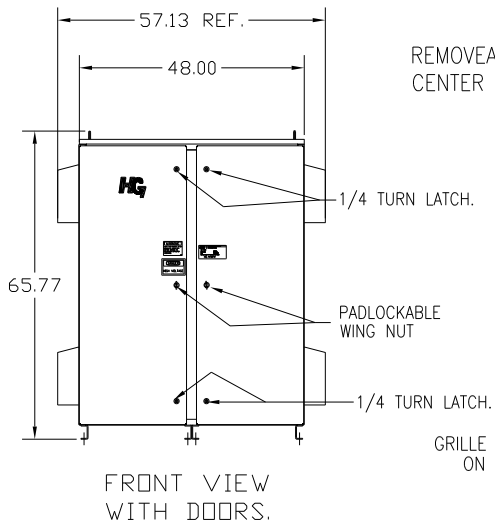
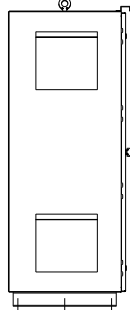
# HG250LW03STC

UNIT SPECIFICATIONS:					
KW	HARMONIC	VOLT	HZ	PHASE	FLA
250	5TH	400	50	3	470
ENCLOSURE		3R			
APPROX.WT. LBS.		1085			

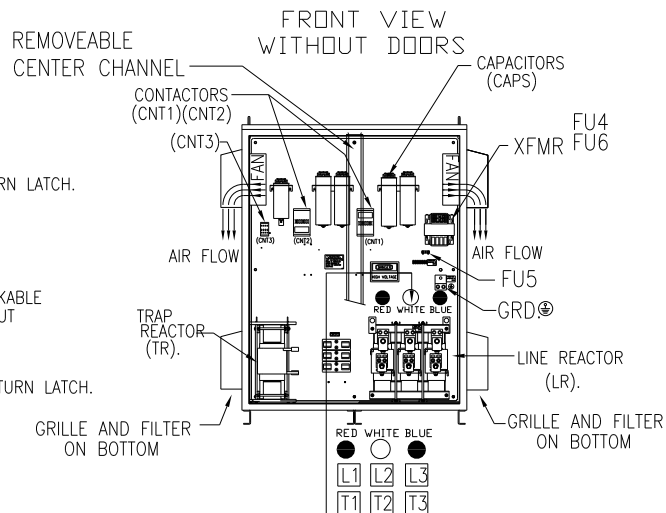
FOR SCHEMATIC SEE DWG# 27703-1



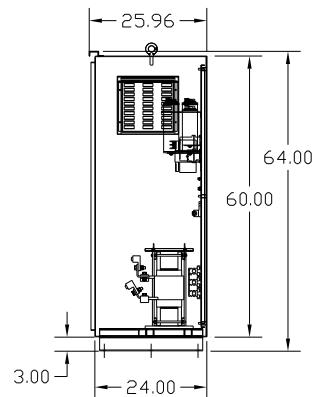
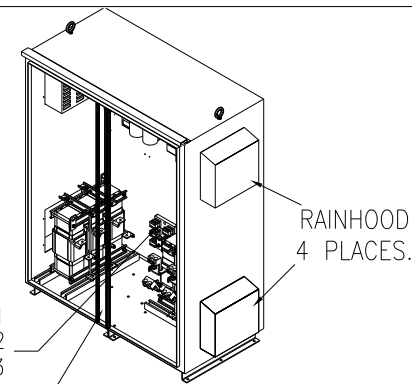
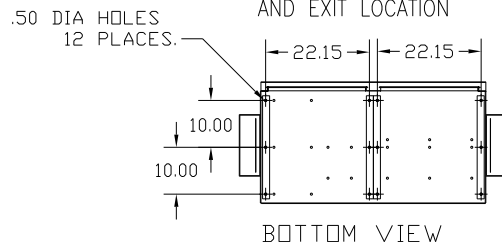
SIDE VIEW



FRONT VIEW WITH DOORS.



SUGGESTED CUSTOMER WIRE ENTRY AND EXIT LOCATION



SIDE VIEW

CUSTOMER IS RESPONSIBLE FOR INSTALLATION TO MEET ALL NATIONAL AND LOCAL ELECTRICAL CODES.

NOTE: USE ONLY HUBS OR FITTINGS THAT COMPLY WITH UL514B FOR TYPE 3R ENCLOSURES.

CUSTOMER CONNECTIONS:  
WIRE RANGE-TWO 600MCM-2  
TIGHTENING TORQUE 500 IN-LB.

GROUND LUG:  
WIRE RANGE-TWO 600MCM-2  
TIGHTENING TORQUE 500 IN-LB.

SYMBOL	TCI PART NUMBER
LR	KDRX33T
TR	KTR102L55HG
CAP1,-8 (20 KVAR)	KCAP20A6B
CAP9 (15 KVAR)	KCAP15A6B
XFMR.	24389
Fu1, 2, 3	12462
Fu4,6	23820
Fu5	17569
CNT1, 2	19246
CNT3	24397

				TOLERANCES (EXCEPT AS NOTED)
				DECIMAL
				.XX ± .03
				.XXX ± .01
				FRACTIONAL
				± 1/32
A	AS BUILT	4/06/2011	DSW	ANGULAR
NO	REVISION	DATE	BY	± 1/2°

**TCI** 7878 N. 86th STREET  
MILWAUKEE, WI 53224

TCI, HG7 Standard, 250kW  
400/3/50, Type 3R, CNT.

DRN. BY	DSW	DATE	4/6/2011	DWG. NO.	B 104686DG
SCALE	TO FIT	APRVD.			SHT. 1 OF 1