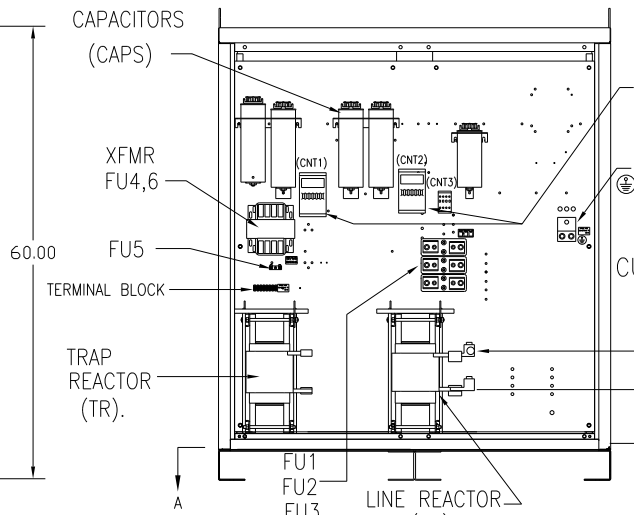
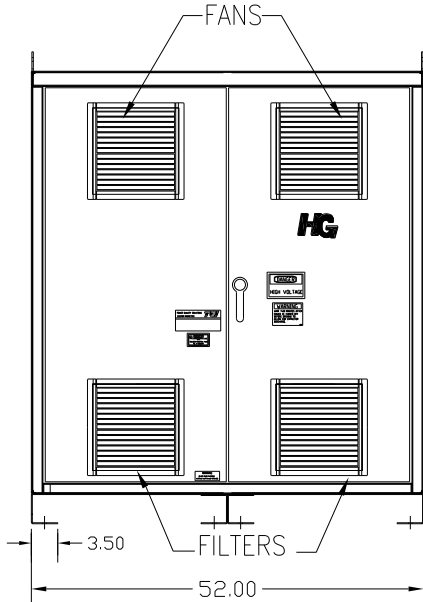
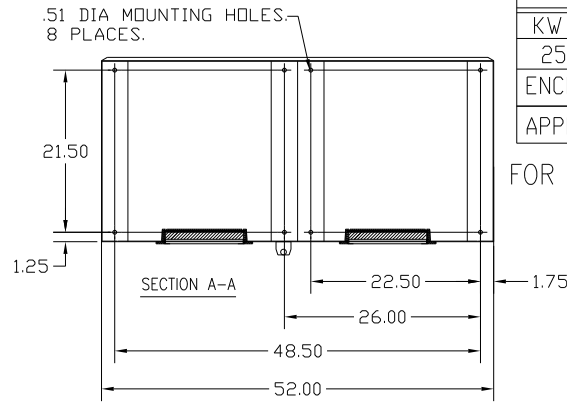
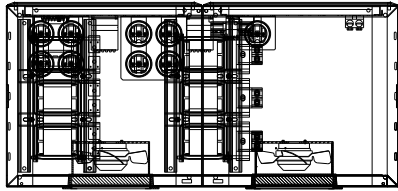
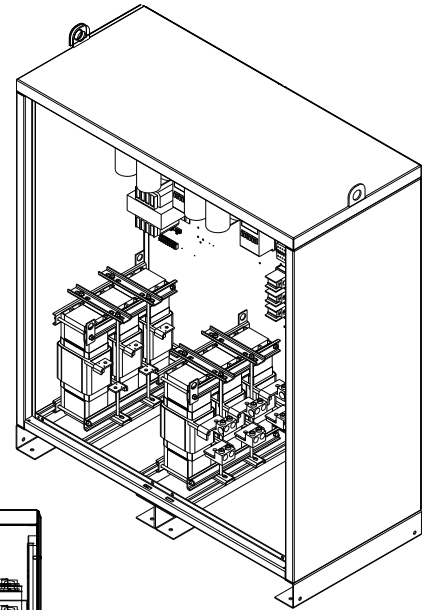


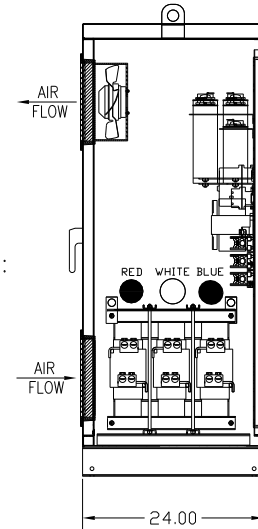
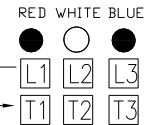
HG250LW01STC

UNIT SPECIFICATIONS:					
KW	HARMONIC	VOLT	HZ	PHASE	FLA
250	5TH	400	50	3	470
ENCLOSURE		NEMA 1			
APPROX.WT. LBS.		1070			

FOR SCHEMATIC SEE DWG# 27703-1



CUSTOMER CONNECTIONS:



CUSTOMER CONNECTIONS:
WIRE RANGE-TWO 600MCM-2
TIGHTENING TORQUE 500 IN-LB.

GROUND LUG:
WIRE RANGE-TWO 600MCM-2
TIGHTENING TORQUE 500 IN-LB.

CUSTOMER IS RESPONSIBLE FOR INSTALLATION TO MEET ALL NATIONAL AND LOCAL ELECTRICAL CODES.

SYMBOL	TCI PART NUMBER
LR	KDRX33T
TR	KTRI02L55HG
CAP1,-8 (20 KVAR)	KCAP20A6B
CAP9 (15 KVAR)	KCAP15A6B
XFMR.	24389
Fu1, 2, 3	12462
Fu4,6	23820
Fu5	17569
CNT1, 2	19246
CNT3	24397

NO	REVISION	DATE	BY	TOLERANCES (EXCEPT AS NOTED)
A	AS BUILT	3/22/2011	DSW	DECIMAL
				.XX ± .03
				.XXX ± .01
				FRACTIONAL ± 1/32
				ANGULAR ± 1/2°

TCI 7878 N. 86th STREET MILWAUKEE, WI 53224

TCI, HG7 Standard, 250kW 400/3/50, Type1, CNT.

DRN BY: DSW DATE: 3/22/2011 DWG NO: 104671DG

SCALE: -- APPRVD: B SHT. 1 OF 1