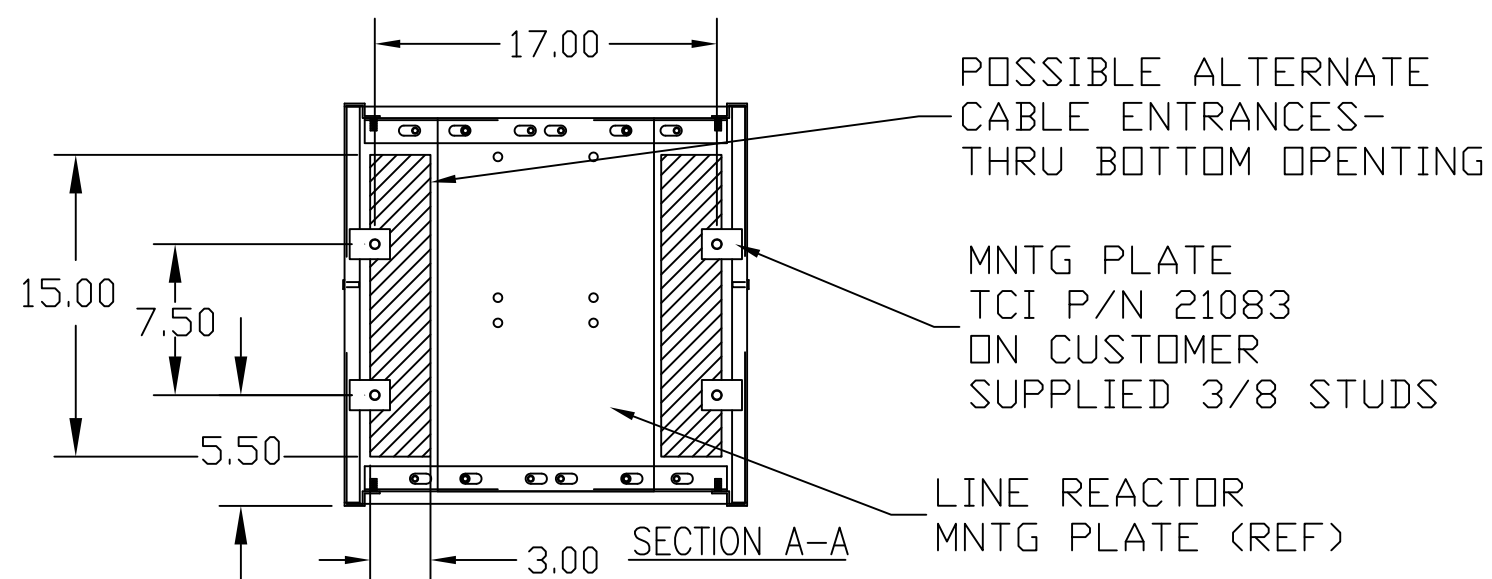
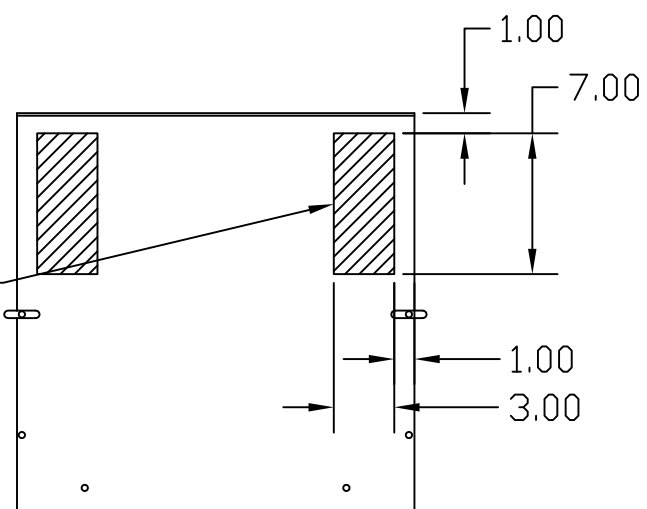
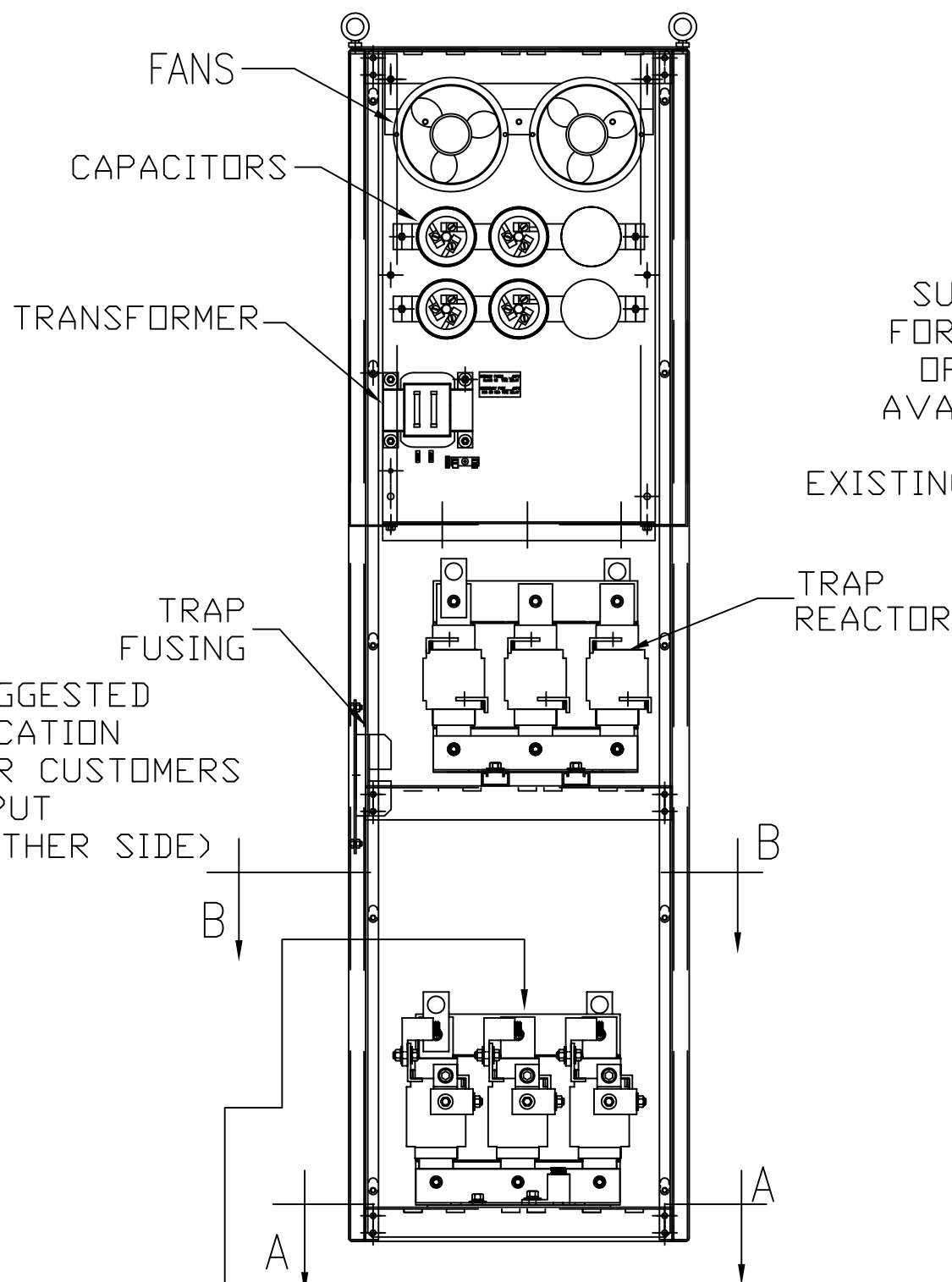
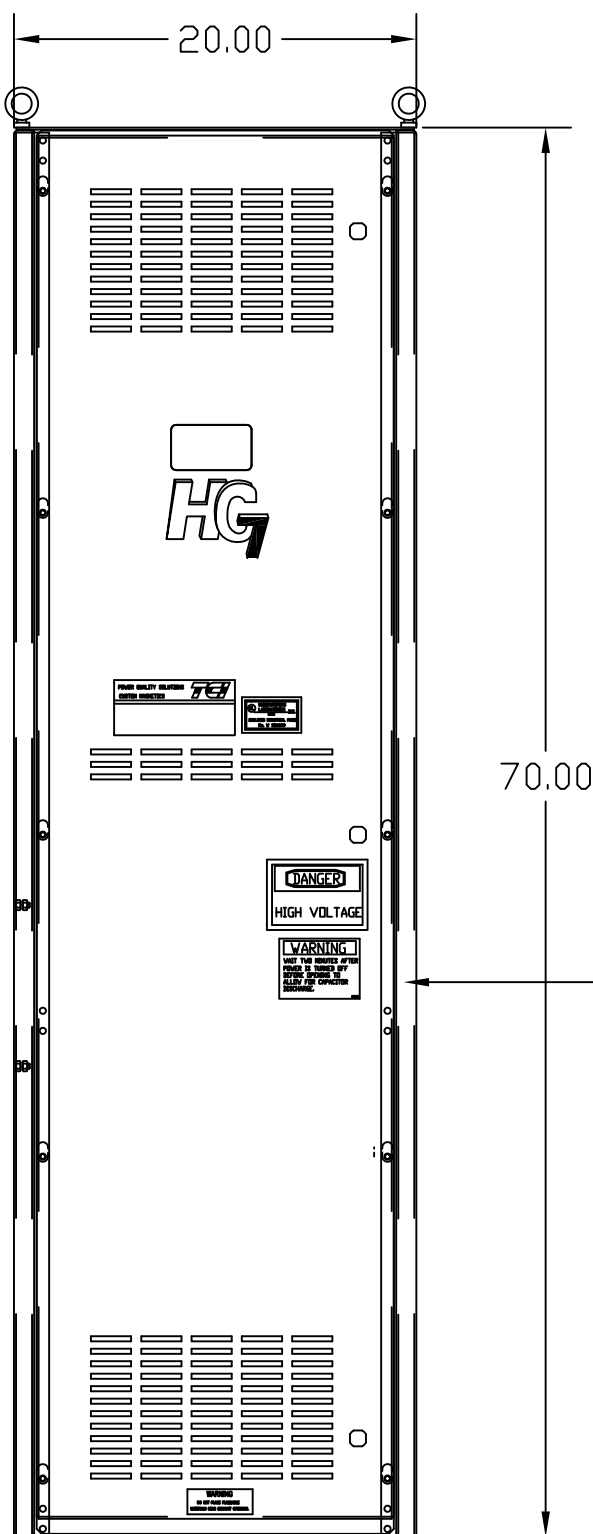
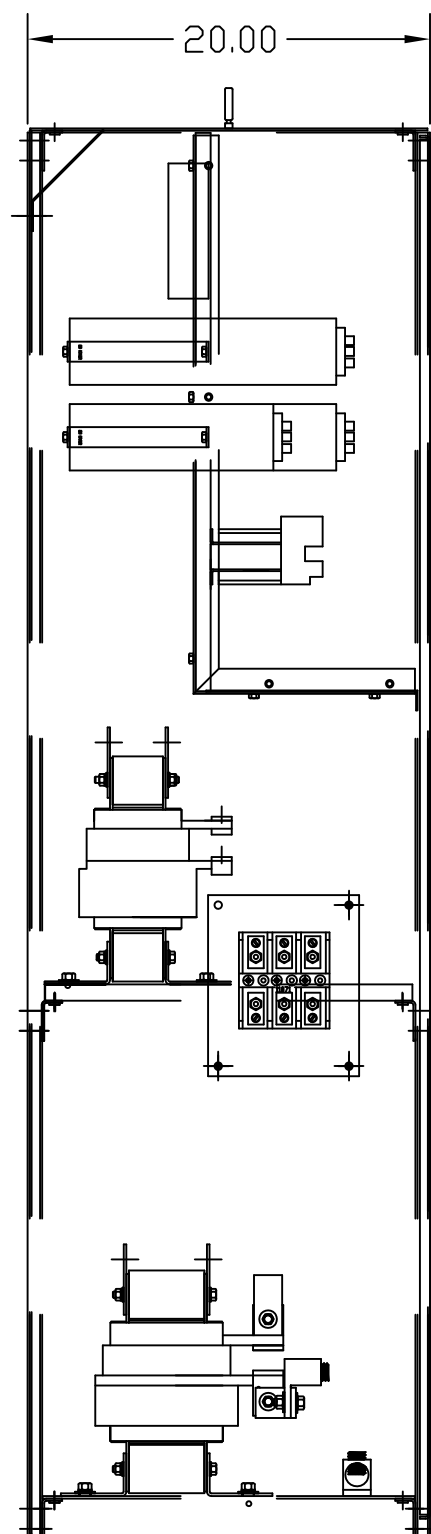


POSSIBLE ALTERNATE CABLE ENTRANCES-REQUIRES MODIFICATION OF AIR FLOW DEFLECTOR

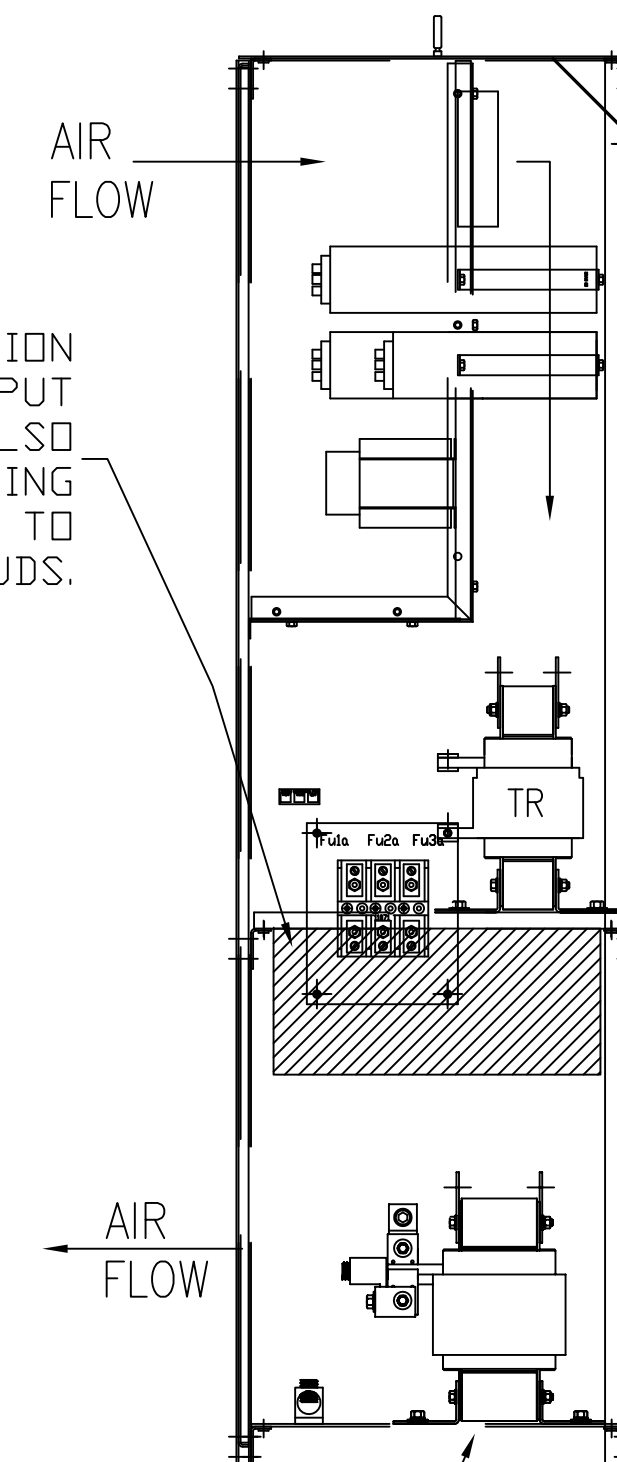


CUSTOMER CONNECTIONS:  
WIRE RANGE-ONE 600MCM-4  
TWO 250MCM-1/0  
TIGHTENING TORQUE 500 IN-LB.

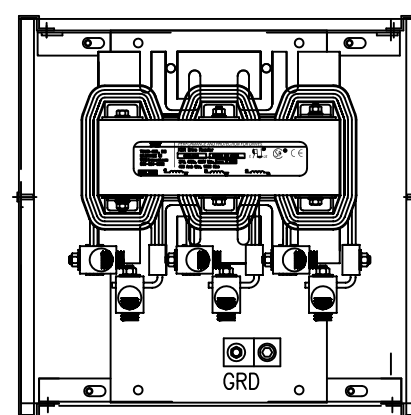
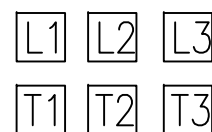
GROUND LUG:  
WIRE RANGE-ONE 600MCM-4  
TWO 250MCM-1/0  
TIGHTENING TORQUE 500 IN-LB.



SUGGESTED LOCATION FOR CUSTOMERS INPUT OPPOSITE SIDE ALSO AVAILABLE BY MOVING FUSES AND TR TO EXISTING MOUNTING STUDS.



CUSTOMER CONNECTIONS:



SECTION B-B

LINE REACTOR

FOR SCHEMATIC SEE 25116

CUSTOMER IS RESPONSIBLE FOR INSTALLATION TO MEET ALL NATIONAL AND LOCAL ELECTRICAL CODES

SYMBOL	TCI PART NUMBER
LR	KDRS42T
TR	KTR75C65HG
CAP1, 2, 3. (20 KVAR)	KCAP20C6B
CAP4. (15 KVAR)	KCAP15C6B
XFMR.	25094
Fu1a;2a;3a	11305
Fu4,6	24073
Fu5	13362

UNIT SPECIFICATIONS:						
KVAR	HARMONIC	VOLT	HZ	PHASE	HP	
75	5TH	600	60	3	250	
ENCLOSURE		NEMA 1				
APPROX.WT. LBS.		505				

TCI, LLC CLAIMS PROPRIETARY RIGHTS IN THE MATERIAL HEREIN DISCLOSED. IT IS SUPPLIED WITHOUT PREJUDICE TO ANY PATENT RIGHTS OF TCI AND MAY NOT BE REPRODUCED OR USED TO MANUFACTURE ANYTHING SHOWN THEREIN WITHOUT WRITTEN PERMISSION FROM TCI.

NO	REVISION	DATE	BY	TOLERANCES (EXCEPT AS NOTED):
B	2786 REMOVE COLOR	11/14/11	DSW	DECIMAL .XX ±.03 .XXX±.01
A	2516, CAP 18612			FRACTIONAL ± 1/32
	CAP WAS 17817	9/30/07	RJC	ANGULAR ± 1/2°
NO	REVISION	DATE	BY	

**TCI**® W132 N10611 Grant Drive  
Germantown, WI 53022

HG250CW01ST, HG7 STANDARD  
250 HP, 600/3/60, TYPE 1

DRN. BY DSW DATE 03/17/05 DWG. NO. 102497DG  
SCALE TO FIT SIZE C SHT.1 OF 1