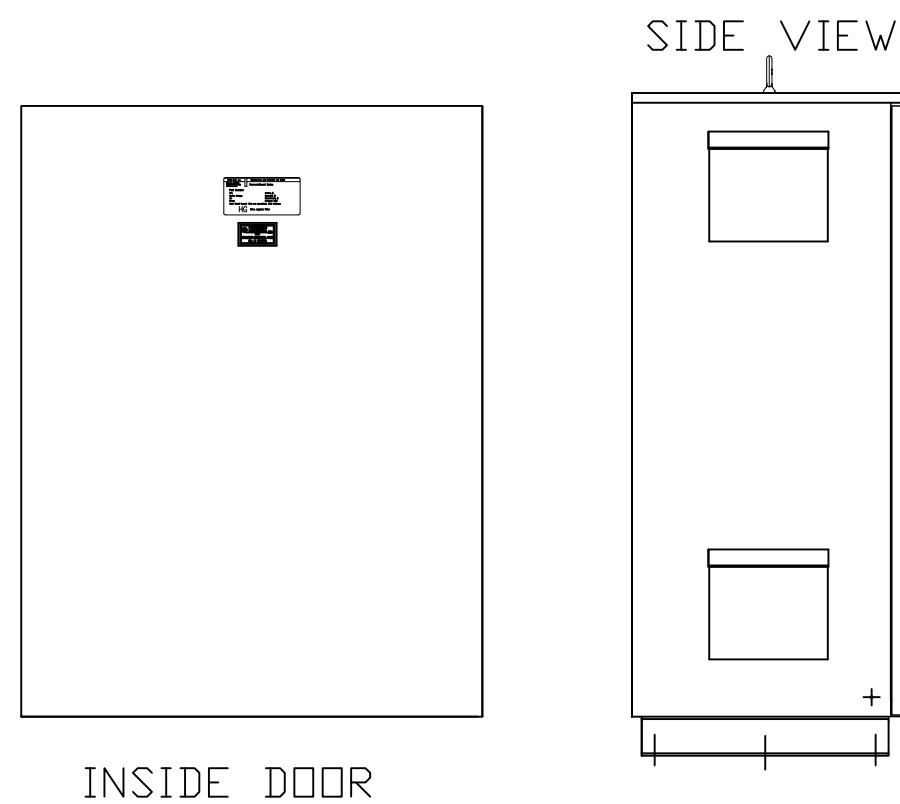
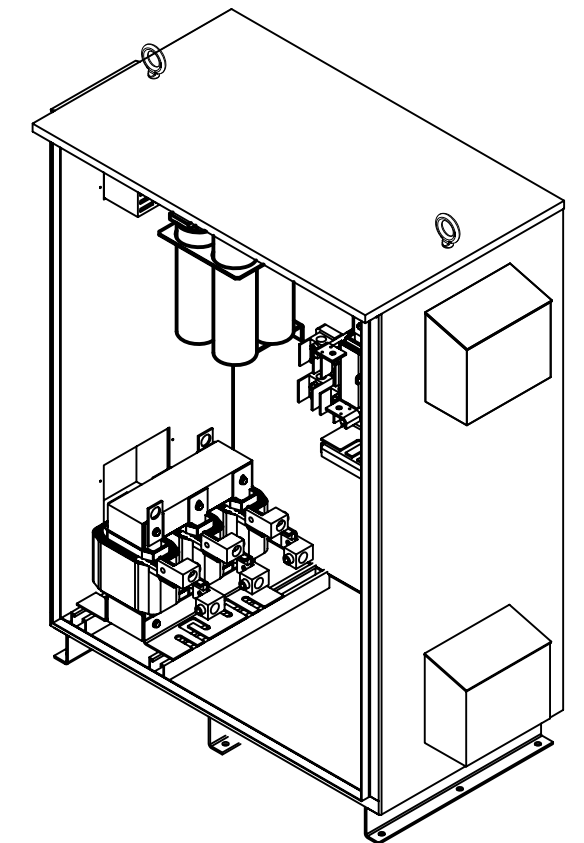
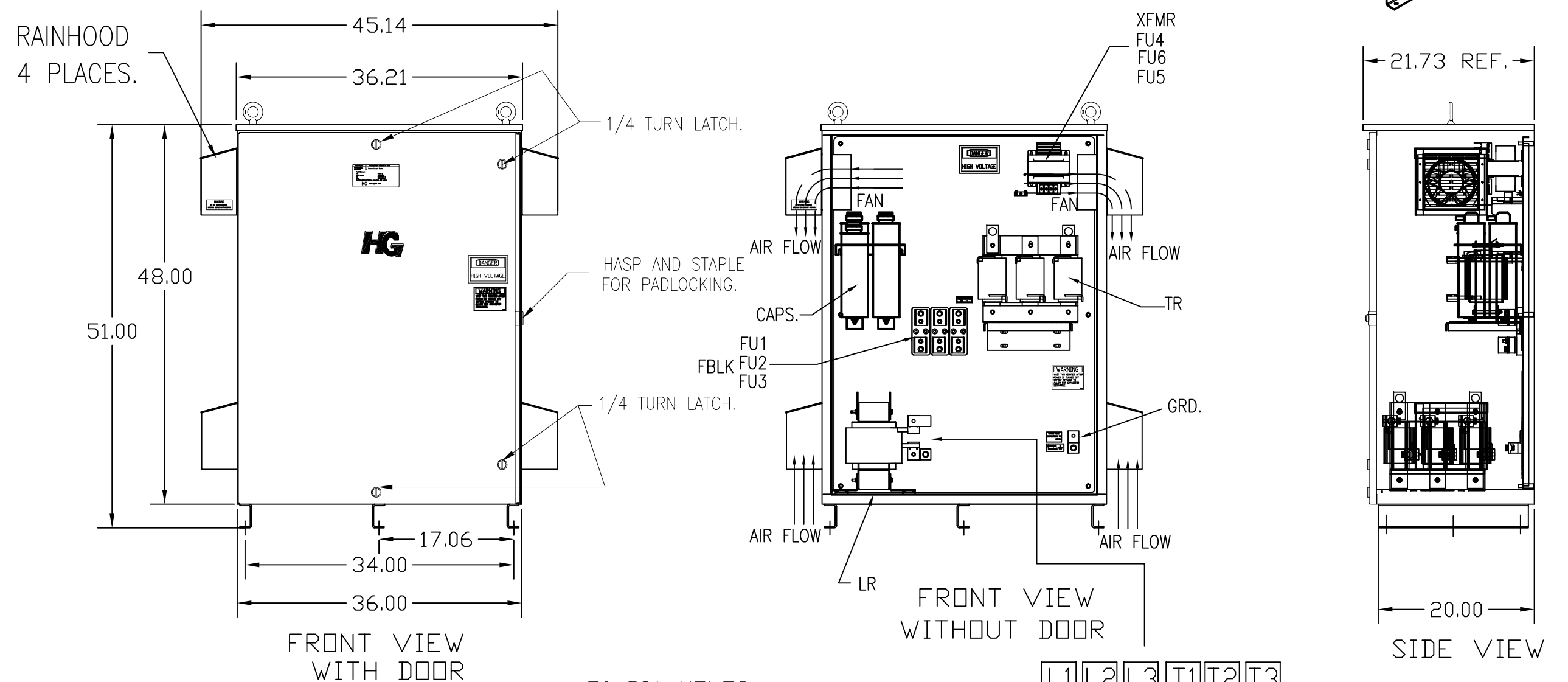


SEE DWG# 26757 FOR SCHEMATIC

CUSTOMER IS RESPONSIBLE FOR INSTALLATION TO MEET ALL NATIONAL AND LOCAL ELECTRICAL CODES.

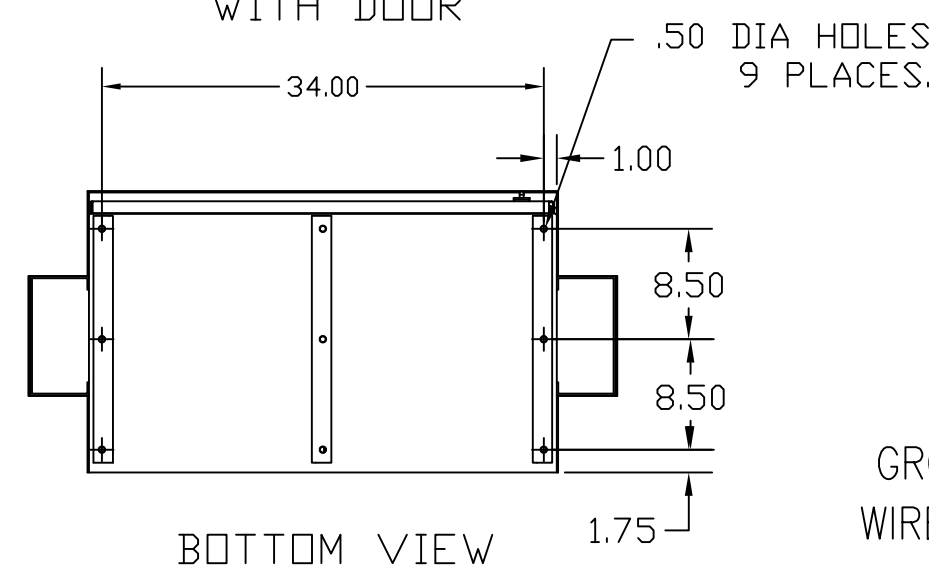


INSIDE DOOR



SYMBOL	TCI PART NUMBER
LR	KDRS2T
TR	KTR75A65HG
CAP.1,2,3 (20 KVAR)	27609
CAP.4 (15 KVAR)	27608
XFMR.	23899
Fu1;2;3	13333
Fu4,6	14106
Fu5	23977

ALTERNATE	TCI PART NUMBER
CAP.1,2,3. (20 KVAR)	KCAP20A6B
CAP.4 (15 KVAR)	KCAP15A6B



L1 L2 L3 T1 T2 T3
SUGGESTED CUSTOMER WIRE ENTRY AND EXIT LOCATION

GROUND LUG:
WIRE RANGE—ONE 600MCM-4
TWO 250MCM-1/0
TIGHTENING TORQUE 500 IN-LB.

CUSTOMER CONNECTION OUTPUT:
WIRE RANGE—ONE 600MCM-4
TWO 250MCM-1/0
TIGHTENING TORQUE 500 IN-LB.

UNIT SPECIFICATIONS:					
KVAR	HARMONIC	VOLT	HZ	PHASE	HP
75	5TH	480	60	3	250
ENCLOSURE		UL TYPE 3R- COLOR WHITE			
APPROX.WT. LBS.		547			

TCI, LLC CLAIMS PROPRIETARY RIGHTS IN THE MATERIAL HEREIN DISCLOSED. IT IS SUPPLIED WITHOUT PREJUDICE TO ANY PATENT RIGHTS OF TCI AND MAY NOT BE REPRODUCED OR USED TO MANUFACTURE ANYTHING SHOWN THEREIN WITHOUT WRITTEN PERMISSION FROM TCI.				TOLERANCES (EXCEPT AS NOTED) DECIMAL	W132 N10611 Grant Drive Germantown, WI 53022 HG250AW03ST, 250HP 480/3/60 UL TYPE 3R
				.XX ±.12	
				.XXX±.06	
	B	2900 CHG TO ASC CAPS	3/6/13	DSW	
A	2641 ADD EYEBOLTS	10/13/09	DSW	ANGULAR ± 1/2°	DRN. BY DSW DATE 09/15/08 DWG. NO. 103624DG
NO	REVISION	DATE	BY		SCALE TO FIT SIZE C SHT.1 OF 1