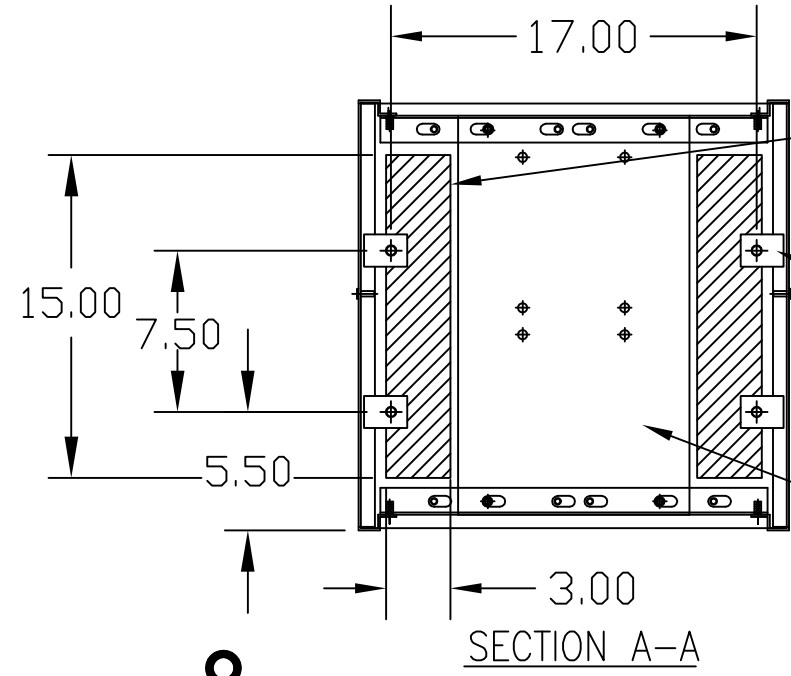
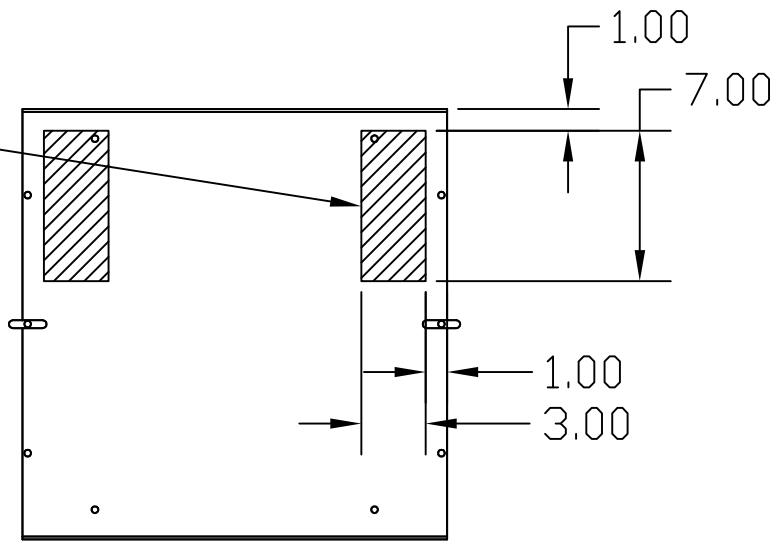


HG250AW01STC	
COMPONENTS	
LINE REACTOR LR	X
TRAP REACTOR TR	X
CAPACITOR CAP	X
TRAP FUSING FU1,2,3	X
TRANSFORMER XFMR	X
XFMR PRIMARY FUSING FU4,6	X
CONTACTOR CNT	X

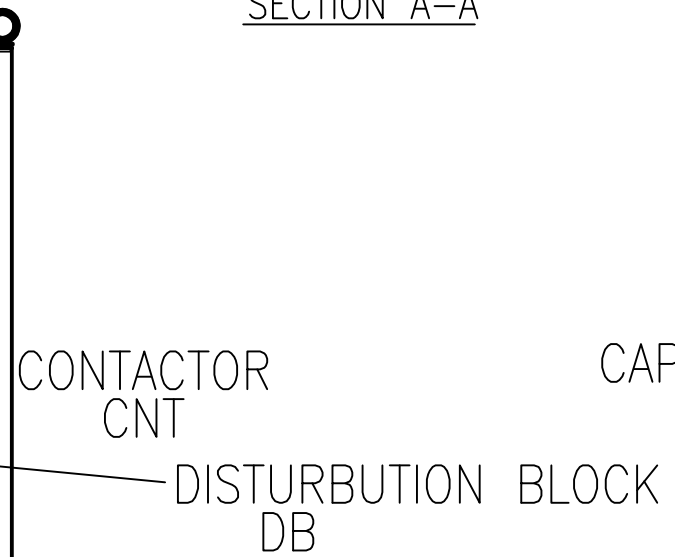
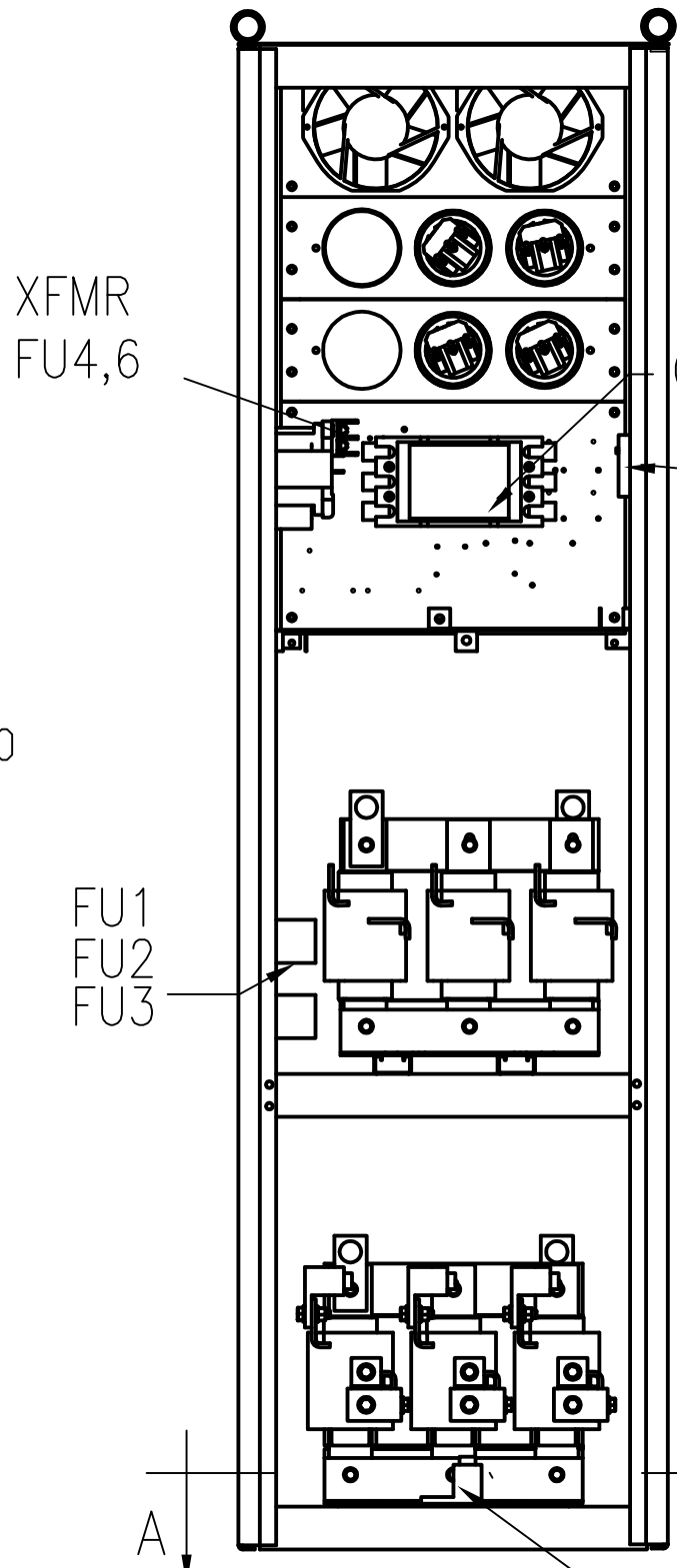
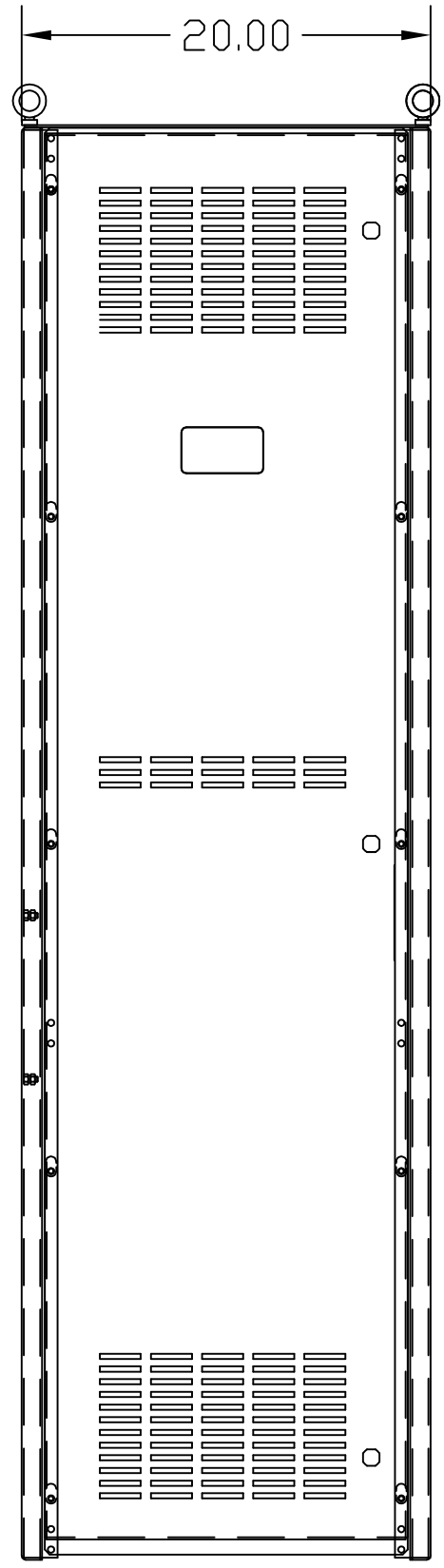
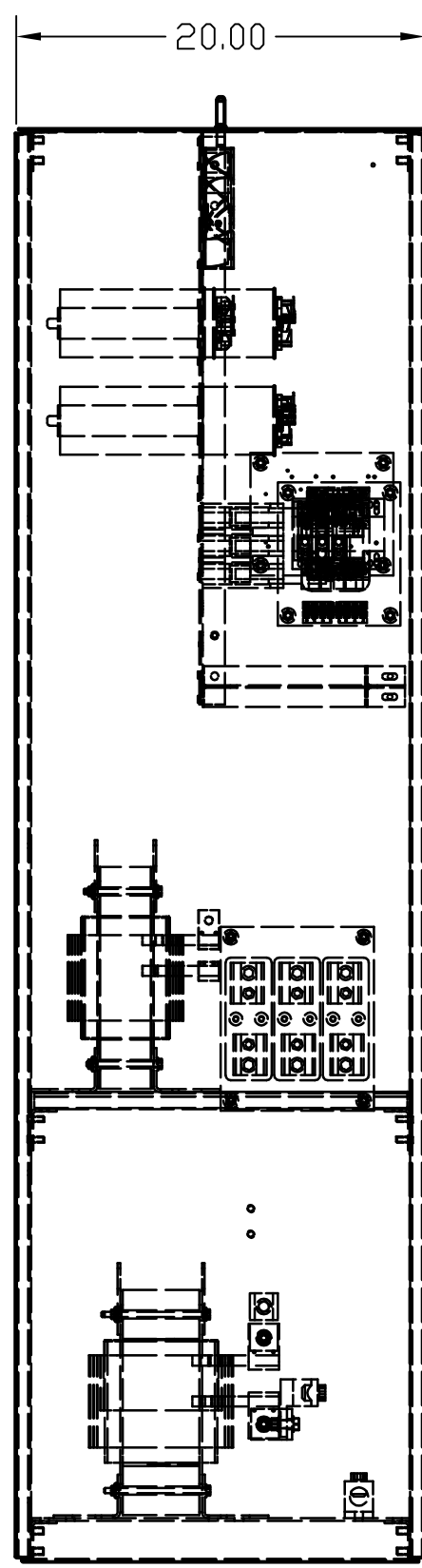
POSSIBLE ALTERNATE CABLE ENTRANCES-REQUIRES MODIFICATION OF AIR FLOW DEFLECTOR



POSSIBLE ALTERNATE CABLE ENTRANCES-THRU BOTTOM OPENING

MNTG PLATE TCI P/N 21083 ON CUSTOMER SUPPLIED 3/8 STUDS

SERIES LINE REACTOR MNTG PLATE (REF)



L1 L2 L3
CUSTOMER CONNECTION INPUT:
WIRE RANGE-ONE 600MCM-4
TWO 250MCM-1/0
TIGHTENING TORQUE 500 IN-LB.

CUSTOMER CONNECTION OUTPUT:
WIRE RANGE-ONE 600MCM-4
TWO 250MCM-1/0
TIGHTENING TORQUE 500 IN-LB.

T1 T2 T3

GROUND LUG:
WIRE RANGE-ONE 600MCM-4
TWO 250MCM-1/0
TIGHTENING TORQUE 500 IN-LB.

UNIT SPECIFICATIONS:						
KVAR	HARMONIC	VOLT	HZ	PHASE	HP	
75	5TH	480	60	3	250	
ENCLOSURE	NEMA 1					
FEATURES	W/CONTACTOR					
APPROX.WT. LBS.	530					

FOR SCHEMATIC SEE DWG# 26690-1

CUSTOMER IS RESPONSIBLE FOR INSTALLATION TO MEET ALL NATIONAL AND LOCAL ELECTRICAL CODES.

TCI, LLC CLAIMS PROPRIETARY RIGHTS IN THE MATERIAL HEREIN DISCLOSED. IT IS SUPPLIED WITHOUT PREJUDICE TO ANY PATENT RIGHTS OF TCI AND MAY NOT BE REPRODUCED OR USED TO MANUFACTURE ANYTHING SHOWN THEREIN WITHOUT WRITTEN PERMISSION FROM TCI.	NO	REVISION	DATE	BY	TOLERANCES (EXCEPT AS NOTED) DECIMAL	W132 N10611 Grant Drive Germantown, WI 53022 HG250AW01STC, HG7, 250HP 480/3/60, W/CONTACTOR DRN. BY DSW DATE 8/04/08 DWG. NO. 103514DG SCALE TO FIT SIZE C
	C	3135 ENCLOSURE UPDATE	12/2/14	DSW	.XX ± .03	
					.XXX ± .01	
					FRACTIONAL ± 1/32	
				ANGULAR ± 1/2°		