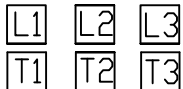
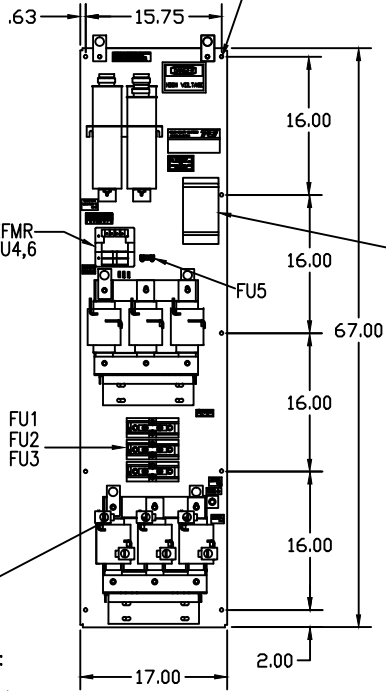
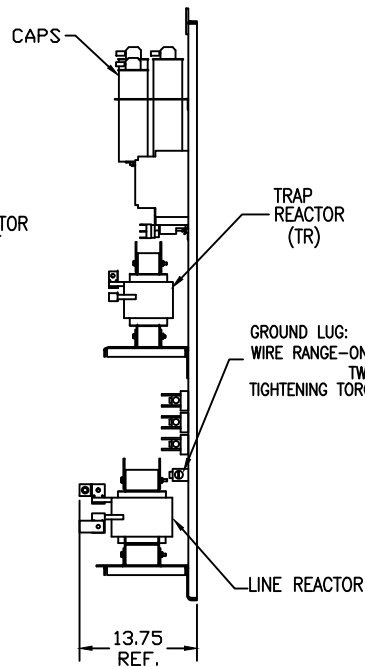


.50 DIA.  
10 MOUNTING  
HOLES.



CUSTOMER CONNECTION OUTPUT:  
 WIRE RANGE—ONE 600MCM-4  
 TWO 250MCM-1/0  
 TIGHTENING TORQUE 500 IN.-LB.



UNIT SPECIFICATIONS:					
KVAR HARMONIC	VOLT	HZ	PHASE	HP	
75	5TH	480	60	3	250
ENCLOSURE			WHITE OPEN PANEL		
APPROX.WT. LBS.			370		

SYMBOL	TCI PART NUMBER
LR	KDRS2T
TR	KTR75A65HG
CAP.1, CAP.2, CAP.3 (20 KVAR)	27609
CAP.4 (15 KVAR)	27608
XFMR.	23894
Fu1,2,3	13333
Fu4,6	13203
Fu5	13362
CNT	23368


ALTERNATE	TCI PART NUMBER
CAP.1, CAP.2, CAP.3 (20 KVAR)	KCAP20A6B
CAP.4 (5 KVAR)	KCAP15A6B

FOR SCHEMATIC SEE DWG# 26690

CUSTOMER IS RESPONSIBLE FOR PROPER  
 COOLING OF FILTER COMPONENTS.  
 CAPACITORS MAXIMUM AMBIENT 50°C  
 PC BOARD MAX. AMBIENT 40°C.

CUSTOMER IS RESPONSIBLE FOR INSTALLATION  
 TO MEET ALL NATIONAL AND LOCAL ELECTRICAL CODES.

HOLE TOL. +/- .005

TOLERANCES (EXCEPT AS NOTED)				 7878 N. 86th STREET MILWAUKEE, WI 53224	
				HG250AW00STC, HG7 W/CNT	
				250HP, 480/3/60, OPEN	
△ 2920 ASC CAP CHANGE	7/5/13	MJS		DRN BY DSW	DATE 7/23/08
NO	REVISION	DATE	BY	SCALE TO FIT	APPVA
					103538DG
					SHT. 1 OF 1