

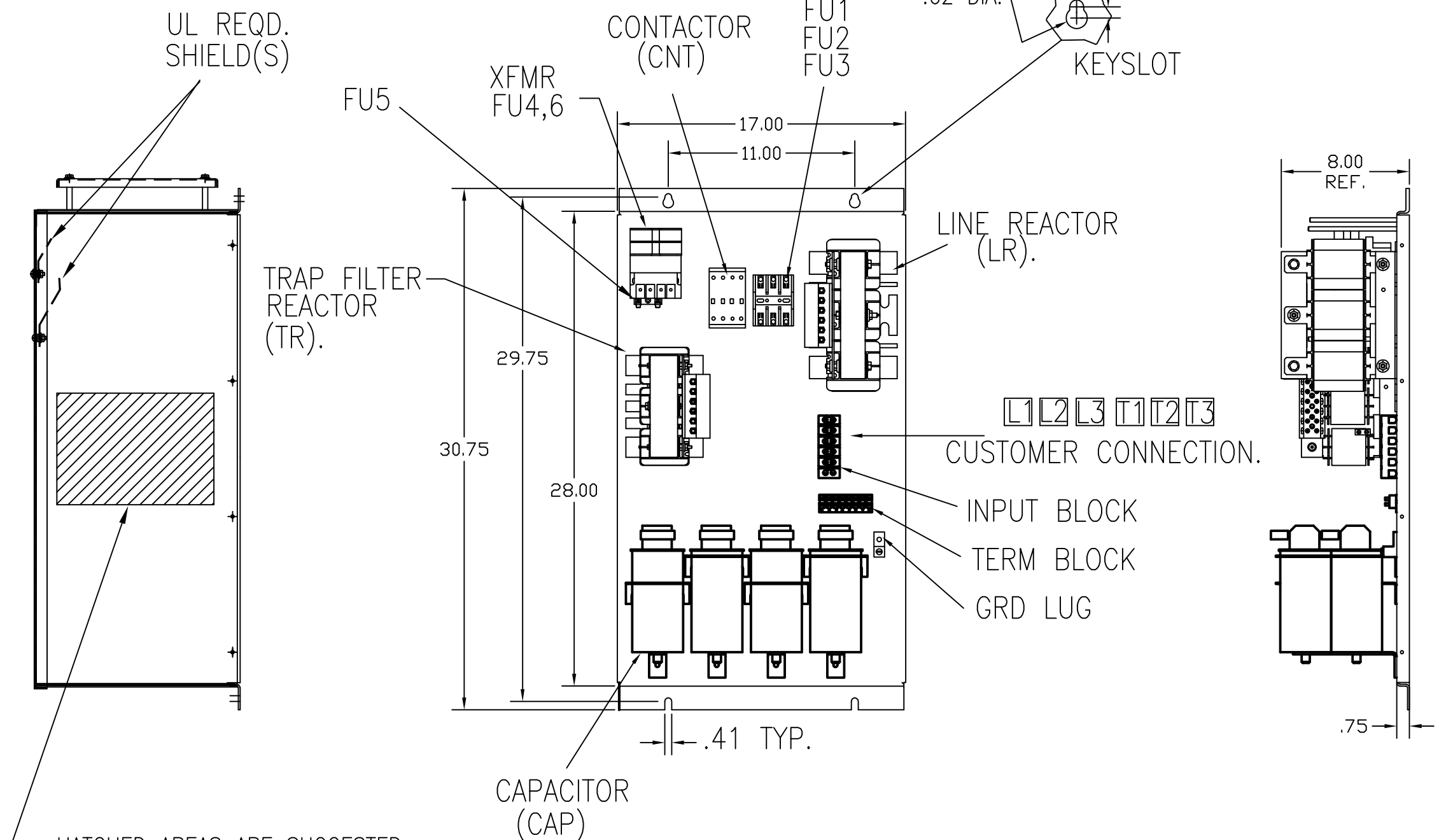
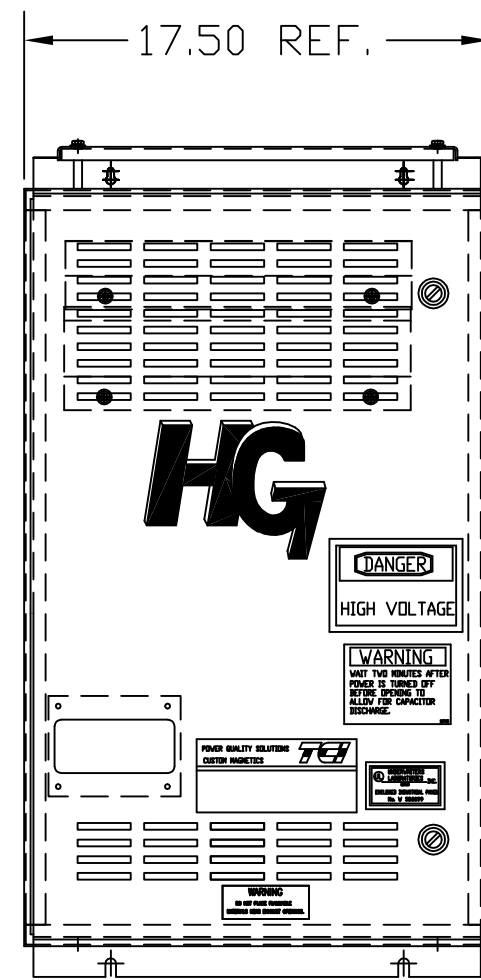
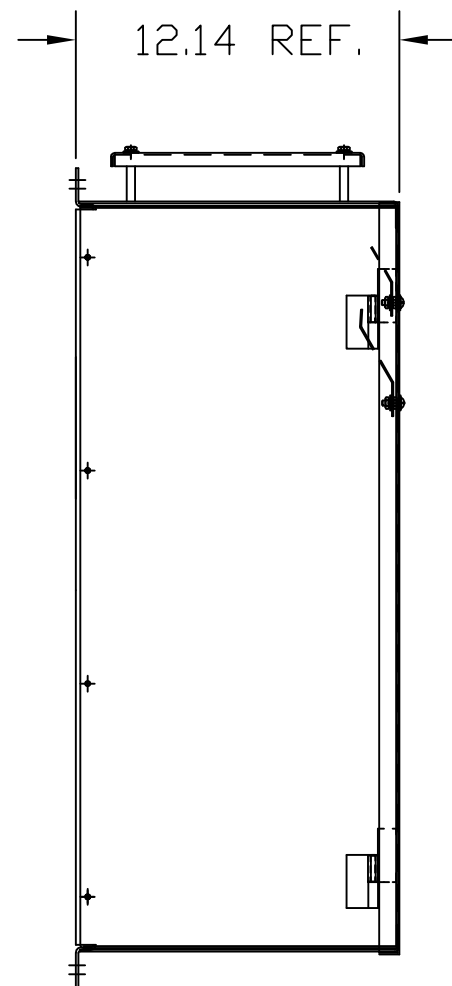
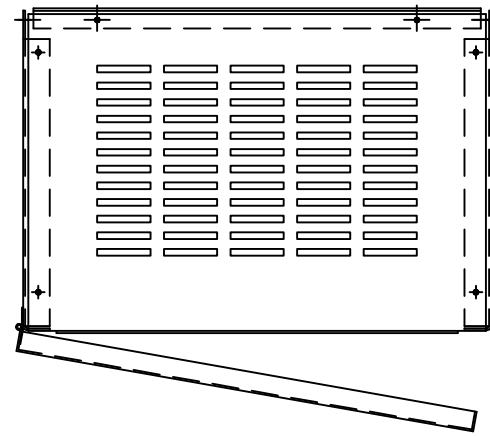
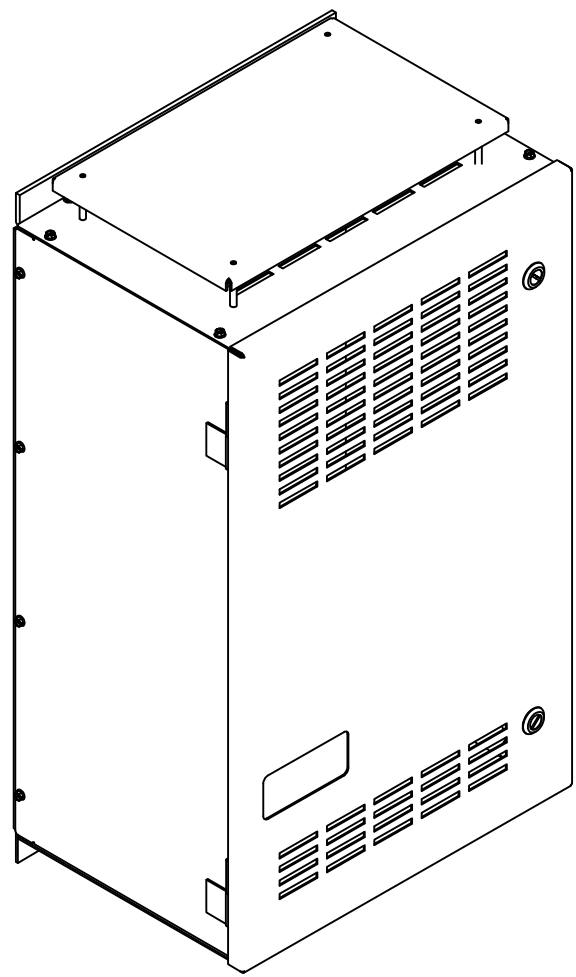
SEE 26822 FOR SCHEMATIC

PB-POWER INPUT BLOCK:
WIRE RANGE-#18 TO #4 AWG.
TIGHTENING TORQUE 20 IN-LB.

GROUND LUG:
WIRE RANGE TIGHTENING TORQUE.
1/0-3 AWG. 50 IN-LBS
4-6 AWG. 45 IN-LBS
8 AWG. 40 IN-LBS
10-14 AWG. 35 IN-LBS

UNIT SPECIFICATIONS:					
KVAR	HARMONIC	VOLT	HZ	PHASE	HP
6	5TH	240	60	3	20
ENCLOSURE		NEMA 1			
		WITH CONTACTOR			
APPROX.WT. LBS.		145			

SYMBOL	TCI PART NUMBER
LR	KDRF22T
TR	KTR6B65HG
CAP1-8 (3 KVAR)	KCAP3A6A
XFMR.	23891
Fu1, 2, 3	22665
Fu4,6	24073
Fu5	13364
CNT	23021



CUSTOMER IS RESPONSIBLE FOR INSTALLATION TO MEET ALL NATIONAL AND LOCAL ELECTRICAL CODES.

				TOLERANCES (EXCEPT AS NOTED) DECIMAL		W132 N10611 Grant Drive Germantown, WI 53022	
				.XX ± .03 .XXX ± .01			
				FRACTIONAL ± 1/32		HG20BW01STC, 20HP	
				ANGULAR ± 1/2°		240/3/60, ENCLOSED, WITH CNT	
A	2702	RVSD UL SHIELDS	1/30/12	RJC	DRN. BY DSW	DATE 10/15/08	DWG. NO. 103591DG
NO	REVISION		DATE	BY	SCALE TO FIT	APRVD.	SHT.1 OF1