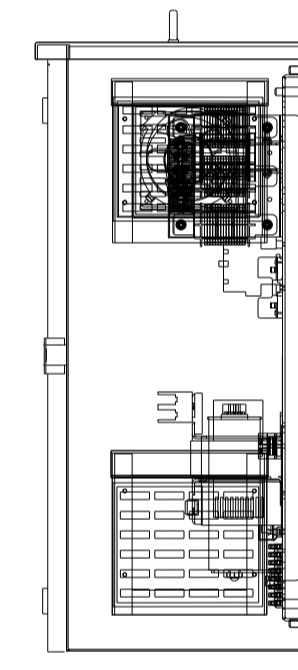
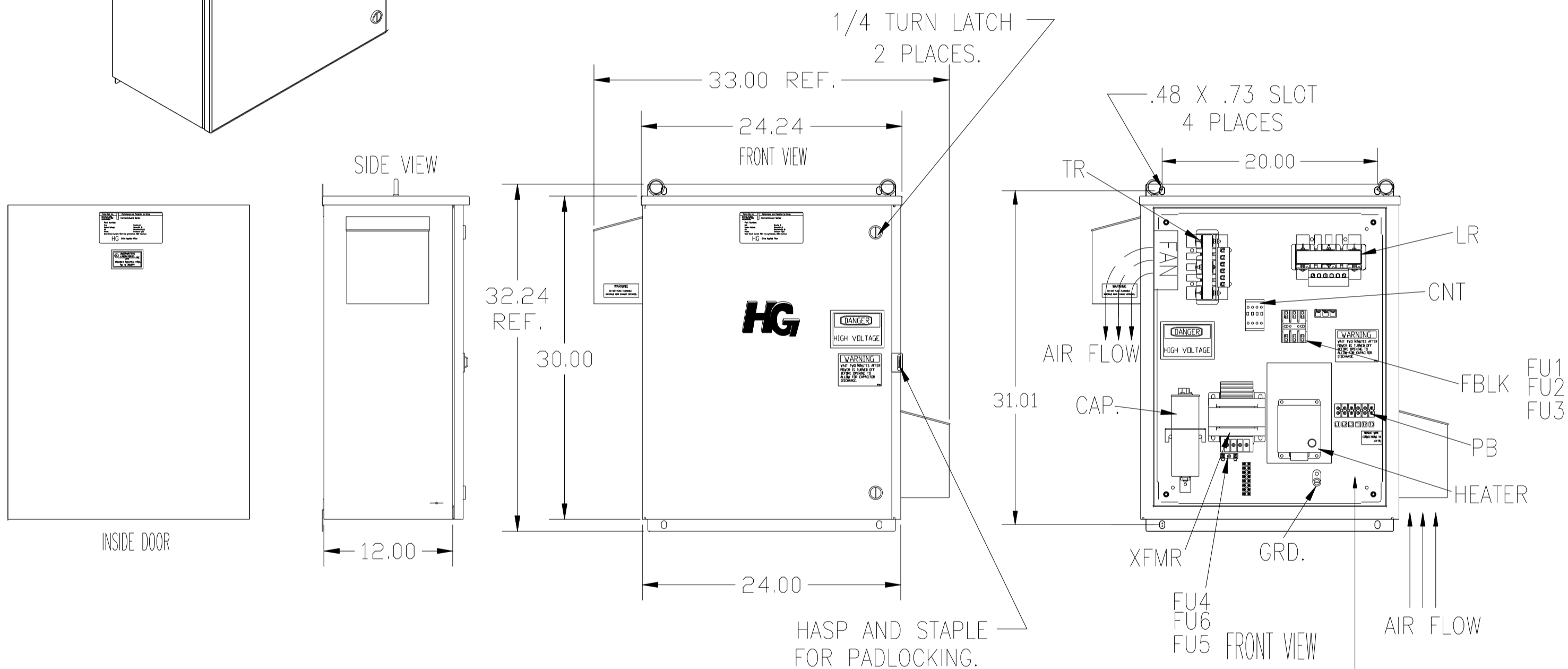
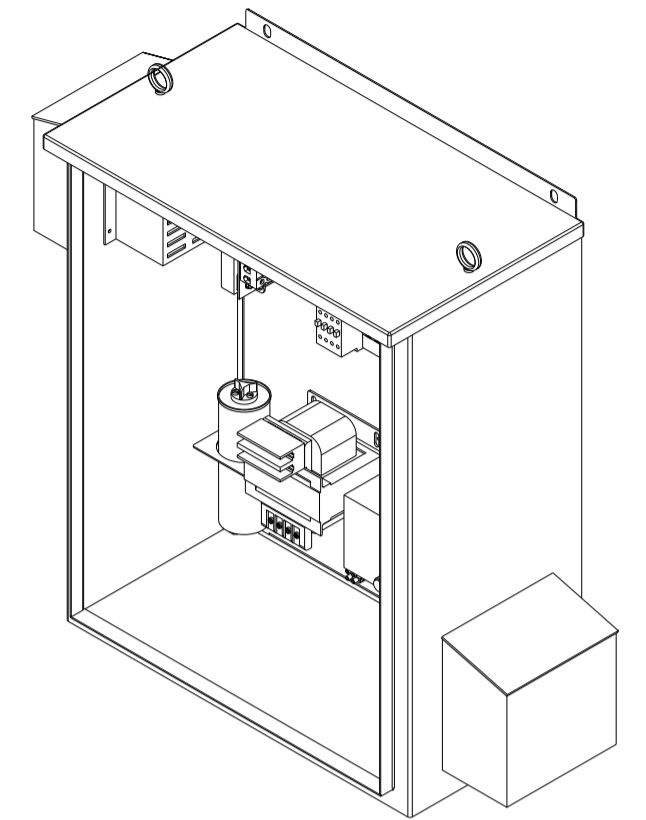
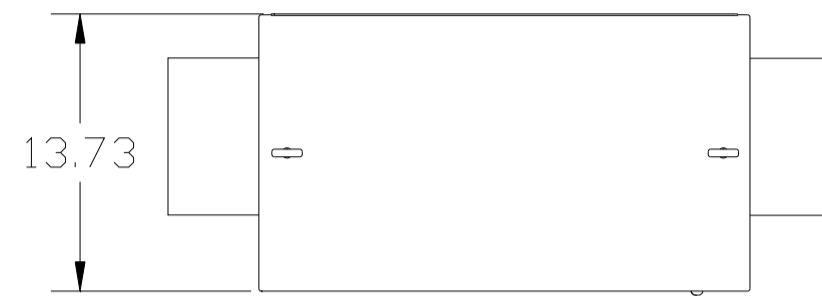
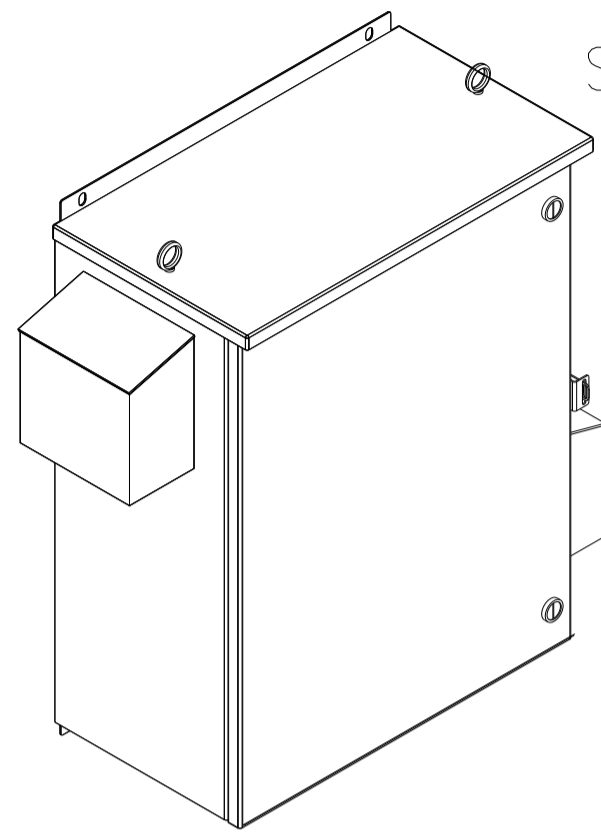


CUSTOMER IS RESPONSIBLE FOR INSTALLATION TO MEET ALL NATIONAL AND LOCAL ELECTRICAL CODES.

NOTE: USE ONLY HUBS OR FITTINGS THAT COMPLY WITH UL514B FOR TYPE 3R ENCLOSURES.

SEE DWG# 26750 FOR SCHEMATIC



UNIT SPECIFICATIONS:					
KVAR	HARMONIC	VOLT	HZ	PHASE	HP
6	5TH	480	60	3	20
ENCLOSURE		UL TYPE 3R			
COLOR		WHITE			
APPROX.WT. LBS.		130			

SYMBOL	TCI PART NUMBER
LR	KDRF2T
TR	KTR6A65HG
CAP1, CAP2, (3 KVAR)	KCAP3A6A
XFMR.	23896
Fu1, 2, 3	15752
Fu4,6	24009
Fu5	17567
CNT	26739
HEATER (200 WATT)	11638

PB—POWER INPUT BLOCK:
WIRE RANGE—#18 TO #4 AWG.
TIGHTENING TORQUE 20 IN-LB.

GROUND LUG:
WIRE RANGE—1/0 TO #14 AWG.
TIGHTENING TORQUE 200 IN-LB.

TOLERANCES (EXCEPT AS NOTED)		TCI		7878 N. 86th STREET MILWAUKEE, WI 53224	
DECIMAL	FRACTIONAL	DRN BY	DATE	DWG. NO.	
.XX ± .12	± 1/32	DSW	8/20/08	103723DG	
.XXX ± .03	ANGULAR ± 1/2°	SCALE TO FIT	APRVD.	C	SHT.1 OF 1
A 2641 ADD EYEBOLT		10/21/09		REVISION DATE BY	