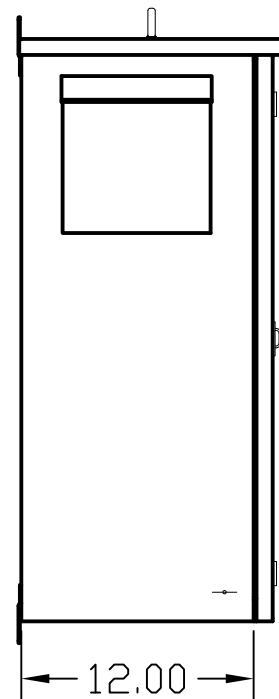
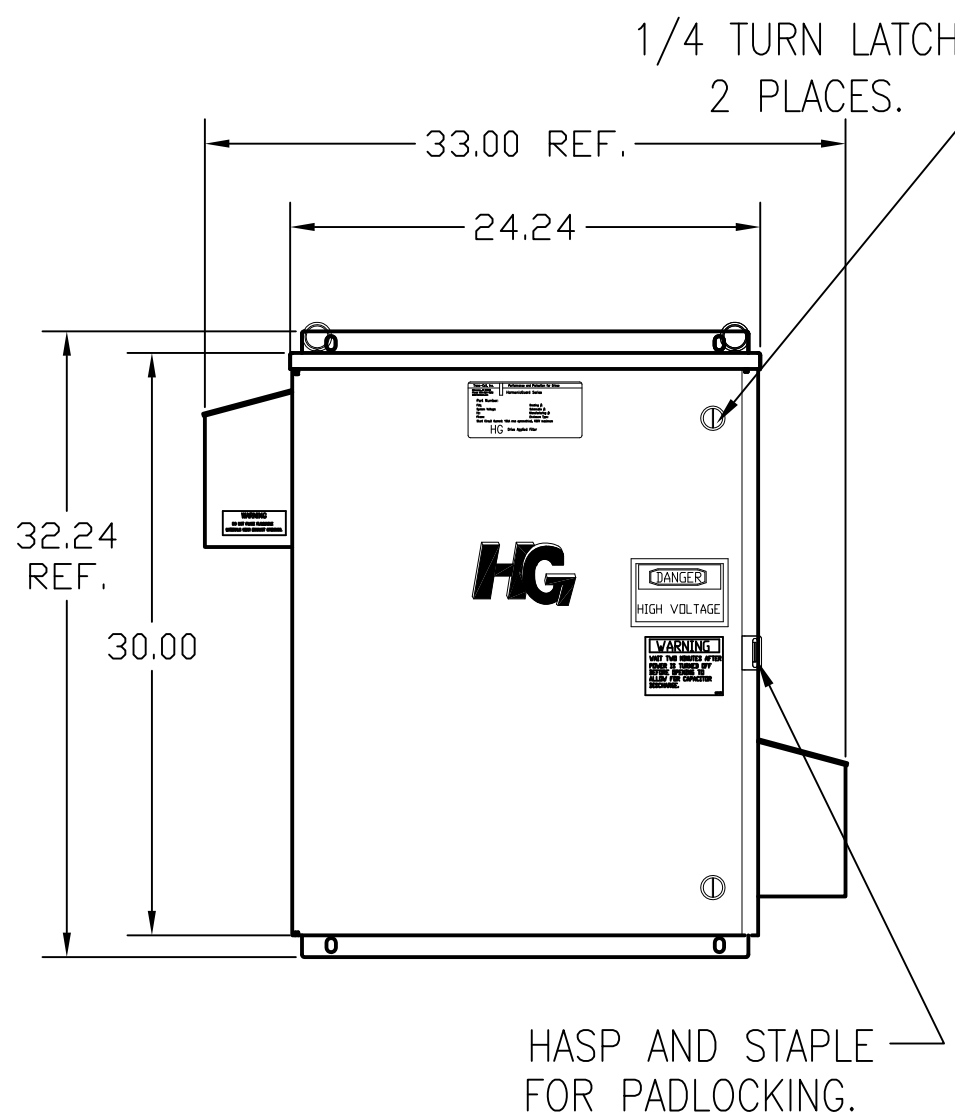


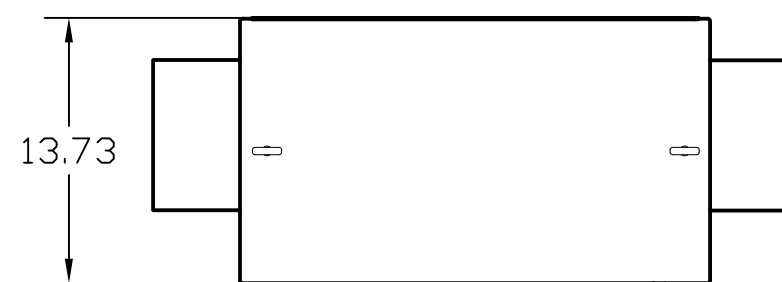
INSIDE DOOR



SIDE VIEW

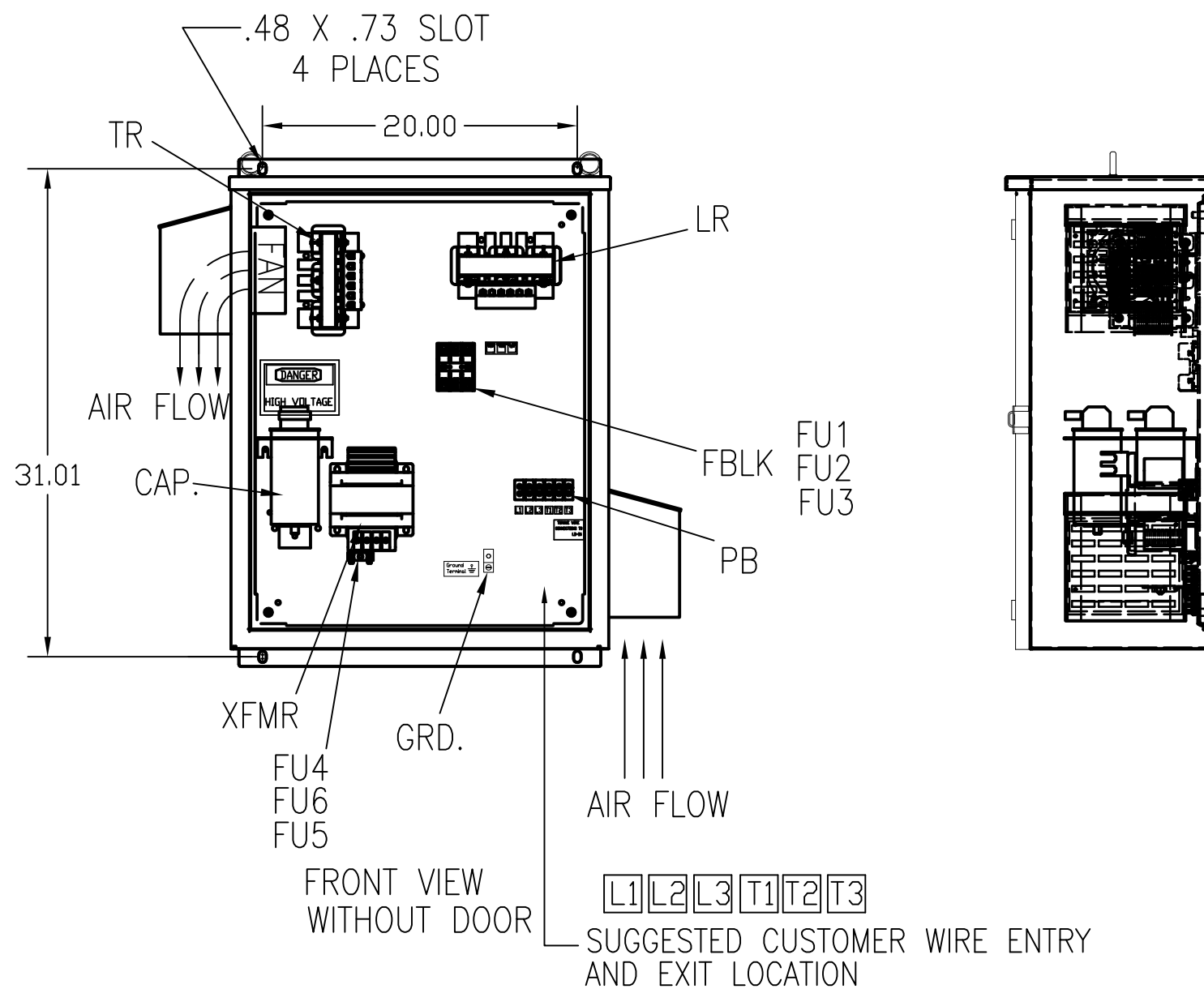


UNIT SPECIFICATIONS:					
KVAR HARMONIC	VOLT	HZ	PHASE	HP	
6	5TH	480	60	3	20
ENCLOSURE	UL TYPE 3R				
COLOR	WHITE				
APPROX.WT. LBS.	125				



SYMBOL	TCI PART NUMBER
LR	KDRF2T
TR	KTR6A65HG
CAP1, CAP2, (3 KVAR)	27605
XFMR.	23896
Fu1, 2, 3	15752
Fu4,6	24009
Fu5	17567

ALTERNATE	TCI PART NUMBER
CAP1, CAP2, (3 KVAR)	KCAP3A6A



PB-POWER INPUT BLOCK:  
WIRE RANGE-#18 TO #4 AWG.  
TIGHTENING TORQUE 20 IN-LB.

GROUND LUG:  
WIRE RANGE-1/0 TO #14 AWG.  
1/0 AWG thru 2 AWG 50 IN-LBS. MAX.  
4 AWG thru 6 AWG 45 IN-LBS. MAX.  
8 AWG 40 IN-LBS. MAX.  
10 AWG thru 14 AWG 35 IN-LBS. MAX.

SEE DWG# 26756 FOR SCHEMATIC

CUSTOMER IS RESPONSIBLE FOR INSTALLATION  
TO MEET ALL NATIONAL AND LOCAL ELECTRICAL CODES.

TCI, LLC CLAIMS PROPRIETARY RIGHTS IN THE MATERIAL HEREIN DISCLOSED. IT IS SUPPLIED WITHOUT PREJUDICE TO ANY PATENT RIGHTS OF TCI AND MAY NOT BE REPRODUCED OR USED TO MANUFACTURE ANYTHING SHOWN THEREIN WITHOUT WRITTEN PERMISSION FROM TCI.				TOLERANCES (EXCEPT AS NOTED)	W132 N10611 Grant Drive Germantown, WI 53022
				DECIMAL	
				.XX ±.12	
				.XXX±.03	
				FRACTIONAL	HG20AW03ST, 20HP 480/3/60 UL TYPE 3R
				± 1/32	DRN. BY RJC DATE 9/27/11 DWG. NO. 103613DG
	C 2900 CHG TO ASC CAPS	3/1/13	DSW	ANGULAR	SCALE TO FIT SIZE C
	NO REVISION	DATE	BY	± 1/2°	SHT.1 OF 1