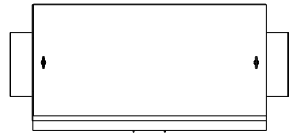
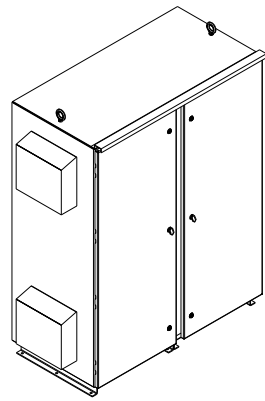


HG200LW03STC

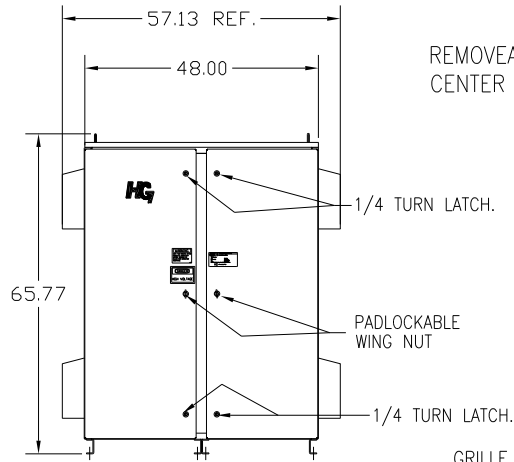
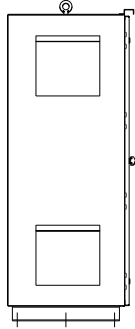
UNIT SPECIFICATIONS:

KW	HARMONIC	VOLT	HZ	PHASE	FLA
200	5TH	400	50	3	370
ENCLOSURE		TYPE 3R			
APPROX.WT. LBS.		975			

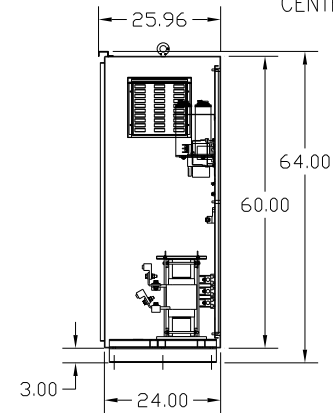
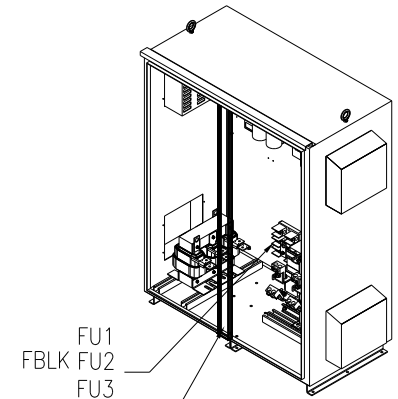
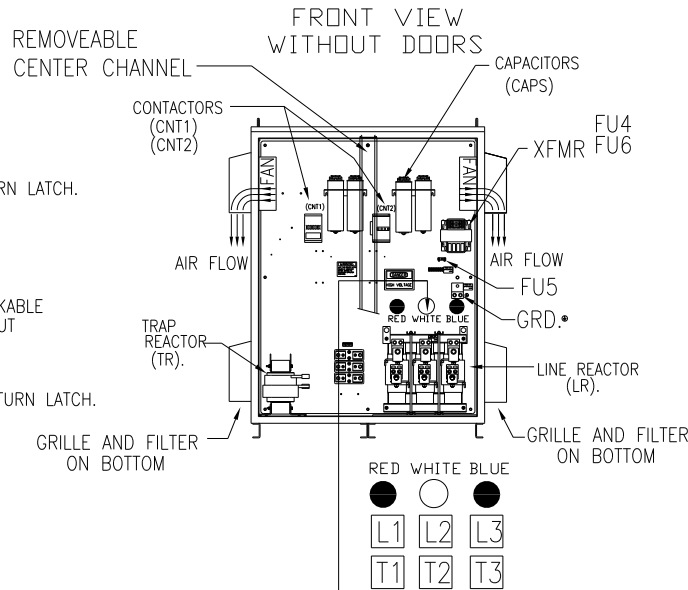
FOR SCHEMATIC SEE DWG# 27703-1



SIDE VIEW



FRONT VIEW WITH DOORS.



SIDE VIEW

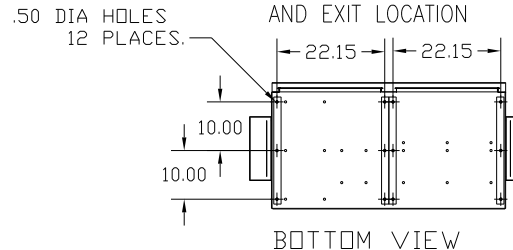
CUSTOMER IS RESPONSIBLE FOR INSTALLATION TO MEET ALL NATIONAL AND LOCAL ELECTRICAL CODES.

NOTE: USE ONLY HUBS OR FITTINGS THAT COMPLY WITH UL514B FOR TYPE 3R ENCLOSURES.

CUSTOMER CONNECTIONS:
WIRE RANGE-TWO 600MCM-2
TIGHTENING TORQUE 500 IN.-LB.

GROUND LUG:
WIRE RANGE-TWO 600MCM-2
TIGHTENING TORQUE 500 IN.-LB.

SUGGESTED CUSTOMER WIRE ENTRY AND EXIT LOCATION



SYMBOL	TCI PART NUMBER
LR	KDRX32T
TR	KTR81L55HG
CAP1,-7 (20 KVAR)	KCAP20A6B
XFMR.	24389
Fu1, 2, 3	11175
Fu4,6	23820
Fu5	17569
CNT1	19246
CNT2	19245

				TOLERANCES (EXCEPT AS NOTED)
				DECIMAL
				.XX ± .03
				.XXX ± .01
				FRACTIONAL
				± 1/32
A	AS BUILT	4/05/2011	DSW	ANGULAR
NO	REVISION	DATE	BY	± 1/2°

TCI 7878 N. 86th STREET
MILWAUKEE, WI 53224

TCI, HG7 Standard, 200kW
400/3/50, Type 3R, CNT.

DRN. BY	DSW	DATE	4/5/2011	DWG. NO.	B 104685DG
SCALE	TO FIT	APRVD.			SHT.1 OF 1