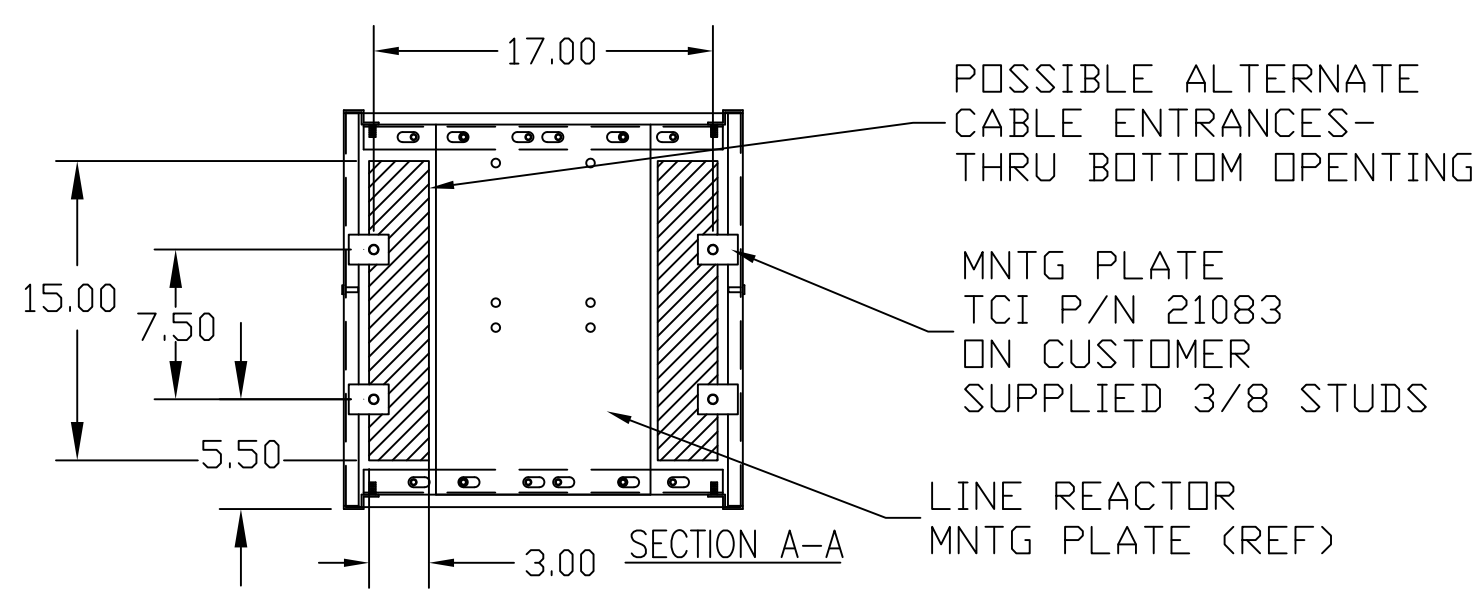
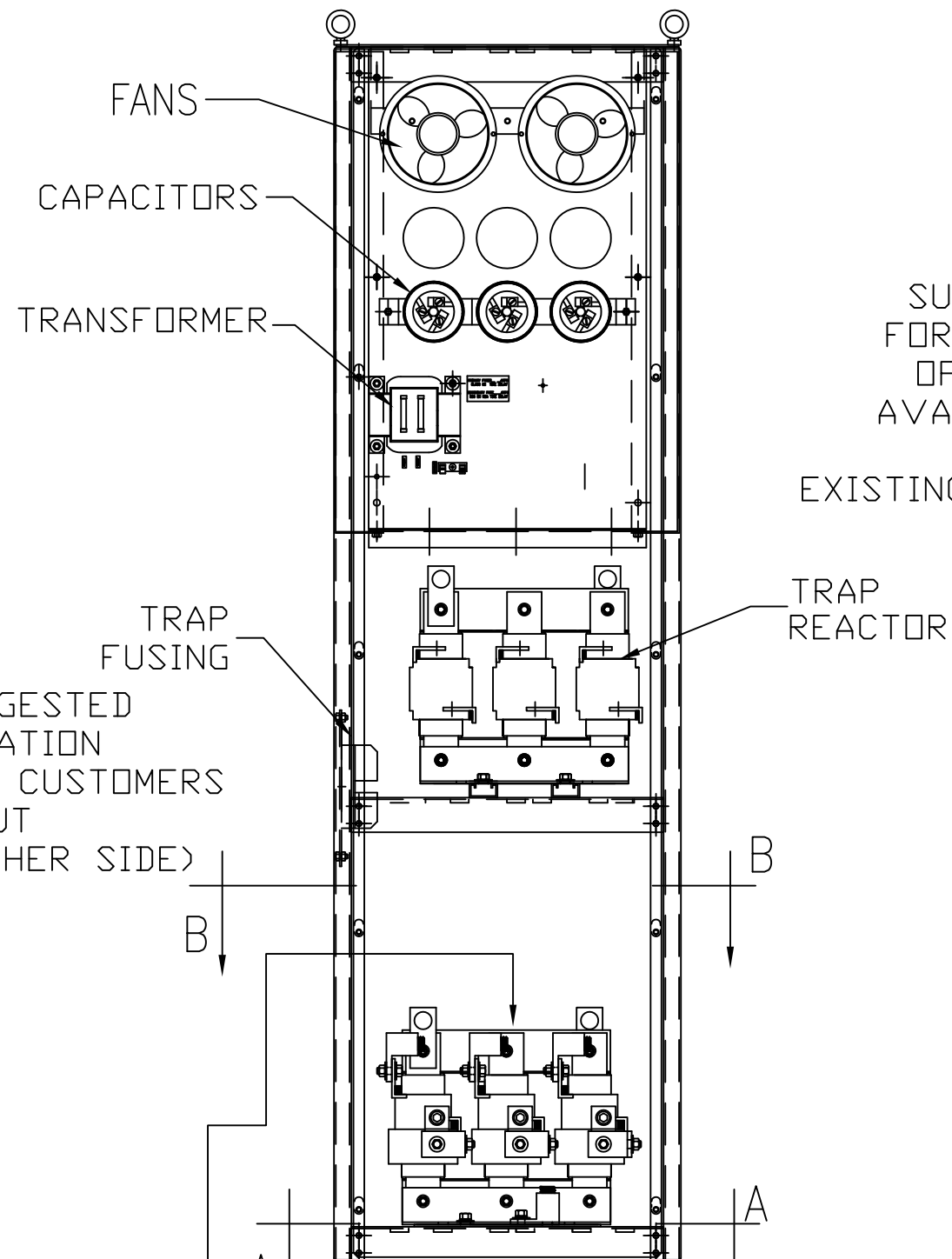
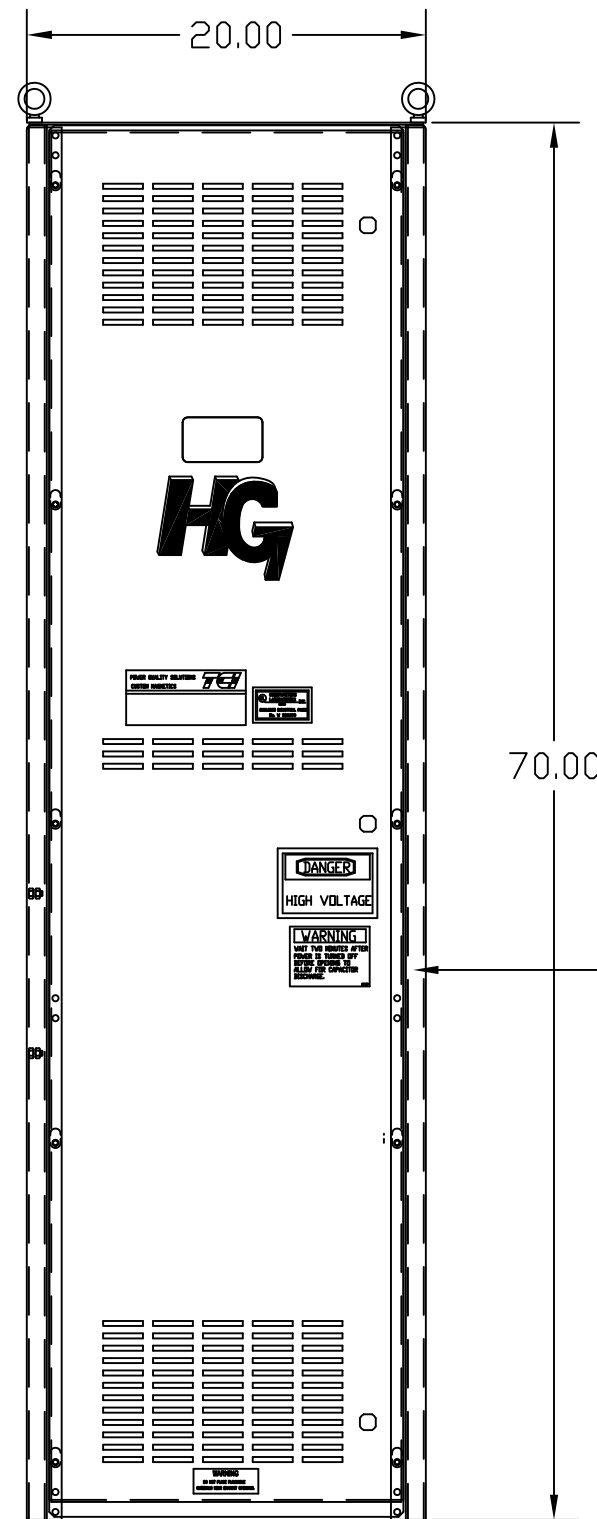
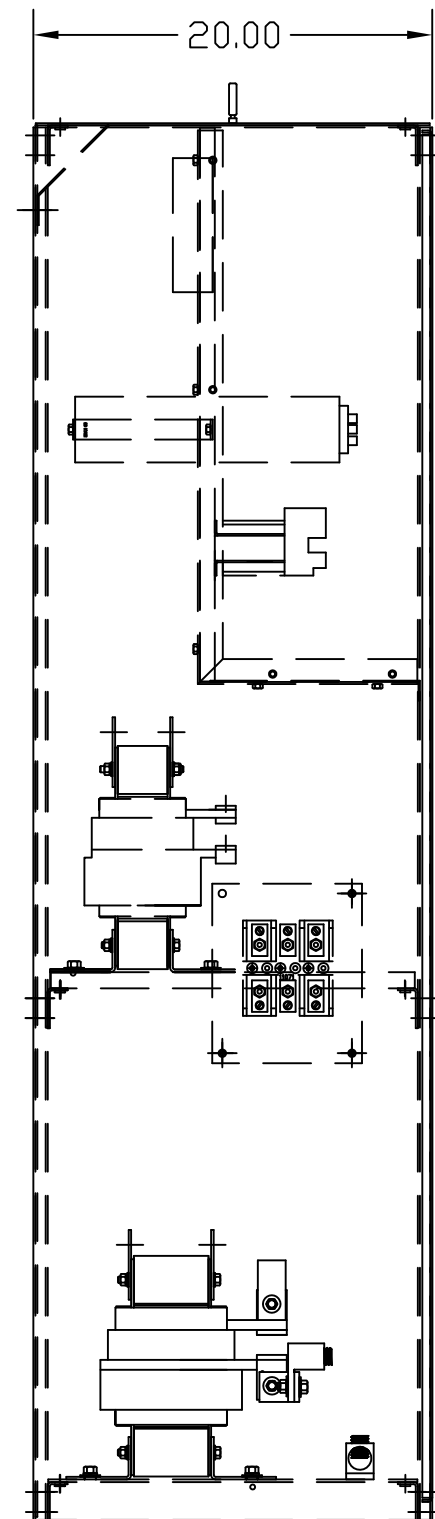


POSSIBLE ALTERNATE CABLE ENTRANCES- REQUIRES MODIFICATION OF AIR FLOW DEFLECTOR

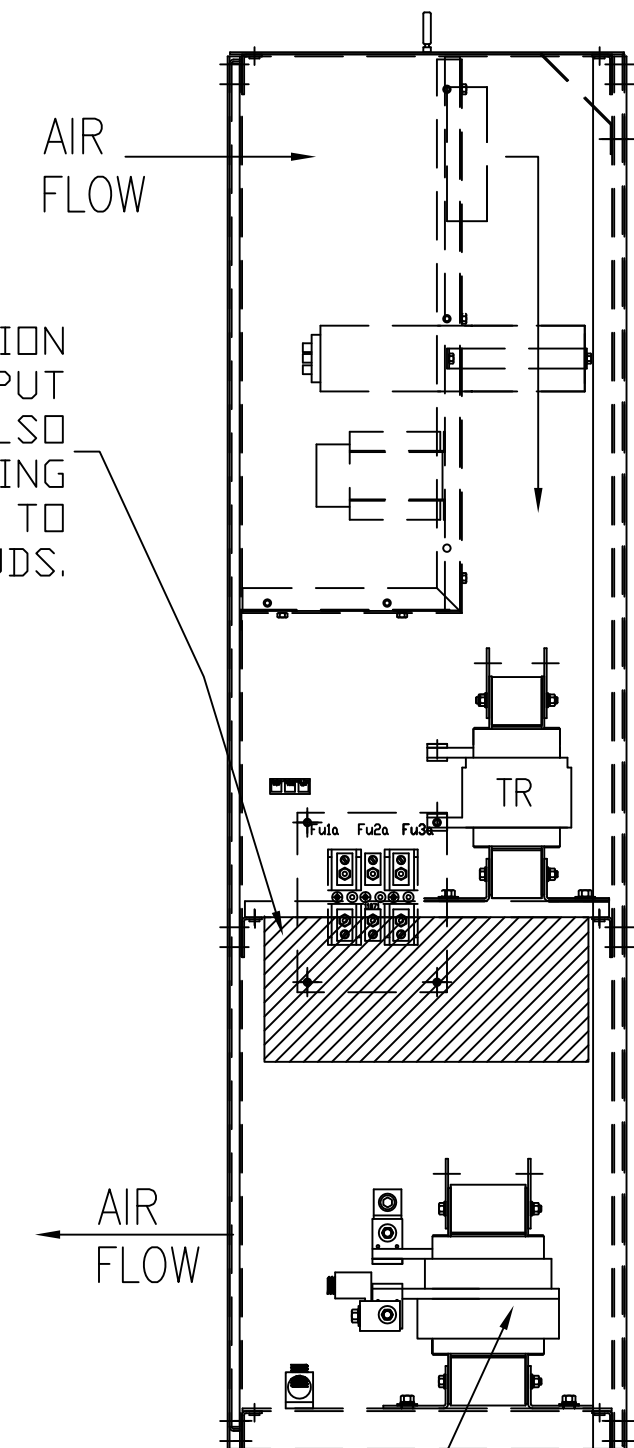


CUSTOMER CONNECTIONS:
WIRE RANGE-ONE 600MCM-4
TWO 250MCM-1/0
TIGHTENING TORQUE 500 IN-LB.

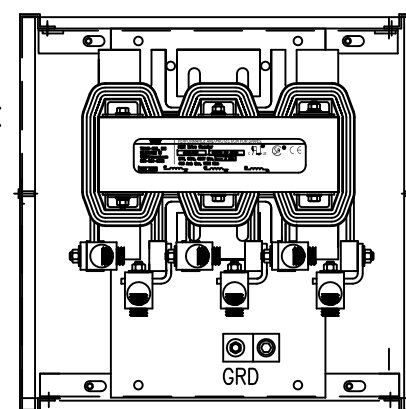
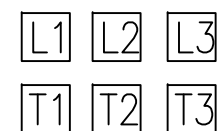
GROUND LUG:
WIRE RANGE-ONE 600MCM-4
TWO 250MCM-1/0
TIGHTENING TORQUE 500 IN-LB.



SUGGESTED LOCATION FOR CUSTOMERS INPUT OPPOSITE SIDE ALSO AVAILABLE BY MOVING FUSES AND TR TO EXISTING MOUNTING STUDS.



CUSTOMER CONNECTIONS:



SECTION B-B

FOR SCHEMATIC SEE 25116

CUSTOMER IS RESPONSIBLE FOR INSTALLATION TO MEET ALL NATIONAL AND LOCAL ELECTRICAL CODES

UNIT SPECIFICATIONS:					
KVAR	HARMONIC	VOLT	HZ	PHASE	HP
60	5TH	600	60	3	200
ENCLOSURE		NEMA 1			
APPROX.WT. LBS.		500			

SYMBOL	TCI PART NUMBER
LR	KDRS41T
TR	KTR60C65HG
CAP1 ,2 ,3. (20 KVAR)	KCAP20C6B
XFMR.	25094
Fu1a;2a;3a	11077
Fu4,6	24073
Fu5	13362

TCI, LLC CLAIMS PROPRIETARY RIGHTS IN THE MATERIAL HEREIN DISCLOSED. IT IS SUPPLIED WITHOUT PREJUDICE TO ANY PATENT RIGHTS OF TCI AND MAY NOT BE REPRODUCED OR USED TO MANUFACTURE ANYTHING SHOWN THEREIN WITHOUT WRITTEN PERMISSION FROM TCI.

NO	REVISION	DATE	BY	TOLERANCES (EXCEPT AS NOTED)
B	2786 REMOVE COLOR	11/14/11	DSW	DECIMAL .XX ±.03 .XXX ±.01
A	2516, CAP WAS 18612	9/30/07	RJC	FRACTIONAL ± 1/32
NO	REVISION	DATE	BY	ANGULAR ± 1/2°

TCI® W132 N10611 Grant Drive
Germanstown, WI 53022

HG200CW01ST, HG7 STANDARD
200 HP, 600/3/60, TYPE 1

DRN. BY DSW DATE 3/17/05 DWG. NO. 102495DG
SCALE TO FIT SIZE C SHT.1 OF 1