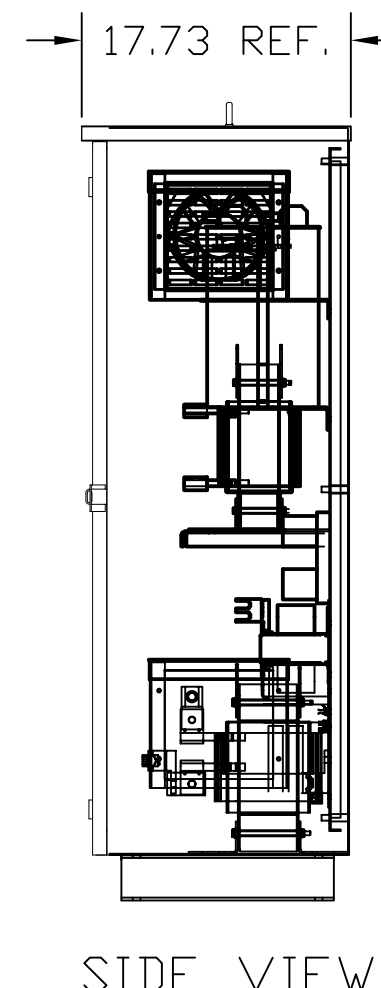
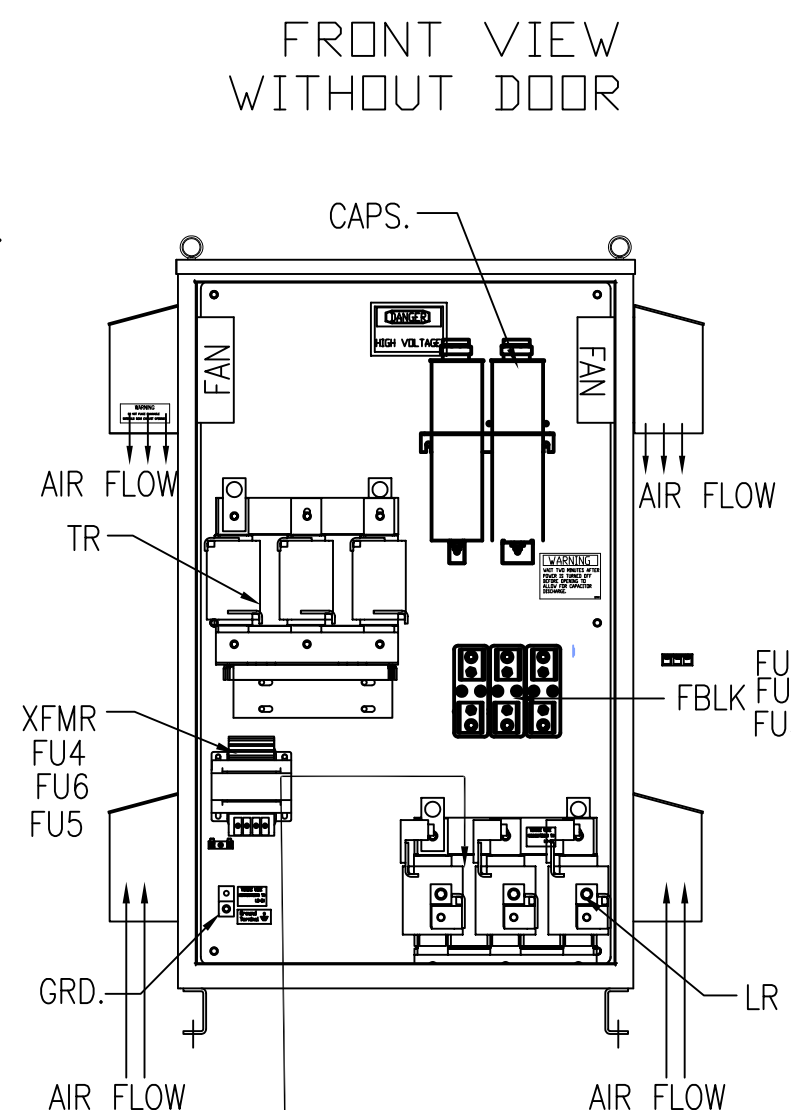
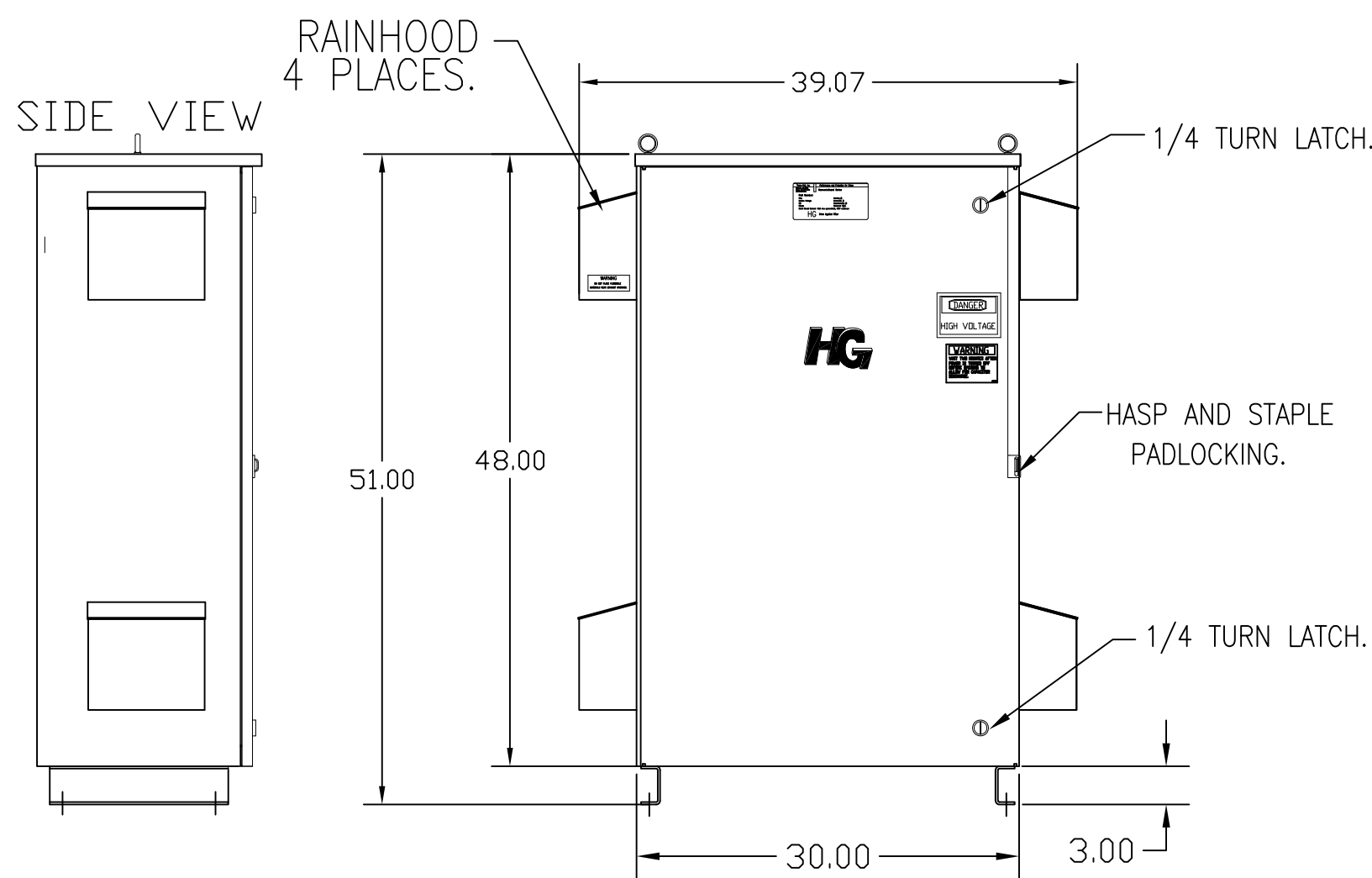
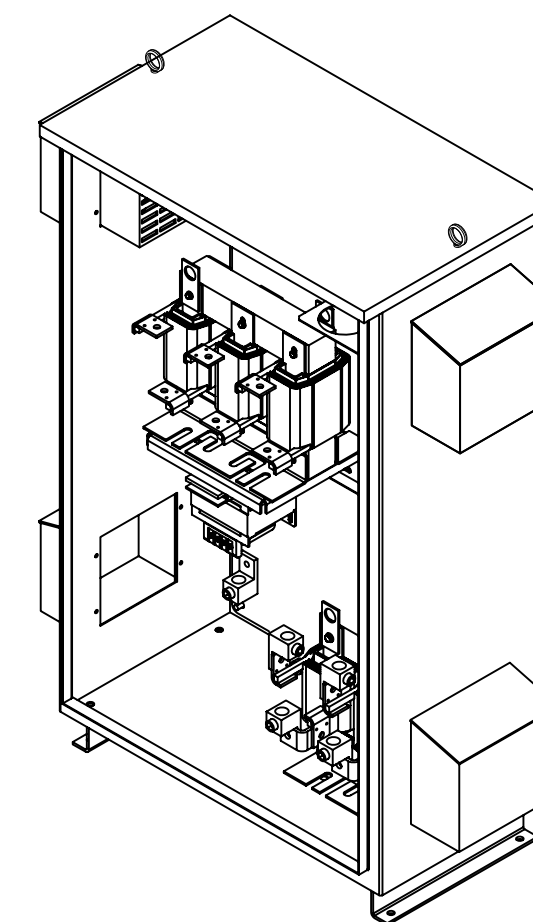
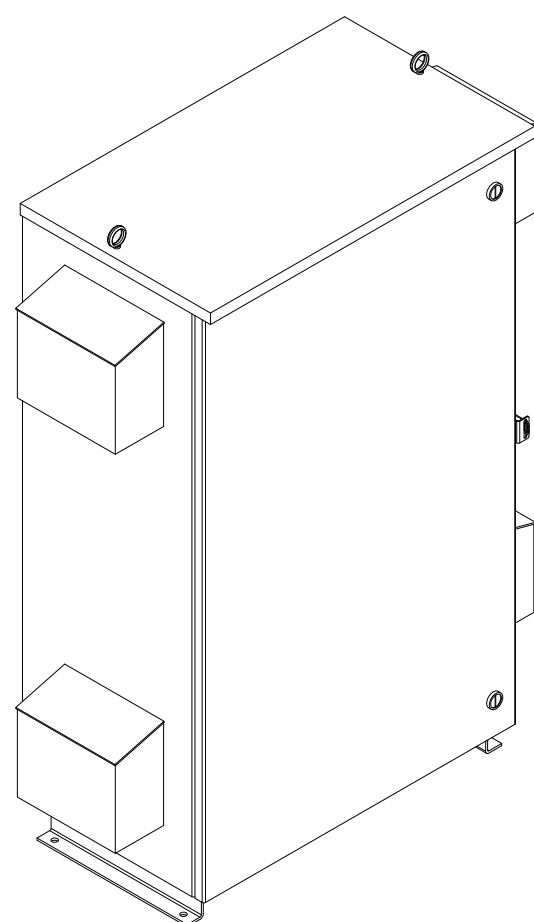


SEE DWG# 26757 FOR SCHEMATIC

CUSTOMER IS RESPONSIBLE FOR INSTALLATION TO MEET ALL NATIONAL AND LOCAL ELECTRICAL CODES.

NOTE: USE ONLY HUBS OR FITTINGS THAT COMPLY WITH UL514B FOR TYPE 3R ENCLOSURES.



INSIDE DOOR

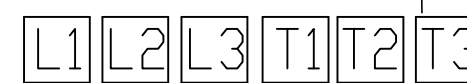
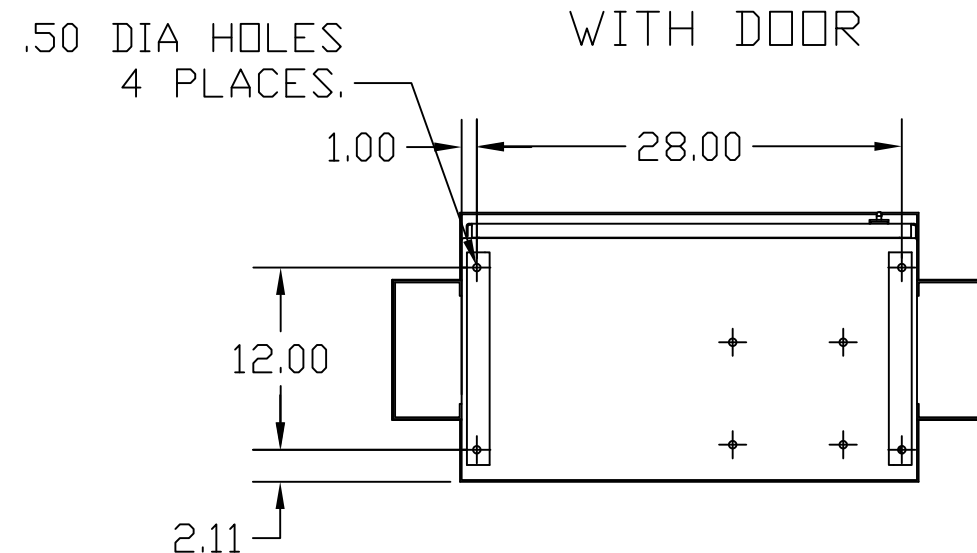
SIDE VIEW

FRONT VIEW WITH DOOR

FRONT VIEW WITHOUT DOOR

SIDE VIEW

SYMBOL	TCI PART NUMBER
LR	KDRS1T
TR	KTR60A65HGX1
CAP.1,2,3 (20KVAR)	27609
XFMR.	23899
Fu1;2;3	11305
Fu4,6	14106
Fu5	23977
ALTERNATE	TCI PART NUMBER
CAP.1,2,3 (20KVAR)	KCAP20A6B



SUGGESTED CUSTOMER WIRE ENTRY AND EXIT LOCATION

GROUND LUG:  
WIRE RANGE- ONE 600MCM-4  
TWO 250MCM-1/0  
TIGHTENING TORQUE 500 IN-LB.

CUSTOMER CONNECTIONS  
WIRE RANGE- ONE 600MCM-4  
TWO 250MCM-1/0  
TIGHTENING TORQUE 500 IN-LB.

UNIT SPECIFICATIONS:					
KVAR	HARMONIC	VOLT	HZ	PHASE	HP
60	5TH	480	60	3	200
ENCLOSURE		TYPE 3R- COLOR, WHITE			
APPROX.WT. LBS		470			

TCI, LLC CLAIMS PROPRIETARY RIGHTS IN THE MATERIAL HEREIN DISCLOSED. IT IS SUPPLIED WITHOUT PREJUDICE TO ANY PATENT RIGHTS OF TCI AND MAY NOT BE REPRODUCED OR USED TO MANUFACTURE ANYTHING SHOWN THEREIN WITHOUT WRITTEN PERMISSION FROM TCI.

NO	REVISION	DATE	BY
B	2900 CHG TO ASC CAPS	3/6/13	DSW
A	2641 ADD EYEBOLTS	10/13/09	DSW

TOLERANCES (EXCEPT AS NOTED)	
DECIMAL	FRACTIONAL
.XX ±.12	± 1/32
.XXX ±.06	ANGULAR ± 1/2°

**TCI**® W132 N10611 Grant Drive  
 Germantown, WI 53022  
 HG200AW03ST, 200HP  
 480/3/60 UL TYPE 3R  
 DRN BY DSW DATE 9/12/08 DWG. NO. 103623DG  
 SCALE TO FIT SIZE C SHT.1 OF 1