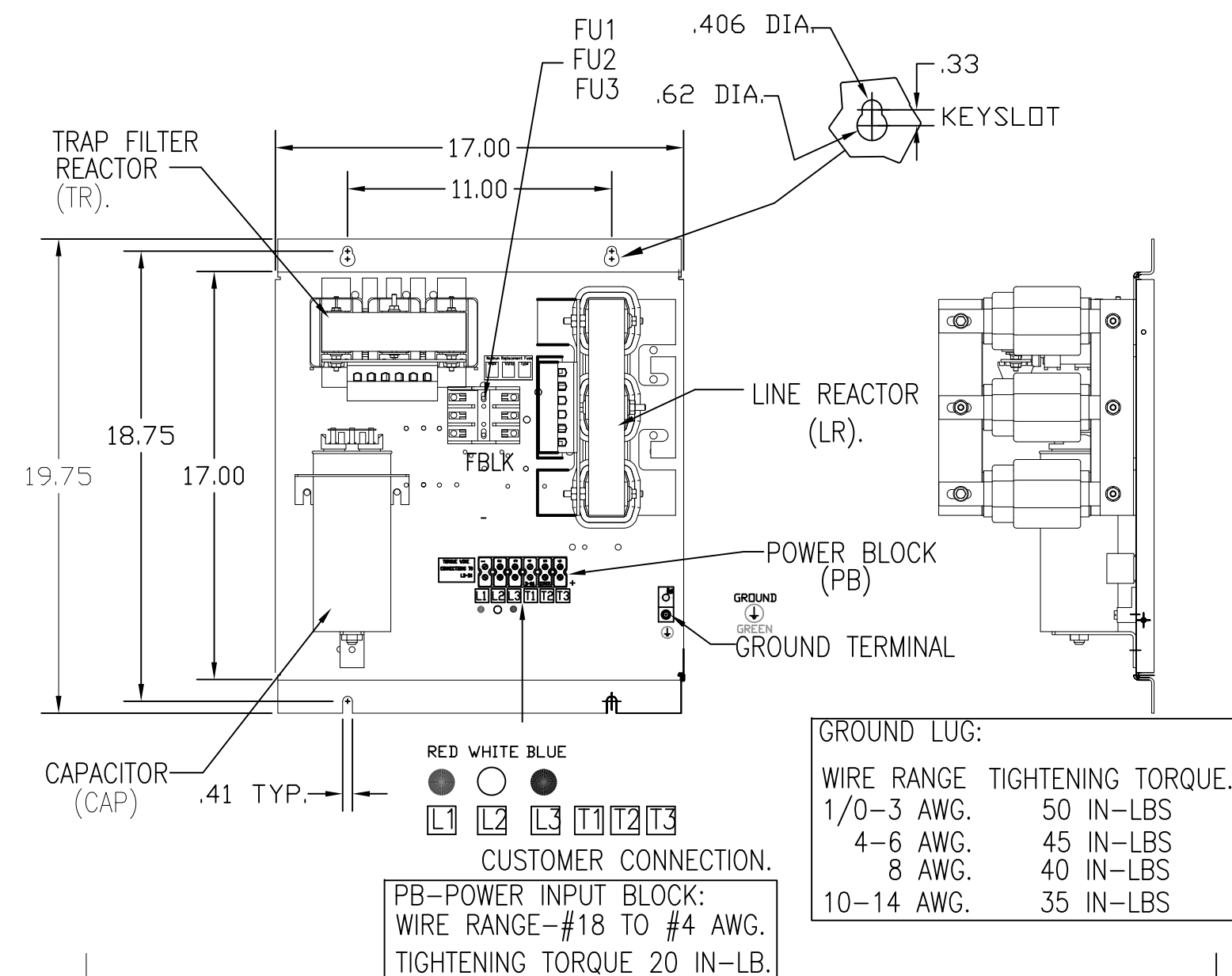
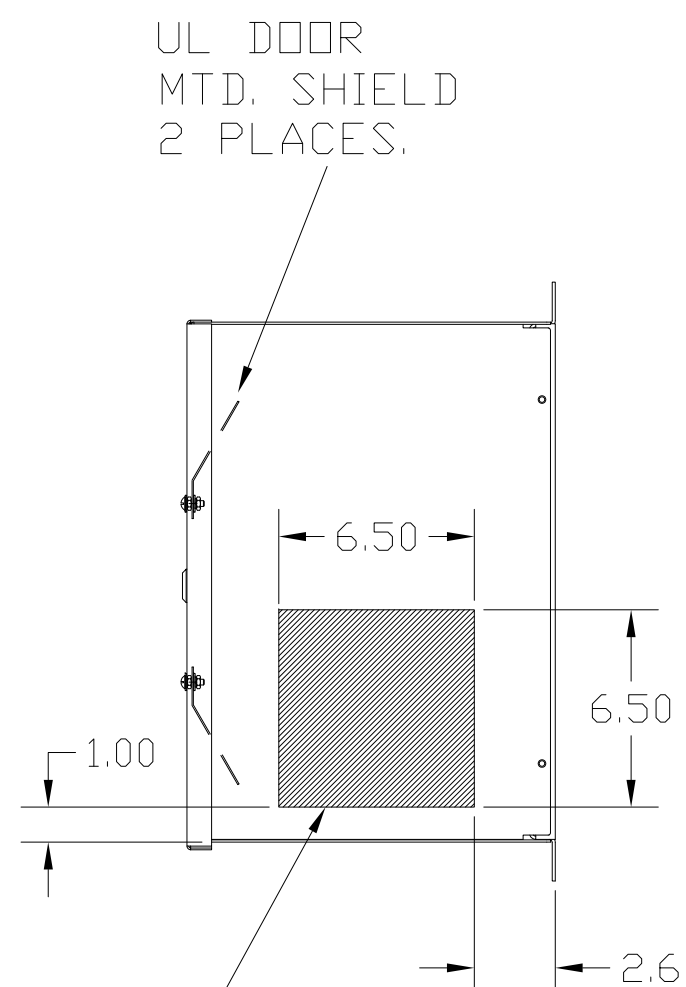
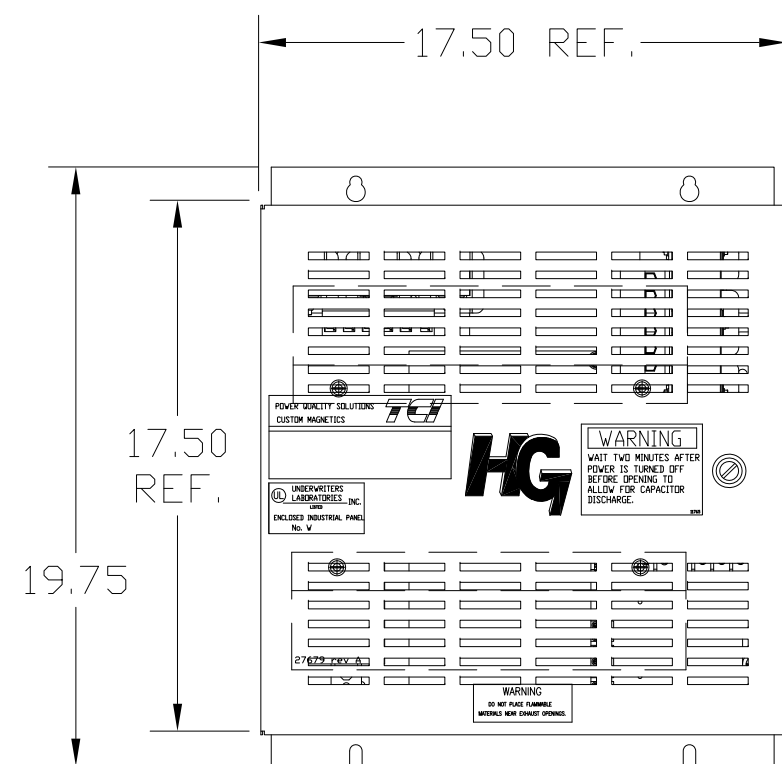
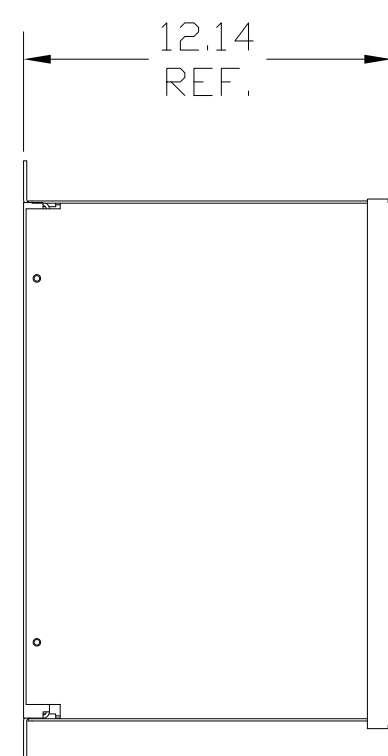
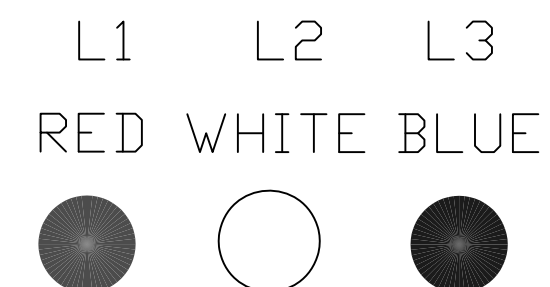


UNIT SPECIFICATIONS:					
KW	HARMONIC	VOLT	HZ	PHASE	FLA
18.5	5TH	400	50	3	38
ENCLOSURE		NEMA 1			
APPROX.WT. LBS.		100			

SYMBOL	TCI PART NUMBER
LR	KDRH33T
TR	KTR9L55HG
CAP, 1.. (15 KVAR)	KCAP15A6B
Fu1, 2, 3	22665

SEE DWG# 27709 FOR SCHEMATIC



GROUND LUG:

WIRE RANGE	TIGHTENING TORQUE
1/0-3 AWG.	50 IN-LBS
4-6 AWG.	45 IN-LBS
8 AWG.	40 IN-LBS
10-14 AWG.	35 IN-LBS

HATCHED AREAS ARE SUGGESTED CUSTOMER WIRE AND EXIT LOCATIONS (BOTTOM ENTRANCE ALTERNATE-CONSULT TCI)

ENCLOSURE NOT SHOWN

CUSTOMER IS RESPONSIBLE FOR INSTALLATION TO MEET ALL NATIONAL AND LOCAL ELECTRICAL CODES.

TCI, LLC CLAIMS PROPRIETARY RIGHTS IN THE MATERIAL HEREIN DISCLOSED. IT IS SUPPLIED WITHOUT PREJUDICE TO ANY PATENT RIGHTS OF TCI AND MAY NOT BE REPRODUCED OR USED TO MANUFACTURE ANYTHING SHOWN THEREIN WITHOUT WRITTEN PERMISSION FROM TCI.				TOLERANCES (EXCEPT AS NOTED):	W132 N10611 Grant Drive Germantown, WI 53022
				DECIMAL	
				.XX ± .03 .XXX ± .01	
				FRACTIONAL ± 1/32	
	AS BUILT	5/12/11	DSW	ANGULAR ± 1/2°	DRN. BY DSW DATE 5/13/11 DWG. NO. 104657DG
	REVISION	DATE	BY	SCALE TO FIT	SIZE C SHT. 1 OF 1