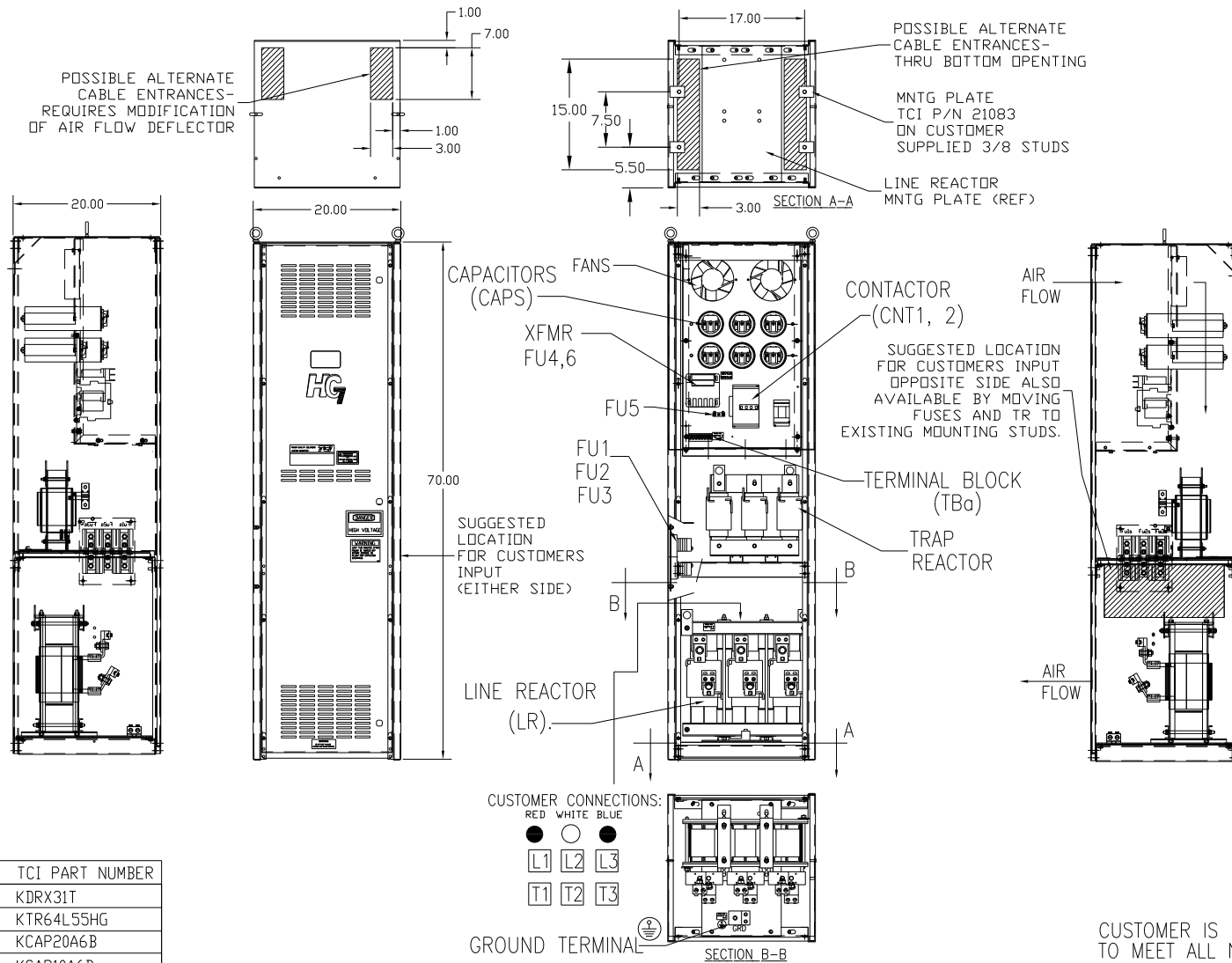


UNIT SPECIFICATIONS:					
KW	HARMONIC	VOLT	HZ	PHASE	FLA
160	5TH	400	50	3	320
ENCLOSURE		NEMA 1			
APPROX.WT. LBS.		575			



RED WHITE BLUE
 ● ○ ●
 L1 L2 L3
 T1 T2 T3

CUSTOMER CONNECTIONS:
 WIRE RANGE-TWO 350MCM-4
 TIGHTENING TORQUE 275 IN.-LB.

GROUND LUG:
 WIRE RANGE-TWO 350MCM-4
 TIGHTENING TORQUE 275 IN.-LB.

SYMBOL	TCI PART NUMBER
LR	KDRX31T
TR	KTR64L55HG
CAP1,2,3,4,5 (20 KVAR)	KCAP20A6B
CAP6 (10 KVAR)	KCAP10A6B
XFMR.	24393
Fu1, 2, 3	11170
Fu4,6	24073
Fu5	24012
CNT1	19245
CNT2	23048

SEE DRAWING# 27703-1 FOR SCHEMATIC

CUSTOMER IS RESPONSIBLE FOR INSTALLATION TO MEET ALL NATIONAL AND LOCAL ELECTRICAL CODES.

				TOLERANCES (EXCEPT AS NOTED)		TCI 7878 N. 86th STREET MILWAUKEE, WI 53224	
				DECIMAL		HG160LW01STC, 160KW 400/3/50, ENCLOSED, W/CNT	
				XX ± .03			
				XXX ± .01			
				FRACTIONAL		DRN. BY DSW DATE 11/12/2010 DWG. NO. 104539DG	
				± 1/32			
A	AS BUILT	11/04/10	DSW	ANGULAR	± 1/2°	SCALE TO FIT	APRVD C
NO	REVISION	DATE	BY			SHT. 1 OF 1	