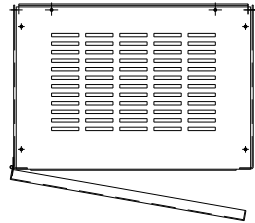
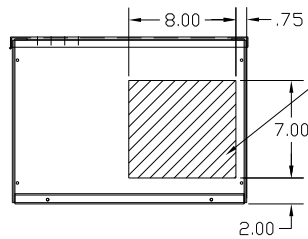
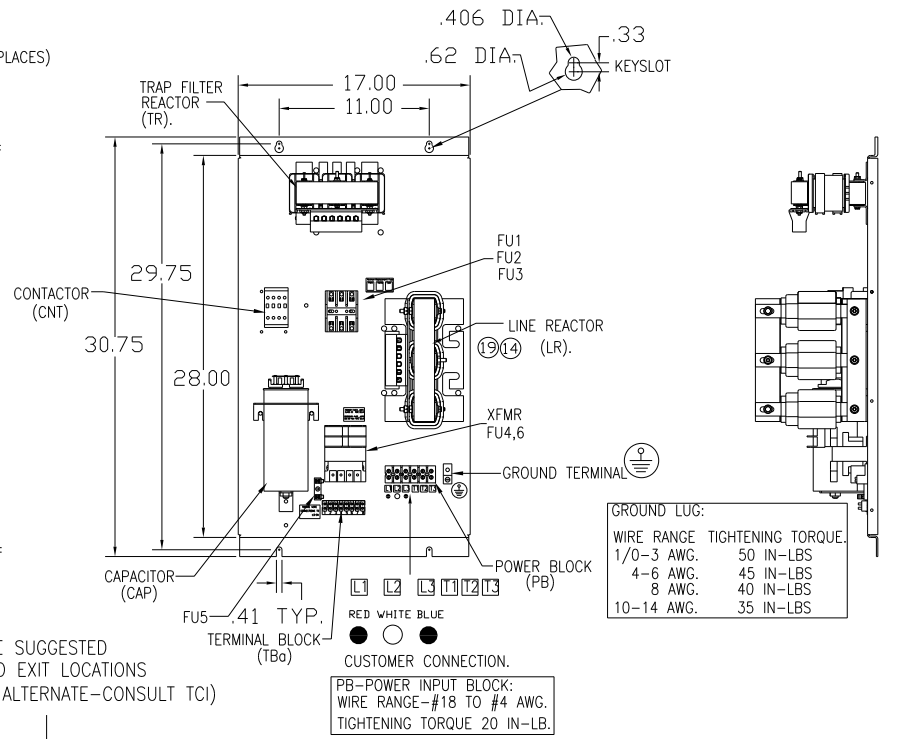
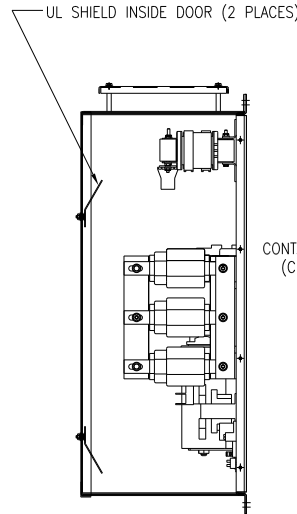
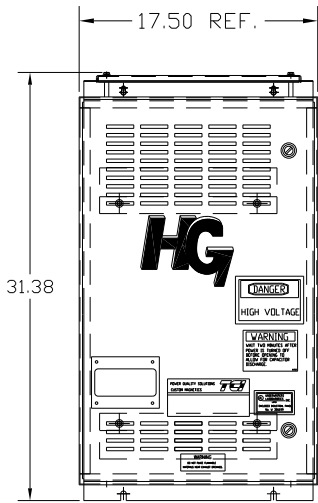
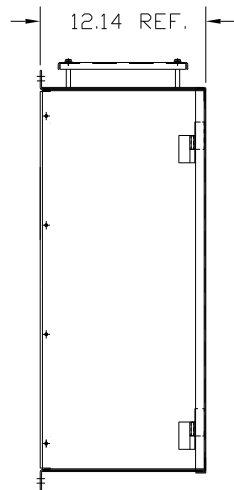


UNIT SPECIFICATIONS:					
KW	HARMONIC	VOLT	HZ	PHASE	FLA
15	5TH	400	50	3	32
ENCLOSURE		NEMA 1			
APPROX.WT. LBS.		125			



SYMBOL	TCI PART NUMBER
LR	KDRH32T
TR	KTR5L55HG
CAP1. (10 KVAR)	KCAP10A6B
XFMR.	24385
Fu1, 2, 3	15752
Fu4,6	13180
Fu5	24011
CNT	12434



HATCHED AREAS ARE SUGGESTED CUSTOMER WIRE AND EXIT LOCATIONS (BOTTOM ENTRANCE ALTERNATE-CONSULT TCI)

GROUND LUG:

WIRE RANGE	TIGHTENING TORQUE.
1/0-3 AWG.	50 IN-LBS
4-6 AWG.	45 IN-LBS
8 AWG.	40 IN-LBS
10-14 AWG.	35 IN-LBS

PB-POWER INPUT BLOCK:
WIRE RANGE-#18 TO #4 AWG.
TIGHTENING TORQUE 20 IN-LB.

ENCLOSURE NOT SHOWN
CUSTOMER IS RESPONSIBLE FOR INSTALLATION TO MEET ALL NATIONAL AND LOCAL ELECTRICAL CODES.

SEE DRAWING# 27703 FOR SCHEMATIC

TOLERANCES (EXCEPT AS NOTED)		TOLERANCES (EXCEPT AS NOTED)		TOLERANCES (EXCEPT AS NOTED)	
DECIMAL	FRACTIONAL	DECIMAL	FRACTIONAL	DECIMAL	FRACTIONAL
XX ± .03	XXX ± .01	XX ± .03	XXX ± .01	XX ± .03	XXX ± .01
± 1/32	± 1/32	± 1/32	± 1/32	± 1/32	± 1/32
ANGULAR	± 1/2°	ANGULAR	± 1/2°	ANGULAR	± 1/2°

DRN. BY	DATE	DATE	DRG. NO.	SCALE
DSW	11/04/10	11/11/2010	104529DG	TO FIT
NO	REVISION	BY	APRVD	SHT. 1 OF 1

TCI 7878 N. 86th STREET MILWAUKEE, WI 53224

HG15LW01STC, 15KW 400/3/50, ENCLOSED, W/CNT