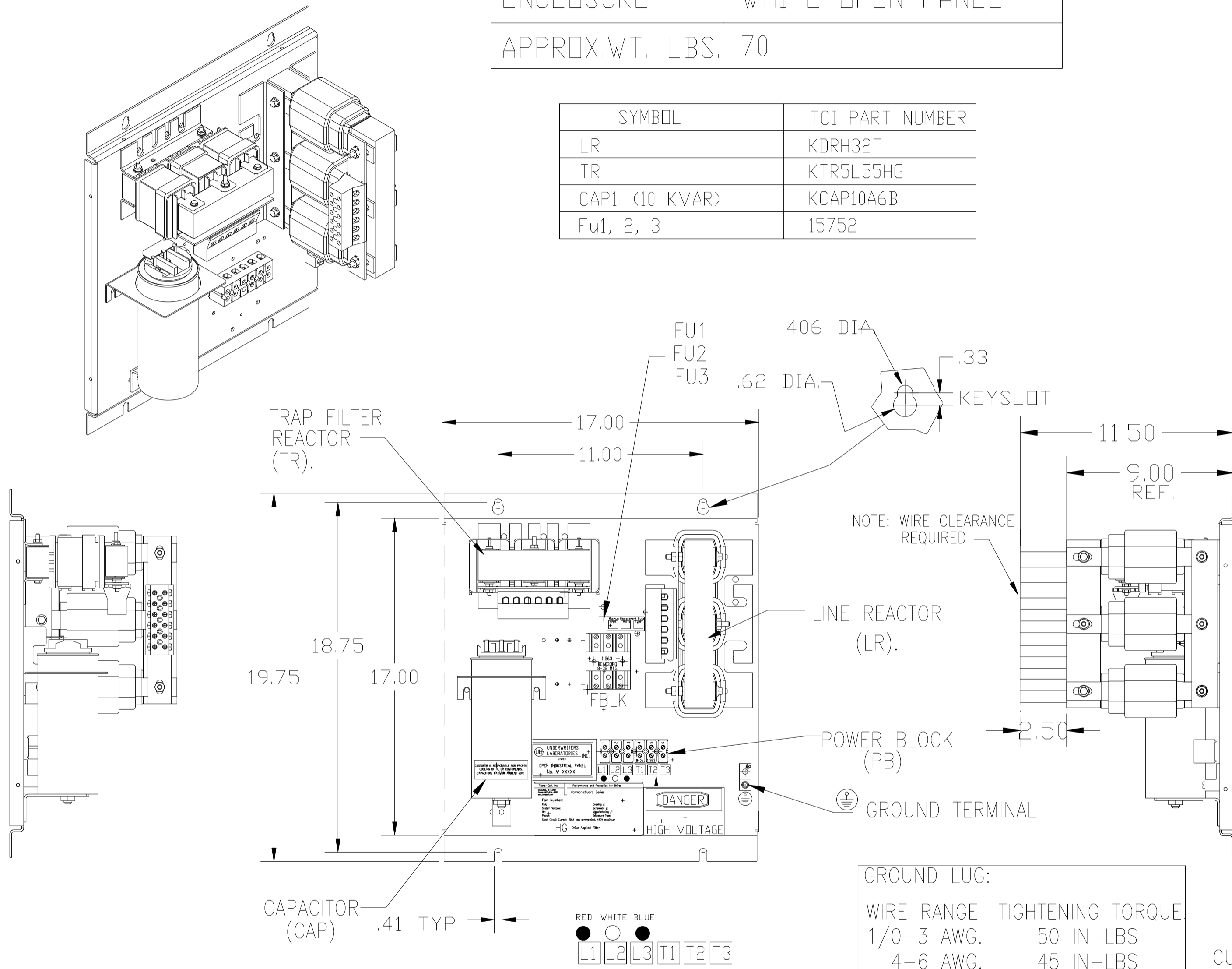


UNIT SPECIFICATIONS:					
KW	HARMONIC	VOLT	HZ	PHASE	FLA
15	5TH	400	50	3	32
ENCLOSURE		WHITE OPEN PANEL			
APPROX.WT. LBS.		70			

SYMBOL	TCI PART NUMBER
LR	KDRH32T
TR	KTR5L55HG
CAP1. (10 KVAR)	KCAP10A6B
Fu1, 2, 3	15752



PB—POWER INPUT BLOCK:
WIRE RANGE—#18 TO #4 AWG.
TIGHTENING TORQUE 20 IN-LB.

GROUND LUG:	
WIRE RANGE	TIGHTENING TORQUE
1/0-3 AWG.	50 IN-LBS
4-6 AWG.	45 IN-LBS
8 AWG.	40 IN-LBS
10-14 AWG.	35 IN-LBS

CUSTOMER IS RESPONSIBLE FOR PROPER COOLING OF FILTER COMPONENTS. CAPACITORS MAXIMUM AMBIENT 50°C.

CUSTOMER IS RESPONSIBLE FOR INSTALLATION TO MEET ALL NATIONAL AND LOCAL ELECTRICAL CODES.

SEE DRAWING# 27709 FOR SCHEMATIC

				TOLERANCES (EXCEPT AS NOTED)	TCI 7878 N. 86th STREET MILWAUKEE, WI 53224
				DECIMAL	
				XX ± .03	HG15LW00ST, 15KW 400/3/50, OPEN
				.XXX ± .01	
				FRACTIONAL ± 1/32	DRN BY DSW DATE 11/15/2010 DWG. NO. 104497DG
				ANGULAR ± 1/2°	
A	AS BUILT	11/04/10	DSW		SCALE TO FIT
NO	REVISION	DATE	BY		