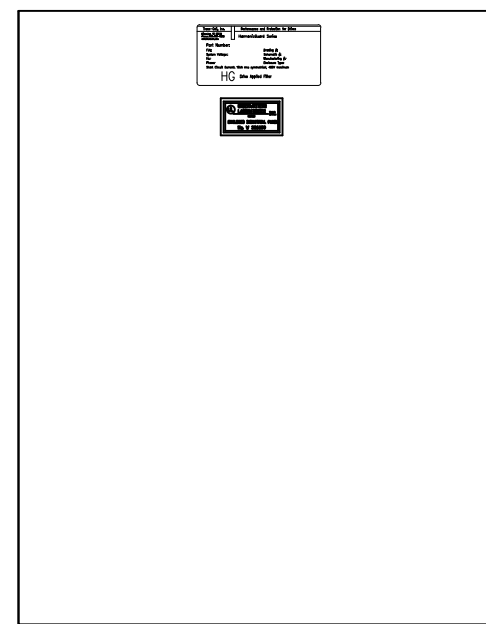
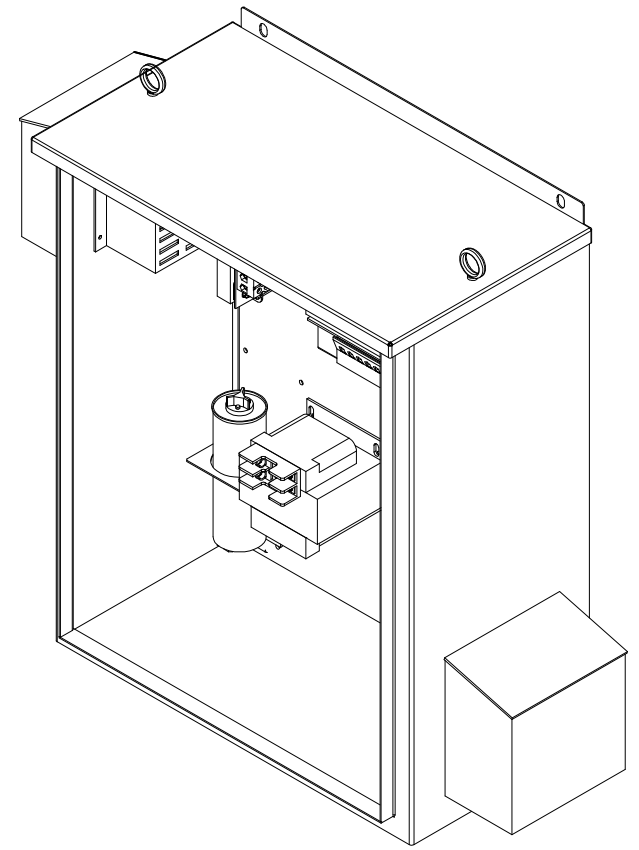
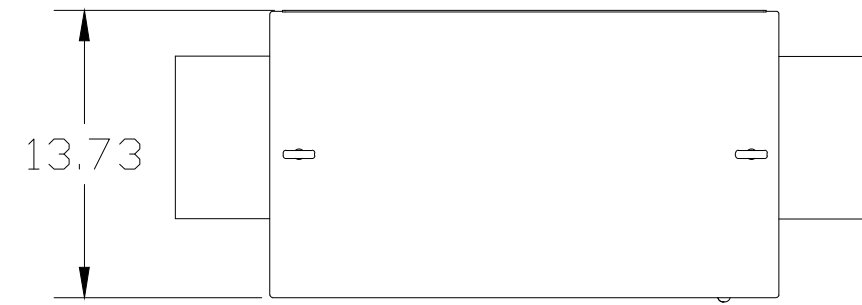
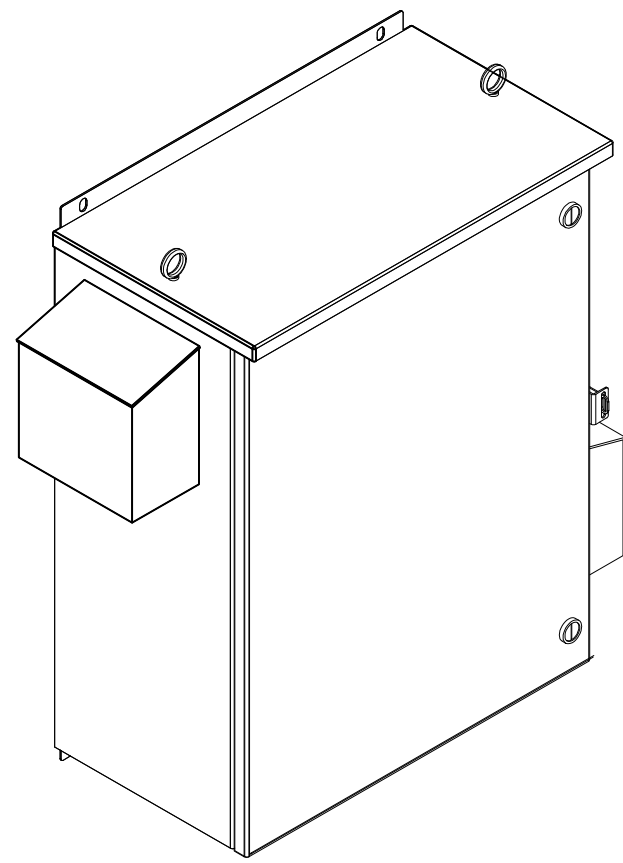


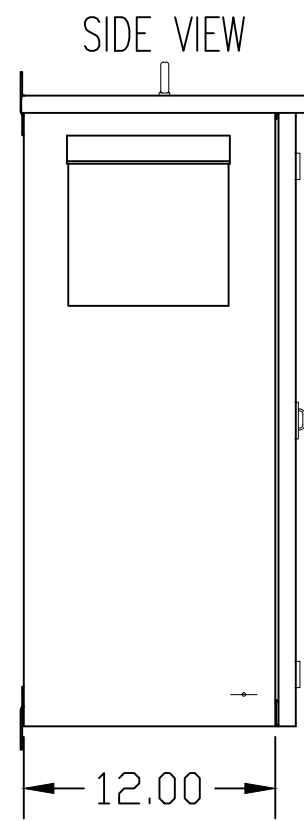
CUSTOMER IS RESPONSIBLE FOR INSTALLATION TO MEET ALL NATIONAL AND LOCAL ELECTRICAL CODES.

NOTE: USE ONLY HUBS OR FITTINGS THAT COMPLY WITH UL514B FOR TYPE 3R ENCLOSURES.

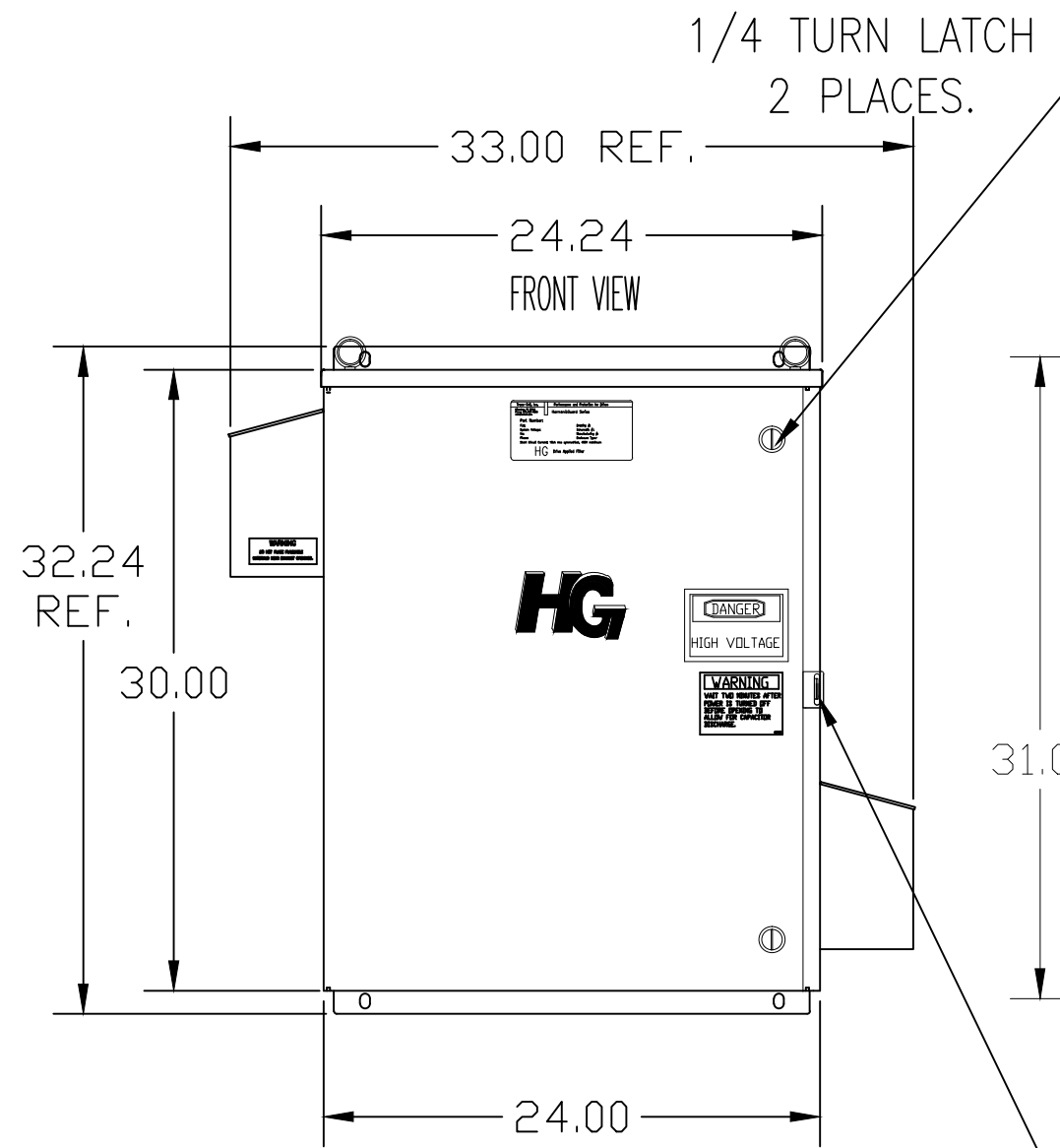
SEE DWG# 26972-2 FOR SCHEMATIC



INSIDE DOOR



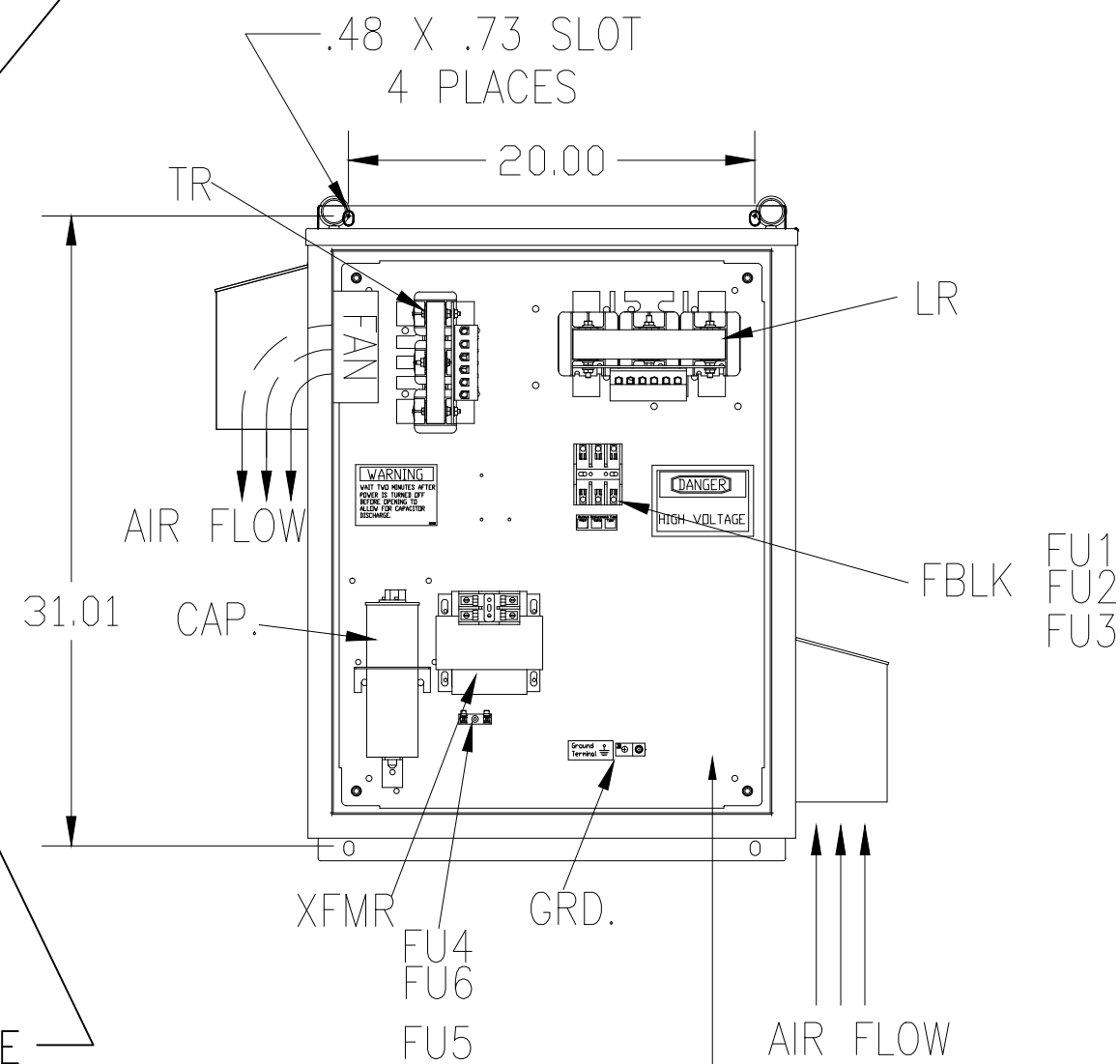
SIDE VIEW



1/4 TURN LATCH
2 PLACES.

HG

HASP AND STAPLE FOR PADLOCKING.



VIEW WITHOUT DOOR

AIR FLOW

L1 L2 L3 T1 T2 T3

SUGGESTED CUSTOMER WIRE ENTRY AND EXIT LOCATION

UNIT SPECIFICATIONS:					
KVAR	HARMONIC	VOLT	HZ	PHASE	HP
5	5TH	600	60	3	15
ENCLOSURE		UL TYPE 3R			
COLOR		WHITE			
APPROX.WT. LBS.		135			

SYMBOL	TCI PART NUMBER
LR	KDRF41T
TR	KTR5C65HG
CAP. (5 KVAR), 1 PLACE.	KCAP5C6A
XFMR.	24381
Fu1, 2, 3	11263
Fu4,6	23405
Fu5	17567

PB-POWER INPUT BLOCK:
WIRE RANGE-#18 TO #4 AWG.
TIGHTENING TORQUE 20 IN-LB.

GROUND LUG:
WIRE RANGE-1/0 TO #14 AWG.
1/0 AWG thru 2 AWG 50 IN-LBS. MAX.
4 AWG thru 6 AWG 45 IN-LBS. MAX.
8 AWG 40 IN-LBS. MAX.
10 AWG thru 14 AWG 35 IN-LBS. MAX.

TCI, LLC CLAIMS PROPRIETARY RIGHTS IN THE MATERIAL HEREIN DISCLOSED. IT IS SUPPLIED WITHOUT PREJUDICE TO ANY PATENT RIGHTS OF TCI AND MAY NOT BE REPRODUCED OR USED TO MANUFACTURE ANYTHING SHOWN THEREIN WITHOUT WRITTEN PERMISSION FROM TCI.				TOLERANCES (EXCEPT AS NOTED)	W132 N10611 Grant Drive Germantown, WI 53022 HG15CW03ST, 15HP 600/3/60 UL TYPE 3R
				DECIMAL	
				.XX ±.12 .XXX±.06	
				FRACTIONAL ± 1/32	
	Δ 2641 ADD EYEBOLTS	10/13/09	DSW	ANGULAR ± 1/2°	DRN. BY DSW DATE 2/24/09 DWG. NO. 103634DG
	NO REVISION	DATE	BY		SCALE TO FIT SIZE C SHT. 1 OF 1