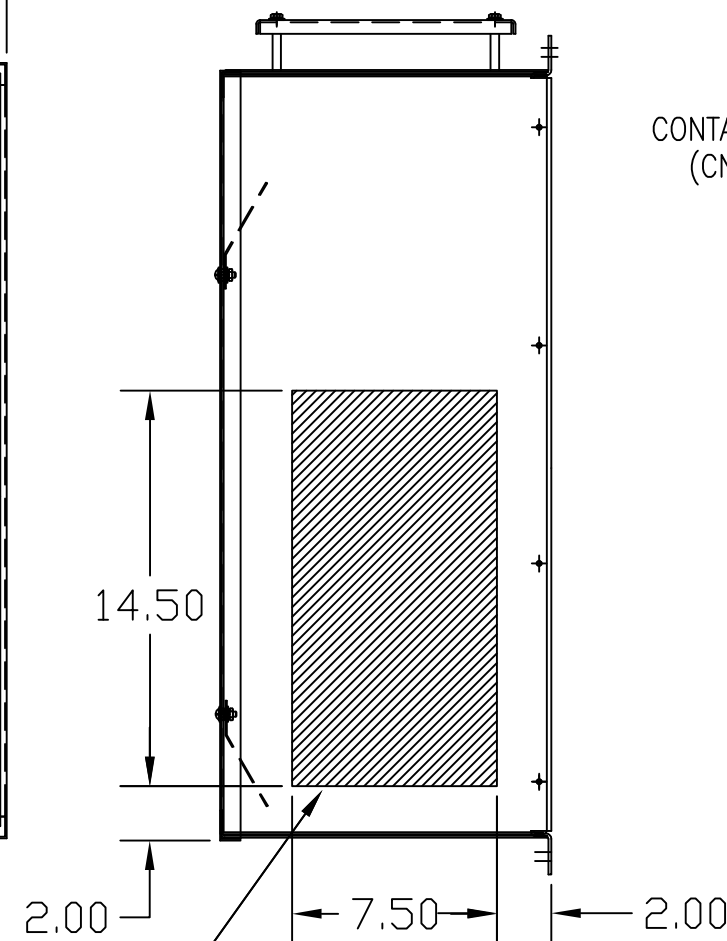
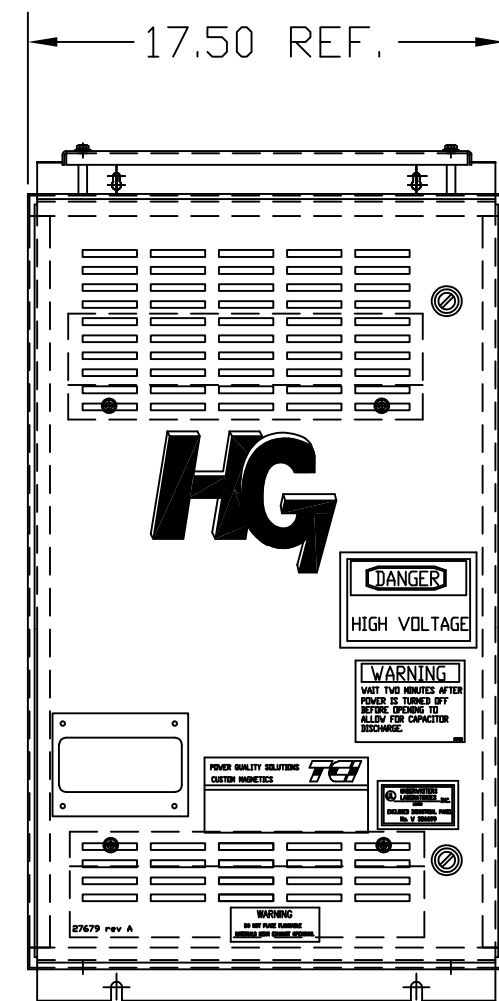
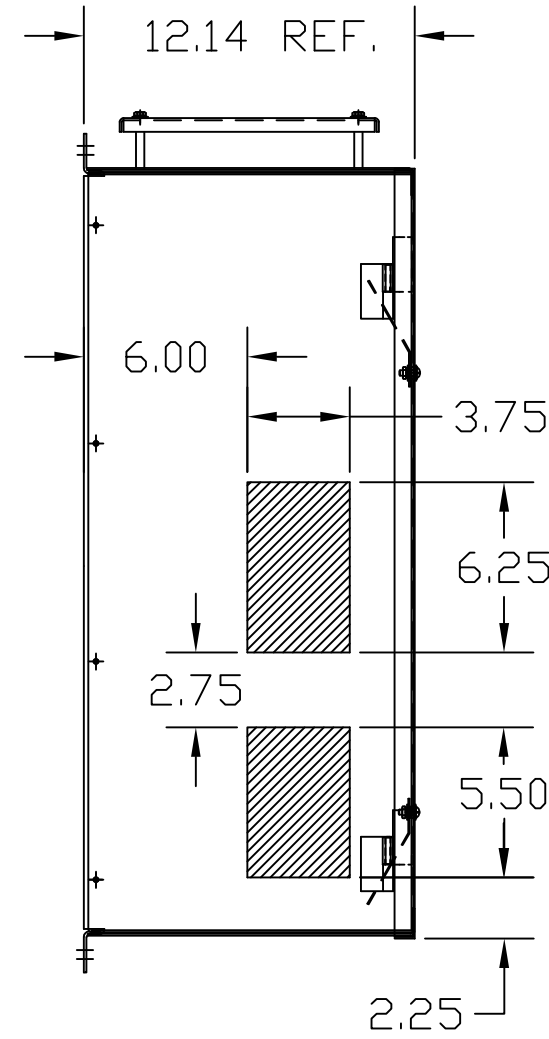
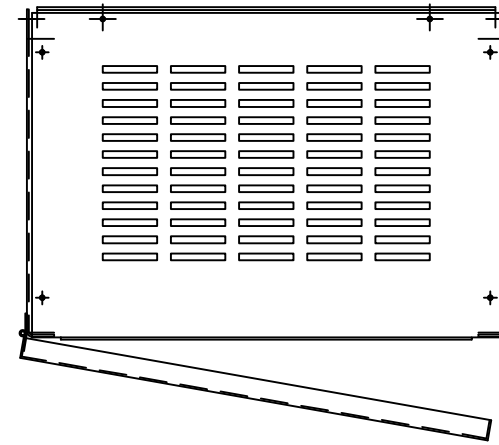
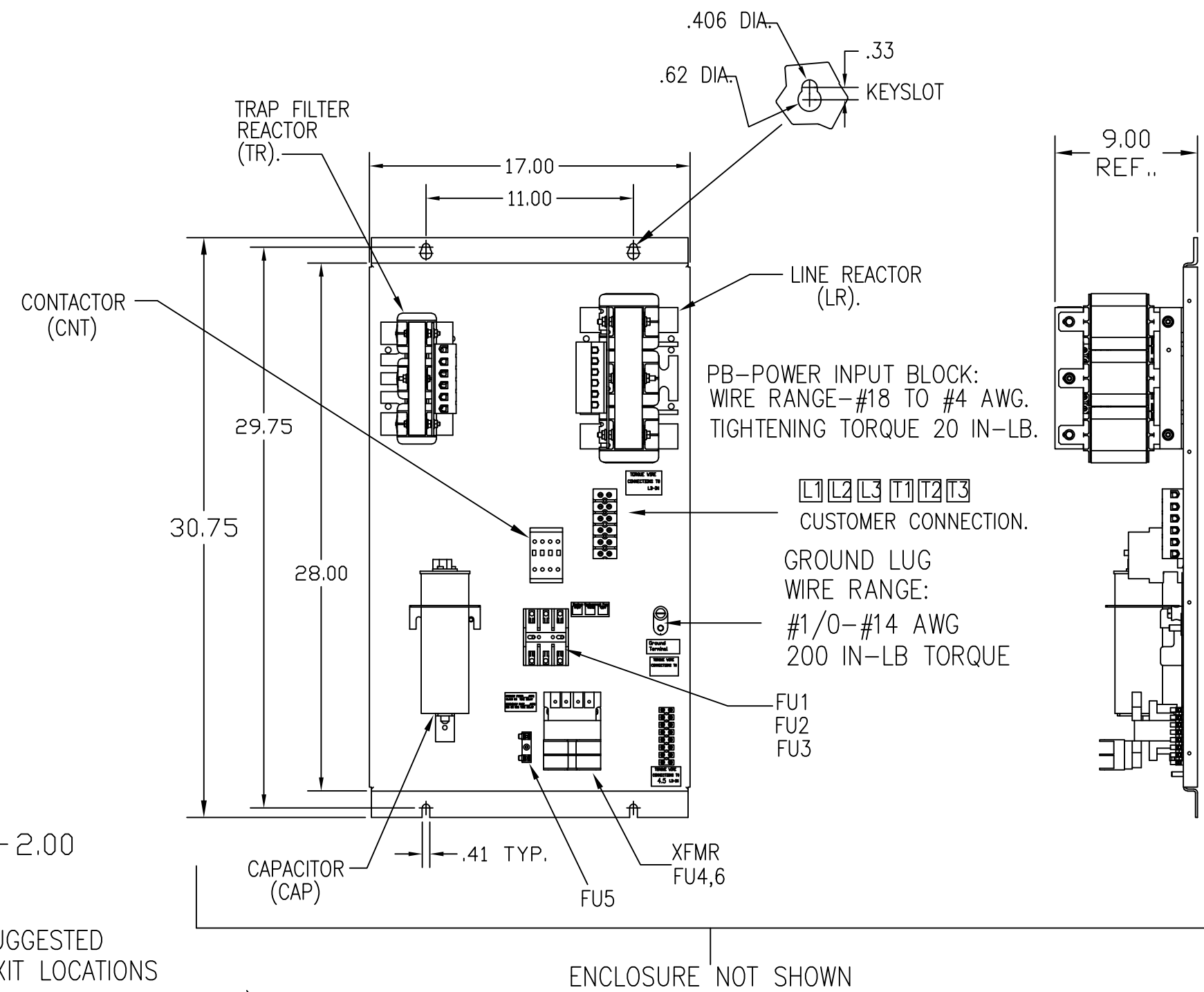
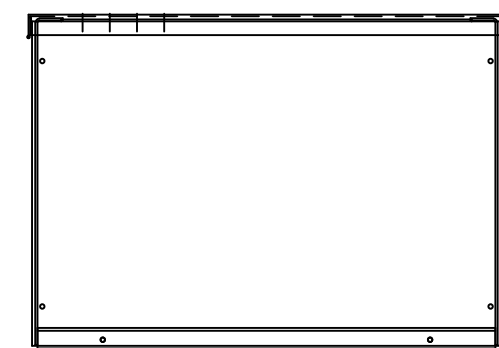


UNIT SPECIFICATIONS:						
KVAR	HARMONIC	VOLT	HZ	PHASE	HP	
5	5TH	600	60	3	15	
ENCLOSURE	NEMA 1					
OPTIONS	WITH CONTACTOR					
APPROX.WT. LBS.	115					

SYMBOL	TCI PART NUMBER
LR	KDRF41T
TR	KTR5C65HG
CAP	KCAP5C6A
XFMR.	24385
Fu1, 2, 3	11262
Fu4,6	24126
Fu5	13364
CNT	12434



HATCHED AREAS ARE SUGGESTED CUSTOMER WIRE AND EXIT LOCATIONS (BOTTOM ENTRANCE ALTERNATE-CONSULT TCI)



SEE DWG# 26878 FOR SCHEMATIC

CUSTOMER IS RESPONSIBLE FOR INSTALLATION TO MEET ALL NATIONAL AND LOCAL ELECTRICAL CODES.

TOLERANCES (EXCEPT AS NOTED)				TCI® W132 N10611 Grant Drive Germantown, WI 53022	
DECIMAL				HG15CW01STC 15HP 600/3/60, ENCLOSED, WITH CNT	
.XX ± .03					
.XXX ± .01					
FRACTIONAL ± 1/32				DRN. BY DSW	DATE 11/12/08
ANGULAR ± 1/2°				SCALE TO FIT	APRVD. C 103548DG
A	2702 RVSD UL SHIELD	12/14/10	RJC	DWG. NO. 103548DG	
NO	REVISION	DATE	BY	SHT.1 OF1	