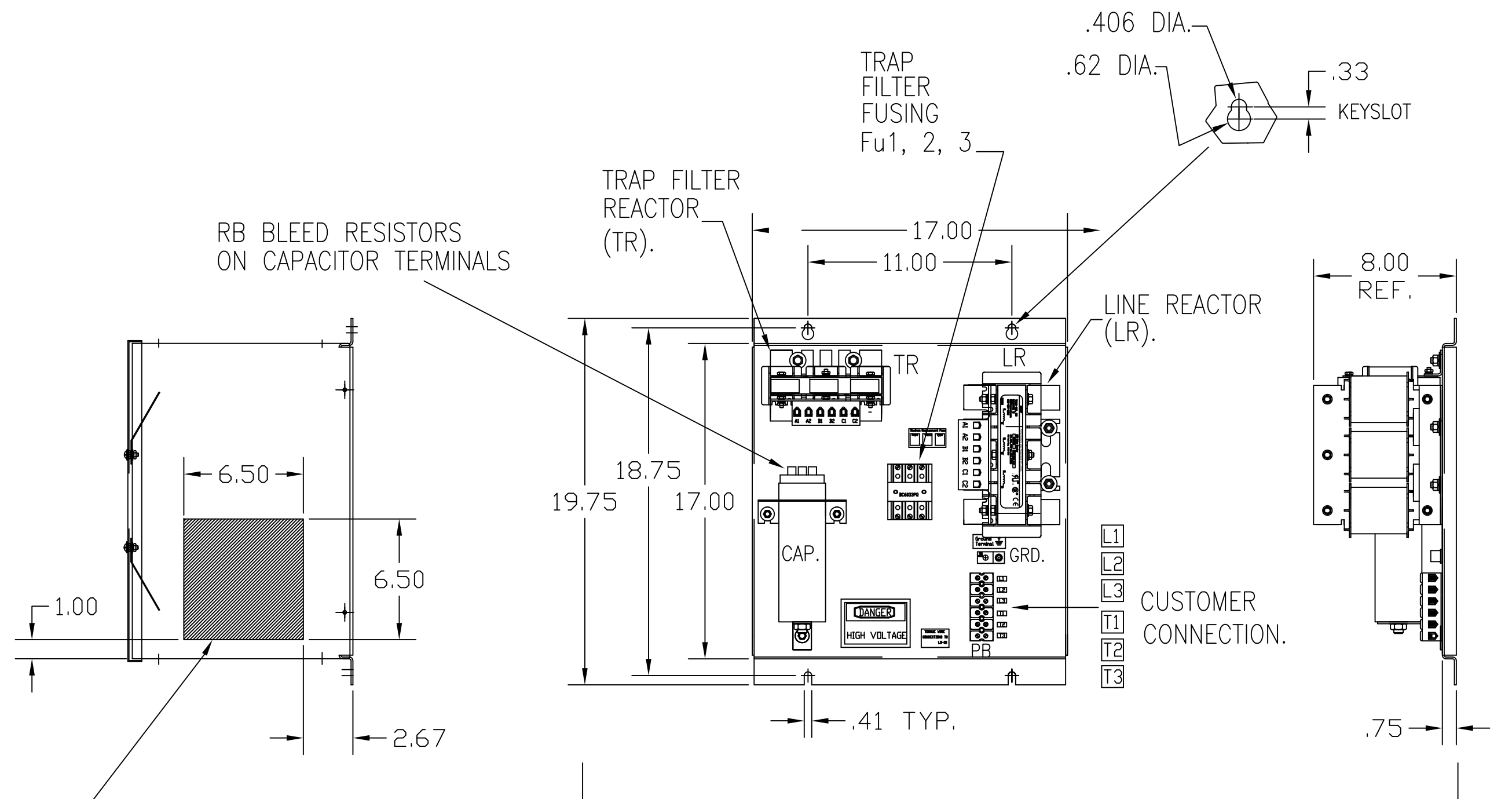
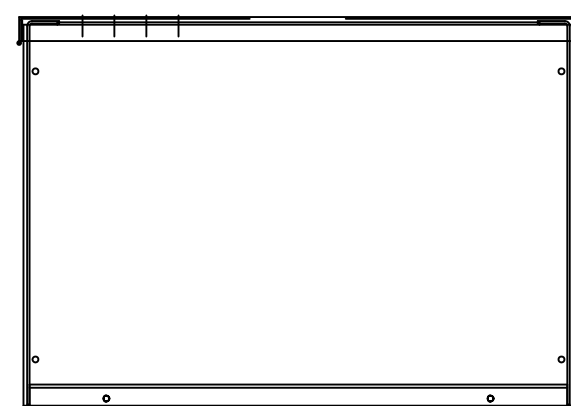
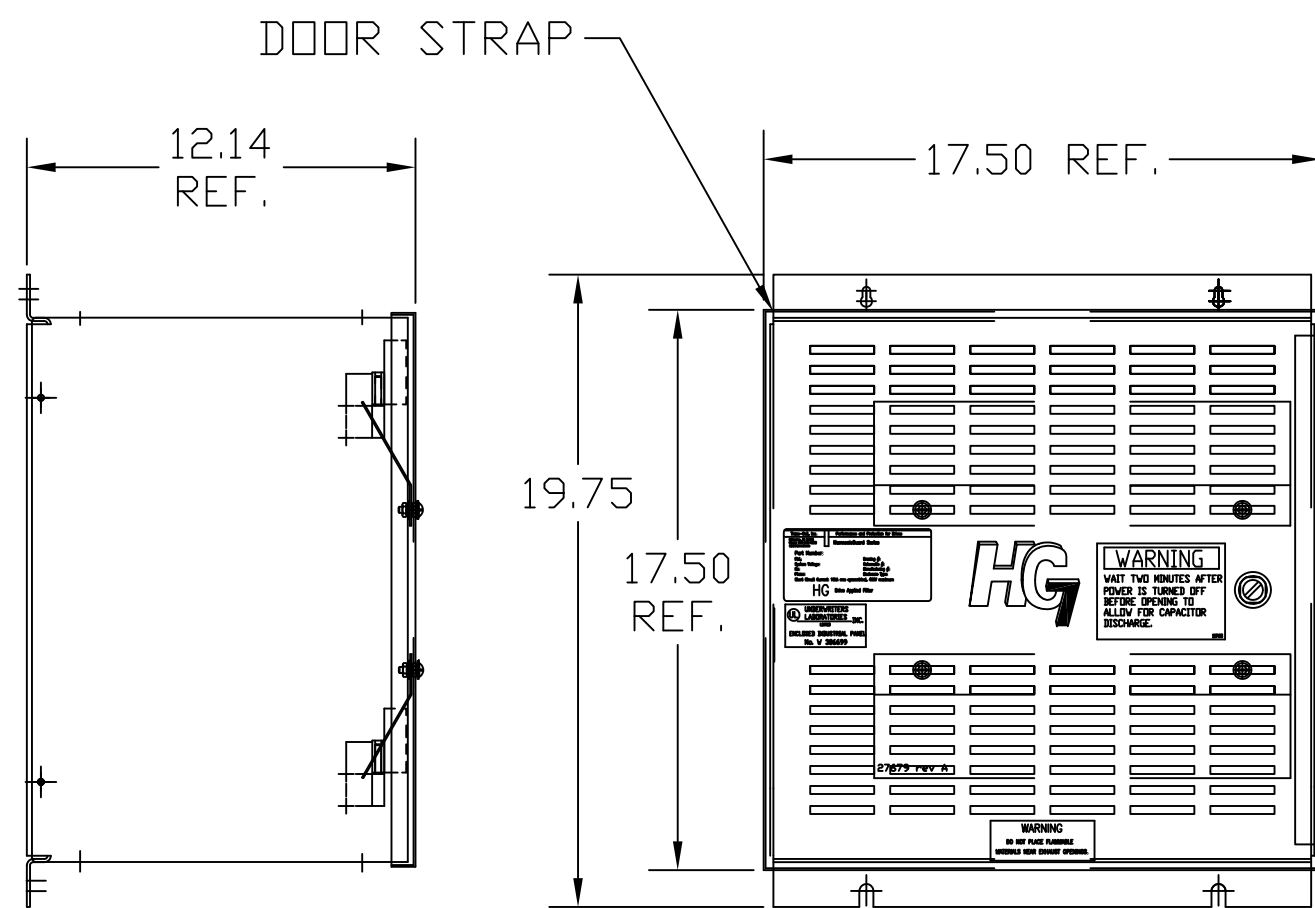
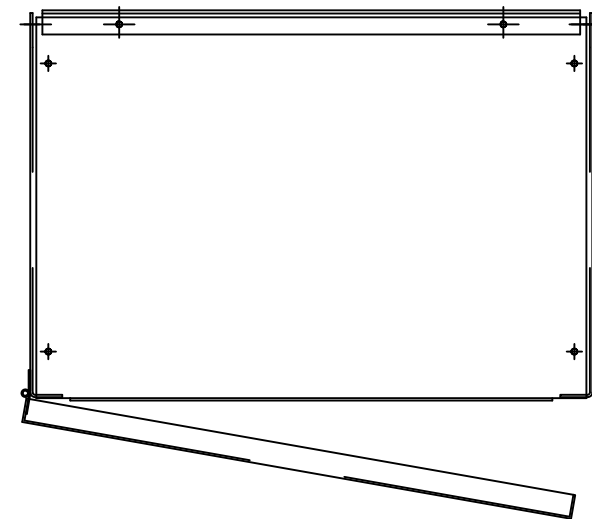


UNIT SPECIFICATIONS:					
KVAR HARMONIC	VOLT	HZ	PHASE	HP	
5	5TH	600	60	3	15
ENCLOSURE	NEMA 1				
APPROX.WT. LBS.	75				

SYMBOL	TCI PART NUMBER
LR	KDRF41T
TR	KTR5C65HG
CAP.	KCAP5C6A
Fu1, 2, 3	11262



HATCHED AREAS ARE SUGGESTED CUSTOMER WIRE AND EXIT LOCATIONS (BOTTOM ENTRANCE ALTERNATE-CONSULT TCI)

ENCLOSURE NOT SHOWN

PB-POWER INPUT BLOCK:
WIRE RANGE-#18 TO #4 AWG.
TIGHTENING TORQUE 20 IN-LB.

GROUND LUG:
WIRE RANGE-1/0 TO #14 AWG.
TORQUE:
#1/0-#2 AWG 50 LB-IN
#4-#6 AWG 45 LB-IN
#8 AWG 40 LB-IN
#10 -#14 AWG 35 LB-IN

SEE 25114 FOR SCHEMATIC

CUSTOMER IS RESPONSIBLE FOR INSTALLATION TO MEET ALL NATIONAL AND LOCAL ELECTRICAL CODES.

TCI, LLC CLAIMS PROPRIETARY RIGHTS IN THE MATERIAL HEREIN DISCLOSED. IT IS SUPPLIED WITHOUT PREJUDICE TO ANY PATENT RIGHTS OF TCI AND MAY NOT BE REPRODUCED OR USED TO MANUFACTURE ANYTHING SHOWN THEREIN WITHOUT WRITTEN PERMISSION FROM TCI.				TOLERANCES (EXCEPT AS NOTED): DECIMAL	TCI ® W132 N10611 Grant Drive Germanstown, WI 53022	
				.XX ± .02		
	C	2702 RVSD UL SHIELD	12/14/10	RJC	.XXX ± .01	HG15CW01ST 15HP, 600/3/60, TYPE 1
	B	2516, CAP WAS 17815	9/30/07	RJC	FRACTIONAL ± 1/32	
A	MOVED POWER BLOCK	2/21/06	DSW	ANGULAR ± 1/2°	DRN. BY DSW DATE 3/16/05 DWG. NO. 102473DG	
NO	REVISION	DATE	BY	SCALE TO FIT	SIZE C SHT.1 OF 1	