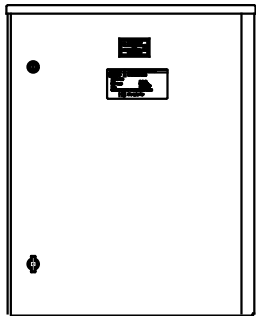
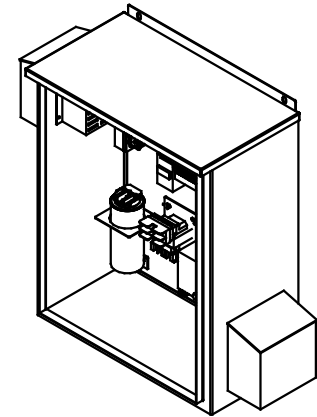
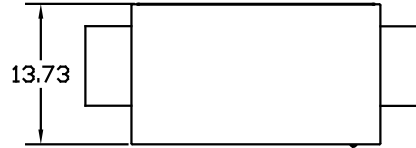
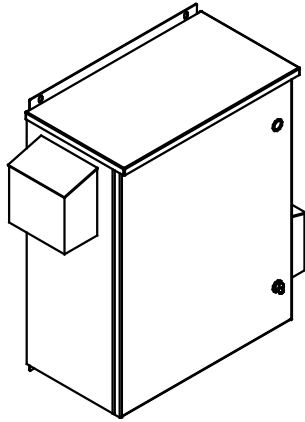


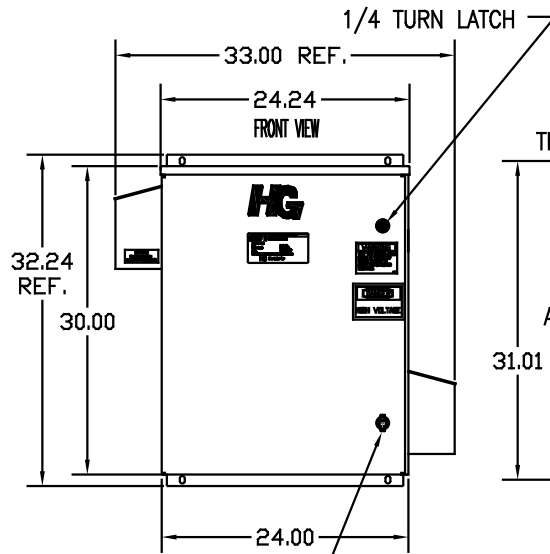
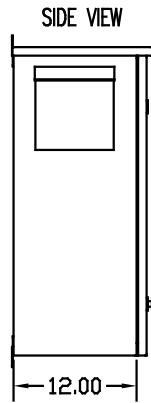
SEE DWG# 26897 FOR SCHEMATIC

CUSTOMER IS RESPONSIBLE FOR INSTALLATION TO MEET ALL NATIONAL AND LOCAL ELECTRICAL CODES.

NOTE: USE ONLY HUBS OR FITTINGS THAT COMPLY WITH UL514B FOR TYPE 3R ENCLOSURES.



INSIDE VIEW OF DOOR



1/4 TURN LATCH

33.00 REF.

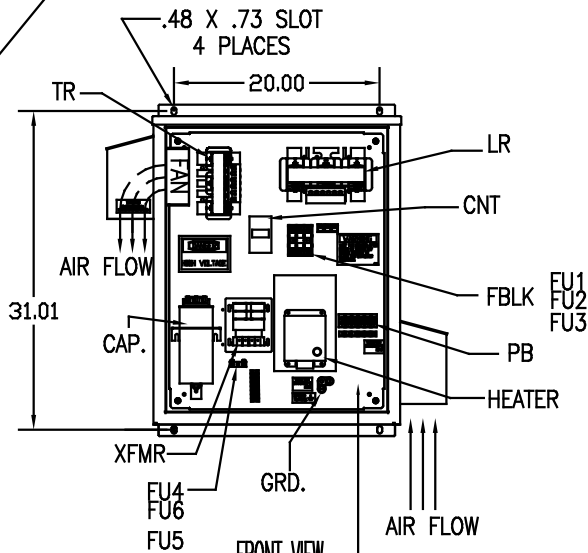
24.24 FRONT VIEW

32.24 REF.

30.00

24.00

PADLOCKABLE WING NUT



FRONT VIEW WITHOUT DOOR

AIR FLOW

1 2 3 T1 T2 T3

SUGGESTED CUSTOMER WIRE ENTRY AND EXIT LOCATION

UNIT SPECIFICATIONS:					
KVAR HARMONIC	VOLT	HZ	PHASE	HP	
5	5TH	240	60	3	15
ENCLOSURE		UL TYPE 3R			
COLOR		WHITE			
FEATURES		CONTACTOR, HEATER			
APPROX.WT. LBS.		142			

SYMBOL	TCI PART NUMBER
LR	KDRF21T
TR	KTR5B65HG
CAP. (3 KVAR), 1 PLACE	KCAP5B6B
XFMR.	23896
Fu1, 2, 3	22665
Fu4,6	14106
Fu5	17567
CNT	26550
HEATER (200 WATT)	11638

PB-POWER INPUT BLOCK:  
WIRE RANGE-#18 TO #4 AWG.  
TIGHTENING TORQUE 20 IN-LB.

GROUND LUG:  
WIRE RANGE-1/0 TO #14 AWG.  
TIGHTENING TORQUE 200 IN-LB.

NO	REVISION	DATE	BY	TOLERANCES EXCEPT AS NOTED: DIMEN. XX ±.12 .XXX±.06 FRACTIONAL ± 1/32 ANGULAR ± 1/2°	SCALE TO FIT	DATE	APPROV	DATE	APPROV

**TCI** 7878 N. 86th STREET MILWAUKEE, WI 53224

HG15BW03STCH, 15HP  
240/3/60 UL TYPE 3R

DRG BY DSW DATE 12/16/08 DWG. NO. 103766DG  
SCALE TO FIT

SHT. 1 OF 1