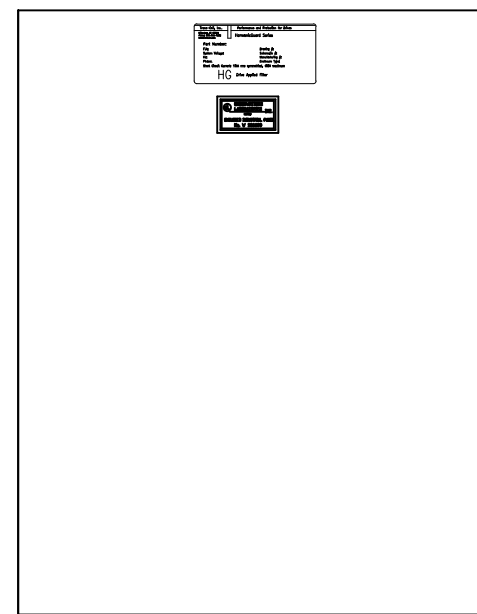
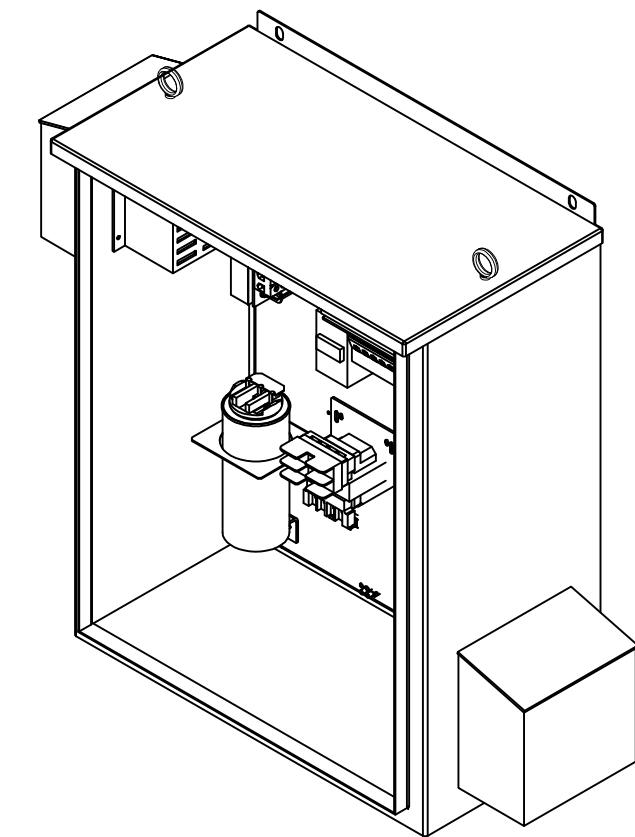
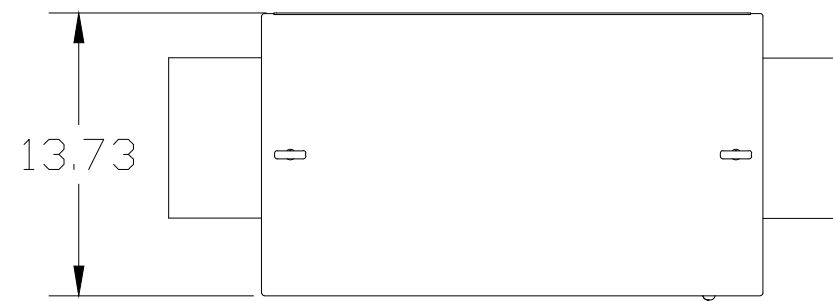
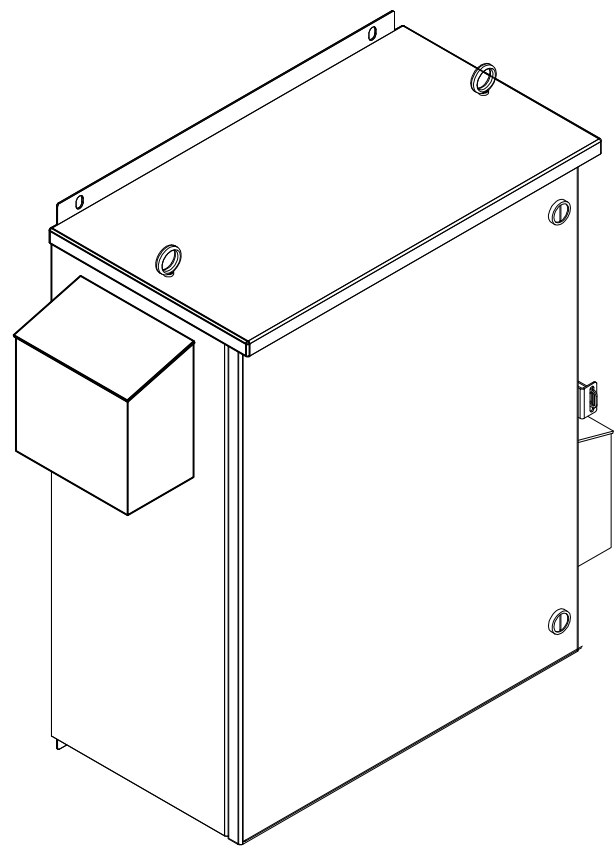


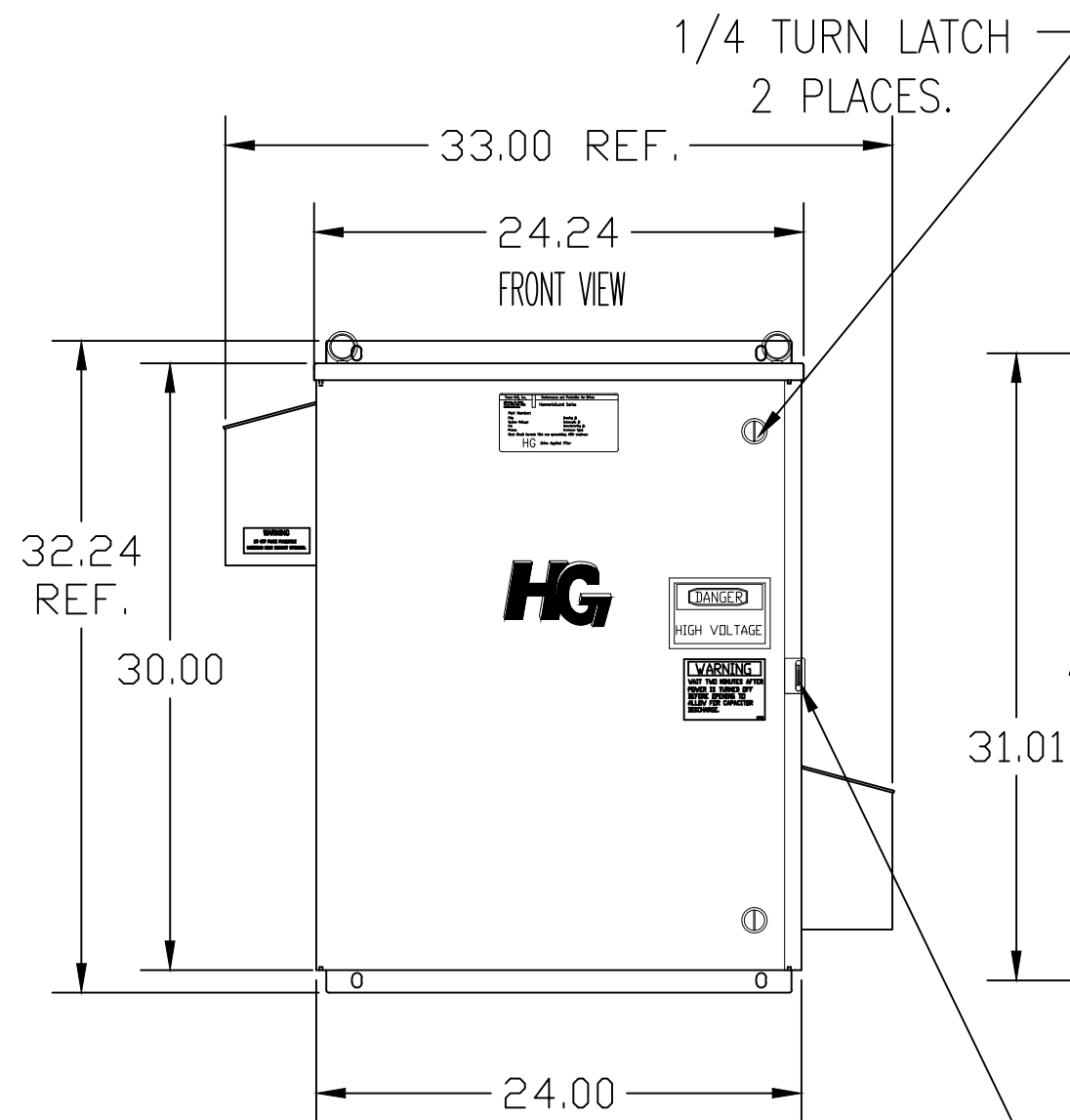
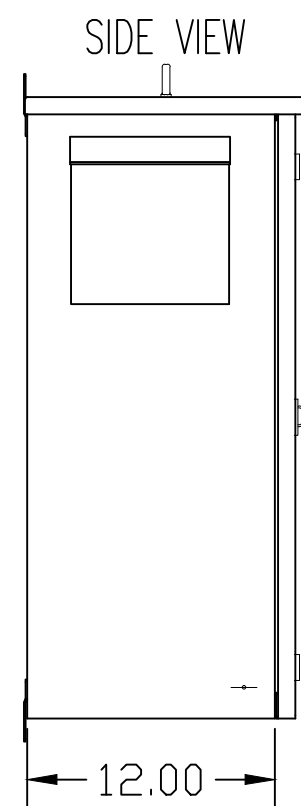
CUSTOMER IS RESPONSIBLE FOR INSTALLATION TO MEET ALL NATIONAL AND LOCAL ELECTRICAL CODES.

NOTE: USE ONLY HUBS OR FITTINGS THAT COMPLY WITH UL514B FOR TYPE 3R ENCLOSURES.

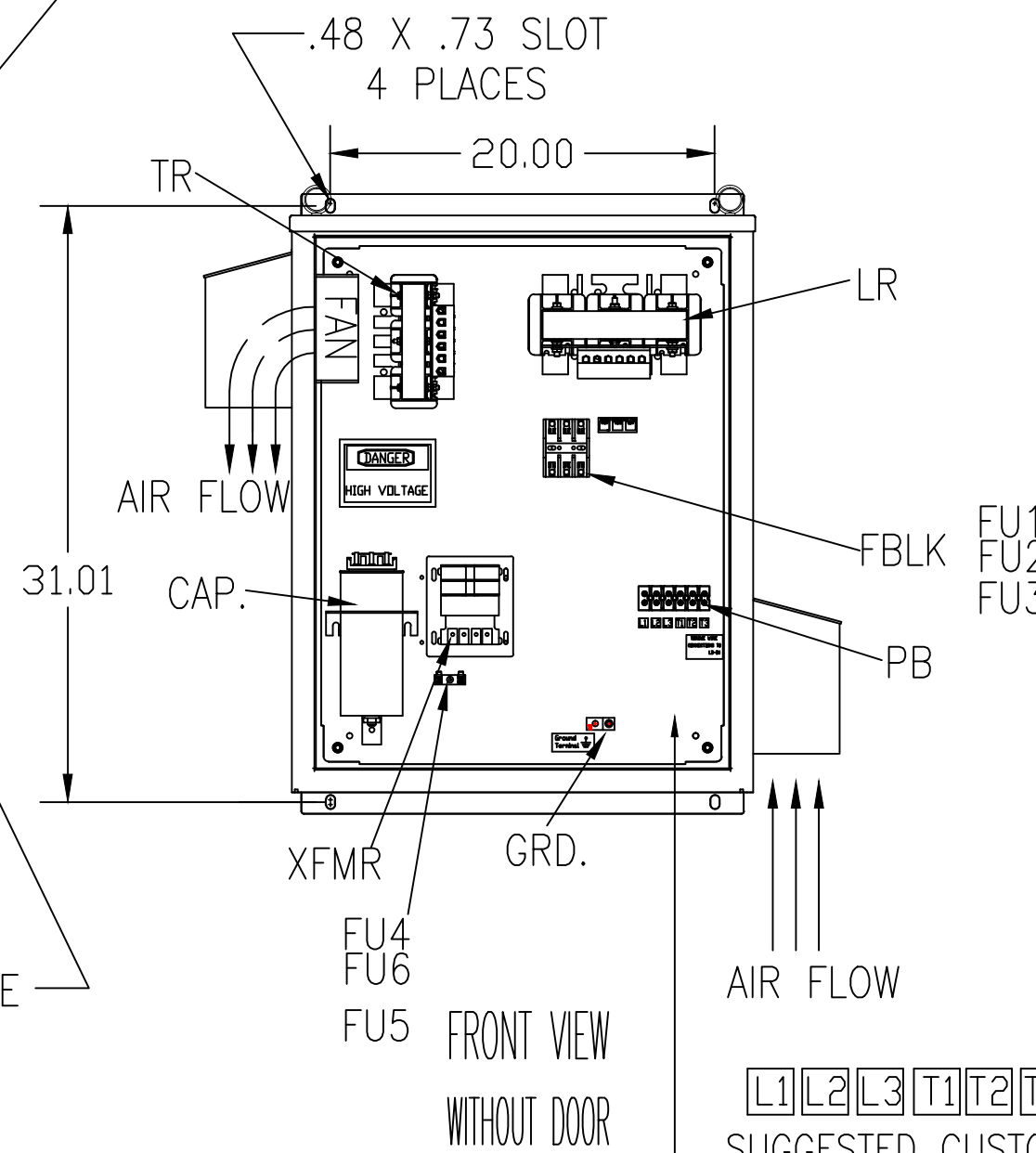
SEE DWG# 26901 FOR SCHEMATIC



INSIDE DOOR



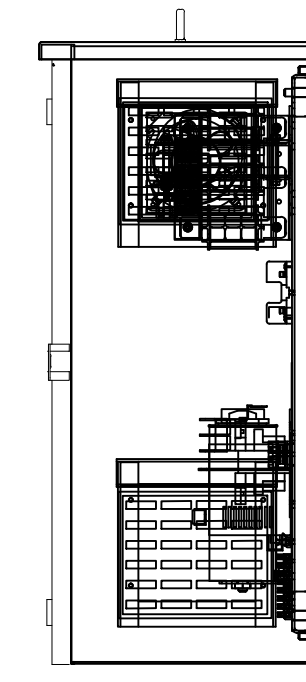
HASP AND STAPLE FOR PADLOCKING.



FRONT VIEW WITHOUT DOOR

L1 L2 L3 T1 T2 T3

SUGGESTED CUSTOMER WIRE ENTRY AND EXIT LOCATION



GROUND LUG:
 WIRE RANGE-1/0 TO #14 AWG.
 1/0 AWG thru 2 AWG 50 IN-LBS. MAX.
 4 AWG thru 6 AWG 45 IN-LBS. MAX.
 8 AWG 40 IN-LBS. MAX.
 10 AWG thru 14 AWG 35 IN-LBS. MAX.

PB-POWER INPUT BLOCK:
 WIRE RANGE-#18 TO #4 AWG.
 TIGHTENING TORQUE 20 IN-LB.

UNIT SPECIFICATIONS:					
KVAR	HARMONIC	VOLT	HZ	PHASE	HP
5	5TH	240	60	3	15
ENCLOSURE	UL TYPE 3R				
COLOR	WHITE				
APPROX.WT. LBS.	135				

SYMBOL	TCI PART NUMBER
LR	KDRF21T
TR	KTR5B65HG
CAP. (3 KVAR)	KCAP5B6B
XFMR.	23896
Fu1, 2, 3	22665
Fu4,6	14106
Fu5	17567

TCI, LLC CLAIMS PROPRIETARY RIGHTS IN THE MATERIAL HEREIN DISCLOSED. IT IS SUPPLIED WITHOUT PREJUDICE TO ANY PATENT RIGHTS OF TCI AND MAY NOT BE REPRODUCED OR USED TO MANUFACTURE ANYTHING SHOWN THEREIN WITHOUT WRITTEN PERMISSION FROM TCI.				TOLERANCES (EXCEPT AS NOTED)	W132 N10611 Grant Drive Germantown, WI 53022 HG15BW03ST, 15HP 240/3/60 UL TYPE 3R
				DECIMAL	
				.XX ±.12 .XXX±.06	
				FRACTIONAL ± 1/32	
	A 2641 ADD EYEBOLTS	10/13/09	DSW	ANGULAR ± 1/2°	DRN. BY DSW DATE 12/18/08 DWG. NO. 103656DG
	NO REVISION	DATE	BY		SCALE TO FIT SIZE C SHT. 1 OF 1