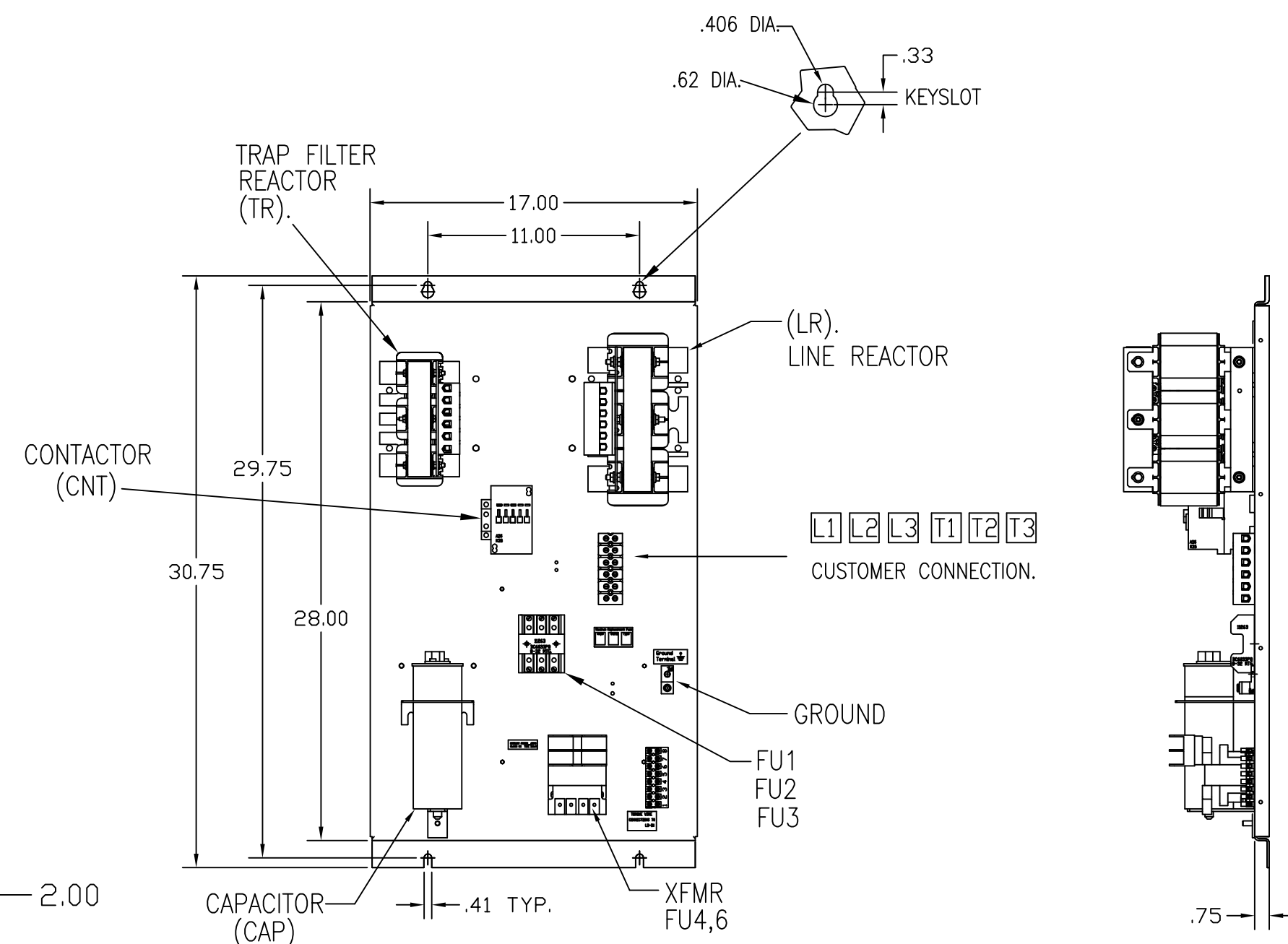
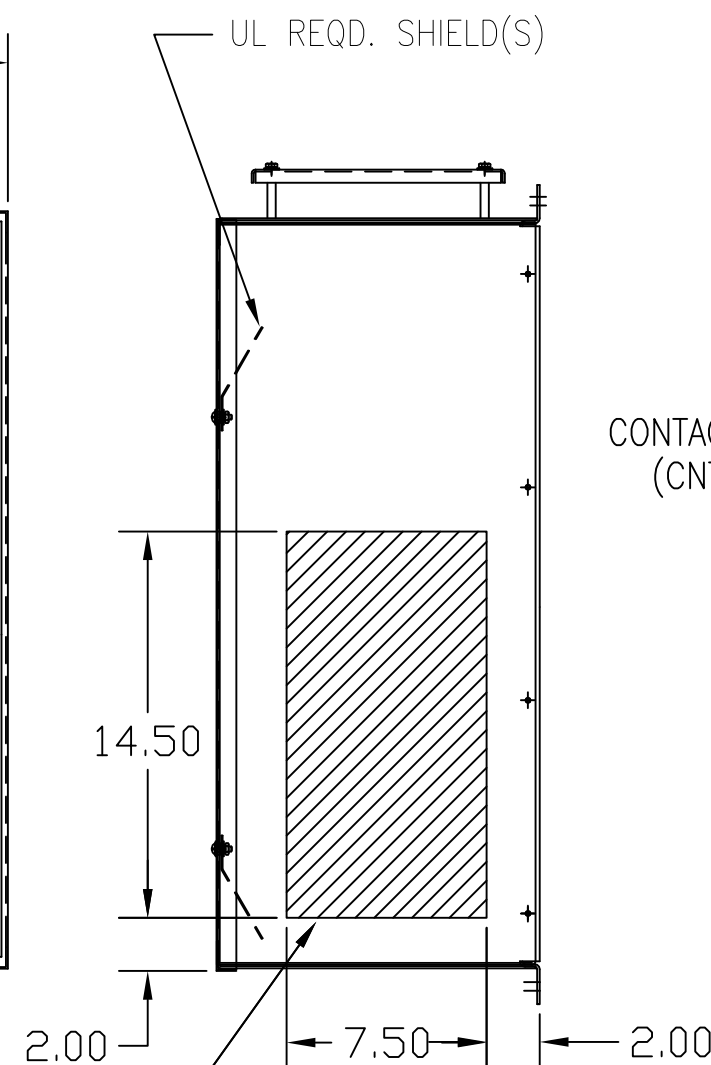
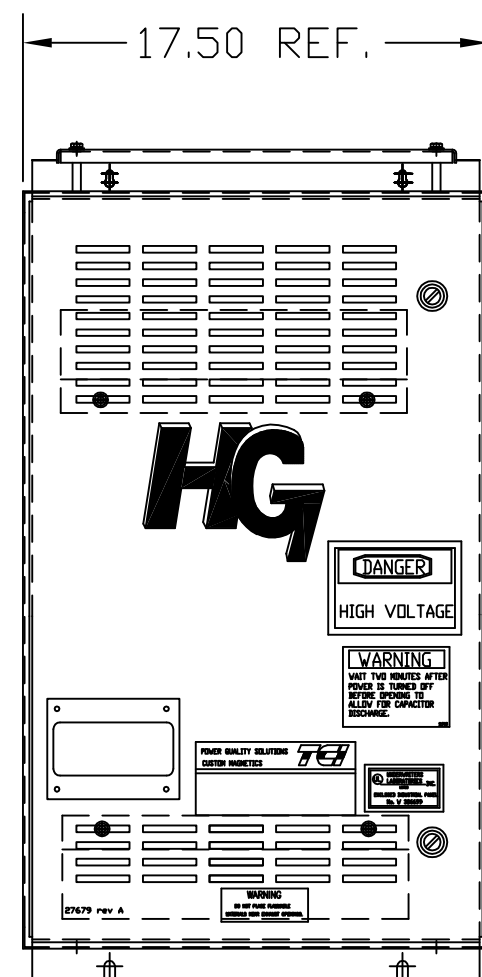
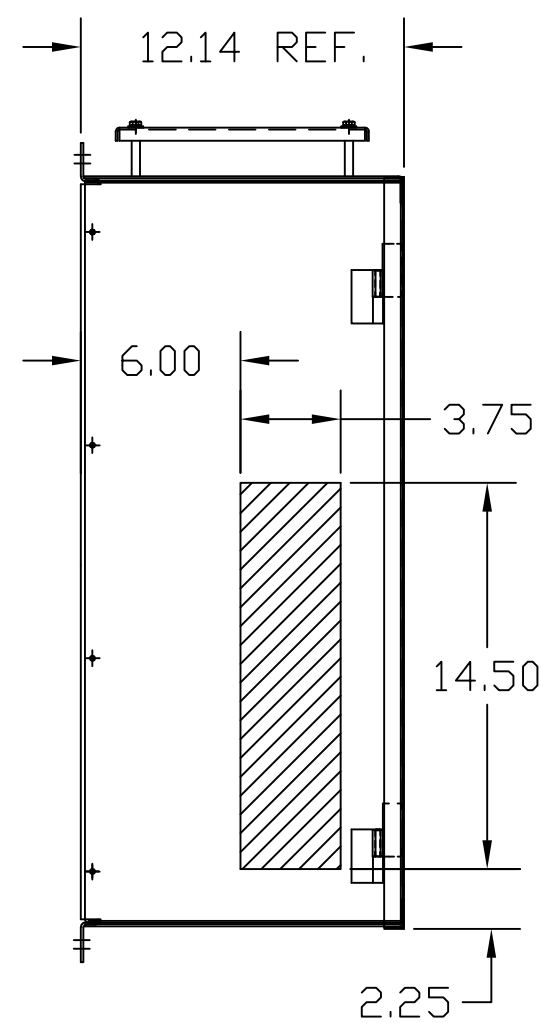


UNIT SPECIFICATIONS:					
KVAR HARMONIC	VOLT	HZ	PHASE	HP	
5	5TH	240	60	3	15
ENCLOSURE		NEMA 1			
		WITH CONTACTOR			
APPROX.WT. LBS.		125			

SYMBOL	HG15BW01STC
LR	X
TR	X
CAP1	X
XFMR.	X
Fu1, 2, 3	X
Fu4,6	X
CNT	X



HATCHED AREAS ARE SUGGESTED CUSTOMER WIRE ENTRANCE AND EXIT LOCATIONS (BOTTOM ENTRANCE ALTERNATE-CONSULT TCI)

SEE 26822 FOR SCHEMATIC

CUSTOMER IS RESPONSIBLE FOR INSTALLATION TO MEET ALL NATIONAL AND LOCAL ELECTRICAL CODES.

PB-POWER INPUT BLOCK:  
WIRE RANGE-#18 TO #4 AWG.  
TIGHTENING TORQUE 20 IN-LB.

GROUND LUG:  
WIRE RANGE-1/0 TO #14 AWG.  
1/0 AWG thru 2 AWG 50 IN-LBS. MAX.  
4 AWG thru 6 AWG 45 IN-LBS. MAX.  
8 AWG 40 IN-LBS. MAX.  
10 AWG thru 14 AWG 35 IN-LBS. MAX.

				TOLERANCES (EXCEPT AS NOTED)		TCI W132 N10611 GRANT DRIVE GERMANTOWN, WI. 53022		
				DECIMAL	.XX ± .03	HG15BW01STC, 15HP		
					.XXX ± .01			
B	3267 CNT CHANGE	12/10/15	BWM	FRACTIONAL	± 1/32	240/3/60, ENCLOSED, WITH CNT		
△	2702 REVISED UL SHIELDS	1/3/11	RJC	ANGULAR	± 1/2°			
NO	REVISION	DATE	BY			DRN. BY DSW	DATE 10/15/08	DWG. NO. 103590DG
						SCALE TO FIT	APRVD.	SHT.1 OF1