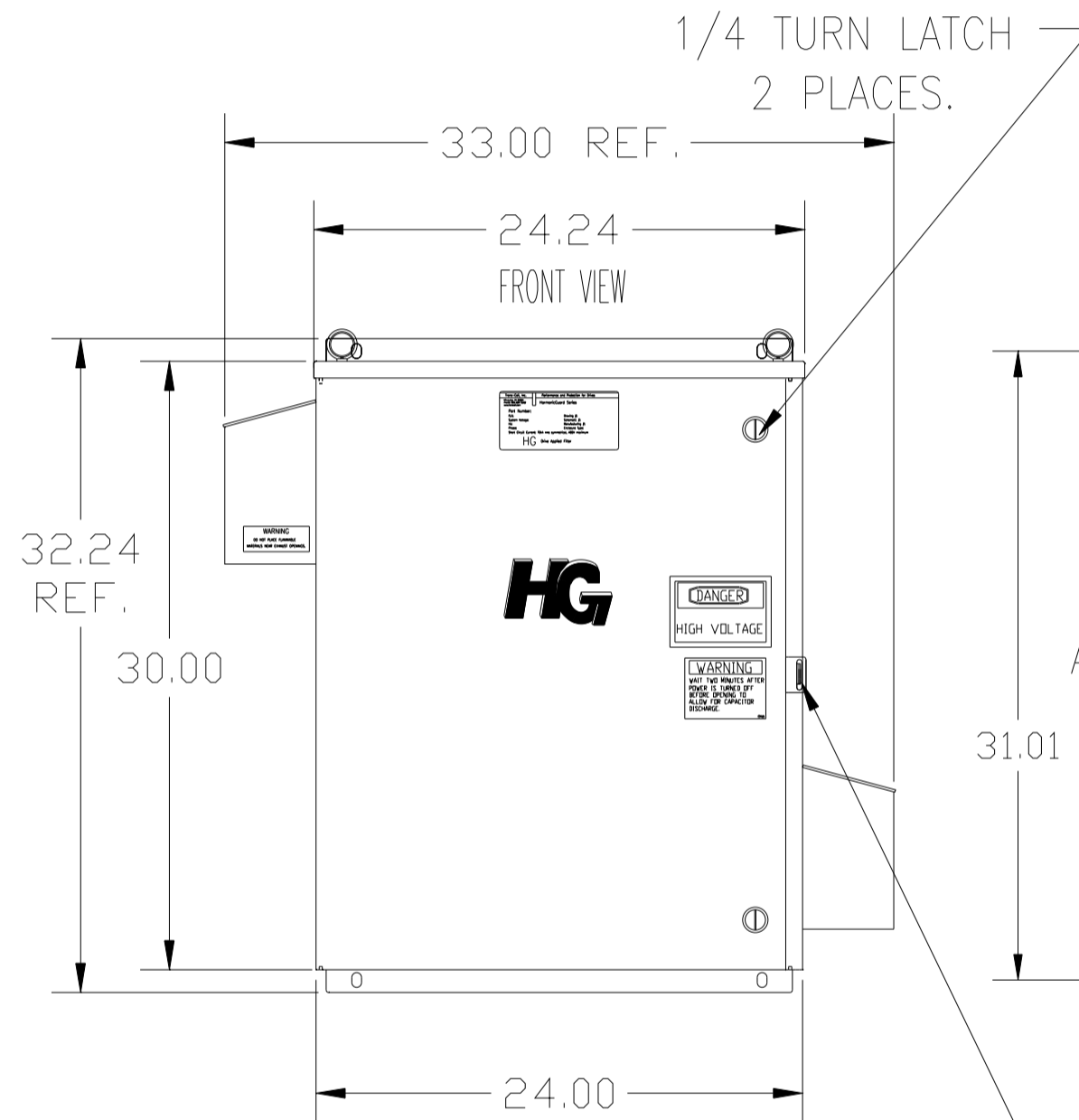
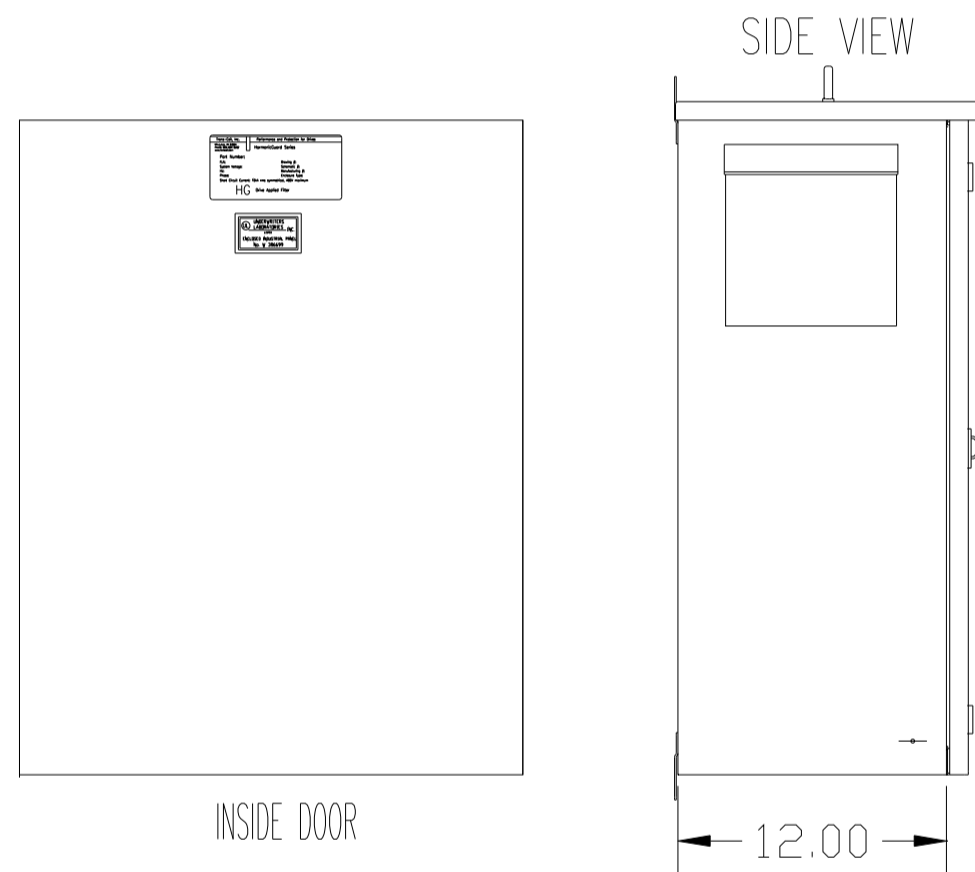
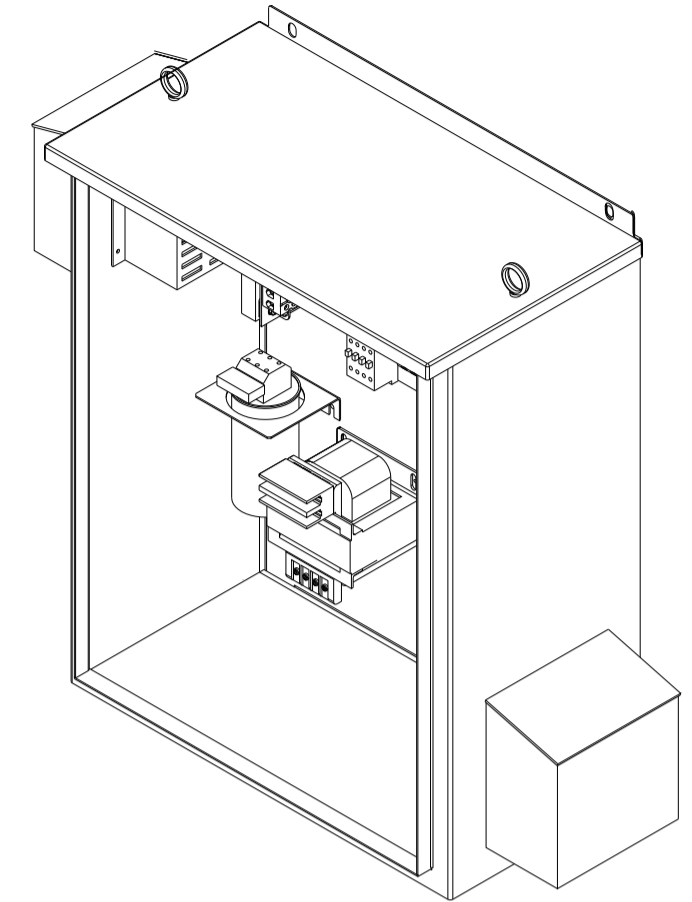
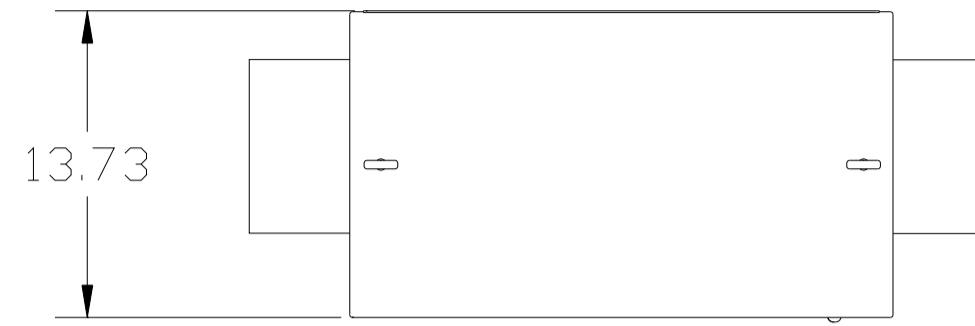


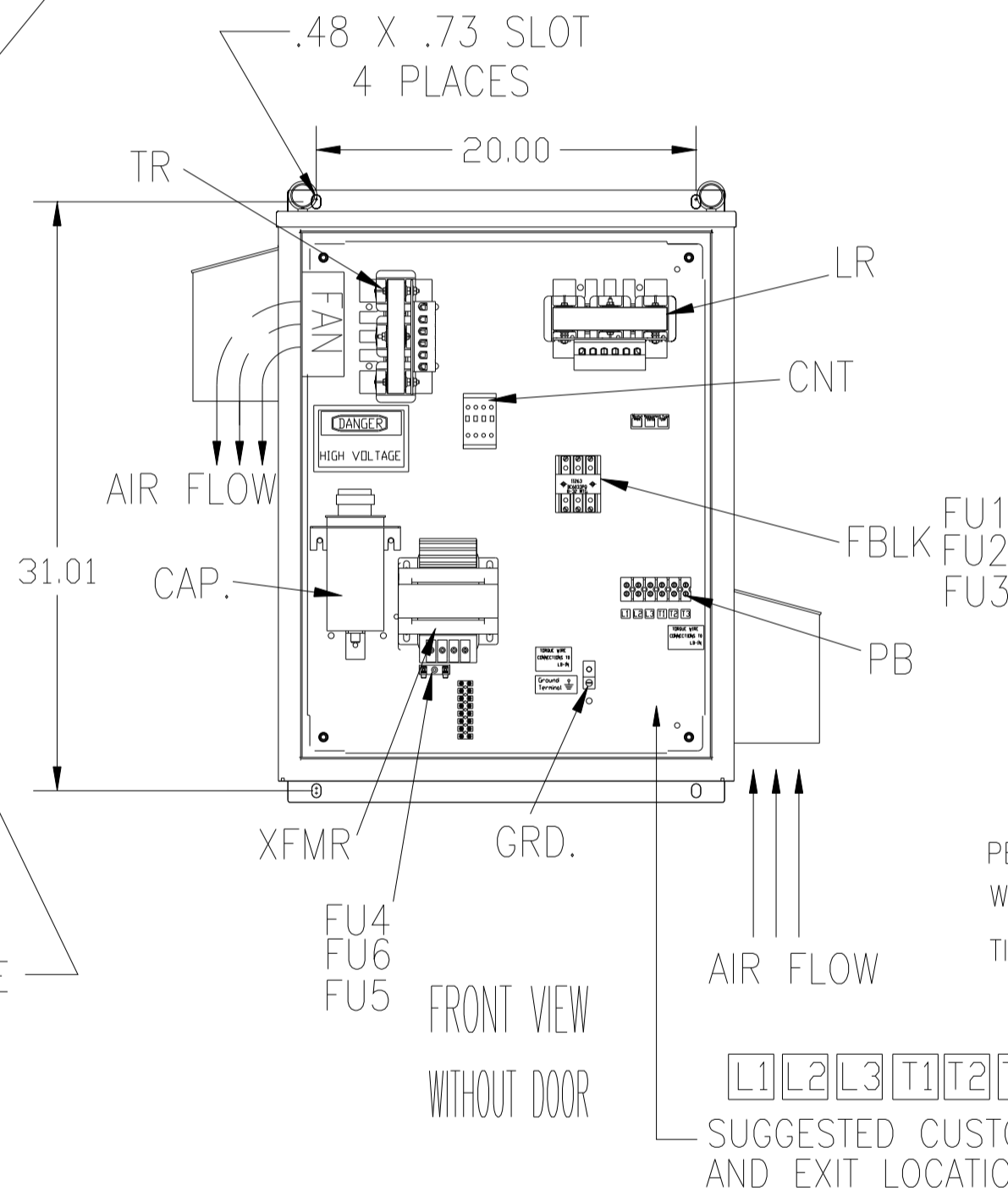
NOTE: USE ONLY HUBS OR FITTINGS THAT COMPLY WITH UL514B FOR TYPE 3R ENCLOSURES.
 CUSTOMER IS RESPONSIBLE FOR INSTALLATION TO MEET ALL NATIONAL AND LOCAL ELECTRICAL CODES.

SEE DWG# 26752 FOR SCHEMATIC



1/4 TURN LATCH
2 PLACES.

HASP AND STAPLE
FOR PADLOCKING.



PB-POWER INPUT BLOCK:
WIRE RANGE-#18 TO #4 AWG.
TIGHTENING TORQUE 20 IN-LB.

GROUND LUG:
WIRE RANGE-1/0 TO #14 AWG.
1/0 AWG thru 2 AWG 50 IN-LBS. MAX.
4 AWG thru 6 AWG 45 IN-LBS. MAX.
8 AWG 40 IN-LBS. MAX.
10 AWG thru 14 AWG 35 IN-LBS. MAX.

SYMBOL	TCI PART NUMBER
LR	KDRF1T
TR	KTR5A65HG
CAP. (5 KVAR)	27606
XFMR.	23896
Fu1, 2, 3	15752
Fu4,6	24009
Fu5	17567
CNT	12434

ALTERNATE	TCI PART NUMBER
CAP. (5 KVAR)	KCAP5A6A

UNIT SPECIFICATIONS:					
KVAR	HARMONIC	VOLT	HZ	PHASE	HP
5	5TH	480	60	3	15
ENCLOSURE		UL TYPE 3R			
COLOR		WHITE			
APPROX.WT. LBS.		125			

				TOLERANCES (EXCEPT AS NOTED)		TCI 7878 N. 86th STREET MILWAUKEE, WI 53224	
				DECIMAL		HG15AW03STC, 15HP 480/3/60 UL TYPE 3R	
				.XX ±.12			
				.XXX±.06		SCALE TO FIT APRVD. C	
F	2900	CHG TO ASC CAPS	3/19/13	DSW	SHT.1 OF1		
E	2755	CHG BACK TO VISHAY	6/22/11	DSW			
D	2722	ASC CAP TRIAL	1/21/11	DSW			
NO	REVISION			DATE	BY		