

SEE DWG# 26879 FOR SCHEMATIC

CUSTOMER CONNECTIONS

WIRE RANGE- 250MCM-6

TIGHTENING TORQUE 275 IN-LB.

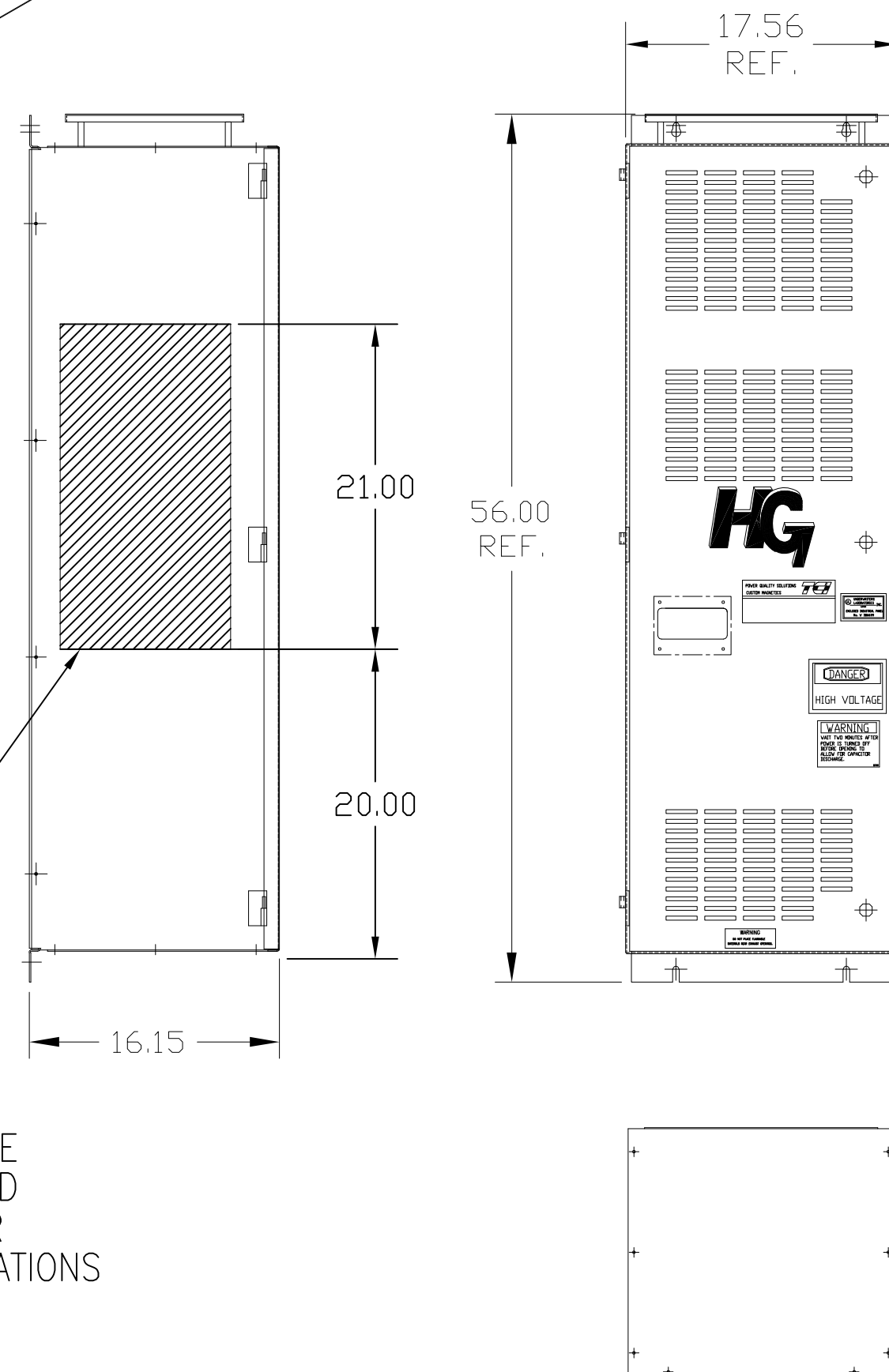
GROUND LUG:

WIRE RANGE- 250MCM-6

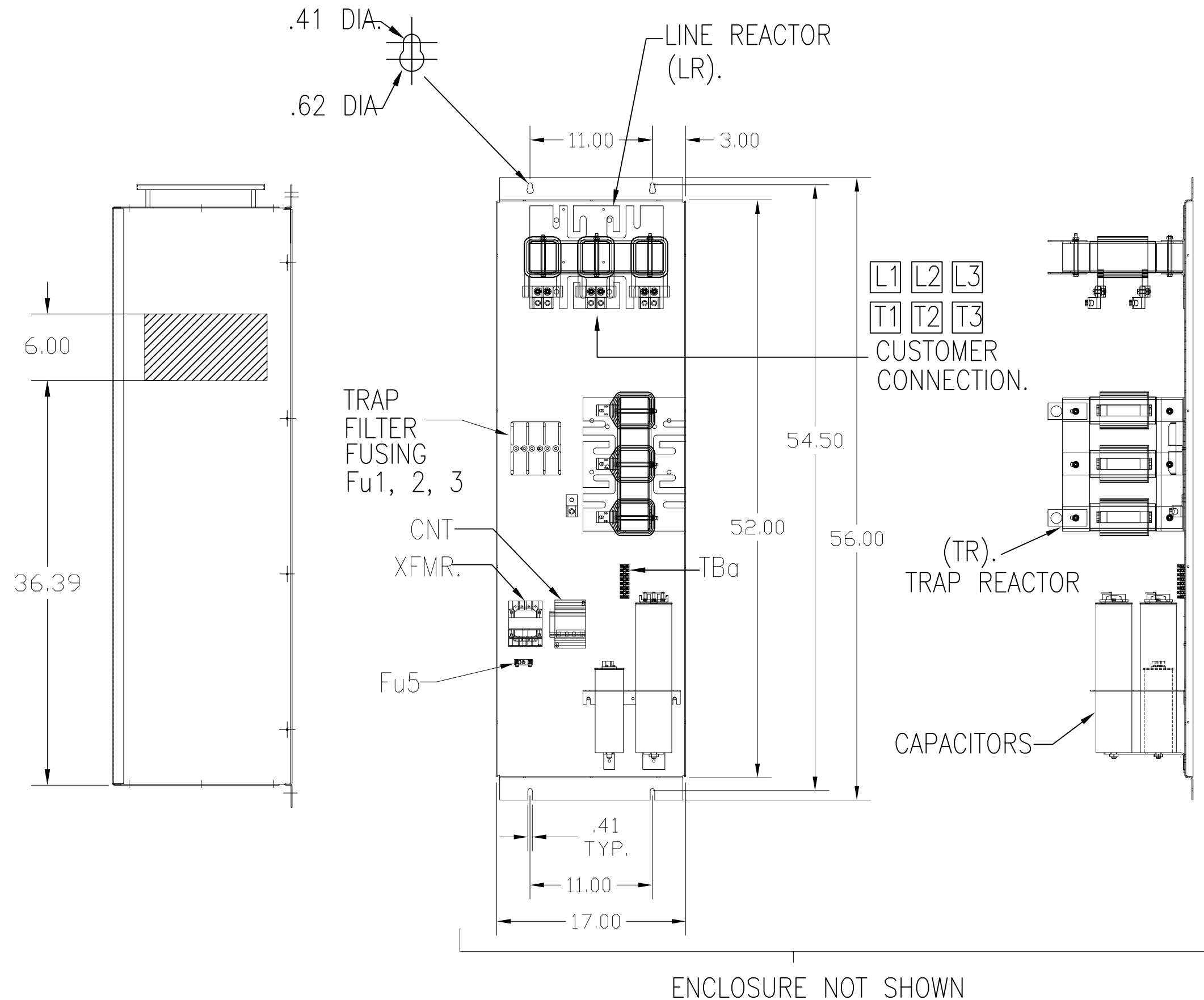
TIGHTENING TORQUE 275 IN-LB.

UNIT SPECIFICATIONS:					
KVAR	HARMONIC	VOLT	HZ	PHASE	HP
45	5TH	600	60	3	150
ENCLOSURE		NEMA 1			
FEATURES		WITH CONTACTOR			
APPROX.WT. LBS.		360			

SYMBOL	TCI PART NUMBER
LR	KDRL42T
TR	KTR45C65HG
CAP1 5.0 KVAR	KCAP5C6A
CAP2, CAP3. 20 KVAR	KCAP20C6B
Fu1a;2a;3a	15740
Fu4,6	24126
Fu5	13364
CNT	22980



HATCHED AREAS ARE SUGGESTED CUSTOMER WIRE LOCATIONS



CUSTOMER IS RESPONSIBLE FOR INSTALLATION TO MEET ALL NATIONAL AND LOCAL ELECTRICAL CODES.

TOLERANCES (EXCEPT AS NOTED)				TCI® W132 N10611 Grant Drive Germanstown, WI 53022	
			DECIMAL	HG150CW01STC, 150HP 600/3/60, ENCL, WITH CNT	
			.XX ± .03		
			.XXX ± .01		
			FRACTIONAL	DRN. BY DSW DATE 3/18/09 DVG. NO. 103556DG	
			± 1/32		
A	RMVD.SHIELD	10/17/11	RJC	SCALE TO FIT	APRV. C
NO	REVISION	DATE	BY	SHT.1 OF1	