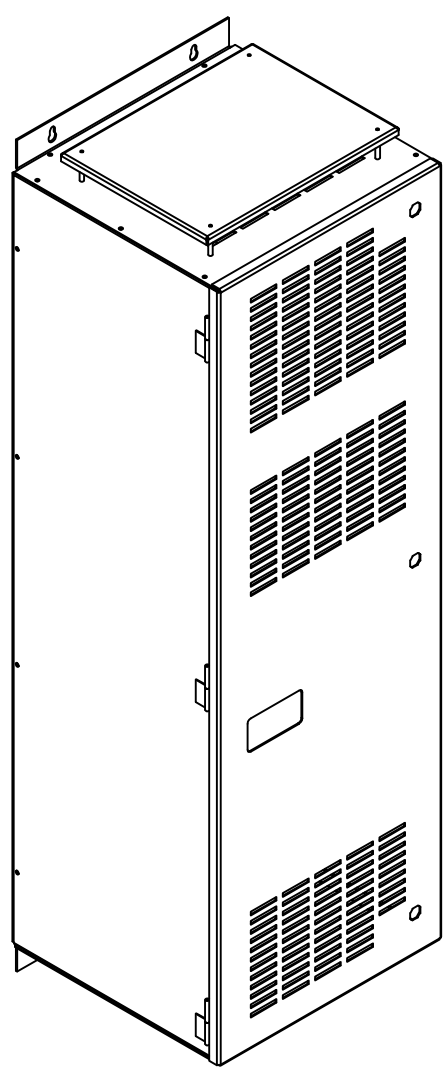
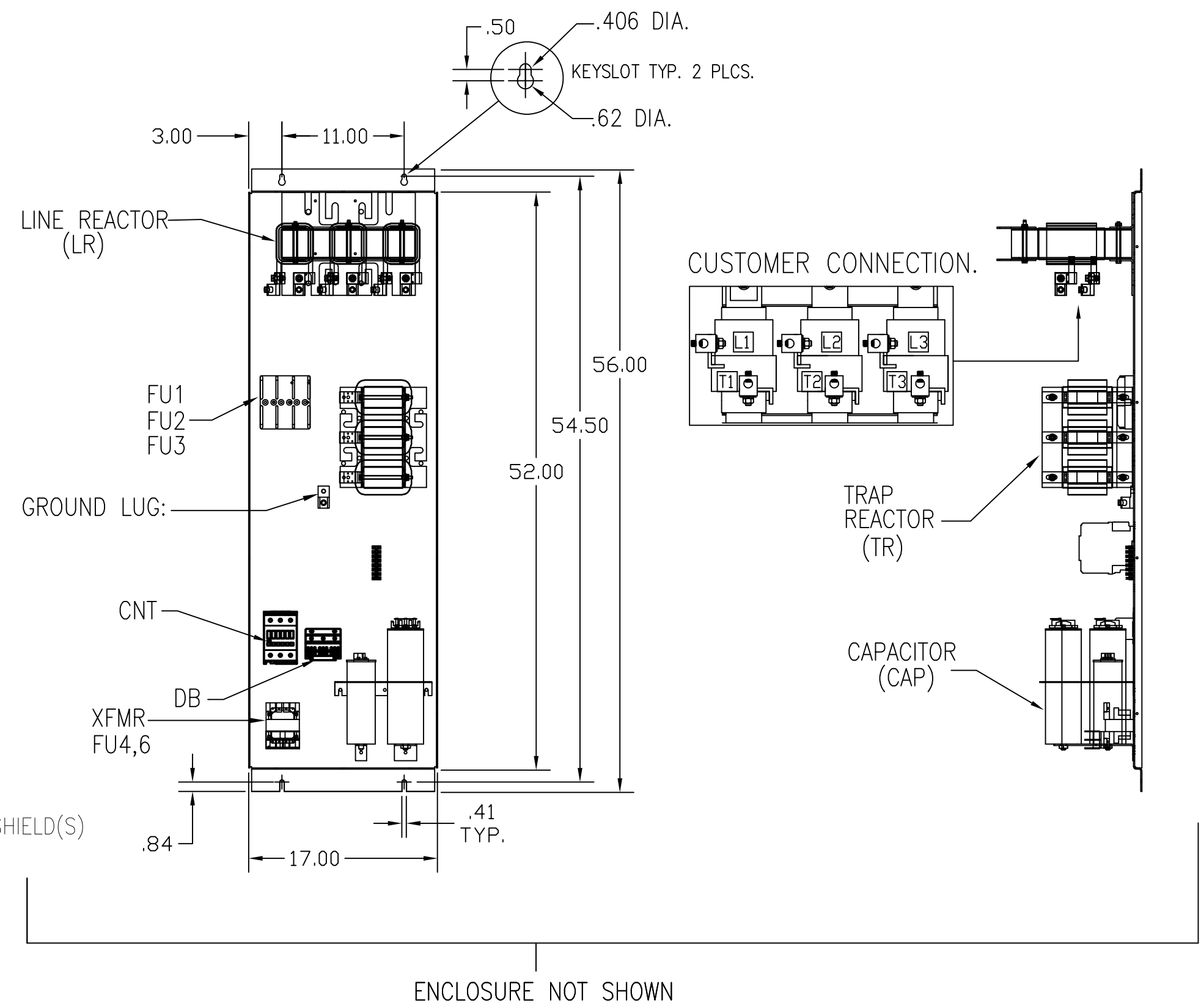
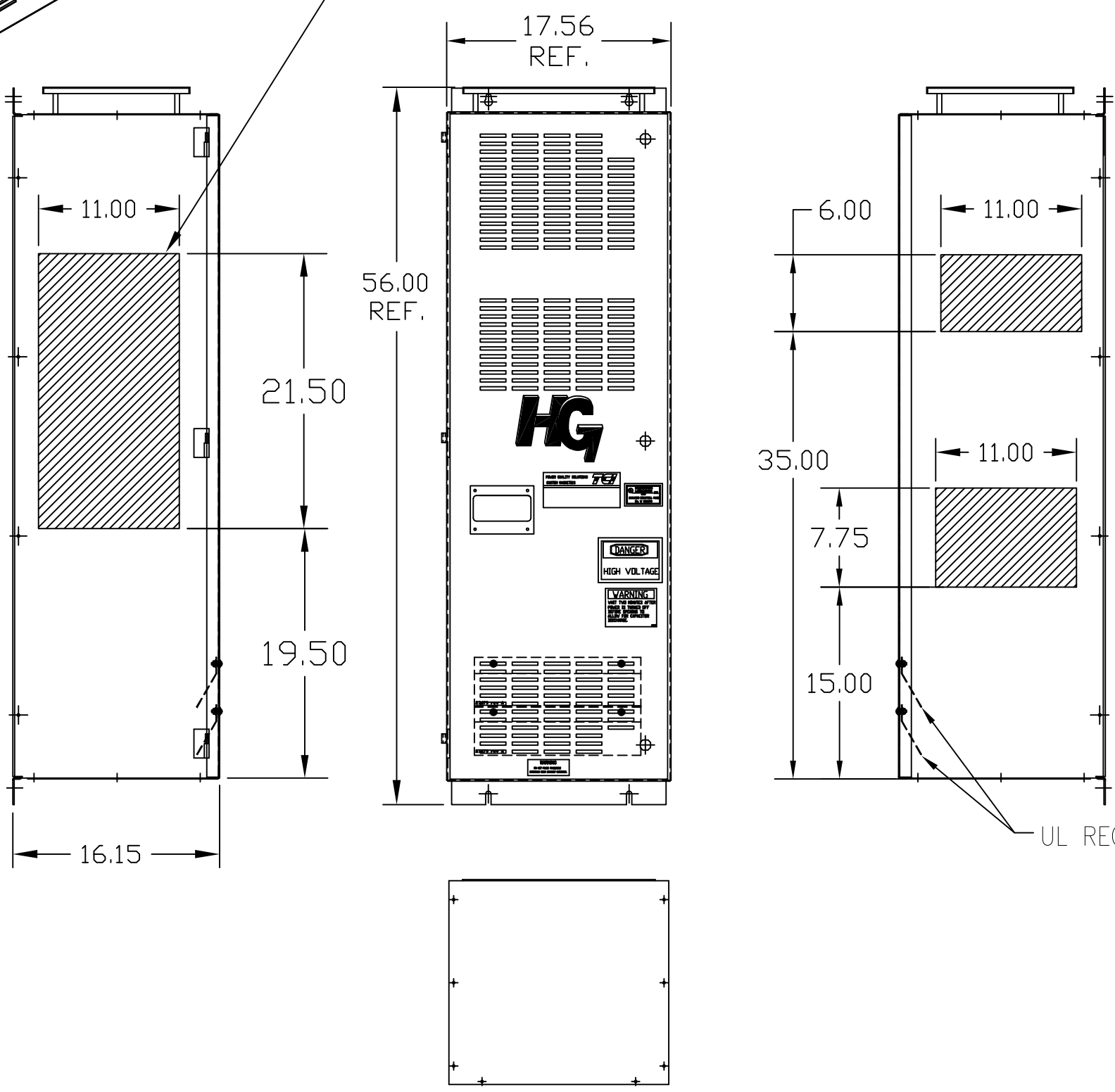


UNIT SPECIFICATIONS:					
KVAR	HARMONIC	VOLT	HZ	PHASE	HP
45	5TH	480	60	3	150
ENCLOSURE		NEMA 1			
APPROX.WT. LBS.		360			



HATCHED AREAS ARE SUGGESTED CUSTOMER WIRE ENTRANCE AND EXIT LOCATIONS (BOTTOM ENTRANCE ALTERNATE-CONSULT TCI)




ENCLOSURE NOT SHOWN

GROUND LUG:
WIRE RANGE- 250MCM-6
TIGHTENING TORQUE 275 IN-LB.

CUSTOMER CONNECTIONS
WIRE RANGE- 250MCM-6
TIGHTENING TORQUE 275 IN-LB.

SEE DWG# 26690 FOR SCHEMATIC
CUSTOMER IS RESPONSIBLE FOR INSTALLATION
TO MEET ALL NATIONAL AND LOCAL ELECTRICAL CODES.

TOLERANCES (EXCEPT AS NOTED)				 W132 N10611 GRANT DRIVE GERMANTOWN, WI. 53022
DECIMAL				
D	3267 CNT CHANGE	1/20/16	BWM	.XX ± .03
C	2900 CHG TO ASC CAPS	3/14/13	DSW	.XXX ± .01
B	2702 RVSD UL SHIELD	12/28/10	RJC	FRACTIONAL ± 1/32
A	RVSD WIRE CHART	12/22/08	RJC	ANGULAR ± 1/2°
NO	REVISION	DATE	BY	

DRN BY	DSW	DATE	7/21/08	DWG. NO.	103512DG
SCALE	TO SCALE	APRV.D.			SHT.1 OF1