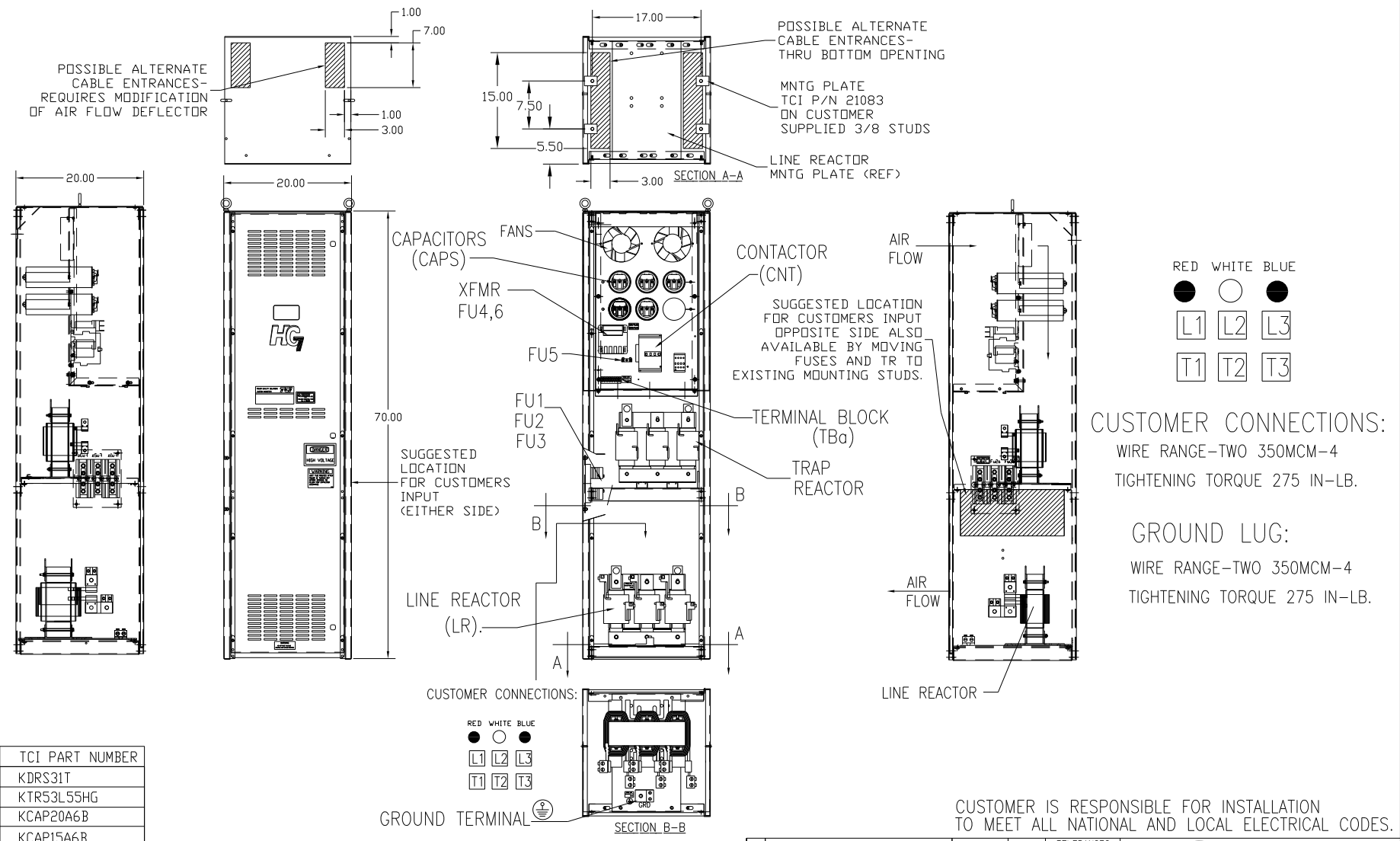


UNIT SPECIFICATIONS:					
KW	HARMONIC	VOLT	HZ	PHASE	FLA
132	5TH	400	50	3	250
ENCLOSURE		NEMA 1			
APPROX.WT. LBS.		480			



SYMBOL	TCI PART NUMBER
LR	KDRS31T
TR	KTR53L55HG
CAP1,2,3,4 (20 KVAR)	KCAP20A6B
CAP5 (15 KVAR)	KCAP15A6B
XFMR.	24393
Fu1, 2, 3	11170
Fu4,6	24073
Fu5	24012
CNT1	19245
CNT2	12434

SEE DRAWING# 27703-1 FOR SCHEMATIC

CUSTOMER IS RESPONSIBLE FOR INSTALLATION TO MEET ALL NATIONAL AND LOCAL ELECTRICAL CODES.

				TOLERANCES (EXCEPT AS NOTED)		7878 N. 86th STREET MILWAUKEE, WI 53224	
				DECIMAL		HG132LW01STC, 132KW 400/3/50, ENCLOSED, W/CNT	
				XX ± .03		DRW. BY DSW DATE 11/12/2010 DWG. NO. 104538DG	
				XXX ± .01		SCALE TO FIT	
				FRACTIONAL ± 1/32		APRVD C	
A AS BUILT		11/04/10		DSW		SHT. 1 OF 1	
NO REVISION		DATE		BY			
				ANGULAR ± 1/2°			