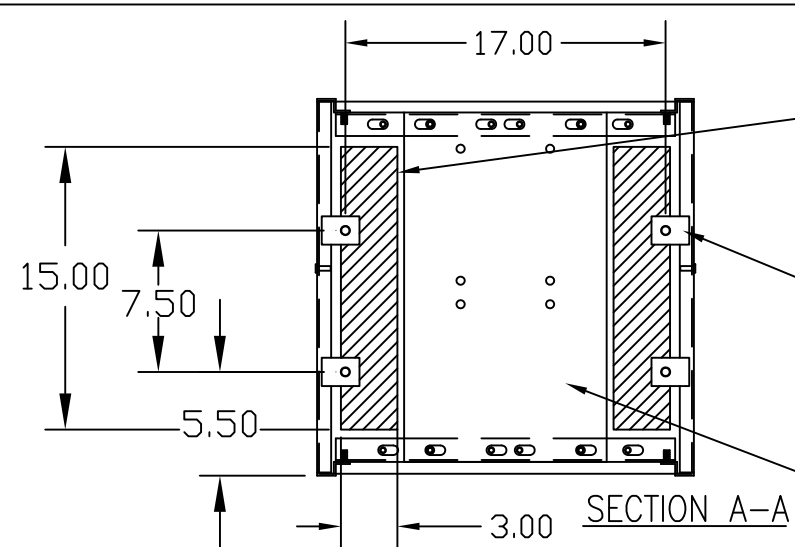
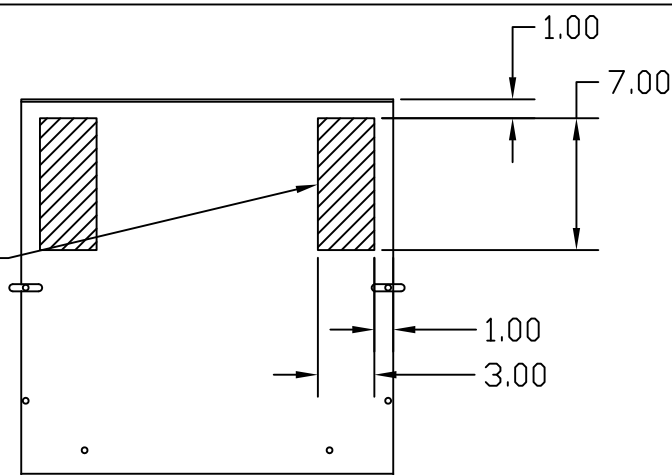


POSSIBLE ALTERNATE CABLE ENTRANCES-REQUIRES MODIFICATION OF AIR FLOW DEFLECTOR

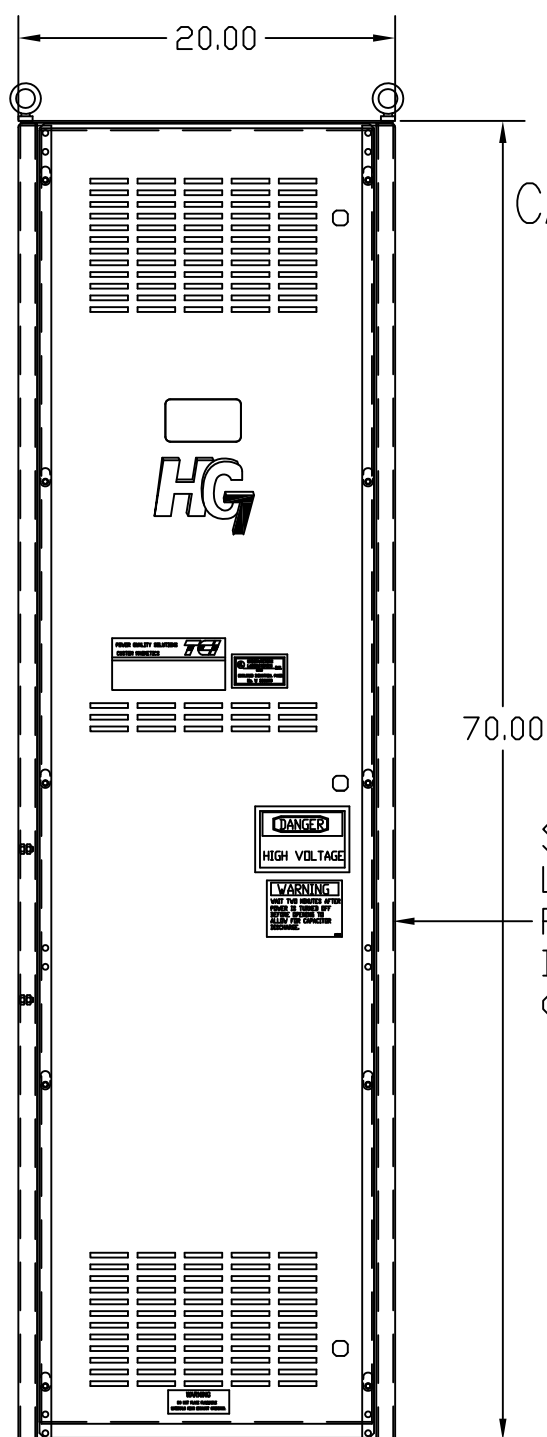
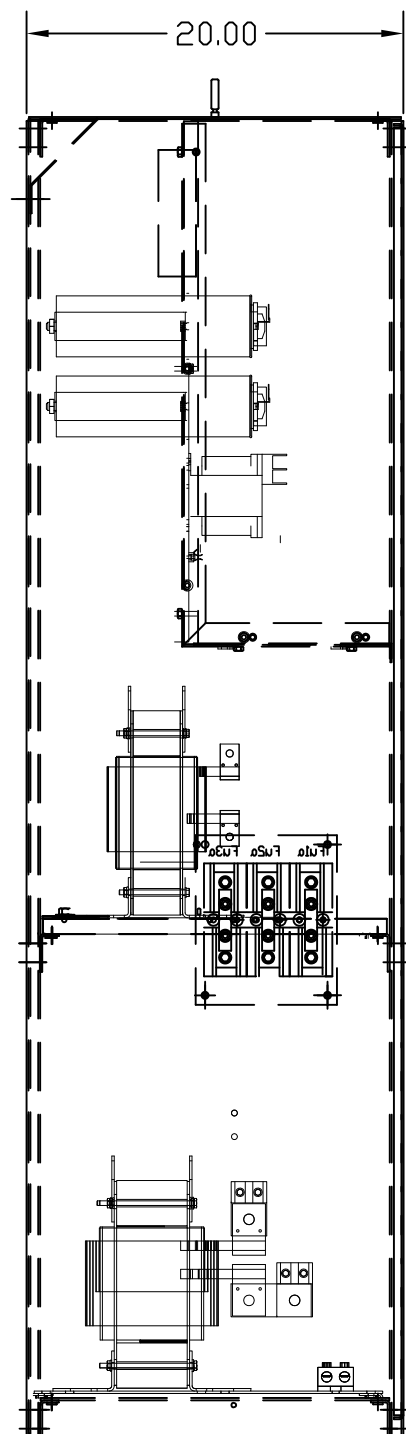


POSSIBLE ALTERNATE CABLE ENTRANCES-THRU BOTTOM OPENING

MNTG PLATE TCI P/N 21083 ON CUSTOMER SUPPLIED 3/8 STUDS

LINE REACTOR MNTG PLATE (REF)

UNIT SPECIFICATIONS:					
KW	HARMONIC	VOLT	HZ	PHASE	FLA
132	5TH	400	50	3	250
ENCLOSURE		NEMA 1			
APPROX.WT. LBS.		475			



CAPACITORS (CAPS)

FANS

XFMR FU4,6

FU5

FU1

FU2

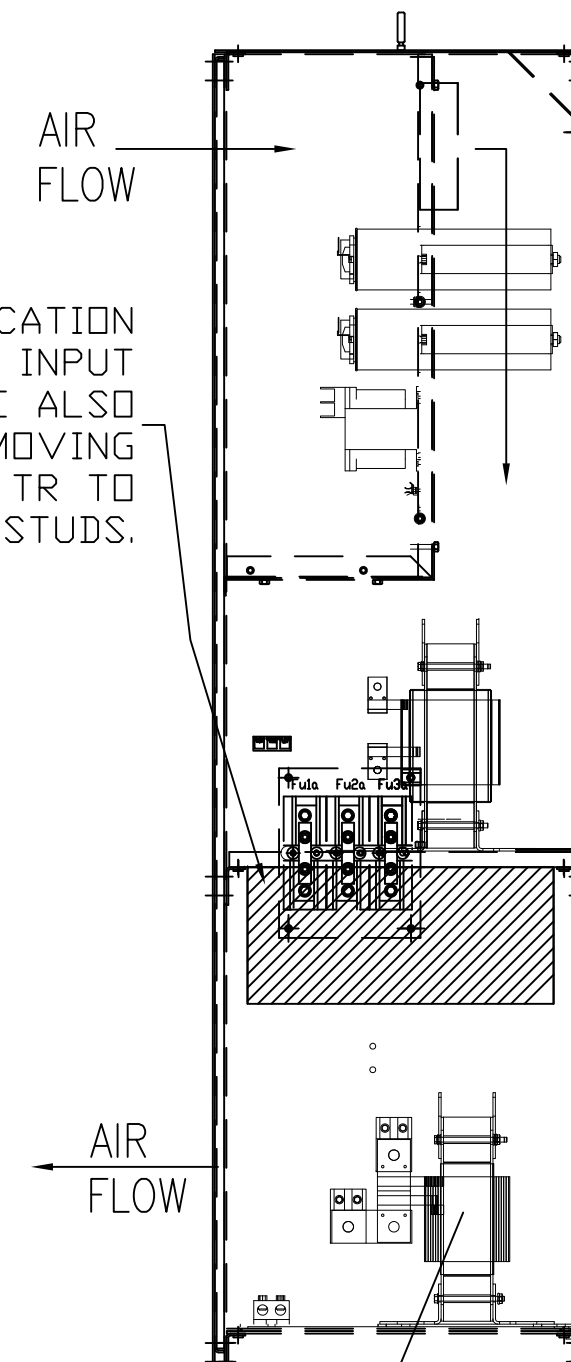
FU3

SUGGESTED LOCATION FOR CUSTOMERS INPUT (EITHER SIDE)

LINE REACTOR (LR)

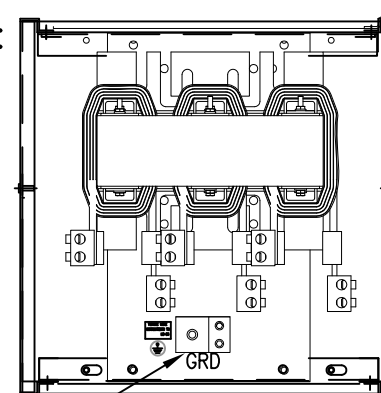
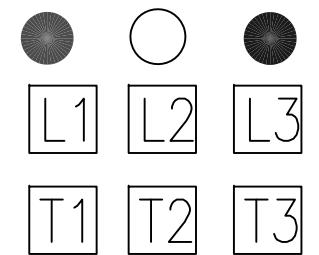
SUGGESTED LOCATION FOR CUSTOMERS INPUT OPPOSITE SIDE ALSO AVAILABLE BY MOVING FUSES AND TR TO EXISTING MOUNTING STUDS.

TRAP REACTOR



CUSTOMER CONNECTIONS:

RED WHITE BLUE

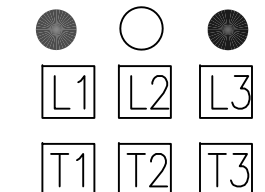


GROUND TERMINAL

AIR FLOW

LINE REACTOR

RED WHITE BLUE



CUSTOMER CONNECTIONS:

WIRE RANGE-TWO 350MCM-4
TIGHTENING TORQUE 275 IN-LB.

GROUND LUG:

WIRE RANGE-TWO 350MCM-4
TIGHTENING TORQUE 275 IN-LB.

SYMBOL	TCI PART NUMBER
LR	KDRS31T
TR	KTR53L55HG
CAP1,2,3,4 (20 KVAR)	KCAP20A6B
CAP5 (15 KVAR)	KCAP15A6B
XFMR.	24393
Fu1, 2, 3	11170
Fu4,6	24073
Fu5	24012

SEE DRAWING# 27709-1 FOR SCHEMATIC

CUSTOMER IS RESPONSIBLE FOR INSTALLATION TO MEET ALL NATIONAL AND LOCAL ELECTRICAL CODES.

TCI, LLC CLAIMS PROPRIETARY RIGHTS IN THE MATERIAL HEREIN DISCLOSED. IT IS SUPPLIED WITHOUT PREJUDICE TO ANY PATENT RIGHTS OF TCI AND MAY NOT BE REPRODUCED OR USED TO MANUFACTURE ANYTHING SHOWN THEREIN WITHOUT WRITTEN PERMISSION FROM TCI.

NO	REVISION	DATE	BY	TOLERANCES (EXCEPT AS NOTED): DECIMAL FRACTIONAL ANGULAR
AS BUILT		10/04/10	DSW	.XX ±.03 .XXX ±.01 ± 1/32 ± 1/2°

TCI® W132 N10611 Grant Drive
Germantown, WI 53022

HG132LW01ST, 132KW
400/3/50, ENCLOSED

DRN. BY DSW DATE 11/17/2010 DWG. NO. 104516DG
SCALE TO FIT SIZE C SHT.1 OF 1