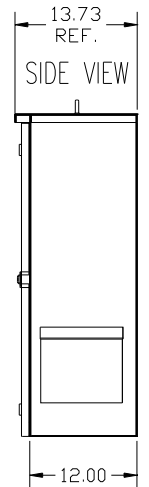
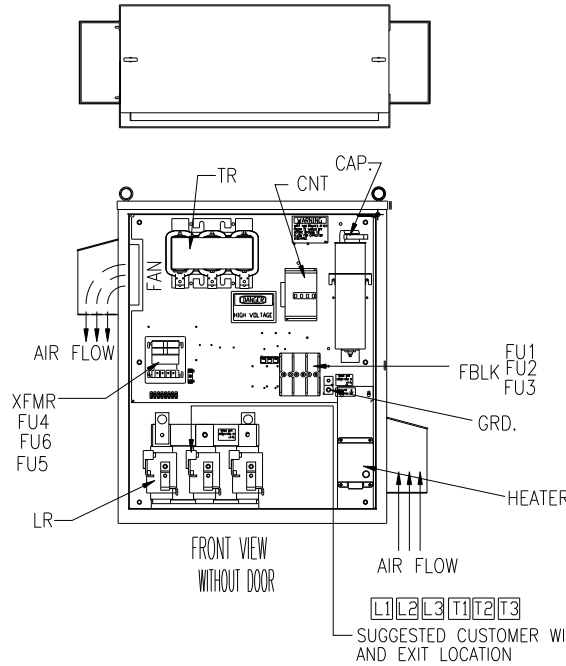
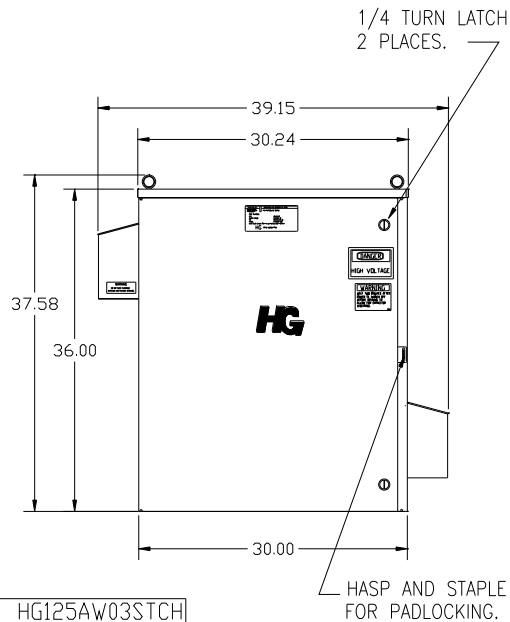
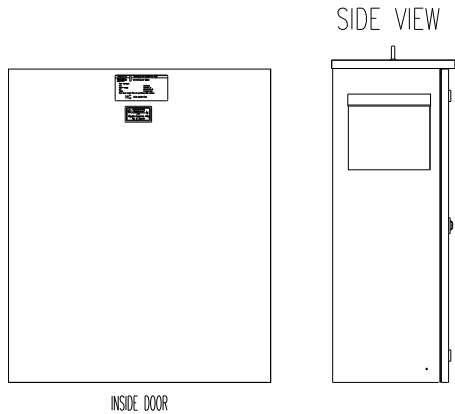
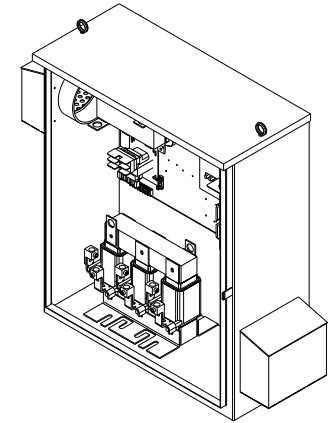
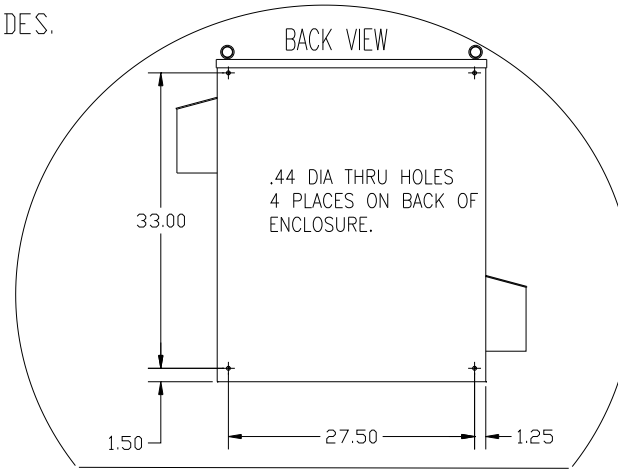
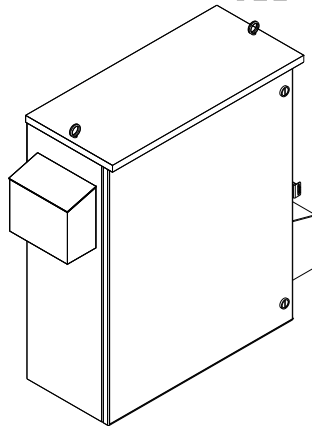


CUSTOMER IS RESPONSIBLE FOR INSTALLATION TO MEET ALL NATIONAL AND LOCAL ELECTRICAL CODES.

NOTE: USE ONLY HUBS OR FITTINGS THAT COMPLY WITH UL514B FOR TYPE 3R ENCLOSURES.

SEE DWG# 26751 FOR SCHEMATIC



| UNIT SPECIFICATIONS: | | | | | |
|----------------------|------|------------|-------|----|-----|
| KVAR HARMONIC | VOLT | HZ | PHASE | HP | |
| 40 | 5TH | 480 | 60 | 3 | 125 |
| ENCLOSURE | | UL TYPE 3R | | | |
| COLOR | | WHITE | | | |
| APPROX.WT. LBS. | | 295 | | | |

| HG125AW03STCH | |
|--------------------------|---|
| COMPONENTS | |
| LINE REACTOR LR | X |
| TRAP REACTOR TR | X |
| CAPACITOR CAP | X |
| TRAP FUSING FU1,2,3 | X |
| TRANSFORMER XFMR | X |
| TRANSFORMER FUSING FU4,6 | X |
| TRANSFORMER FUSING FU5 | X |
| CONTACTOR CNT | X |
| HEATER | X |

GROUND LUG:
WIRE RANGE- 250MCM-6
TIGHTENING TORQUE 275 IN.-LB.

CUSTOMER CONNECTIONS
WIRE RANGE- 250MCM-6
TIGHTENING TORQUE 275 IN.-LB.

| TOLERANCES (EXCEPT AS NOTED) | | | |
|------------------------------|--|--|-------------------|
| DECIMAL | | | |
| | | | .XX ± .12 |
| | | | .XXX ± .06 |
| | | | FRACTIONAL ± 1/32 |
| | | | ANGULAR ± 1/2° |

| | | | |
|---------|----------|----------|---|
| DRN. BY | DATE | DWG. NO. | 7878 N. 86th STREET MILWAUKEE, WI 53224 HG125AW03STCH, 125HP 480/3/60 UL TYPE 3R |
| DSW | 8/21/08 | 103731DG | |
| NO. | REVISION | DATE | BY |
| | | | |