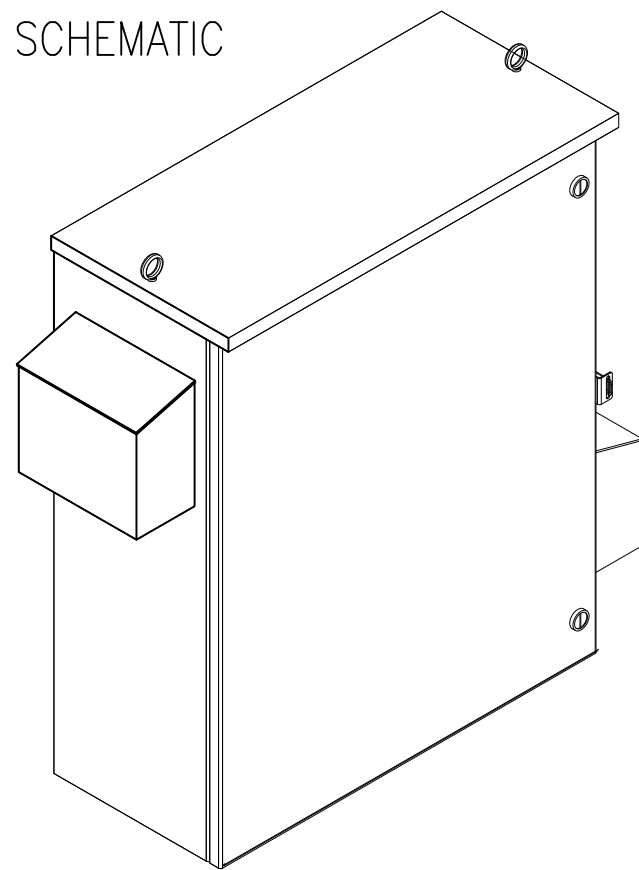


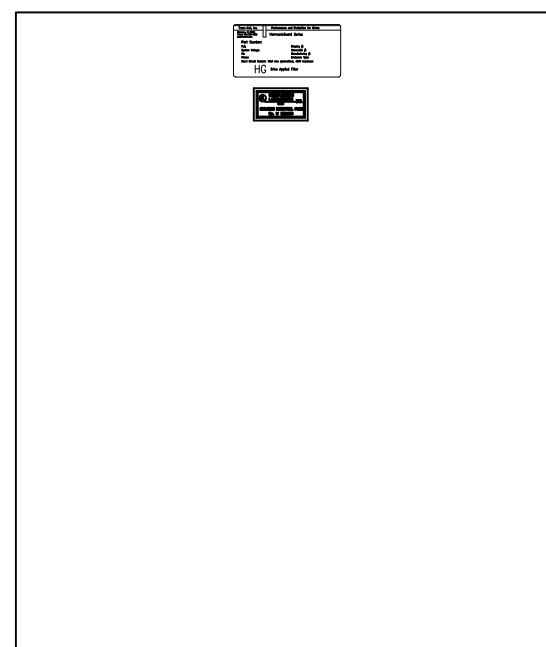
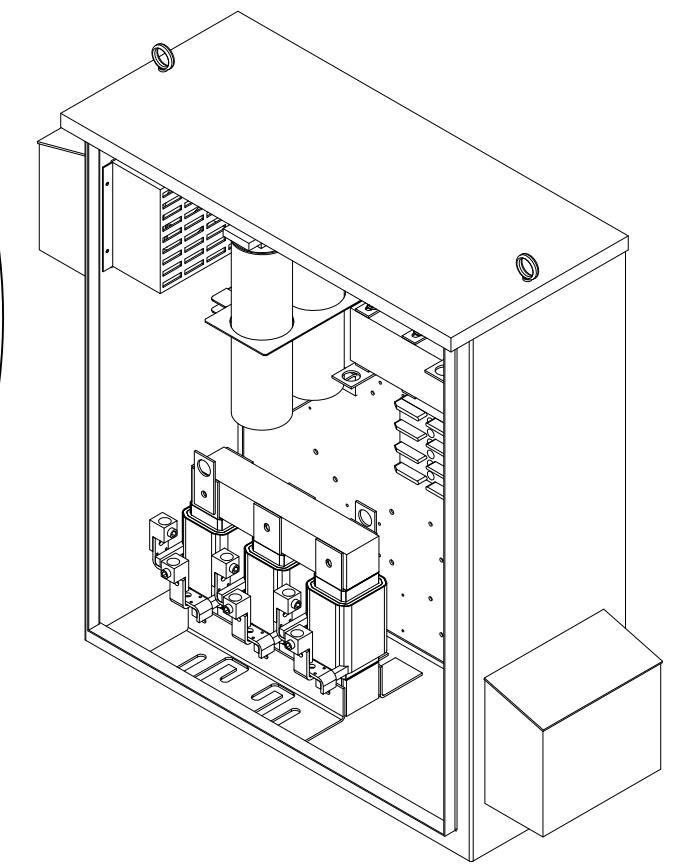
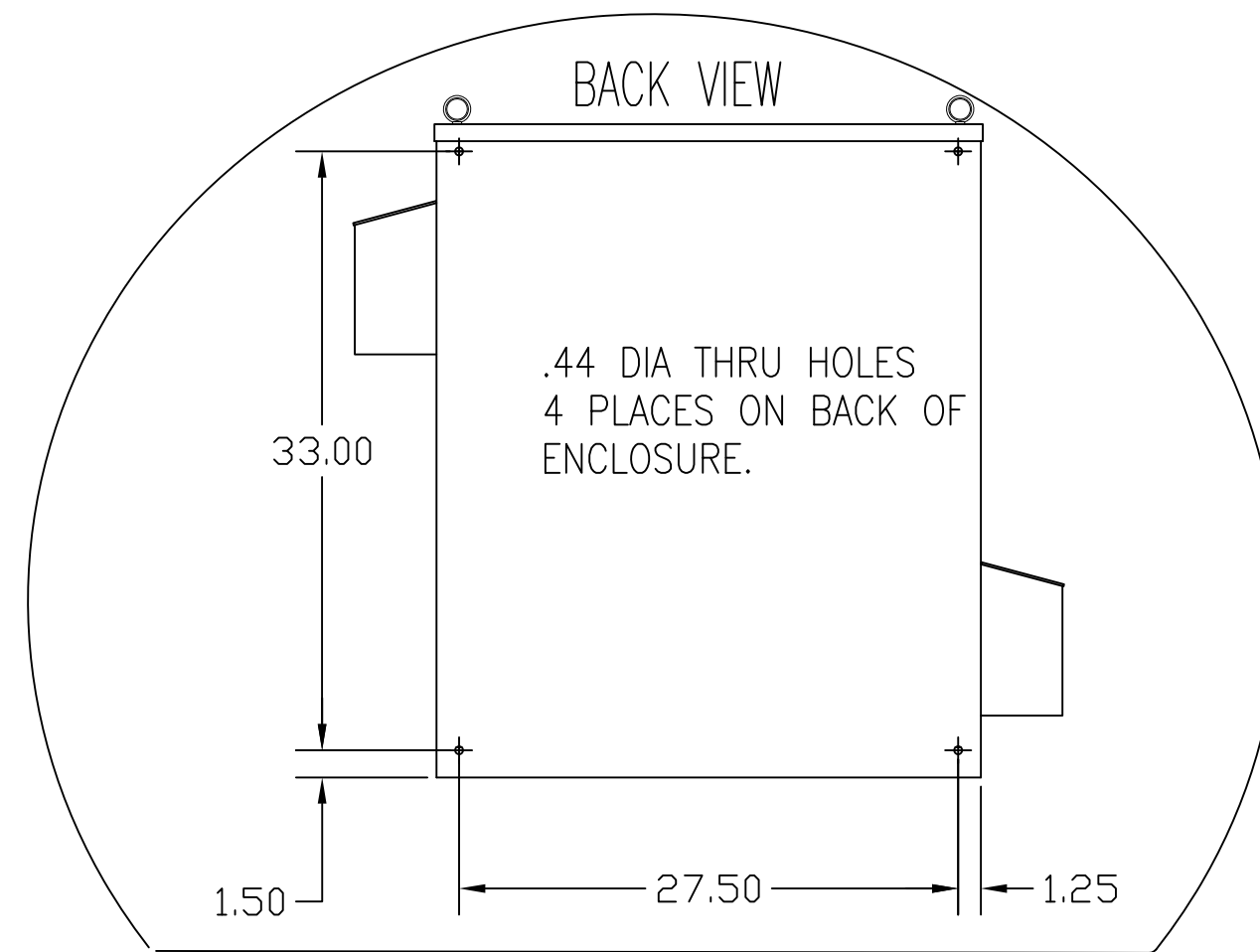
CUSTOMER IS RESPONSIBLE FOR INSTALLATION TO MEET ALL NATIONAL AND LOCAL ELECTRICAL CODES.

NOTE: USE ONLY HUBS OR FITTINGS THAT COMPLY WITH UL514B FOR TYPE 3R ENCLOSURES.

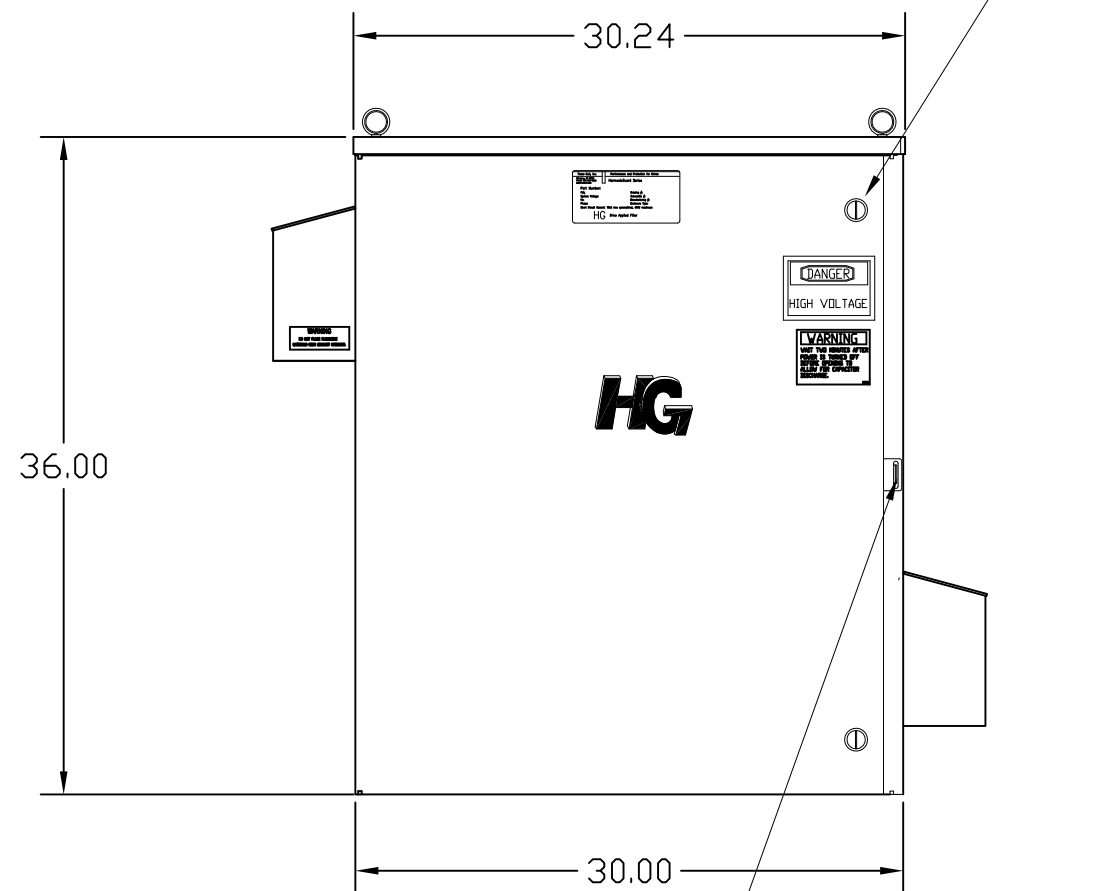
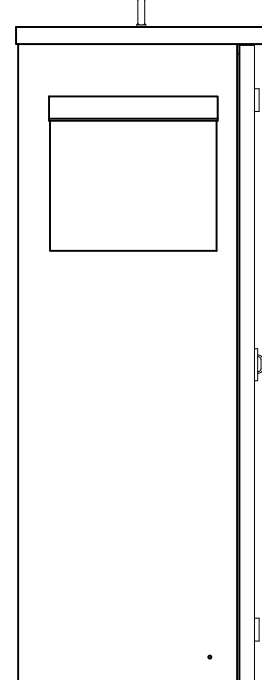
SEE DWG# 26757 FOR SCHEMATIC



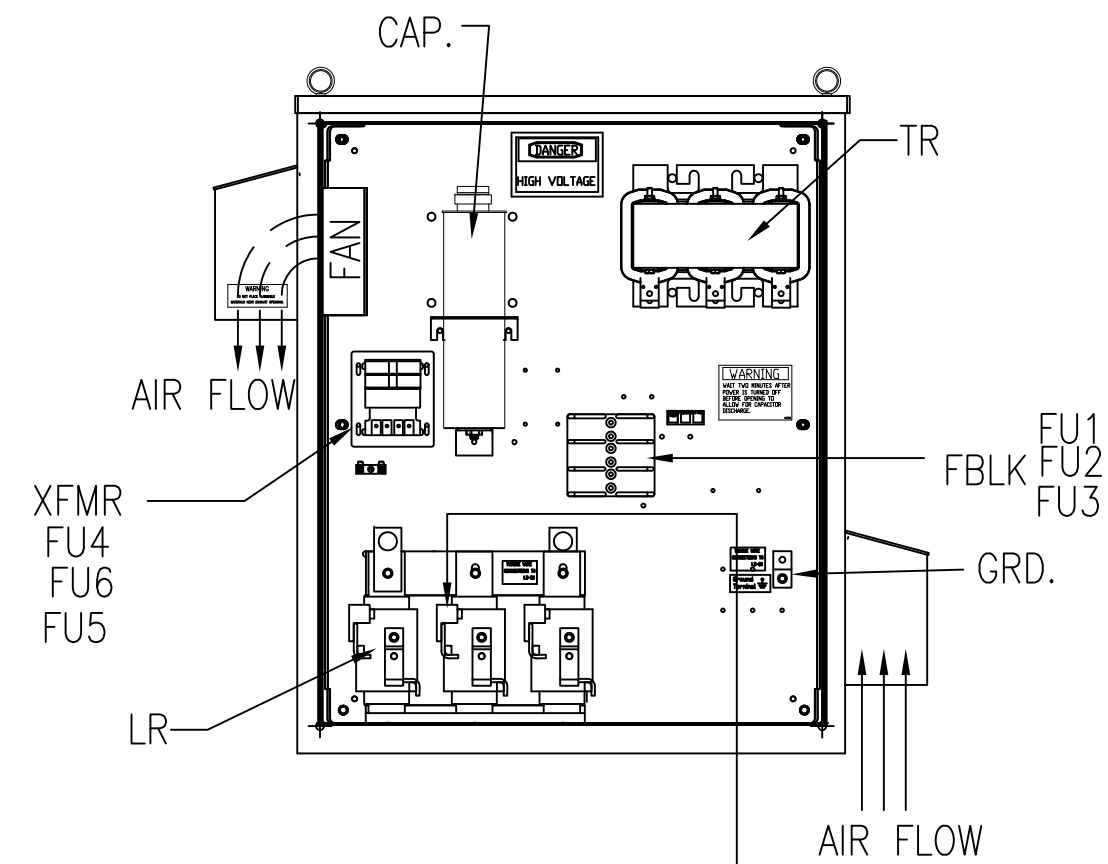
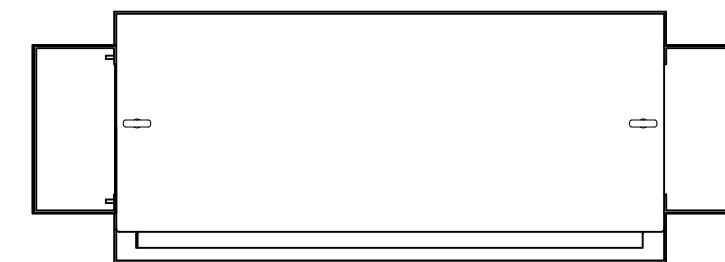
SIDE VIEW



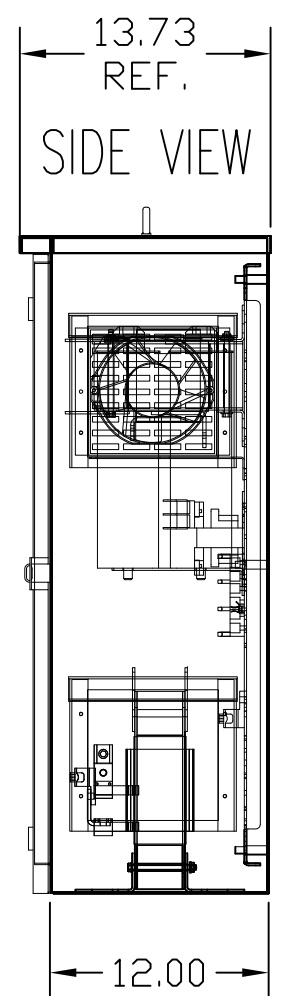
INSIDE DOOR



HASP AND STAPLE FOR PADLOCKING.



FRONT VIEW WITHOUT DOOR



SIDE VIEW

UNIT SPECIFICATIONS:					
KVAR	HARMONIC	VOLT	HZ	PHASE	HP
40	5TH	480	60	3	125
ENCLOSURE		UL TYPE 3R			
COLOR		WHITE			
APPROX.WT. LBS.		289			

SYMBOL	TCI PART NUMBER
LR	KDRL1T
TR	KTR40A65HG
CAP (20 KVAR)	27609
XFMR.	23896
Fu1, 2, 3	15740
Fu4,6	24009
Fu5	17567
ALTERNATE	TCI PART NUMBER
CAP (20 KVAR)	KCAP20A6B

GROUND LUG:  
WIRE RANGE- 250MCM-6  
TIGHTENING TORQUE 275 IN-LB.

CUSTOMER CONNECTIONS  
WIRE RANGE- 250MCM-6  
TIGHTENING TORQUE 275 IN-LB.

TCI, LLC CLAIMS PROPRIETARY RIGHTS IN THE MATERIAL HEREIN DISCLOSED. IT IS SUPPLIED WITHOUT PREJUDICE TO ANY PATENT RIGHTS OF TCI AND MAY NOT BE REPRODUCED OR USED TO MANUFACTURE ANYTHING SHOWN THEREIN WITHOUT WRITTEN PERMISSION FROM TCI.

NO	REVISION	DATE	BY
B	2900 CHG TO ASC CAPS	3/6/13	DSW
A	2641 ADD EYEBOLTS	10/13/09	DSW

TOLERANCES (EXCEPT AS NOTED)  
DECIMAL  
.XX ±.12  
.XXX±.06  
FRACTIONAL  
± 1/32  
ANGULAR  
± 1/2°

**TCI**® W132 N10611 Grant Drive  
Germantown, WI 53022

HG125AW03ST, 125HP  
480/3/60 UL TYPE 3R

DRN BY DSW DATE 8/21/08 DWG. NO. 103621DG  
SCALE TO FIT SIZE C SHT. 1 OF 1