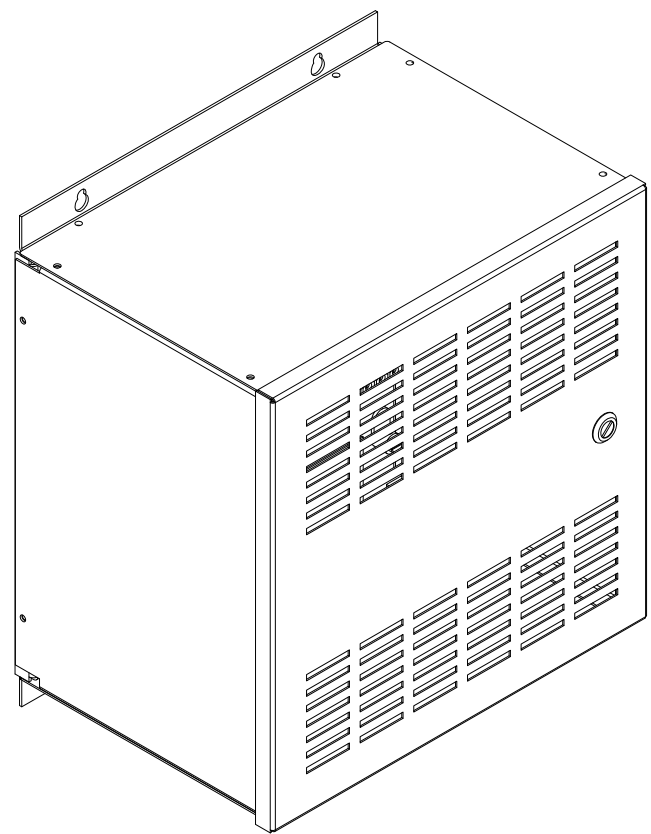


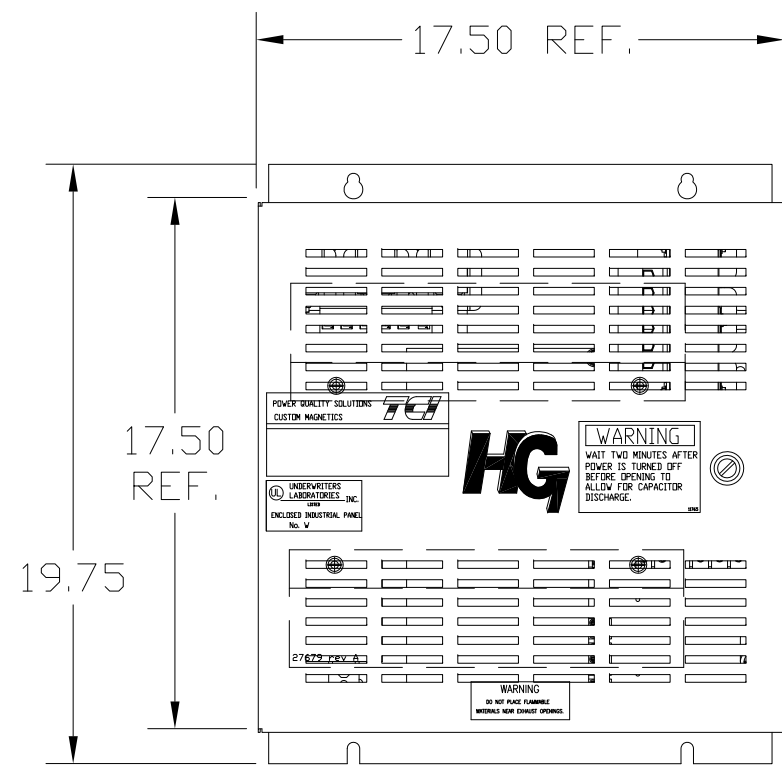
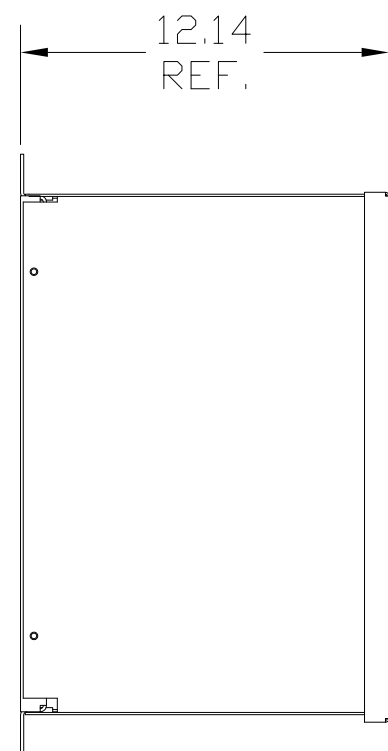
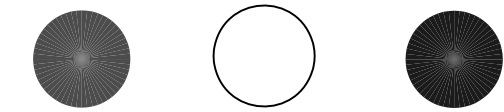
UNIT SPECIFICATIONS:					
KW	HARMONIC	VOLT	HZ	PHASE	FLA
11	5TH	400	50	3	24
ENCLOSURE		NEMA 1			
APPROX. WT. LBS.		79			



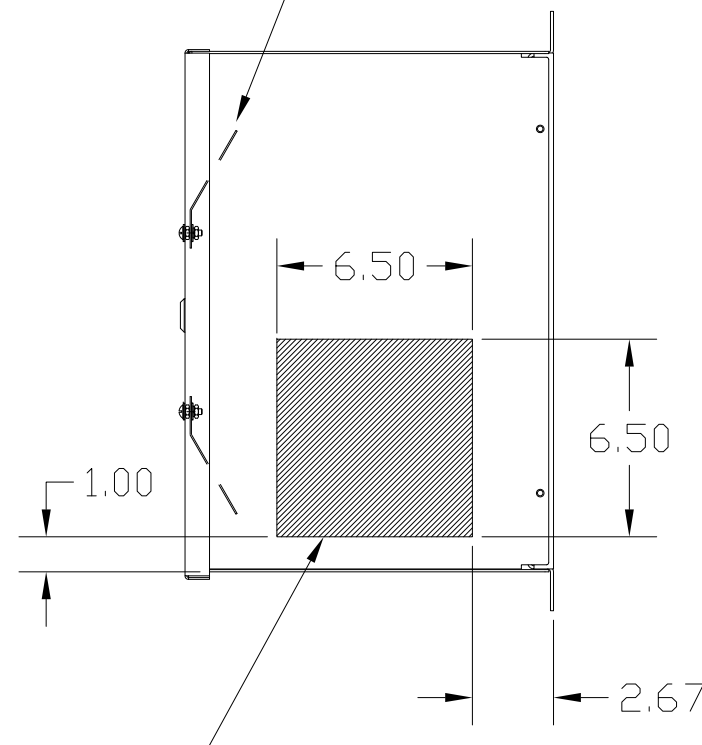
SYMBOL	TCI PART NUMBER
LR	KDRF31T
TR	KTR4L55HG
CAP, 1.. (3 KVAR)	KCAP3A6A
CAP, 2.. (5 KVAR)	KCAP5A6A
Fu1, 2, 3	22924

SEE DWG# 27709 FOR SCHEMATIC

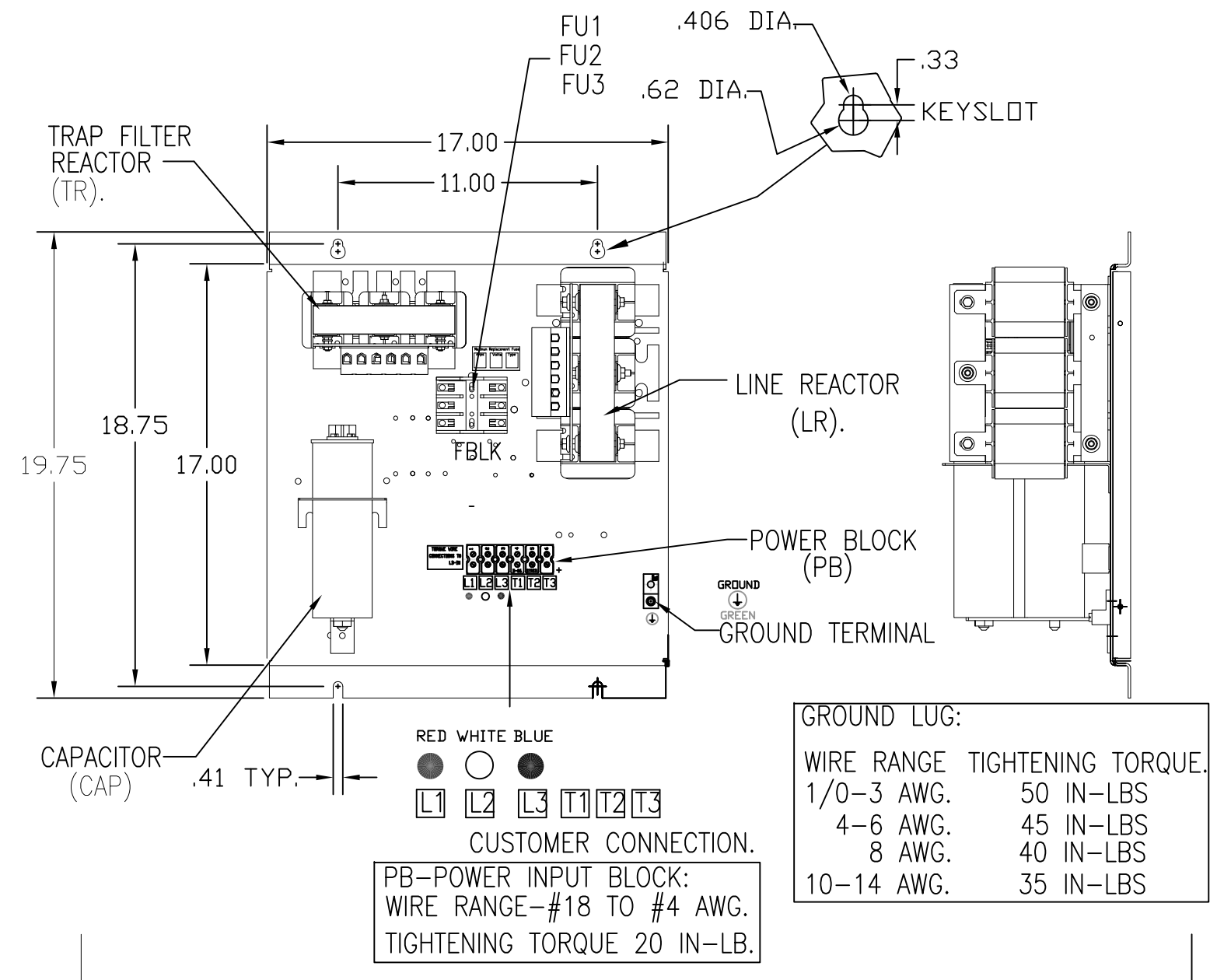
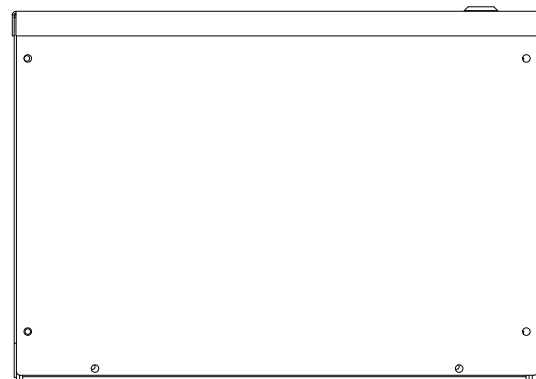
L1 L2 L3  
RED WHITE BLUE



UL DOOR  
MTD. SHIELD  
2 PLACES.



HATCHED AREAS ARE SUGGESTED  
CUSTOMER WIRE AND EXIT LOCATIONS  
(BOTTOM ENTRANCE ALTERNATE-CONSULT TCI)



GROUND LUG:	
WIRE RANGE	TIGHTENING TORQUE.
1/0-3 AWG.	50 IN-LBS
4-6 AWG.	45 IN-LBS
8 AWG.	40 IN-LBS
10-14 AWG.	35 IN-LBS

PB-POWER INPUT BLOCK:  
WIRE RANGE-#18 TO #4 AWG.  
TIGHTENING TORQUE 20 IN-LB.

CUSTOMER IS RESPONSIBLE FOR INSTALLATION  
TO MEET ALL NATIONAL AND LOCAL ELECTRICAL CODES.

TCI, LLC CLAIMS PROPRIETARY RIGHTS IN THE MATERIAL HEREIN DISCLOSED. IT IS SUPPLIED WITHOUT PREJUDICE TO ANY PATENT RIGHTS OF TCI AND MAY NOT BE REPRODUCED OR USED TO MANUFACTURE ANYTHING SHOWN THEREIN WITHOUT WRITTEN PERMISSION FROM TCI.				TOLERANCES (EXCEPT AS NOTED):	W132 N10611 Grant Drive Germantown, WI 53022  <b>HG11LW01ST, 11 kW</b> <b>400/3/50, ENCLOSED</b>
				DECIMAL	
				FRACTIONAL	
				ANGULAR	
AS BUILT	5/12/11	DSW		SCALE TO FIT	DRN. BY DSW DATE 5/12/11 DWG. NO. 104656DG
NO REVISION	DATE	BY	± 1/2°	SIZE C	SHT. 1 OF 1