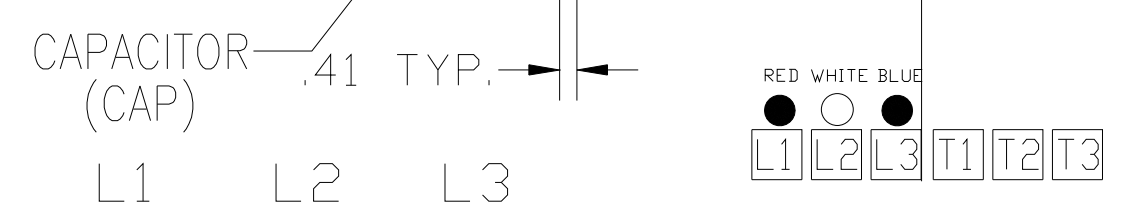
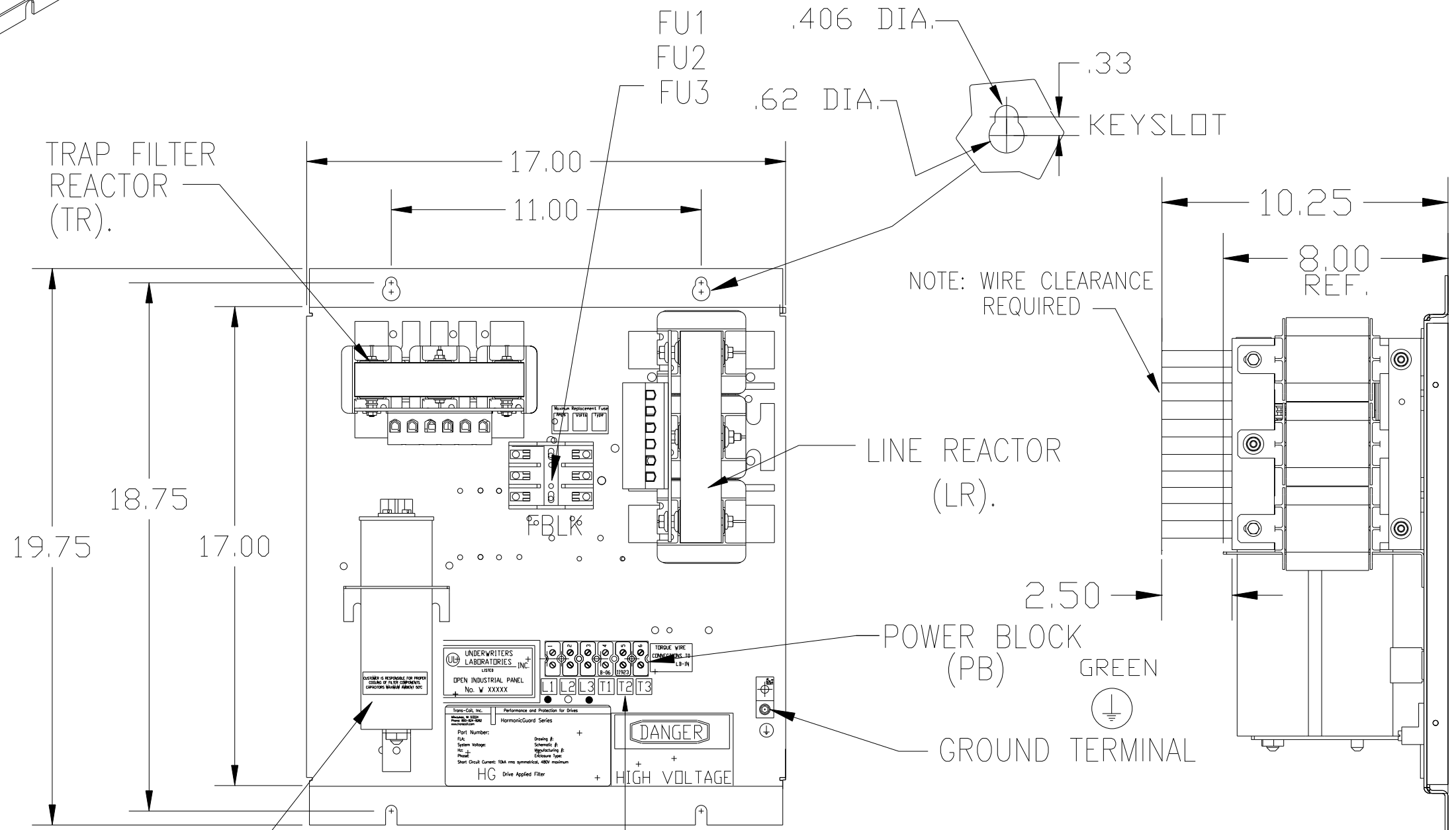
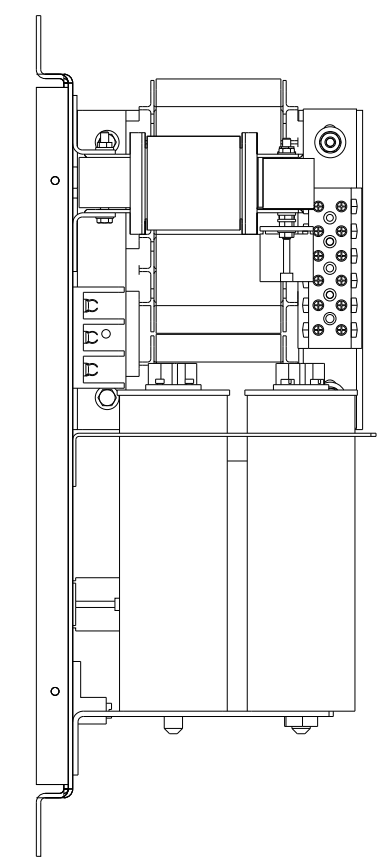
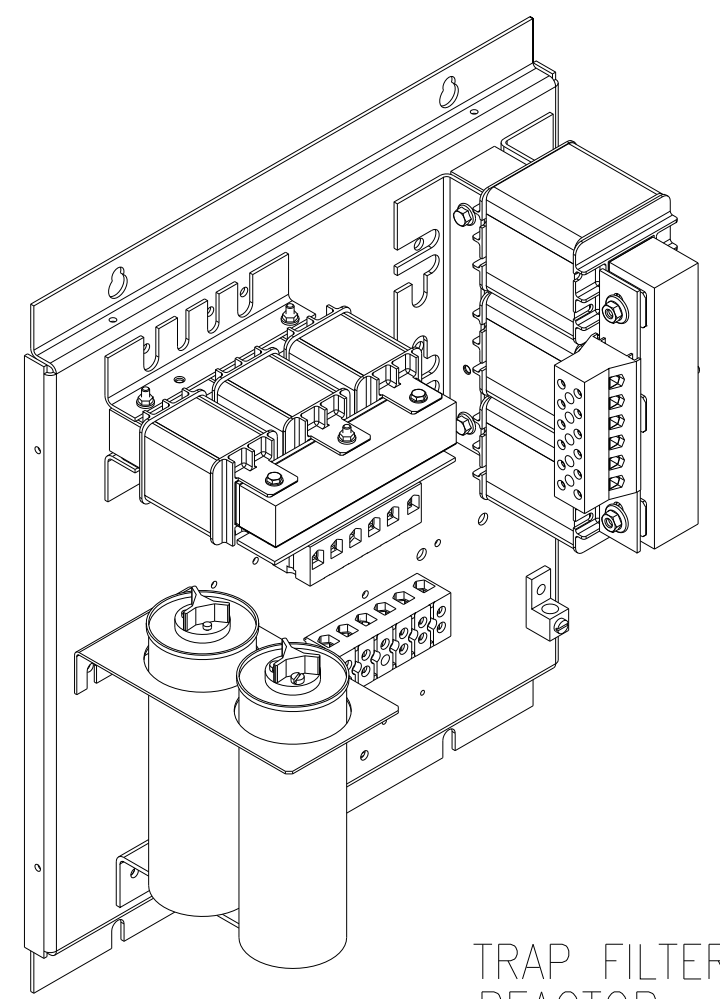


| UNIT SPECIFICATIONS: | | | | | |
|----------------------|----------|------------------|----|-------|-----|
| KW | HARMONIC | VOLT | HZ | PHASE | FLA |
| 11 | 5TH | 400 | 50 | 3 | 24 |
| ENCLOSURE | | WHITE OPEN PANEL | | | |
| APPROX.WT. LBS. | | 53 | | | |

| SYMBOL | TCI PART NUMBER |
|-------------------|-----------------|
| LR | KDRF31T |
| TR | KTR4L55HG |
| CAP, 1.. (3 KVAR) | KCAP3A6A |
| CAP, 2.. (5 KVAR) | KCAP5A6A |
| Fu1, 2, 3 | 22924 |



PB-POWER INPUT BLOCK:
WIRE RANGE-#18 TO #4 AWG.
TIGHTENING TORQUE 20 IN-LB.

GROUND LUG:

| WIRE RANGE | TIGHTENING TORQUE. |
|------------|--------------------|
| 1/0-3 AWG. | 50 IN-LBS |
| 4-6 AWG. | 45 IN-LBS |
| 8 AWG. | 40 IN-LBS |
| 10-14 AWG. | 35 IN-LBS |

CUSTOMER IS RESPONSIBLE FOR PROPER COOLING OF FILTER COMPONENTS. CAPACITORS MAXIMUM AMBIENT 50°C.

CUSTOMER IS RESPONSIBLE FOR INSTALLATION TO MEET ALL NATIONAL AND LOCAL ELECTRICAL CODES.

SEE DWG# 27709 FOR SCHEMATIC

| | | | | TOLERANCES (EXCEPT AS NOTED) | | TCI 7878 N. 86th STREET MILWAUKEE, WI 53224 | |
|----|----------|---------|-----|------------------------------|--|--|--|
| | | | | DECIMAL | | | |
| | | | | .XX ± .03 | | HG11LW00ST, 11KW 400/3/50, OPEN | |
| | | | | .XXX ± .01 | | | |
| | | | | FRACTIONAL | | DRN BY DSW DATE 05/11/2011 DWG. NO. 104662DG | |
| | | | | ± 1/32 | | | |
| | | | | ANGULAR | | SCALE TO FIT APRVD. C | |
| | | | | ± 1/2° | | | |
| A | AS BUILT | 5/10/11 | DSW | | | | |
| NO | REVISION | DATE | BY | | | | |