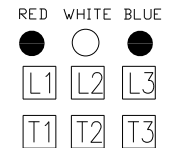
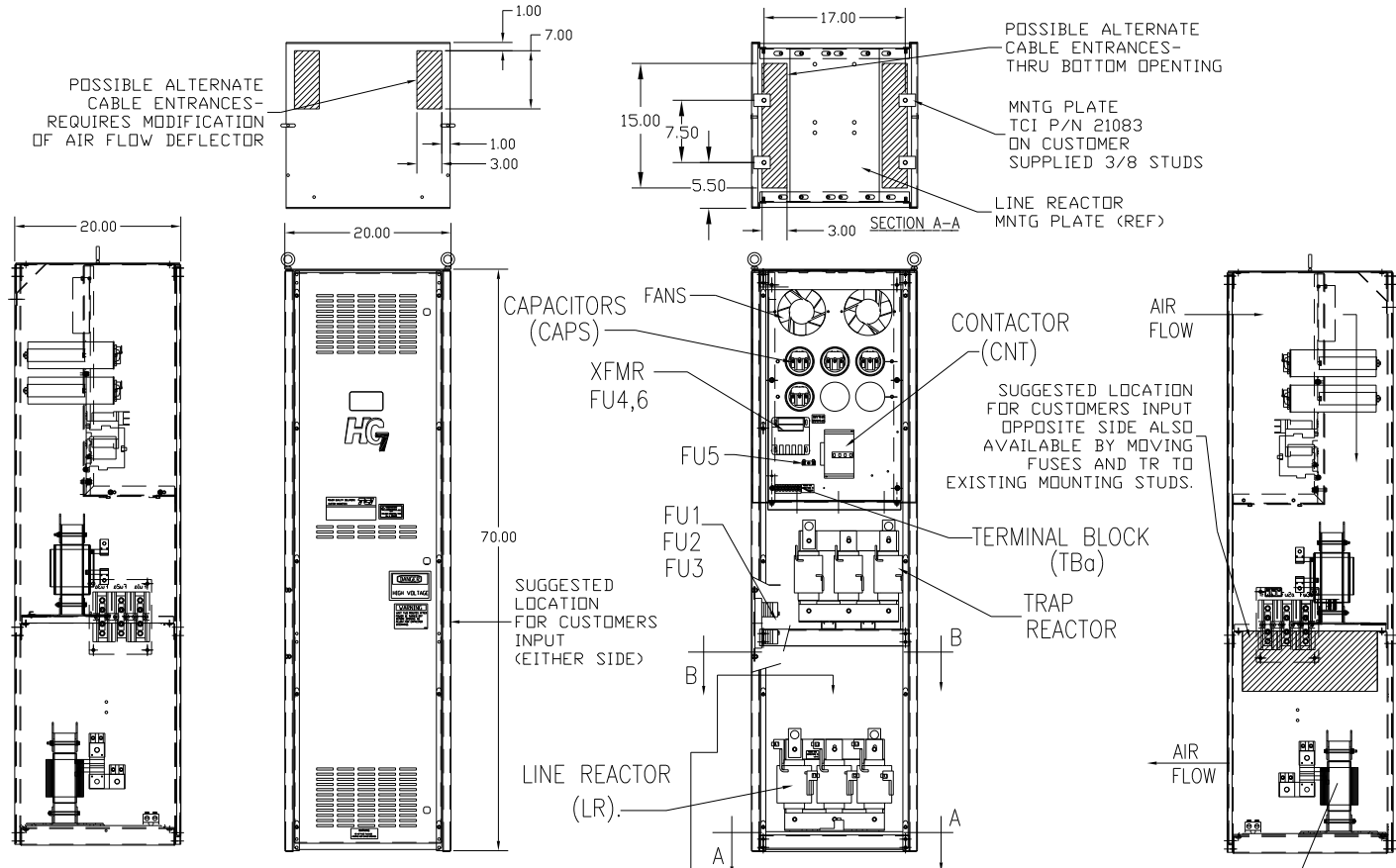
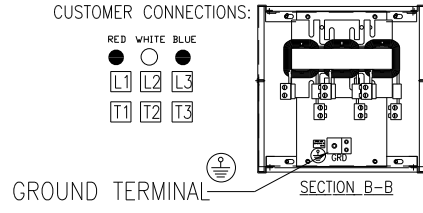


UNIT SPECIFICATIONS:					
KW	HARMONIC	VOLT	HZ	PHASE	FLA
110	5TH	400	50	3	210
ENCLOSURE		NEMA 1			
APPROX.WT. LBS.		435			



**CUSTOMER CONNECTIONS:**  
 WIRE RANGE-TWO 350MCM-4  
 TIGHTENING TORQUE 275 IN.-LB.  
  
**GROUND LUG:**  
 WIRE RANGE-TWO 350MCM-4  
 TIGHTENING TORQUE 275 IN.-LB.

SYMBOL	TCI PART NUMBER
LR	KDRL33T
TR	KTR45L55HG
CAP1,2,3,4 (20 KVAR)	KCAP20A6B
XFMR.	24393
Fu1, 2, 3	13334
Fu4,6	24073
Fu5	24012
CNT	19245



SEE DRAWING# 27703-1 FOR SCHEMATIC

CUSTOMER IS RESPONSIBLE FOR INSTALLATION TO MEET ALL NATIONAL AND LOCAL ELECTRICAL CODES.

TOLERANCES (EXCEPT AS NOTED)		TCI 7878 N. 86th STREET MILWAUKEE, WI 53224	
	DECIMAL		
	XX ± .03		
	XXX ± .01		
	FRACTIONAL ± 1/32		
	ANGULAR ± 1/2°		
A	AS BUILT	11/04/10	DSW
NO	REVISION	DATE	BY
		SCALE TO FIT	APRVD
		DATE 11/12/2010	DRW. NO. 104537DG
			SHT. 1 OF 1