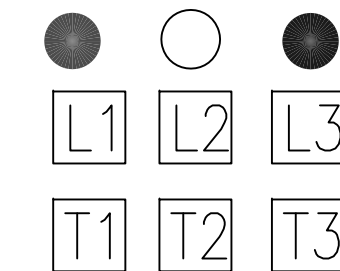


UNIT SPECIFICATIONS:					
KW	HARMONIC	VOLT	HZ	PHASE	FLA
110	5TH	400	50	3	210
ENCLOSURE		NEMA 1			
APPROX.WT. LBS.		425			

RED WHITE BLUE

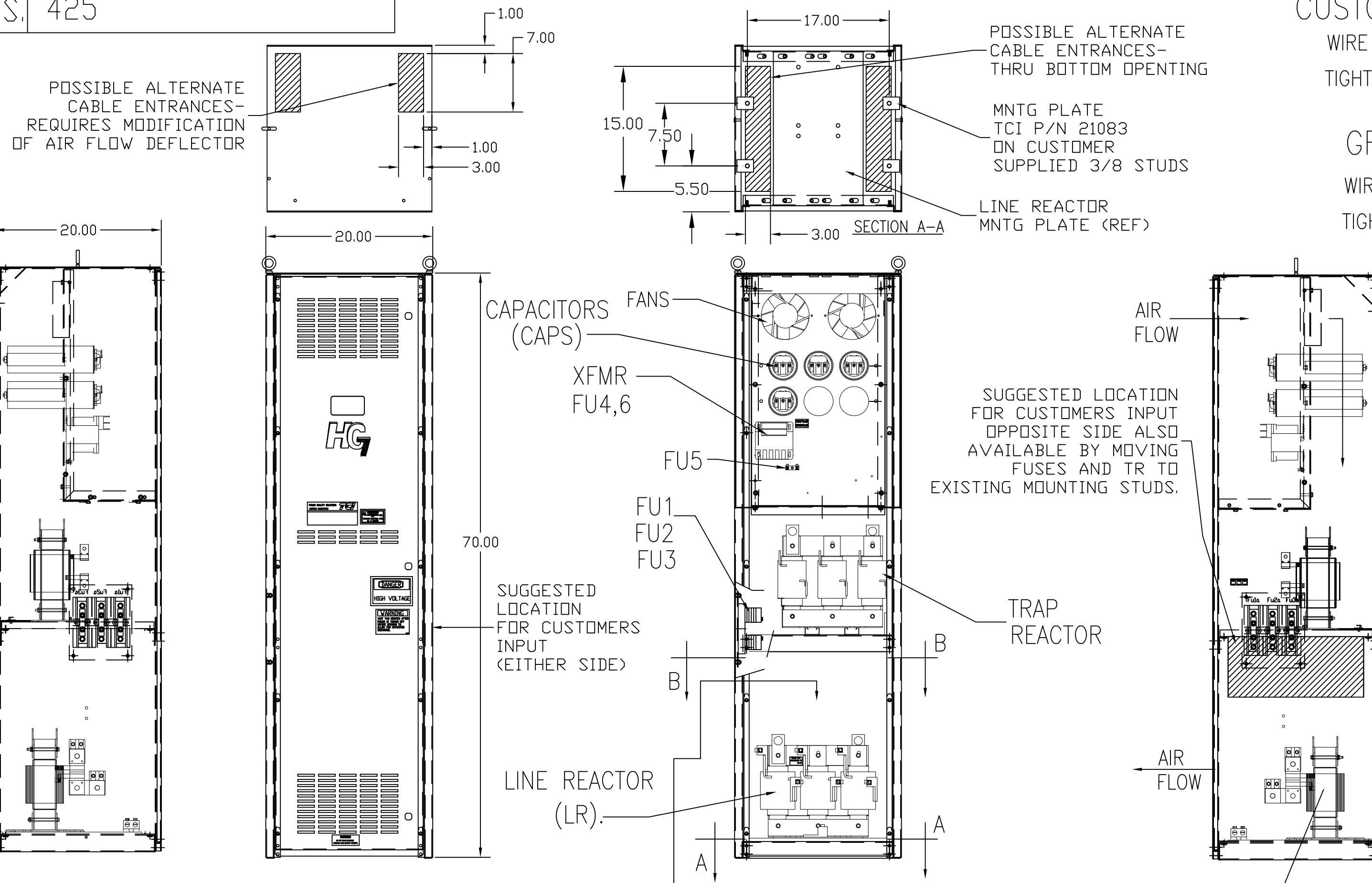


CUSTOMER CONNECTIONS:

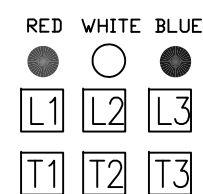
WIRE RANGE-TWO 350MCM-4  
TIGHTENING TORQUE 275 IN.-LB.

GROUND LUG:

WIRE RANGE-TWO 350MCM-4  
TIGHTENING TORQUE 275 IN.-LB.



CUSTOMER CONNECTIONS:



GROUND TERMINAL

SECTION B-B

CUSTOMER IS RESPONSIBLE FOR INSTALLATION TO MEET ALL NATIONAL AND LOCAL ELECTRICAL CODES.

SYMBOL	TCI PART NUMBER
LR	KDRL33T
TR	KTR45L55HG
CAP1,2,3,4 (20 KVAR)	KCAP20A6B
XFMR.	24393
Fu1, 2, 3	13334
Fu4,6	24073
Fu5	24012

SEE DRAWING# 27709-1 FOR SCHEMATIC

TCI, LLC CLAIMS PROPRIETARY RIGHTS IN THE MATERIAL HEREIN DISCLOSED. IT IS SUPPLIED WITHOUT PREJUDICE TO ANY PATENT RIGHTS OF TCI AND MAY NOT BE REPRODUCED OR USED TO MANUFACTURE ANYTHING SHOWN THEREIN WITHOUT WRITTEN PERMISSION FROM TCI.

TOLERANCES (EXCEPT AS NOTED):	
DECIMAL	.XX ±.03
	.XXX ±.01
FRACTIONAL	± 1/32
ANGULAR	± 1/2°

		W132 N10611 Grant Drive Germantown, WI 53022	
HG110LW01ST, 110KW 400/3/50, ENCLOSED			
DRN. BY	DSW	DATE	11/17/2010
SCALE	TO FIT	SIZE	C
DWG. NO.			104515DG
SHT.			1 OF 1

AS BUILT	11/04/10	DSW
REVISION	DATE	BY