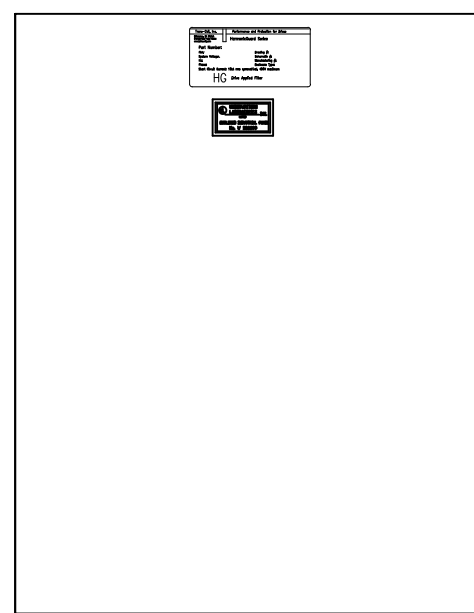
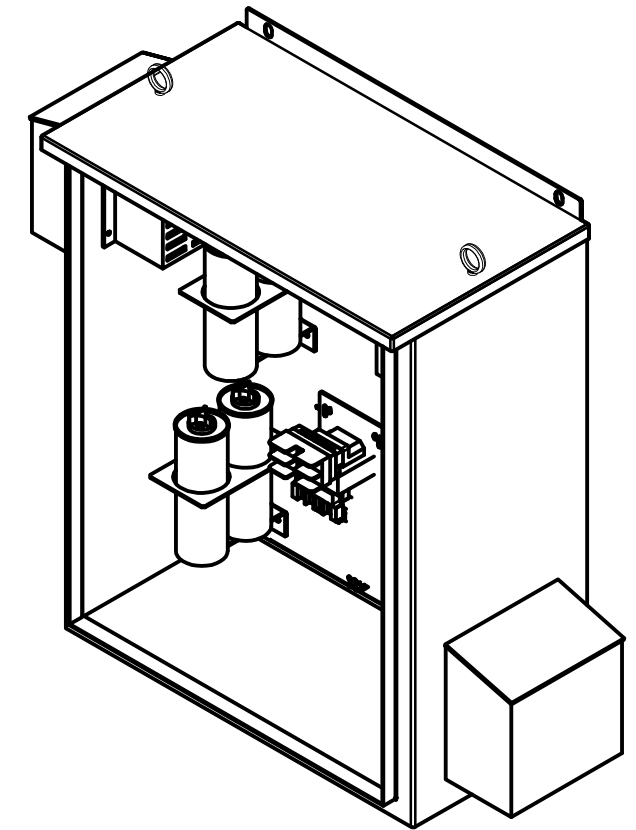
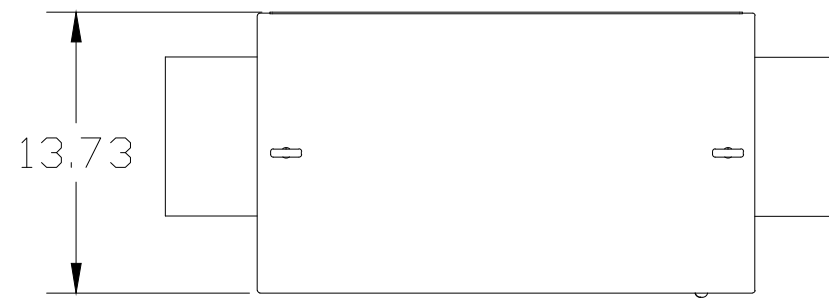
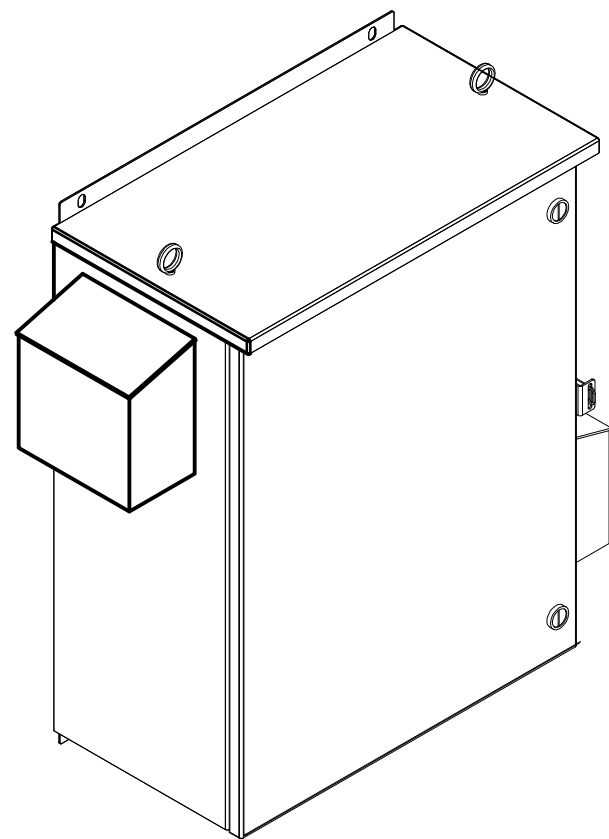


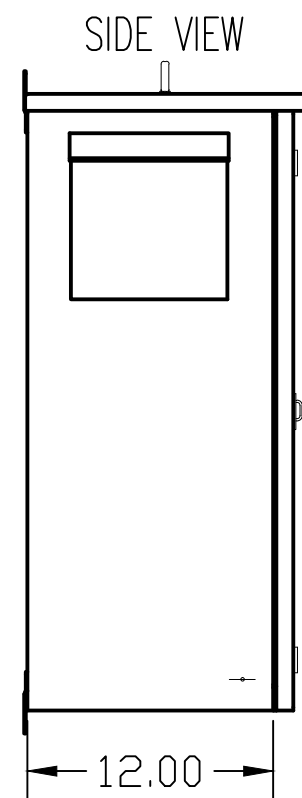
SEE DWG# 26901 FOR SCHEMATIC

CUSTOMER IS RESPONSIBLE FOR INSTALLATION TO MEET ALL NATIONAL AND LOCAL ELECTRICAL CODES.

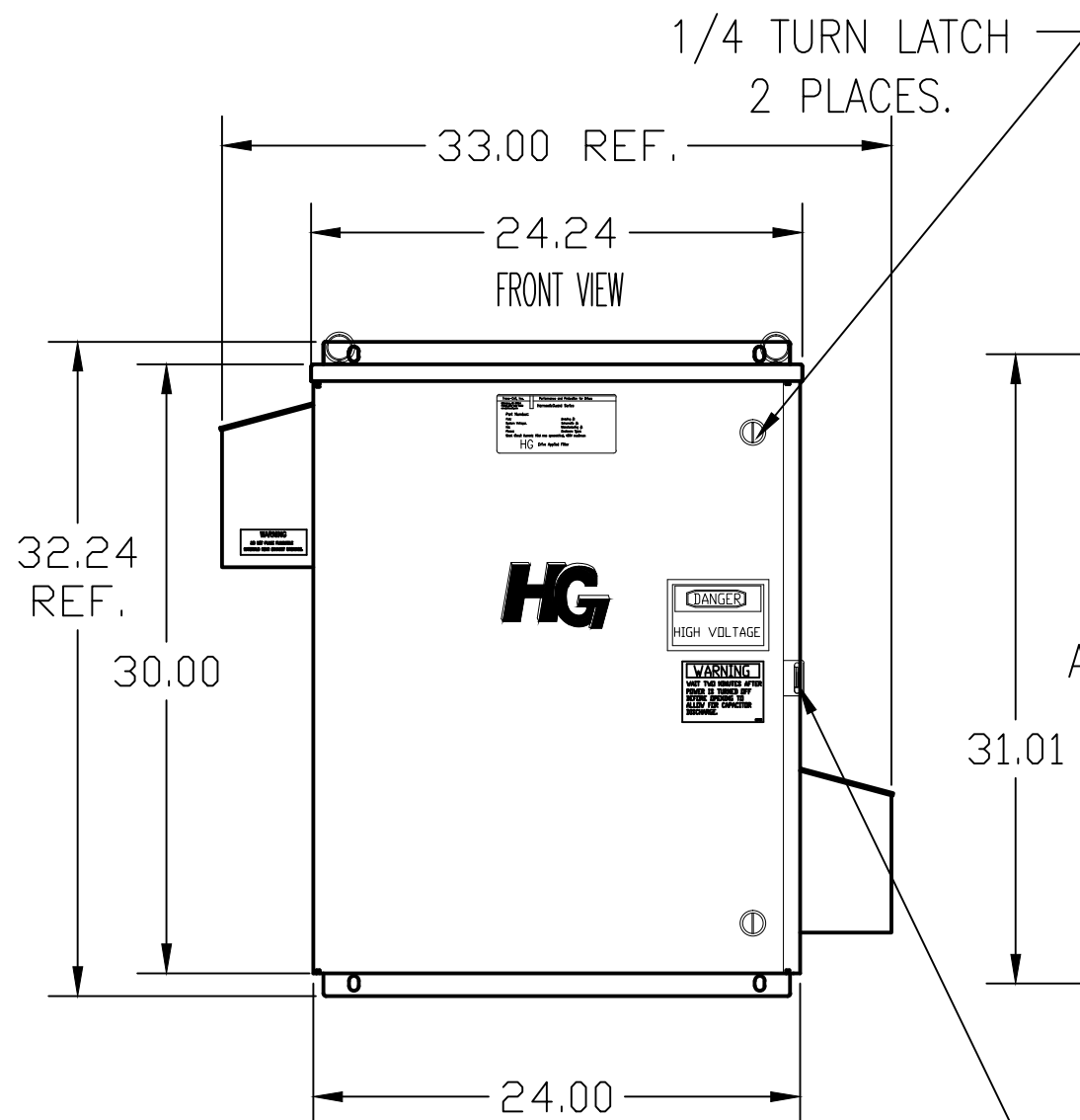
NOTE: USE ONLY HUBS OR FITTINGS THAT COMPLY WITH UL514B FOR TYPE 3R ENCLOSURES.



INSIDE DOOR

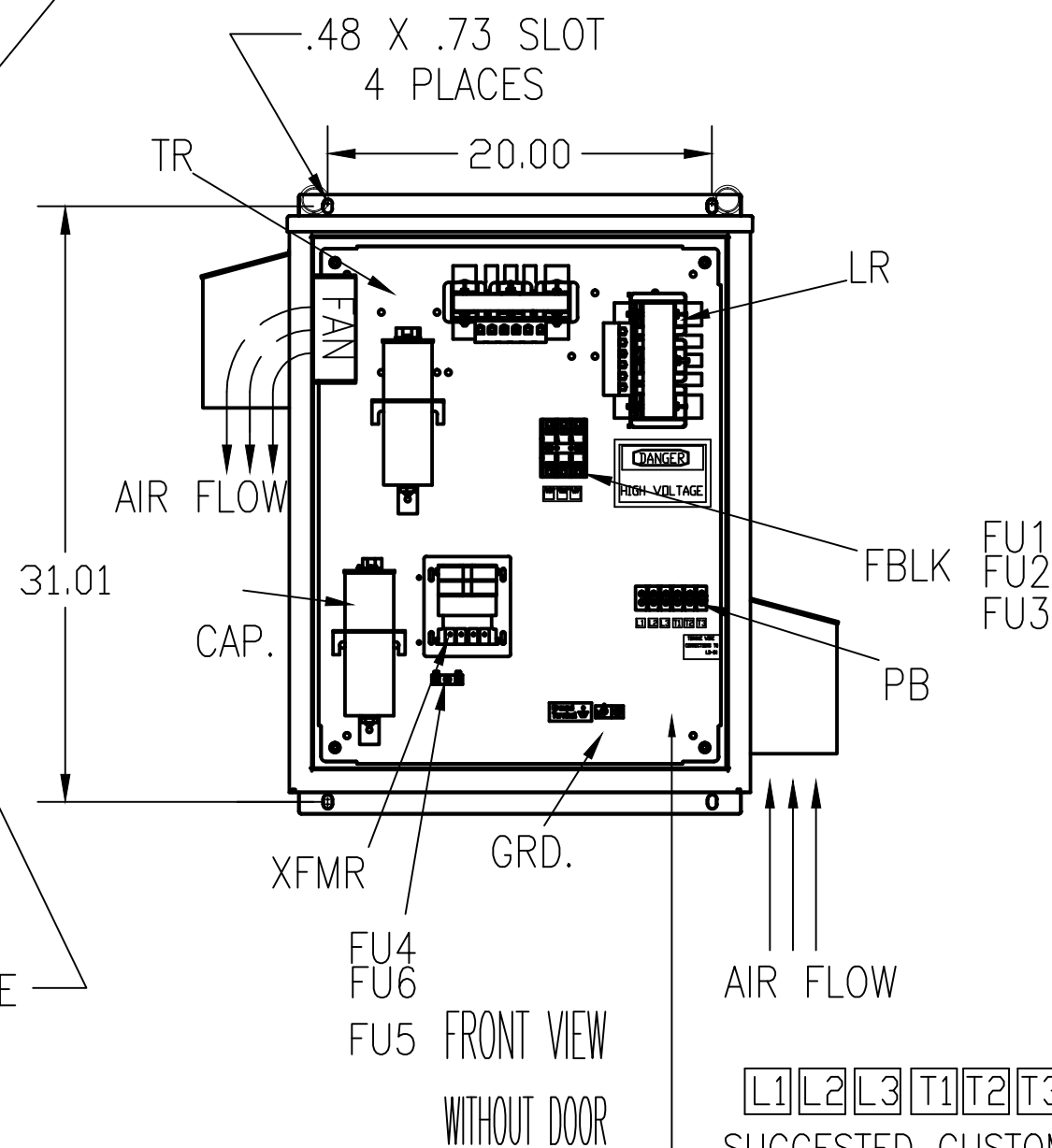


SIDE VIEW



1/4 TURN LATCH
2 PLACES.

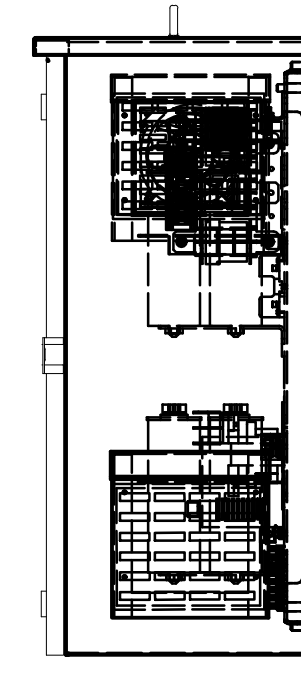
HASP AND STAPLE
FOR PADLOCKING.



FRONT VIEW
WITHOUT DOOR

L1 L2 L3 T1 T2 T3

SUGGESTED CUSTOMER WIRE ENTRY AND EXIT LOCATION



CUSTOMER IS RESPONSIBLE FOR INSTALLATION TO MEET ALL NATIONAL AND LOCAL ELECTRICAL CODES.

UNIT SPECIFICATIONS:						
KVAR	HARMONIC	VOLT	HZ	PHASE	HP	FLA
3	5TH	240	60	3	10	28
ENCLOSURE		UL TYPE 3R				
COLOR		WHITE				
APPROX.WT. LBS.		128				

SYMBOL	TCI P/N
LR	KDRE21T
TR	KTR3B65HG
CAP. (3 KVAR)	KCAP3A6A
XFMR.	23896
Fu1, 2, 3	15752
Fu4,6	14106
Fu5	17567

PB-POWER INPUT BLOCK:
WIRE RANGE-#18 TO #4 AWG.
TIGHTENING TORQUE 20 IN-LB.

GROUND LUG:
WIRE RANGE-1/0 TO #14 AWG.
1/0 AWG thru 2 AWG 50 IN-LBS. MAX.
4 AWG thru 6 AWG 45 IN-LBS. MAX.
8 AWG 40 IN-LBS. MAX.
10 AWG thru 14 AWG 35 IN-LBS. MAX.

TCI, LLC CLAIMS PROPRIETARY RIGHTS IN THE MATERIAL HEREIN DISCLOSED. IT IS SUPPLIED WITHOUT PREJUDICE TO ANY PATENT RIGHTS OF TCI AND MAY NOT BE REPRODUCED OR USED TO MANUFACTURE ANYTHING SHOWN THEREIN WITHOUT WRITTEN PERMISSION FROM TCI.

TOLERANCES (EXCEPT AS NOTED)			
DECIMAL	FRACTIONAL	ANGULAR	SCALE
.XX ±.12	± 1/32	± 1/2°	TO FIT
.XXX±.06			

DRN. BY	DSW	DATE	12/18/08	DWG. NO.	103655DG
SCALE	TO FIT	SIZE	C	SHT. 1 OF 1	

TCI® W132 N10611 Grant Drive
Germantown, WI 53022

HG10BW03ST, 10HP
240/3/60 UL TYPE 3R