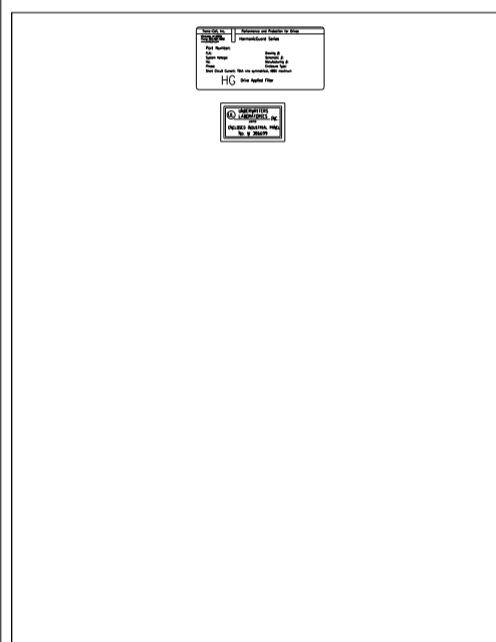
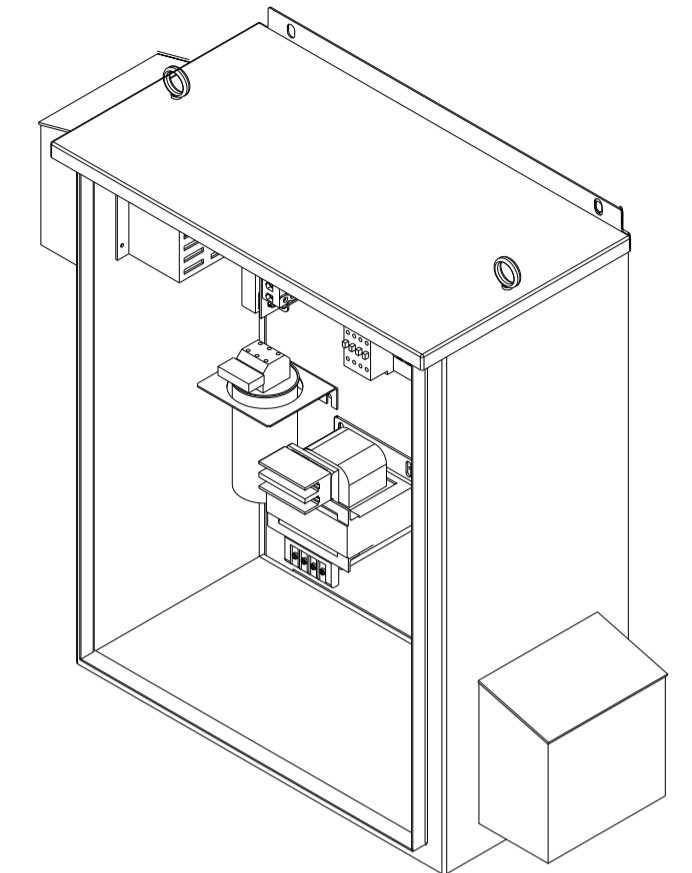
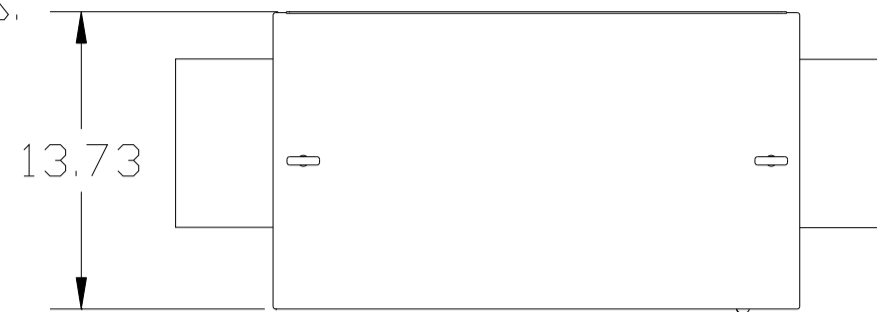


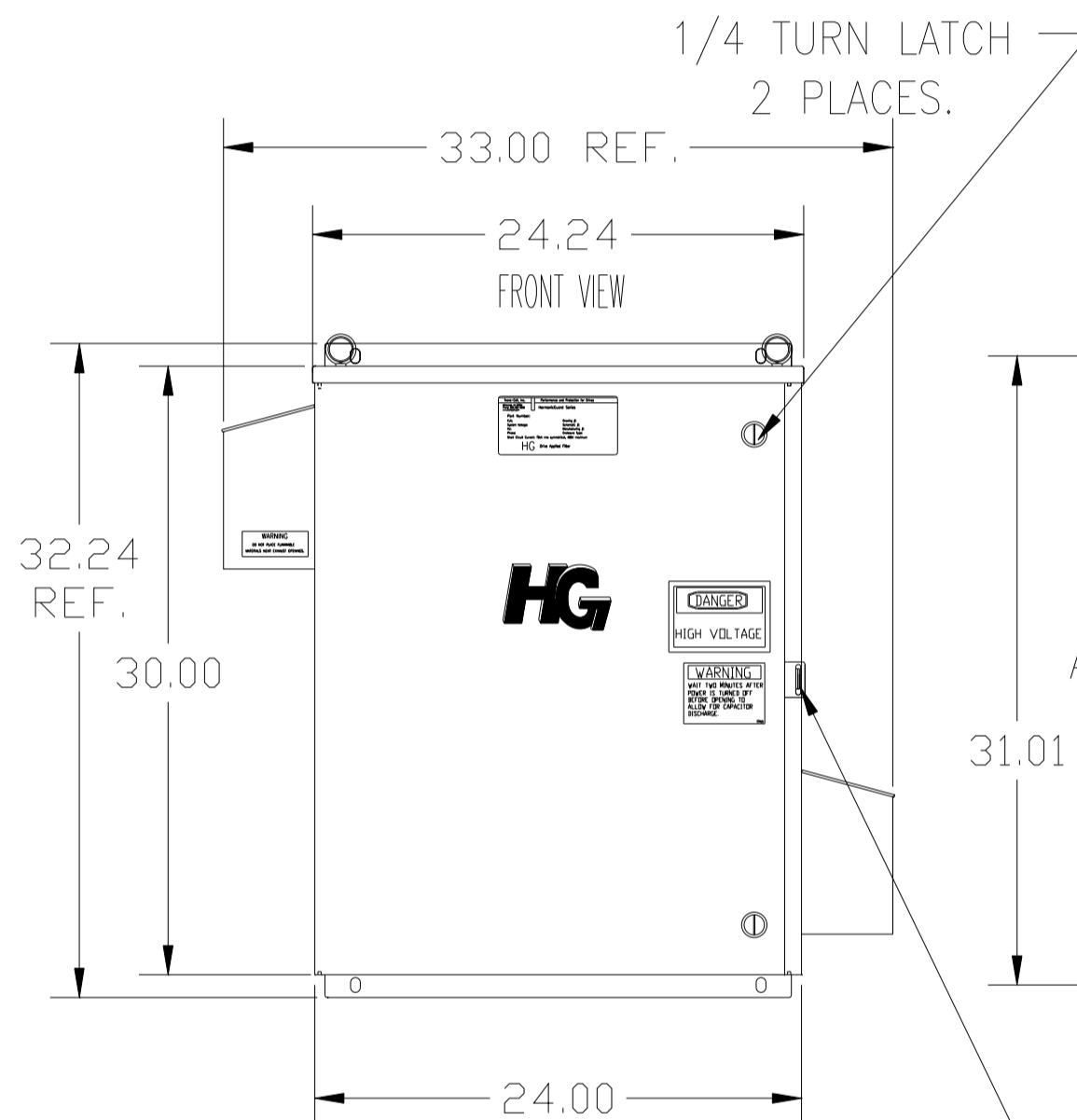
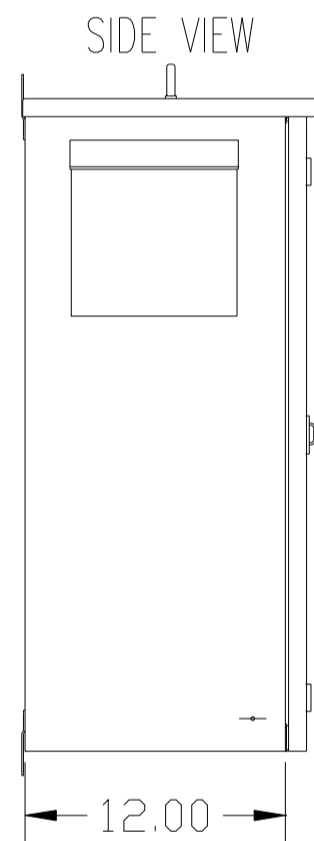
CUSTOMER IS RESPONSIBLE FOR INSTALLATION TO MEET ALL NATIONAL AND LOCAL ELECTRICAL CODES.

NOTE: USE ONLY HUBS OR FITTINGS THAT COMPLY WITH UL514B FOR TYPE 3R ENCLOSURES.

SEE DWG# 26752 FOR SCHEMATIC



INSIDE DOOR



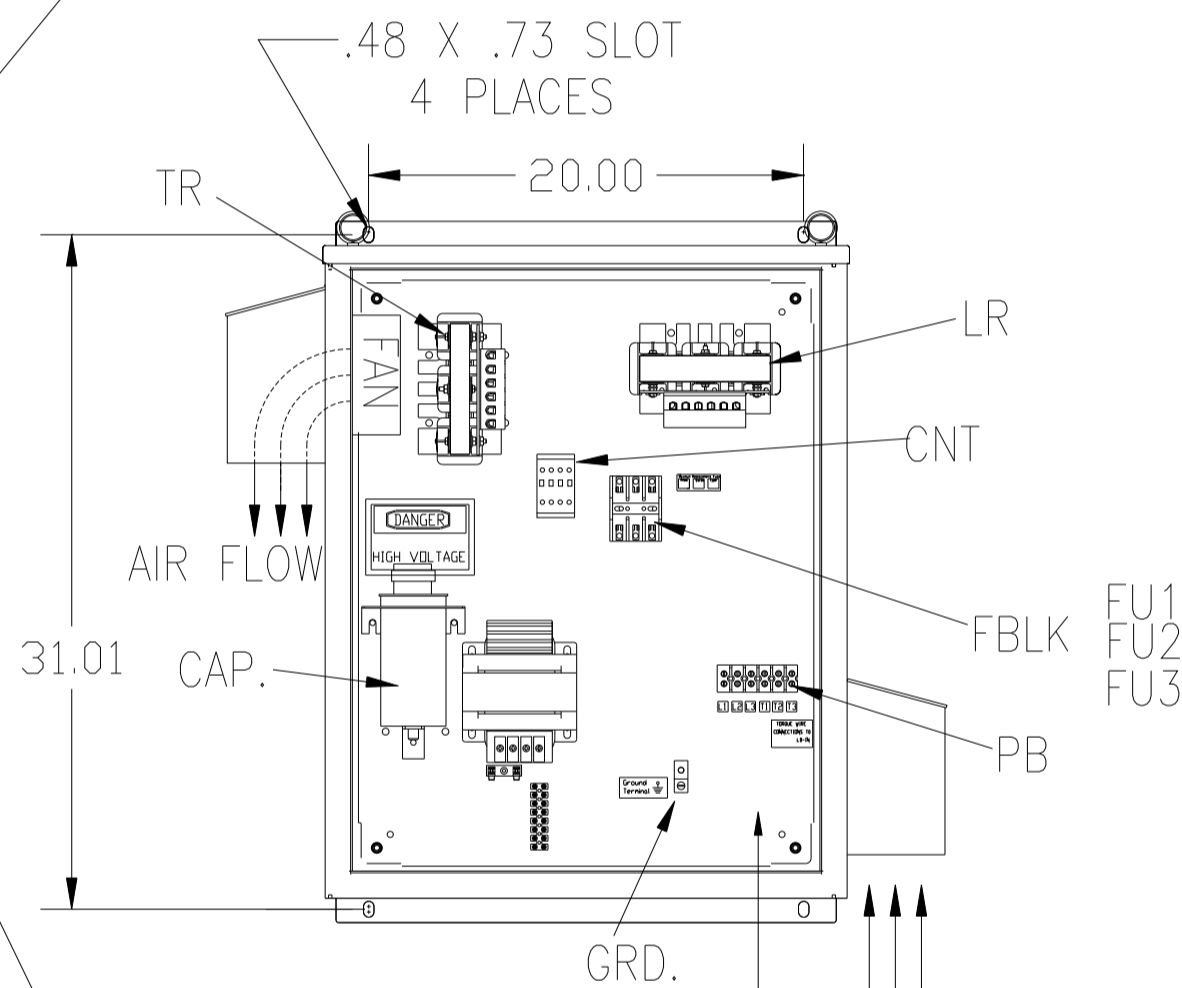
1/4 TURN LATCH  
2 PLACES.

PB-POWER INPUT BLOCK:  
WIRE RANGE-#18 TO #4 AWG.  
TIGHTENING TORQUE 20 IN-LB.

HASP AND STAPLE  
FOR PADLOCKING.

SYMBOL	TCI PART NUMBER
LR	KDRE1T
TR	KTR3A65HG
CAP. (3 KVAR)	27605
XFMR.	23896
Fu1, 2, 3	11262
Fu4,6	24009
Fu5	17567
CNT	12434

ALTERNATE	TCI PART NUMBER
CAP. (3 KVAR)	KCAP3A6A

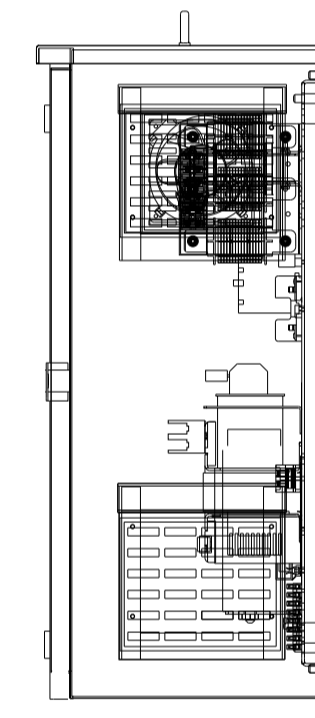


FRONT VIEW  
WITHOUT DOOR

AIR FLOW

L1 L2 L3 T1 T2 T3

SUGGESTED CUSTOMER WIRE ENTRY AND EXIT LOCATION



GROUND LUG:  
WIRE RANGE-1/0 TO #14 AWG.

1/0 AWG thru 2 AWG 50 IN-LBS. MAX.  
4 AWG thru 6 AWG 45 IN-LBS. MAX.  
8 AWG 40 IN-LBS. MAX.  
10 AWG thru 14 AWG 35 IN-LBS. MAX.

UNIT SPECIFICATIONS:					
KVAR	HARMONIC	VOLT	HZ	PHASE	HP
3	5TH	480	60	3	10
ENCLOSURE		UL TYPE 3R			
COLOR		WHITE			
APPROX.WT. LBS.		113			

NO	REVISION	DATE	BY
E	2900 CHG TO ASC CAPS	3/11/2013	DSW
D	2707 CHG GRD. LUG	6/15/11	DSW
C	2702 RVSD FUSEBLK&FUSE	9/2/10	RJC
B	2684 12434 WAS ADD		
B	26739	5/27/10	DSW
A	2641 ADD EYEBOLTS	10/13/09	DSW

TOLERANCES (EXCEPT AS NOTED)
DECIMAL
.XX ±.12
.XXX±.06
FRACTIONAL
± 1/32
ANGULAR
± 1/2°



7878 N. 86th STREET  
MILWAUKEE, WI 53224

HG10AW03STC, 10HP  
480/3/60 UL TYPE 3R

DRN. BY	DSW	DATE	08/25/08	DWG. NO.	103666DG
SCALE	TO FIT	APRVD.			SHT.1 of 1