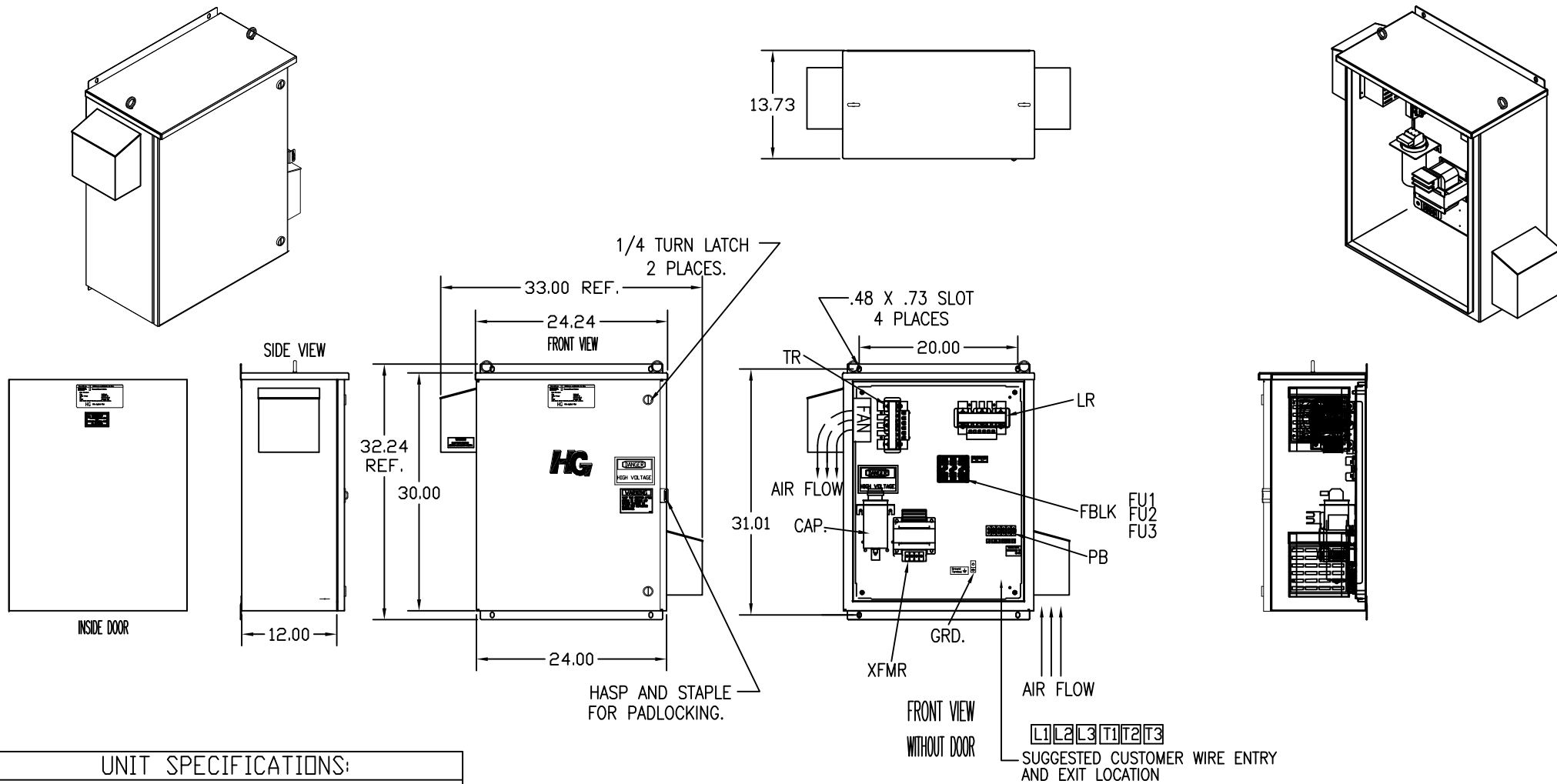


SEE DWG# 26756 FOR SCHEMATIC

NOTE: USE ONLY HUBS OR FITTINGS THAT COMPLY WITH UL514B FOR TYPE 3R ENCLOSURES.

CUSTOMER IS RESPONSIBLE FOR INSTALLATION TO MEET ALL NATIONAL AND LOCAL ELECTRICAL CODES.



UNIT SPECIFICATIONS:

KVAR	HARMONIC	VOLT	HZ	PHASE	HP
3	5TH	480	60	3	10
ENCLOSURE		UL TYPE 3R			
COLOR		WHITE			
APPROX.WT. LBS.		112			

PB-POWER INPUT BLOCK:
WIRE RANGE-#18 TO #4 AWG.
TIGHTENING TORQUE 20 IN-LB.

GROUND LUG:
WIRE RANGE-1/0 TO #14 AWG.
1/0 AWG thru 2 AWG 50 IN-LBS. MAX.
4 AWG thru 6 AWG 45 IN-LBS. MAX.
8 AWG 40 IN-LBS MAX.
10 AWG thru 14 WG 35 IN-LBS. MAX.

NO	REVISION	DATE	BY	TOLERANCES EXCEPT AS NOTED:	DECIMAL	FRACTIONAL	ANGULAR
E	removed secondary fuse	4/18/17	MJS	.XX	±.12		
D	3012 FBLK, CAP CHG	1/27/14	BMZ	.XXX±	±.06		
C	2900 CHG TO ASC CAPS	3/1/13	DSW	± 1/32			
B	2707 CHG GRD. LUG	6/15/11	DSW	± 1/2"			
A	2641 ADD EYEBOLTS	10/13/09	DSW				

TCI® w132 N10611 Grant Drive
Germantown, WI 53022

HG10AW03ST, 10HP
480/3/60 UL TYPE 3R

DRN BY DSW DATE 08/25/08 DWG. NO. 103611DG
SCALE TO FIT APPR. C