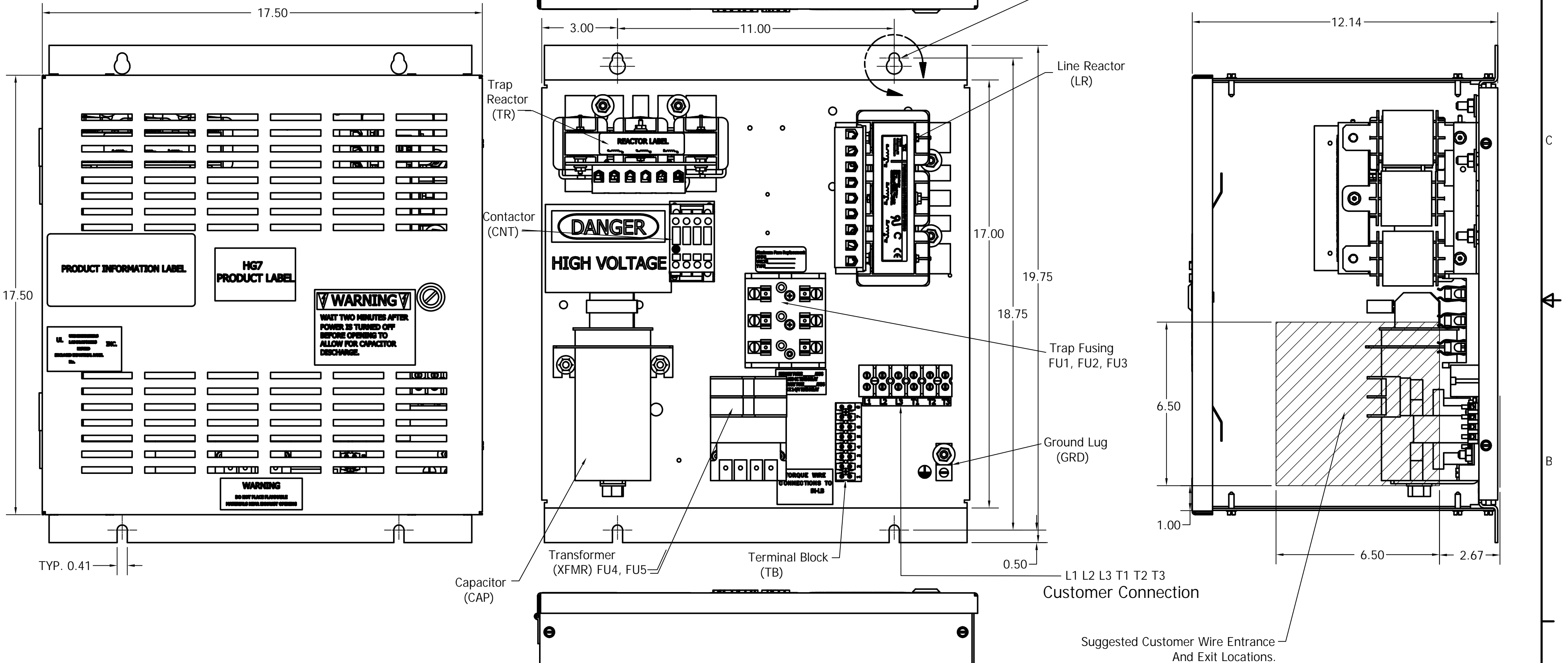
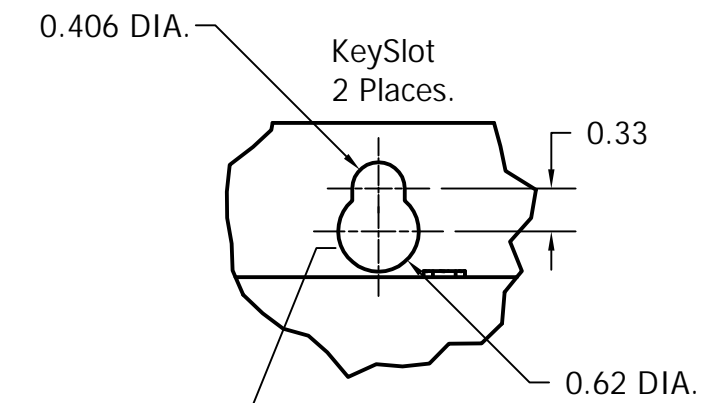


HG10AW01STC

kVar	Harmonic	Volt	Hz.	Phase	HP
3	5TH.	480	60	3	10
Enclosed, Type 1					
Options		Contactor			
Approx. Weight.		70LBS.			

See Drawing# 26689 For Schematic.
See IOM Manual For Wire Range And Torques.



Customer Is Responsible For Installation
To Meet All National And Local Electrical Codes.

		TOLERANCES (EXCEPT AS NOTED)		TCI® W132 N10611 Grant Drive Germantown, WI 53022	
		DECIMAL		HG10AW01STC	
		.XX - .25		10HP, 480/3/60	
		.XXX - .10		Type 1, Harmonic Filter, Contactor Option.	
		FRACTIONAL		DRN BY: DSW DATE: 7/3/2008 DWG. SIZE: C 103501DG	
		- 1/16		SCALE: APRVD: 1	
E 3267 CNT CHANGE		8/21/15BWM		1	
NO REVISION		DATE BY		ANGULAR - 1°	