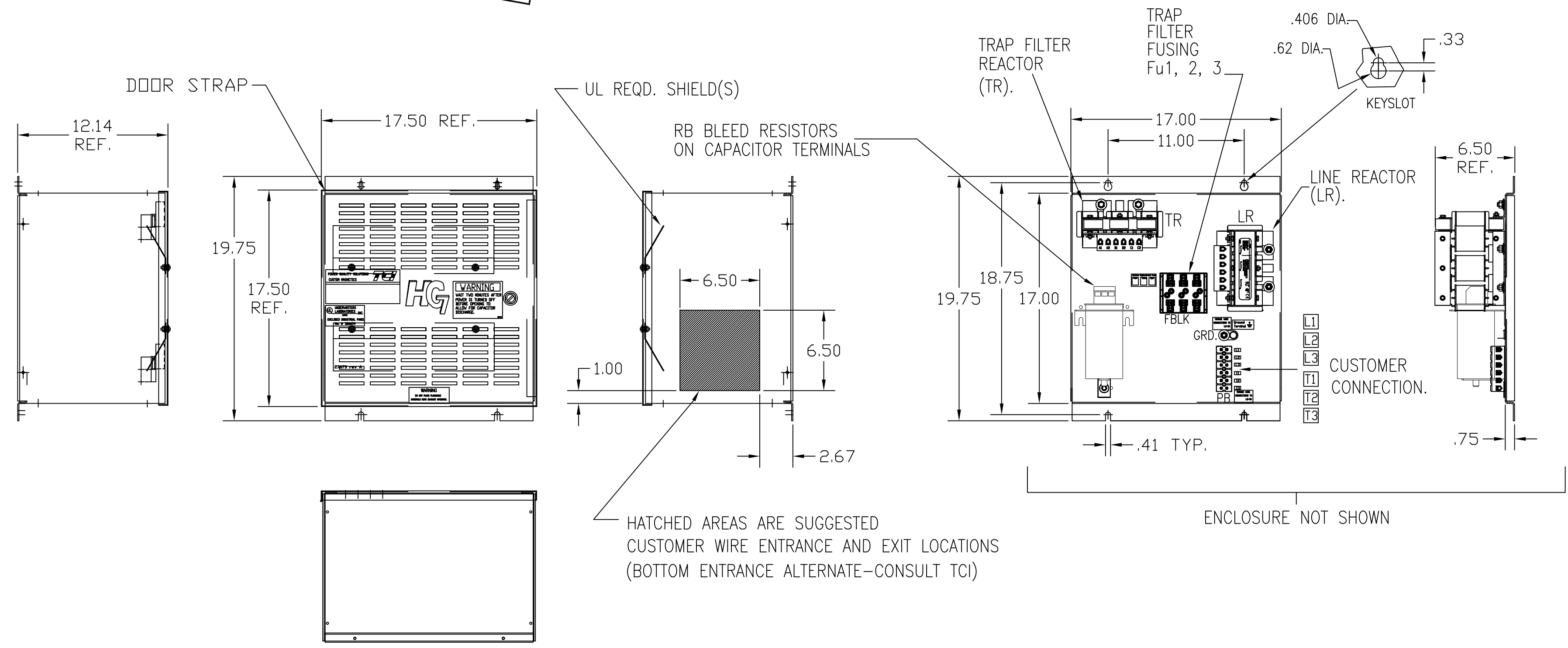
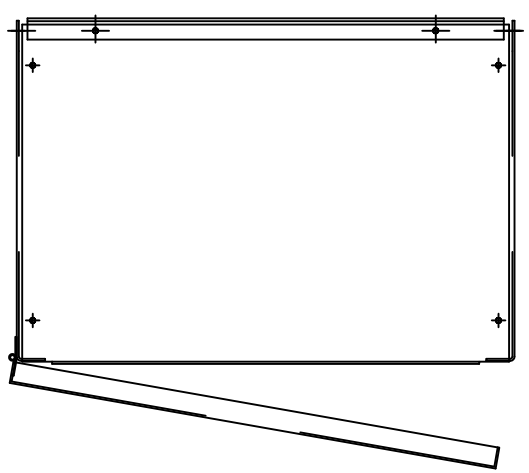


UNIT SPECIFICATIONS:					
KVAR HARMONIC	VOLT	HZ	PHASE	HP	
3 5TH	480	60	3	10	
ENCLOSURE	NEMA 1	⚠			
APPROX.WT. LBS.	66				

HG10AW01ST	
COMPONENTS	
LINE REACTOR LR	X
TRAP REACTOR TR	X
CAPACITOR CAP	X
TRAP FUSING FU1,2,3	X
XFMR FU4,6	X
XFMR FU5	X



PB-POWER INPUT BLOCK:
WIRE RANGE-#18 TO #4 AWG.
TIGHTENING TORQUE 20 IN-LB.

GROUND LUG: ⚠
WIRE RANGE-1/0 TO #14 AWG.
TORQUE:
#1/0-#2 AWG 50 LB-IN
#4-#6 AWG 45 LB-IN
#8 AWG 40 LB-IN
#10 -#14 AWG 35 LB-IN

SEE 25077 FOR SCHEMATIC
CUSTOMER IS RESPONSIBLE FOR INSTALLATION
TO MEET ALL NATIONAL AND LOCAL ELECTRICAL CODES.

TCI, LLC CLAIMS PROPRIETARY RIGHTS IN THE MATERIAL HEREIN DISCLOSED. IT IS SUPPLIED WITHOUT PREJUDICE TO ANY PATENT RIGHTS OF TCI AND MAY NOT BE REPRODUCED OR USED TO MANUFACTURE ANYTHING SHOWN THEREIN WITHOUT WRITTEN PERMISSION FROM TCI.	F	3012 FBLK, CAP CHG	1/27/14	BMZ	TOLERANCES (EXCEPT AS NOTED):	W132 N10611 Grant Drive Germantown, WI 53022 HG10AW01ST, HG7 STANDARD 10HP, 480/3/60, TYPE 1 DRN. BY DSW DATE 03/08/05 DWG. NO. 102553DG SCALE TO FIT SIZE C SHT.1 OF 1
	D	RVSD. GRD. LUG SPEC'S			DECIMAL	
	C	2748 REMOVED "BLACK"	5/25/11	RJC	.XX ±.03	
	B	2722 ASC CAP TRIAL	1/20/11	DSW	.XXX±.01	
	A	2516, CAP WAS 16446	9/30/07	RJC	FRACTIONAL ± 1/32	
	NO	REVISION	DATE	BY	ANGULAR ± 1/2°	