

SEE 26824 FOR SCHEMATIC

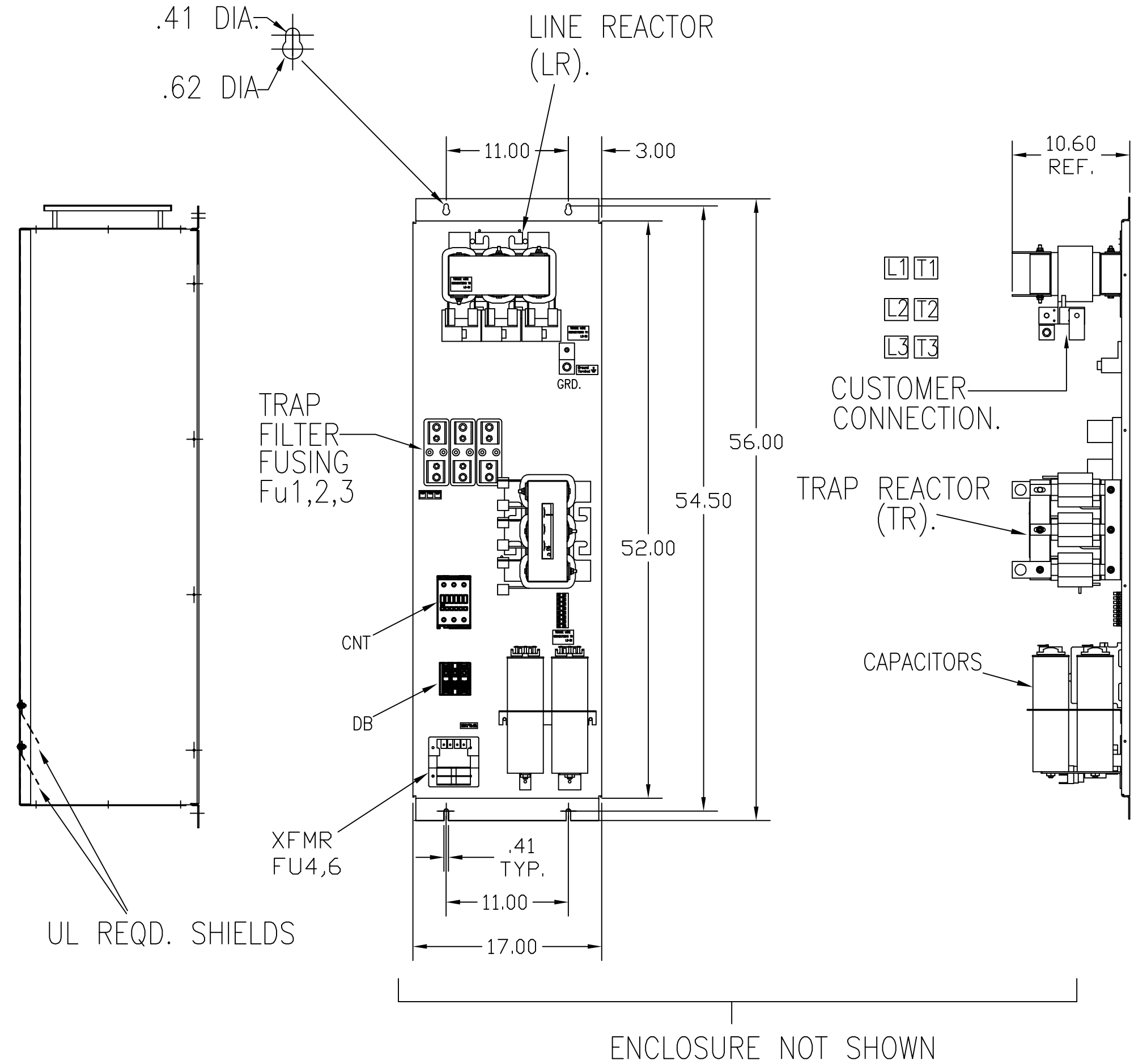
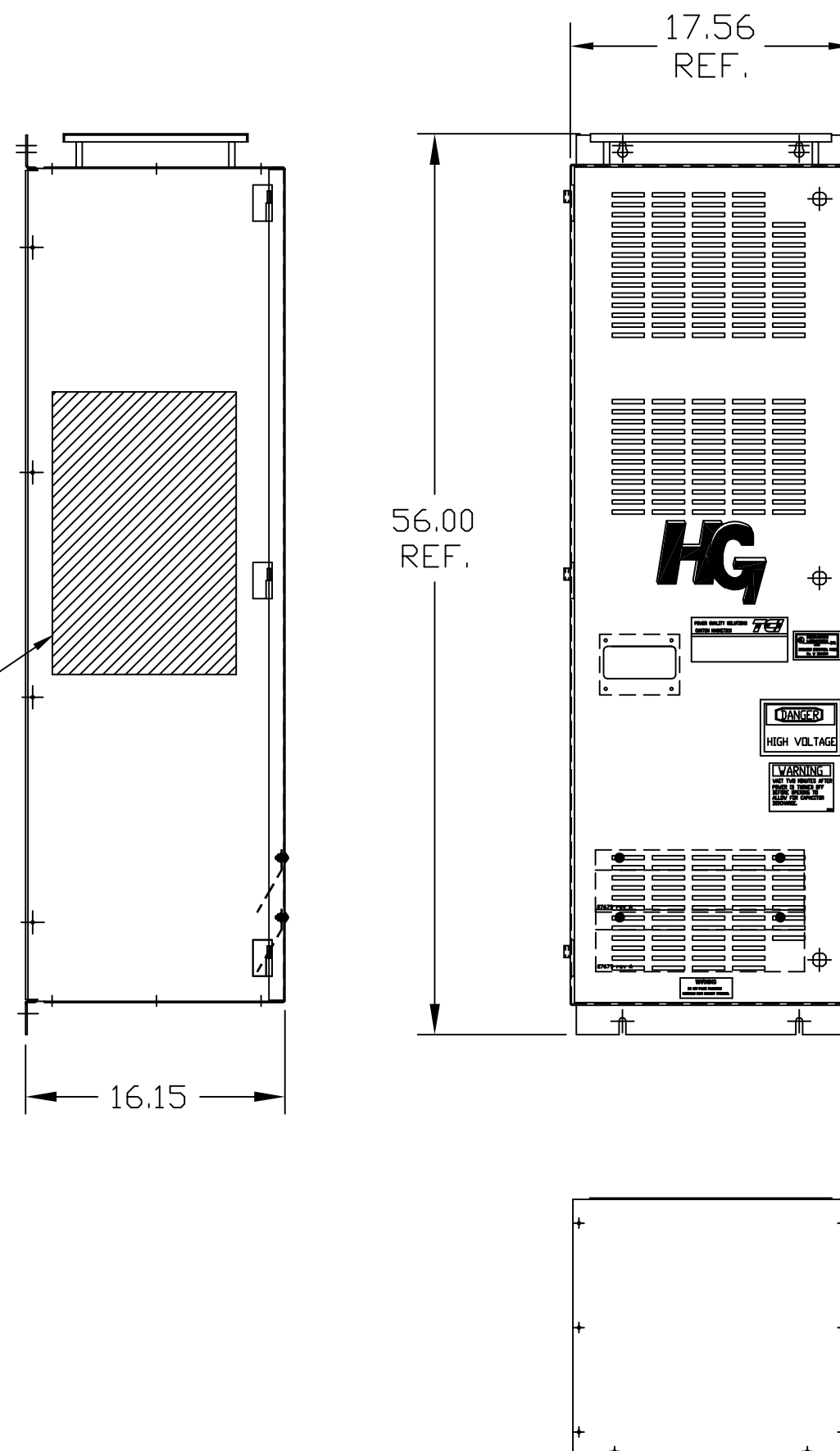
CUSTOMER CONNECTION OUTPUT:  
 WIRE RANGE—ONE 600MCM-4  
 TWO 250MCM-1/0  
 TIGHTENING TORQUE 500 IN-LB.

GROUND LUG:  
 WIRE RANGE—ONE 600MCM-4  
 TWO 250MCM-1/0  
 TIGHTENING TORQUE 500 IN-LB.

| SYMBOL         | HG100BW01STC |
|----------------|--------------|
| LR             | X            |
| TR             | X            |
| CAPS (10 KVAR) | X            |
| XFMR.          | X            |
| Fu1a;2a;3a     | X            |
| Fu4,6          | X            |
| CNT            | X            |
| DB             | X            |

| UNIT SPECIFICATIONS: |                |    |       |     |  |
|----------------------|----------------|----|-------|-----|--|
| KVAR HARMONIC        | VOLT           | HZ | PHASE | HP  |  |
| 30 5TH               | 240            | 60 | 3     | 100 |  |
| ENCLOSURE            | NEMA 1         |    |       |     |  |
| FEATURES             | WITH CONTACTOR |    |       |     |  |
| APPROX.WT. LBS.      | 298            |    |       |     |  |

HATCHED AREA(S)  
 ARE SUGGESTED AREA(S)  
 FOR CUSTOMER INPUT/  
 OUTPUT WIRE LOCATIONS



CUSTOMER IS RESPONSIBLE FOR INSTALLATION  
 TO MEET ALL NATIONAL AND LOCAL ELECTRICAL CODES.

|    |                        |         |     | TOLERANCES<br>(EXCEPT AS NOTED) | TCI W132 N10611 GRANT DRIVE<br>GERMANTOWN, WI. 53022 |                                 |
|----|------------------------|---------|-----|---------------------------------|--|---------------------------------|
|    |                        |         |     | DECIMAL                         |  |                                 |
|    |                        |         |     | .XX ±.03                        |  |                                 |
|    |                        |         |     | .XXX ±.01                       |  |                                 |
| B  | 3267 CNT CHANGE        | 7/30/15 | BWM | FRACTIONAL<br>± 1/32            | HG100BW01STC, 100HP<br>240/3/60, ENCL, WITH CNT      |                                 |
| A  | 2702 REVISED UL SHIELD | 1/31/12 | RJC | ANGULAR<br>± 1/2°               | DRN. BY DSW  | DATE 10/21/08                   |
| NO | REVISION               | DATE    | BY  |                                 | SCALE TO FIT   | DWG. NO. 103598DG<br>SHT.1 of 1 |