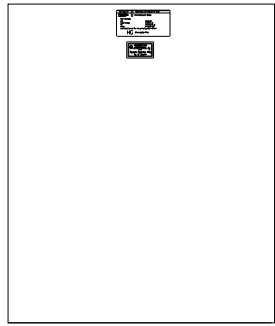
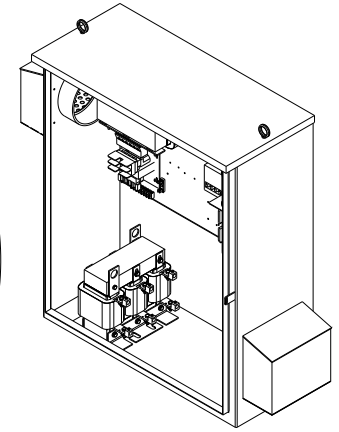
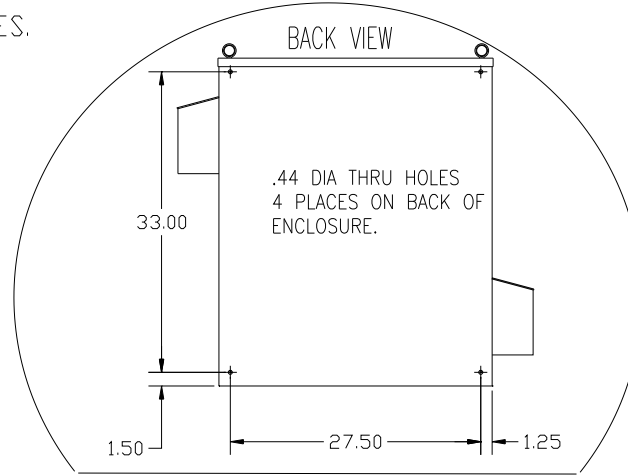
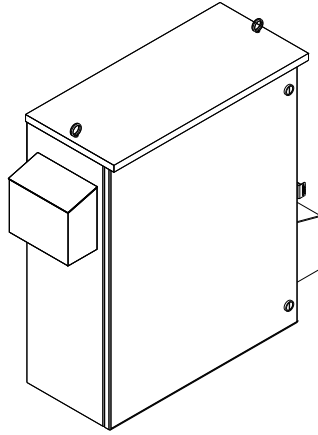


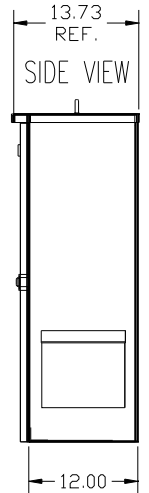
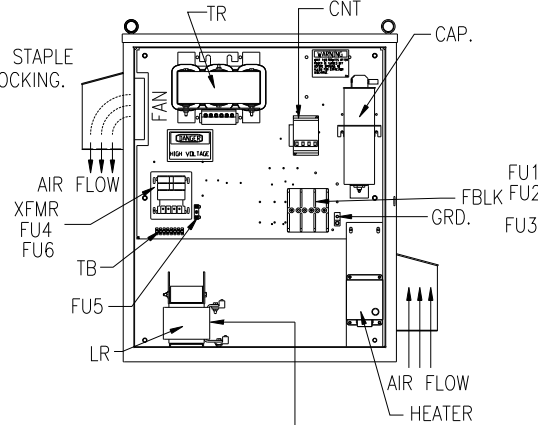
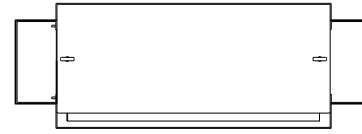
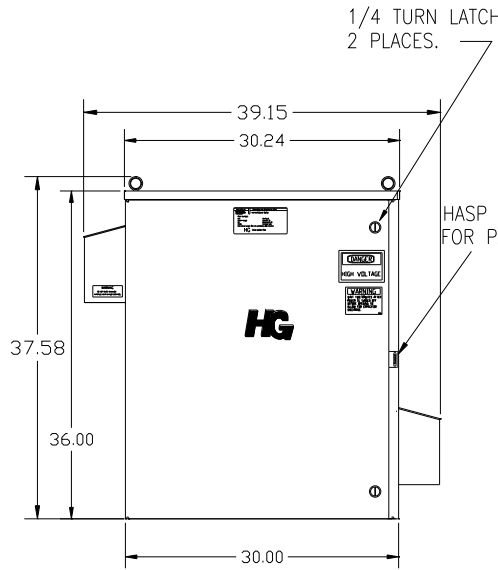
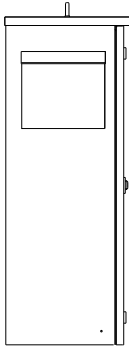
CUSTOMER IS RESPONSIBLE FOR INSTALLATION
TO MEET ALL NATIONAL AND LOCAL ELECTRICAL CODES.

NOTE: USE ONLY HUBS OR FITTINGS THAT COMPLY
WITH UL514B FOR TYPE 3R ENCLOSURES.

SEE DWG# 26751 FOR SCHEMATIC



SIDE VIEW



1 2 3 T1 T2 T3
SUGGESTED CUSTOMER WIRE ENTRY
AND EXIT LOCATION

HG100AW03STCH	
COMPONENTS	
LINE REACTOR LR	X
TRAP REACTOR TR	X
CAPACITOR CAP	X
TRAP FUSING FU1,2,3	X
TRANSFORMER XFMR	X
TRANSFORMER FUSING FU4,6	X
TRANSFORMER FUSING FU5	X
CONTACTOR CNT	X
HEATER	X

CUSTOMER CONNECTIONS	
1 2 3 T1 T2 T3 AND GROUND LUG.	
WIRE SIZE (AWG)	RATED TORQUE (IN-LBS)
2/0-3	50
4-6	45
8	40
10-14	35

UNIT SPECIFICATIONS:					
KVAR	HARMONIC	VOLT	HZ	PHASE	HP
30	5TH	480	60	3	100
ENCLOSURE		UL TYPE 3R			
COLOR		WHITE			
APPROX.WT. LBS.		275			

				TOLERANCES (EXCEPT AS NOTED)		7878 N. 86th STREET MILWAUKEE, WI 53224	
				DECIMAL			
				.XX ±.12		HG100AW03STCH, 100HP 480/3/60 UL TYPE 3R	
				.XXX±.06			
B 3033 26747 TO 28852				2/21/14	DSW	FRACTIONAL ± 1/32	
A 2641 ADD EYEBOLTS				10/21/09	DSW	ANGULAR ± 1/2°	
NO	REVISION	DATE	BY	SCALE TO FIT	DRN. BY DSW	DATE 8/21/08	DWG. NO. 103730DG
							SHT. 1 OF 1