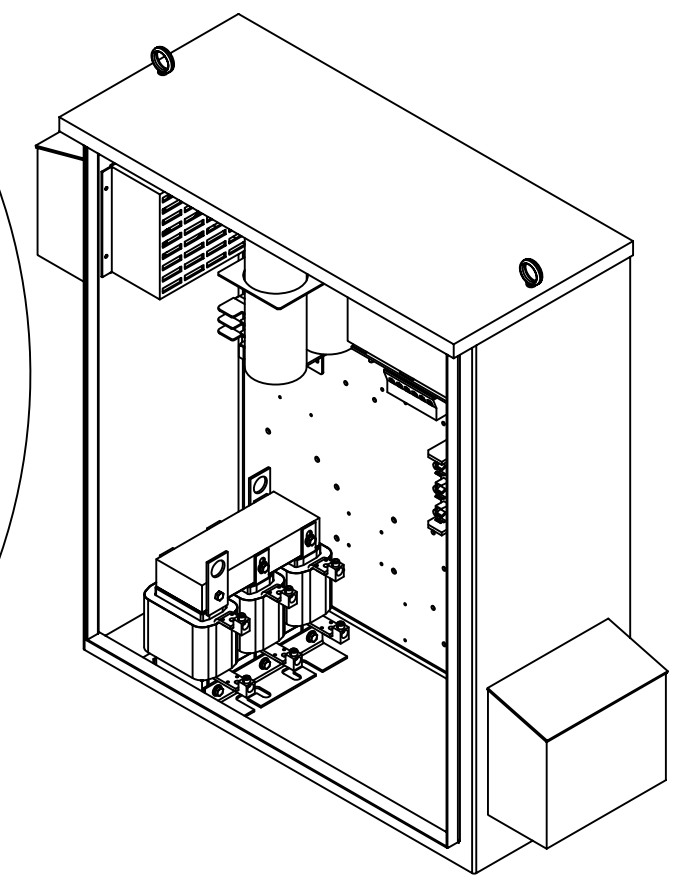
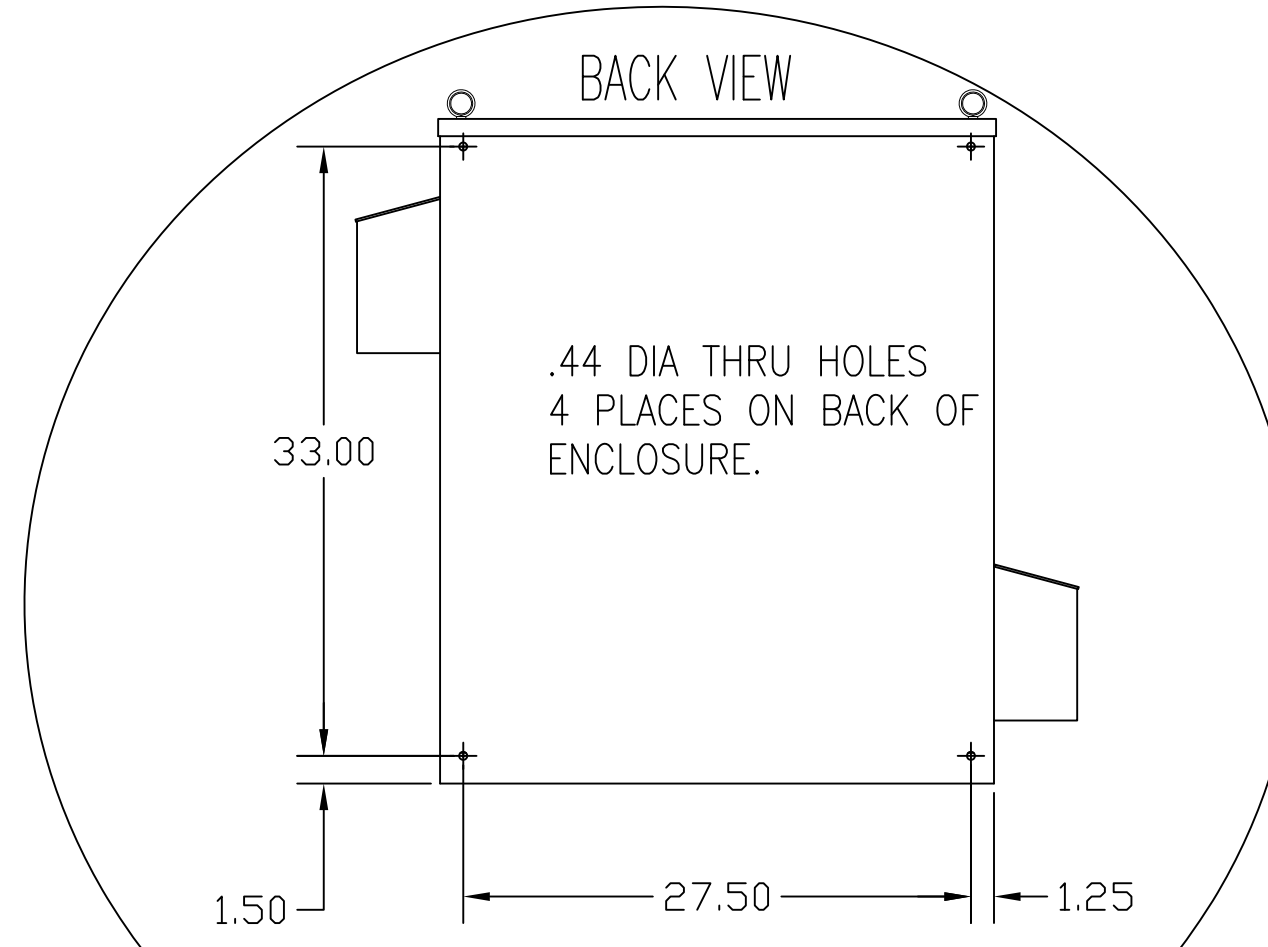
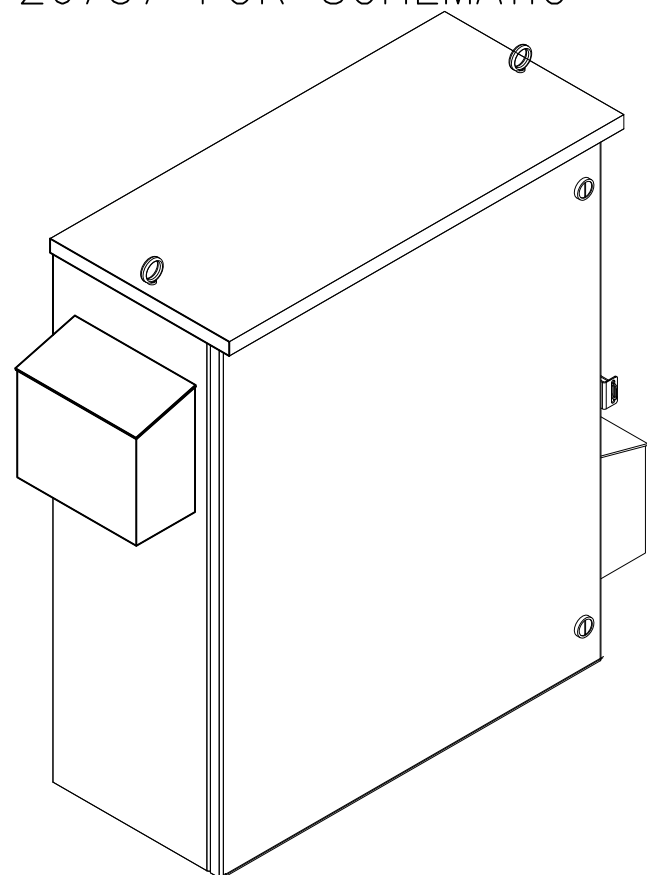


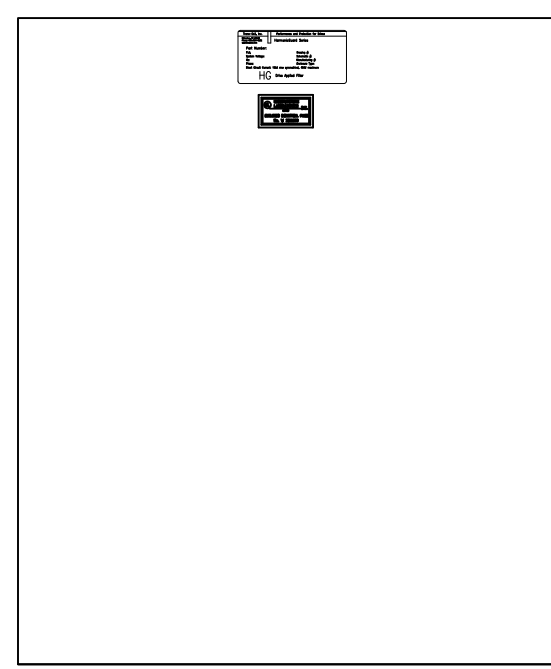
CUSTOMER IS RESPONSIBLE FOR INSTALLATION TO MEET ALL NATIONAL AND LOCAL ELECTRICAL CODES.

NOTE: USE ONLY HUBS OR FITTINGS THAT COMPLY WITH UL514B FOR TYPE 3R ENCLOSURES.

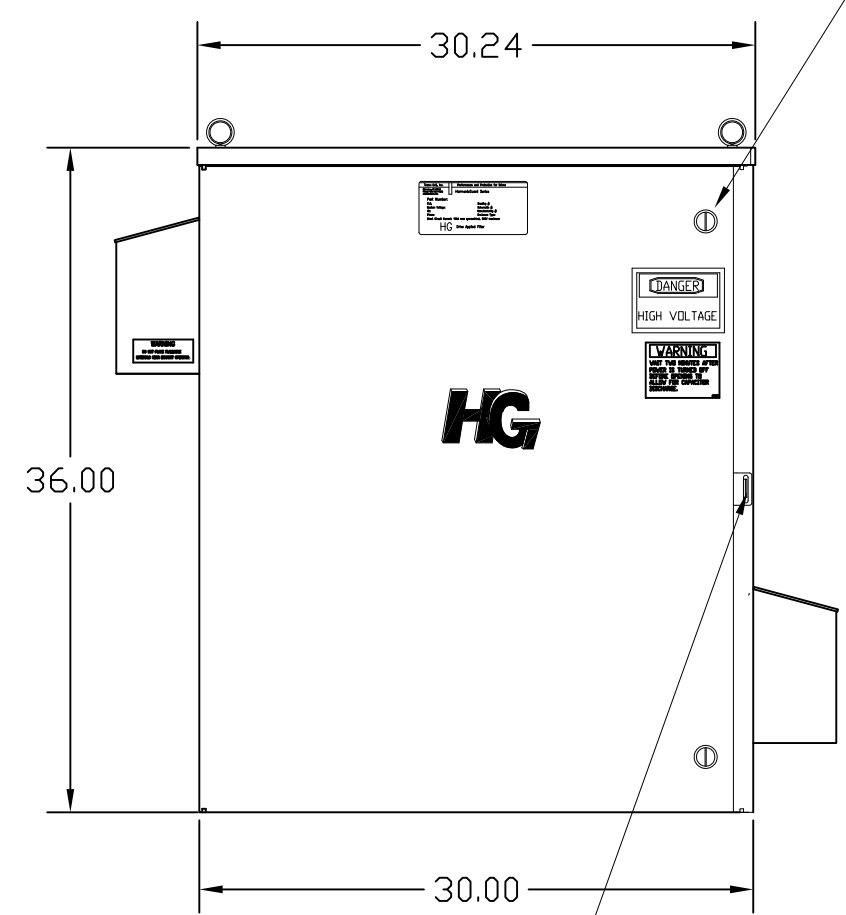
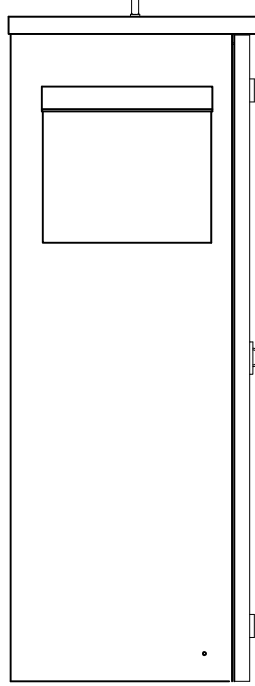
SEE DWG# 26757 FOR SCHEMATIC



SIDE VIEW

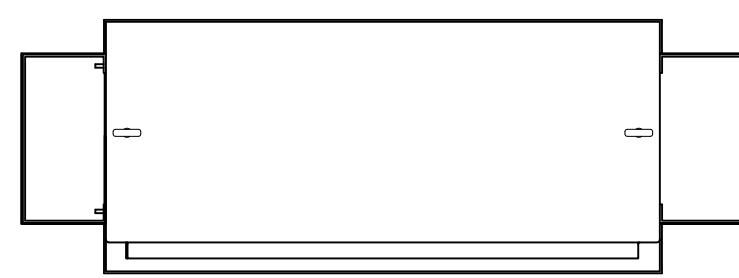


INSIDE DOOR

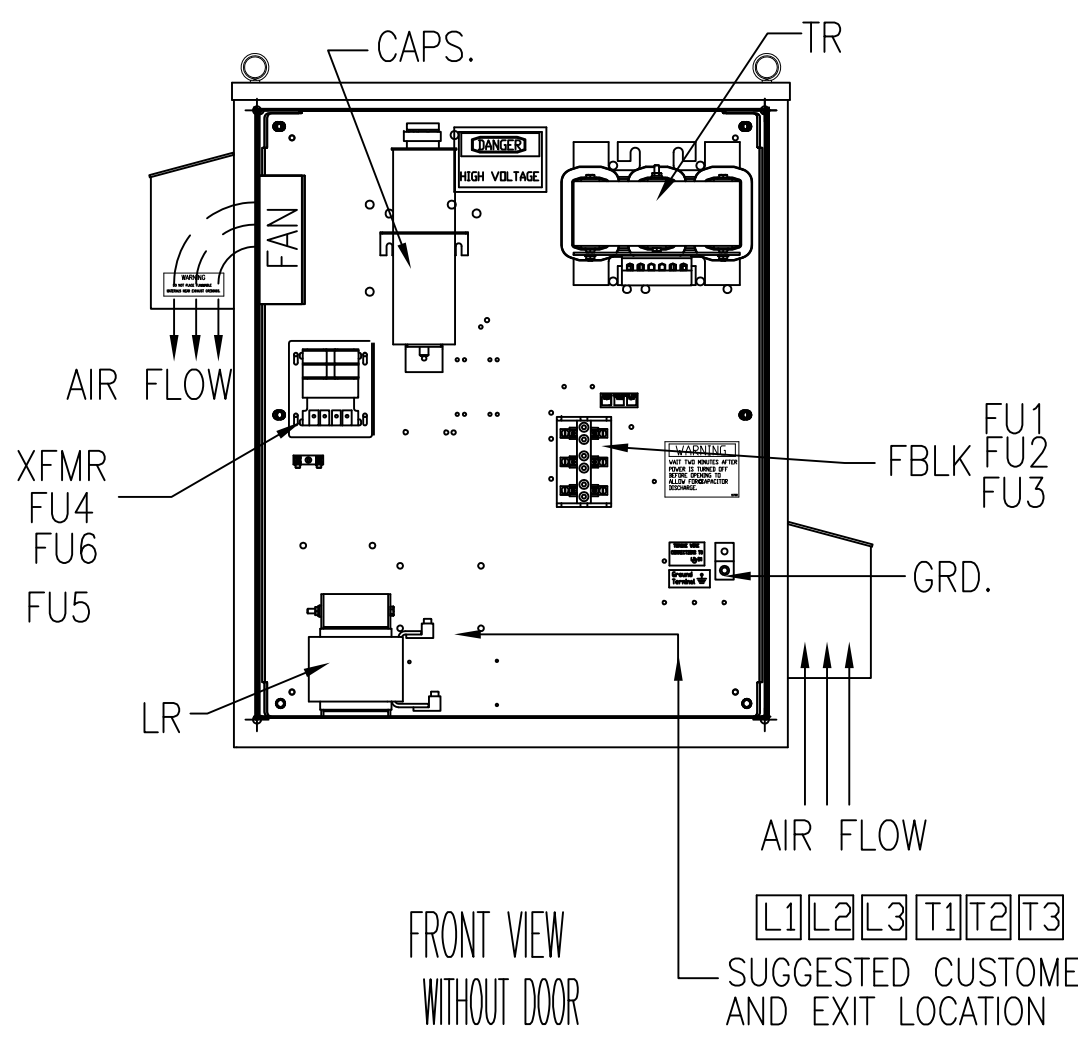
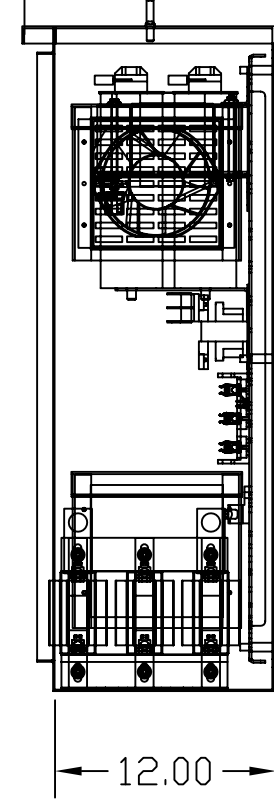


1/4 TURN LATCH 2 PLACES.

HASP AND STAPLE FOR PADLOCKING.



13.73 REF. SIDE VIEW



FRONT VIEW WITHOUT DOOR

SUGGESTED CUSTOMER WIRE ENTRY AND EXIT LOCATION

UNIT SPECIFICATIONS:					
KVAR	HARMONIC	VOLT	HZ	PHASE	HP
30	5TH	480	60	3	100
ENCLOSURE	UL TYPE 3R				
COLOR	WHITE				
APPROX.WT. LBS.	269				

SYMBOL	TCI PART NUMBER
LR	KDRJ1T
TR	KTR30A65HG
CAP1, 2 (15 KVAR)	27608
XFMR.	23896
Fu1, 2, 3	11006
Fu4,6	24009
Fu5	17567

ALTERNATE	TCI PART NUMBER
CAP1, 2 (15 KVAR)	KCAP15A6B

GROUND LUG:  
WIRE RANGE: 2/0 TO #6 AWG.  
TIGHTENING TORQUE 120 IN-LB.

CUSTOMER CONNECTION:  
WIRE RANGE: 2/0 TO #6 AWG.  
TIGHTENING TORQUE 120 IN-LB.

TCI, LLC CLAIMS PROPRIETARY RIGHTS IN THE MATERIAL HEREIN DISCLOSED. IT IS SUPPLIED WITHOUT PREJUDICE TO ANY PATENT RIGHTS OF TCI AND MAY NOT BE REPRODUCED OR USED TO MANUFACTURE ANYTHING SHOWN THEREIN WITHOUT WRITTEN PERMISSION FROM TCI.				TOLERANCES (EXCEPT AS NOTED) DECIMAL	W132 N10611 Grant Drive Germantown, WI 53022 HG100AW03ST, 100HP 480/3/60 UL TYPE 3R DRN. BY DSW DATE 8/21/08 DWG. NO. 103620DG SCALE TO FIT SIZE C SHT.1 OF 1
				.XX ±.12	
				.XXX±.06	
				FRACTIONAL ± 1/32	
	B 2900 CHG TO ASC CAPS	3/5/13	DSW	ANGULAR ± 1/2°	
	A 2641 ADD EYEBOLTS	10/13/09	DSW		
	NO REVISION				