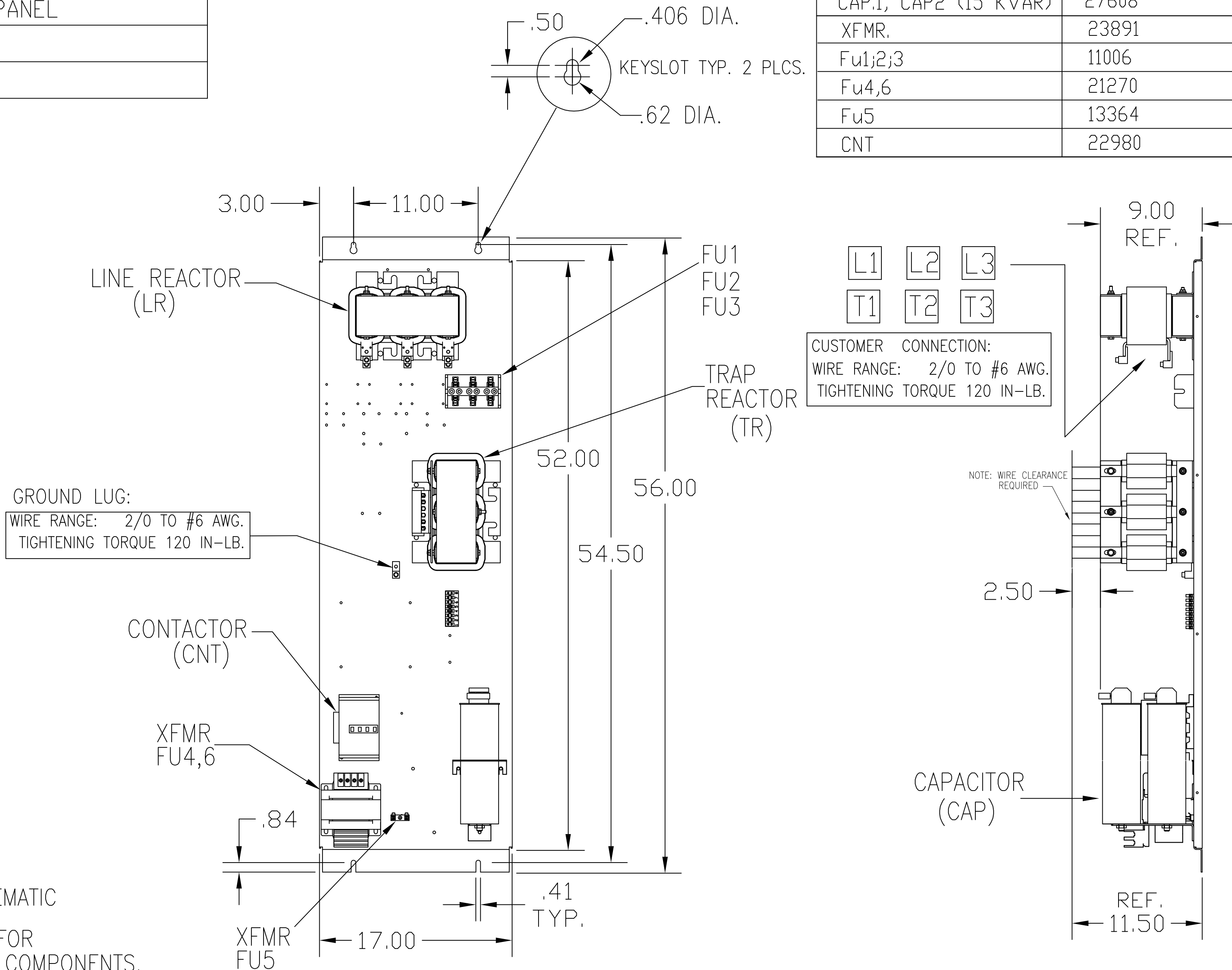
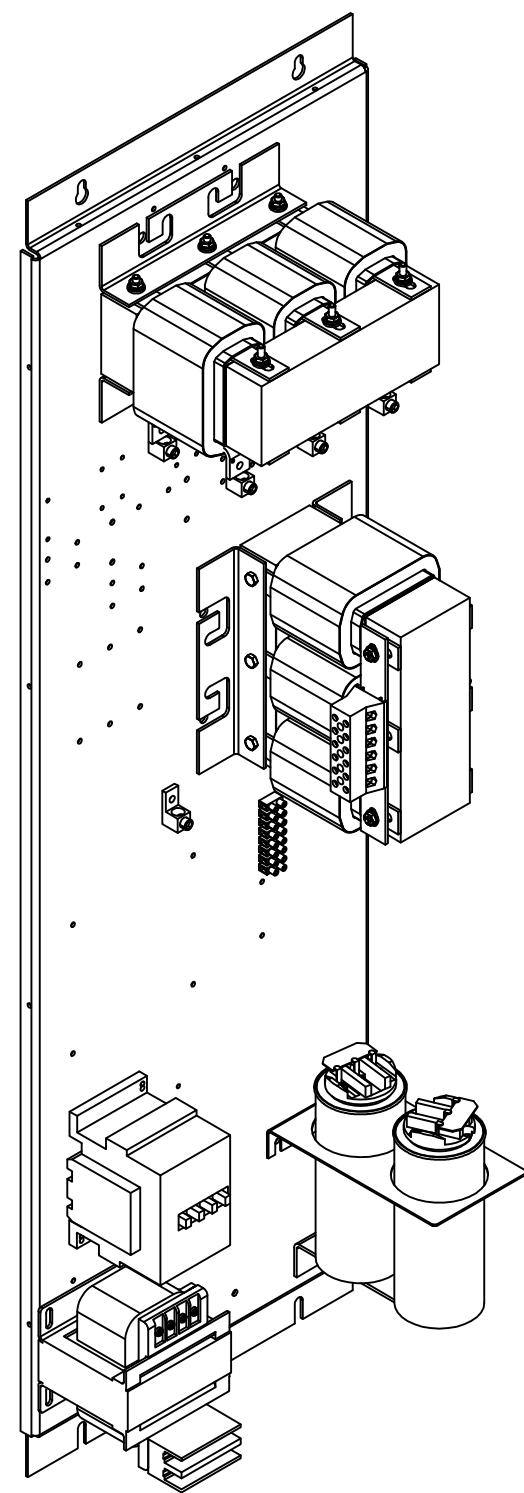


| UNIT SPECIFICATIONS: | | | | | |
|----------------------|----------|------------------|----|-------|-----|
| KVAR | HARMONIC | VOLT | HZ | PHASE | HP |
| 30 | 5TH | 480 | 60 | 3 | 100 |
| ENCLOSURE | | WHITE OPEN PANEL | | | |
| APPROX.WT. LBS. | | 205 | | | |

| SYMBOL | TCI PART NUMBER |
|------------------------|-----------------|
| LR | KDRJ1T |
| TR | KTR30A65HG |
| CAP.1, CAP.2 (15 KVAR) | 27608 |
| XFMR. | 23891 |
| Fu1,2,3 | 11006 |
| Fu4,6 | 21270 |
| Fu5 | 13364 |
| CNT | 22980 |



SEE DWG# 26690 FOR SCHEMATIC

CUSTOMER IS RESPONSIBLE FOR PROPER COOLING OF FILTER COMPONENTS. CAPACITORS MAXIMUM AMBIENT 50°C.

CUSTOMER IS RESPONSIBLE FOR INSTALLATION TO MEET ALL NATIONAL AND LOCAL ELECTRICAL CODES.

| | | | | | |
|--------|----------------|---------|-----|------------------------------|------------------------------------------------------------------------|
| | | | | TOLERANCES (EXCEPT AS NOTED) | 7878 N. 86th STREET MILWAUKEE, WI 53224 |
| | | | | DECIMAL | |
| | | | | .XX ± .03 | HG100AW00STC, 100HP 480/3/60, OPEN, WITH CNT |
| | | | | .XXX ± .01 | |
| | | | | FRACTIONAL ± 1/32 | |
| C 2920 | ASC CAP CHANGE | 9/17/13 | MJS | ANGULAR ± 1/2° | DRN BY DSW DATE 7/3/08 DWG. NO. 103534DG SCALE NTS APRVD. SHT.1 OF1 |