

UNIT SPECIFICATIONS:					
KVAR	HARMONIC	VOLT	HZ	PHASE	HP
30	5TH	480	60	3	100
OPEN		GALVANIZED PANEL			
APPROX.WT. LBS.		185			

SYMBOL	TCI PART NUMBER
LR	KDRJ1T
TR	KTR30A65HG
CAP (15 KVAR)	27608
Fu1, 2, 3	11006

ALTERNATE	TCI PART NUMBER
CAP (15 KVAR)	KCAP15A6B


CUSTOMER CONNECTIONS
 WIRE RANGE-2/0-6
 TIGHTENING TORQUE 120 IN-LB.

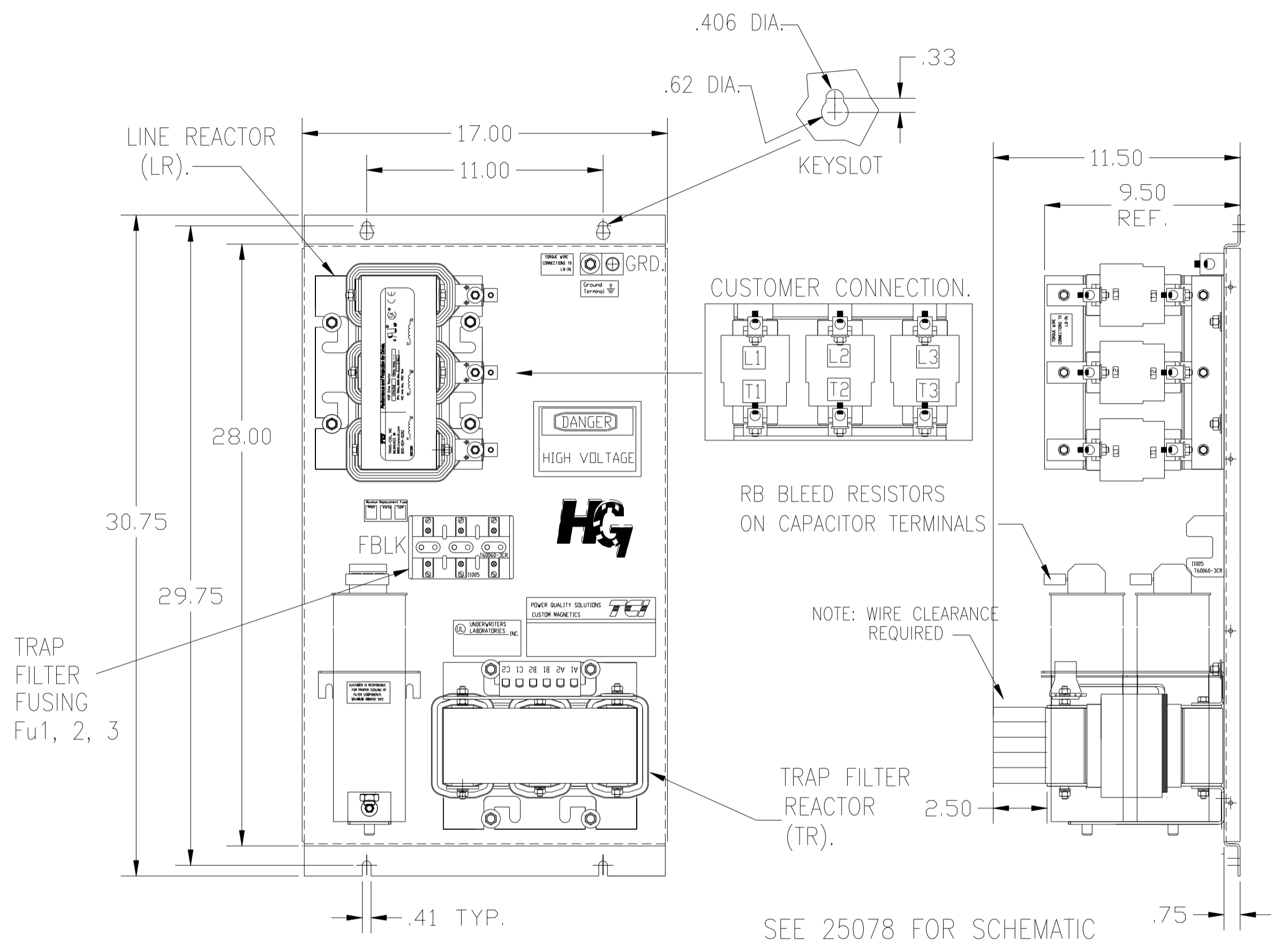
GROUND LUG:
 WIRE RANGE-2/0-6
 TIGHTENING TORQUE 120 IN-LB.

CUSTOMER IS RESPONSIBLE FOR PROPER
 COOLING OF FILTER COMPONENTS.
 CAPACITORS MAXIMUM AMBIENT 50°C

CUSTOMER IS RESPONSIBLE FOR INSTALLATION
 TO MEET ALL NATIONAL AND LOCAL ELECTRICAL CODES.

SEE 25078 FOR SCHEMATIC

				TOLERANCES (EXCEPT AS NOTED)	 7878 N. 86th STREET MILWAUKEE, WI 53224
				DECIMAL	
				.XX ± .03	
				.XXX ± .01	
B	2900 CHG TO ASC CAPS	2/18/13	DSW	FRACTIONAL ± 1/32	DRN. BY DSW DATE 03/04/05 DWG. NO. 102545DG SCALE TO FIT APRVD. B
△	2516, CAP WAS 16449	9/30/07	RJC	ANGULAR ± 1/2°	
NO	REVISION	DATE	BY		SHT. 1 OF 1



UNIT SPECIFICATIONS:					
KVAR	HARMONIC	VOLT	HZ	PHASE	HP
30	5TH	480	60	3	100
OPEN		GALVANIZED PANEL			
APPROX.WT. LBS.		185			
SYMBOL	TCI PART NUMBER				
LR	KDRJ1T				
TR	KTR30A65HG				
CAP (15 KVAR)	27608				
Fu1, 2, 3	11006				
ALTERNATE	TCI PART NUMBER				
CAP (15 KVAR)	KCAP15A6B				

CUSTOMER CONNECTIONS
 WIRE RANGE-2/0-6
 TIGHTENING TORQUE 120 IN-LB.
 GROUND LUG:
 WIRE RANGE-2/0-6
 TIGHTENING TORQUE 120 IN-LB.

CUSTOMER IS RESPONSIBLE FOR PROPER COOLING OF FILTER COMPONENTS.
 CAPACITORS MAXIMUM AMBIENT 50°C
 CUSTOMER IS RESPONSIBLE FOR INSTALLATION TO MEET ALL NATIONAL AND LOCAL ELECTRICAL CODES.

SEE 25078 FOR SCHEMATIC

				TOLERANCES (EXCEPT AS NOTED)		7878 N. 86th STREET MILWAUKEE, WI 53224	
				DECIMAL			
				.XX ± .03		HG100AW00ST, HG7 STANDARD 100 HP, 480/3/60, OPEN	
				.XXX ± .01			
B 2900 CHG TO ASC CAPS		2/18/13	DSW	FRACTIONAL		DRN. BY DSW DATE 03/04/05 DWG. NO. 102545DG	
A 2516, CAP WAS 16449		9/30/07	RJC	± 1/32			
NO REVISION		DATE	BY	ANGULAR		SCALE TO FIT APRVD. B SHT. 1 OF 1	
				± 1/2°			