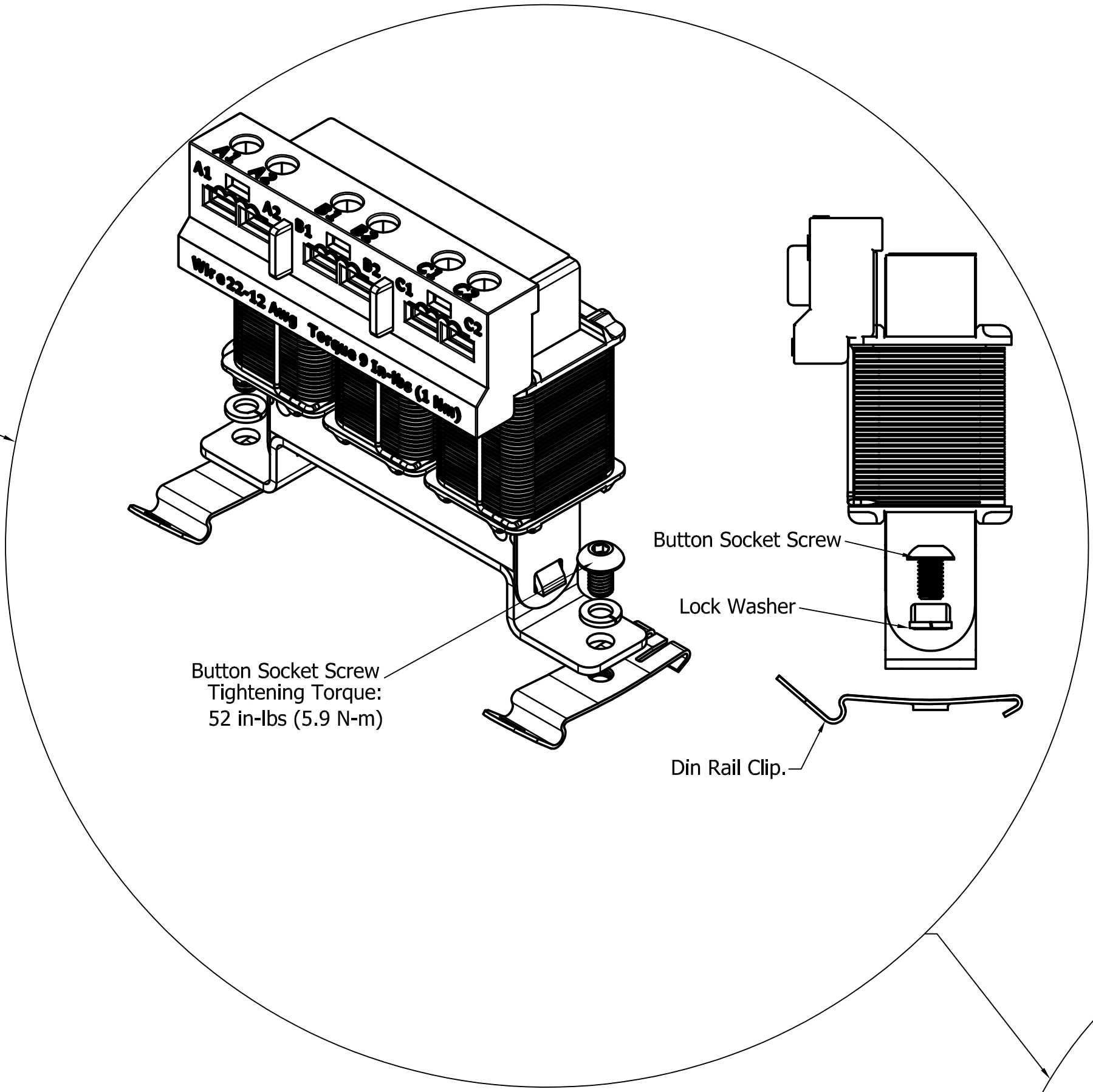
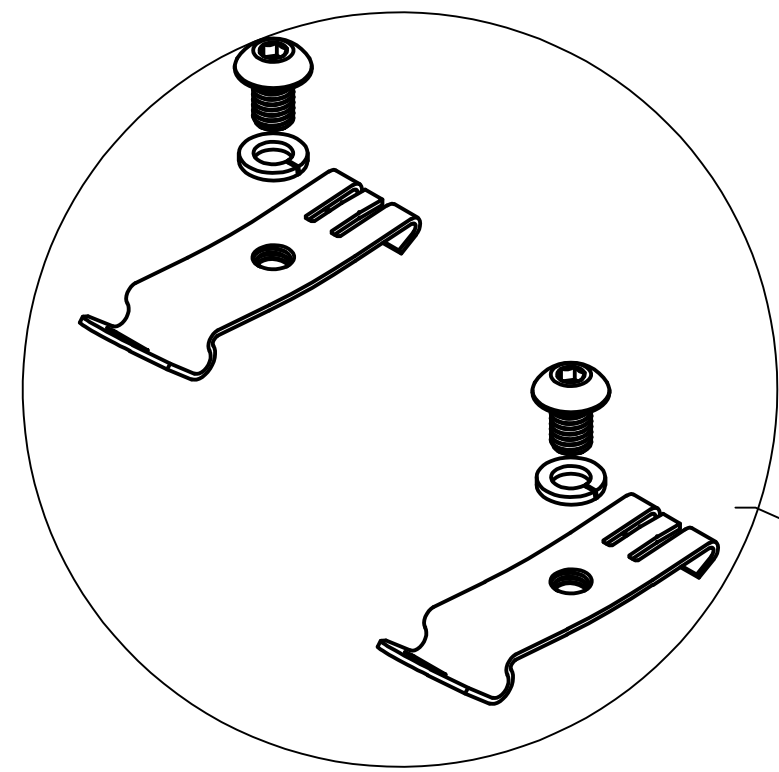
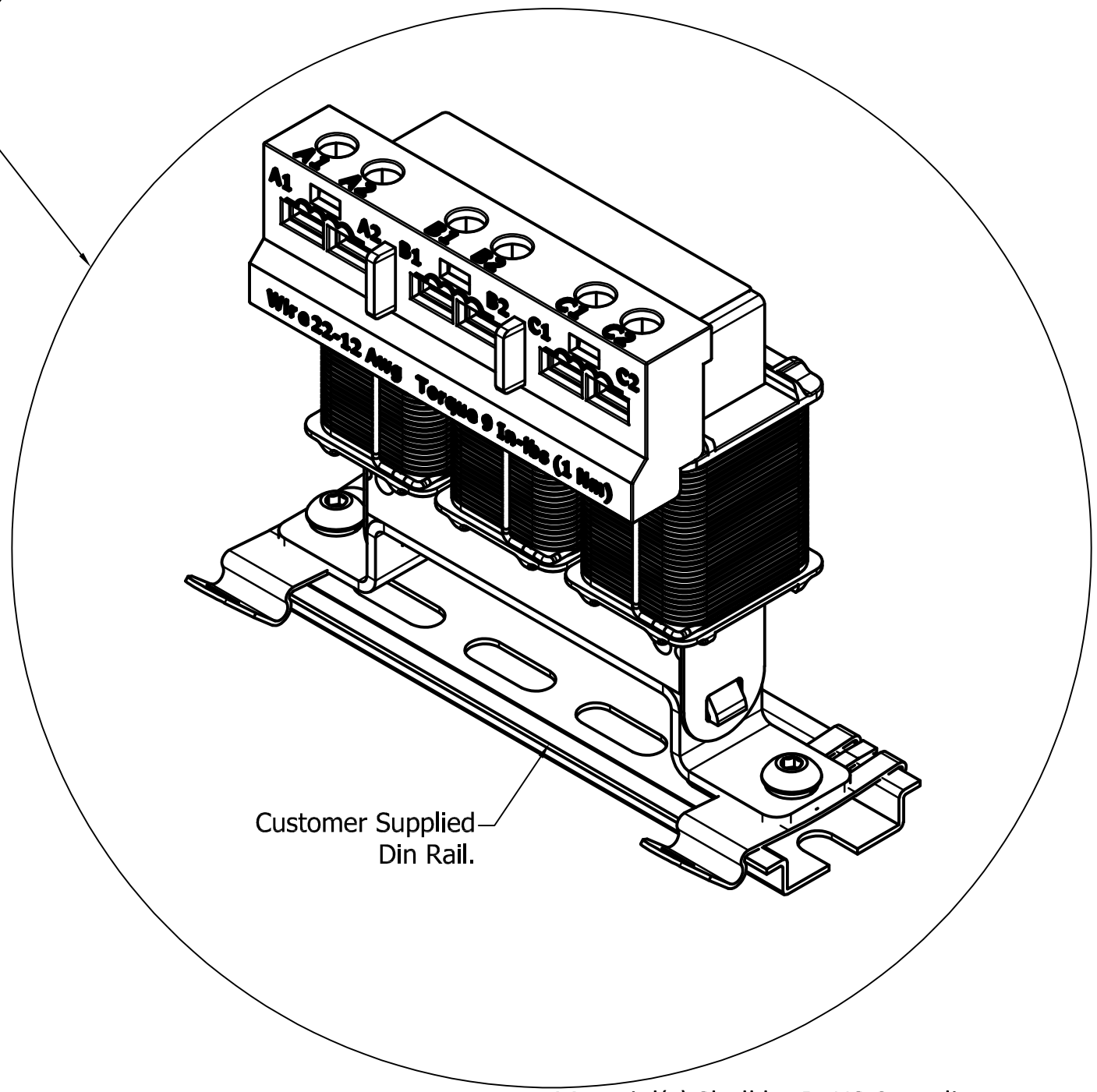


TCI PART# DR01



Button Socket Screw  
Tightening Torque:  
52 in-lbs (5.9 N-m)



Customer Is Responsible For Installation to  
Meet All National And Local Electrical Codes.

Material(s) Shall be RoHS Compliant

TCI, LLC CLAIMS PROPRIETARY RIGHTS IN THE MATERIAL HEREIN DISCLOSED. IT IS SUPPLIED WITHOUT PREJUDICE TO ANY PATENT RIGHTS OF TCI AND MAY NOT BE REPRODUCED OR USED TO MANUFACTURE ANYTHING SHOWN THEREIN WITHOUT WRITTEN PERMISSION FROM TCI.

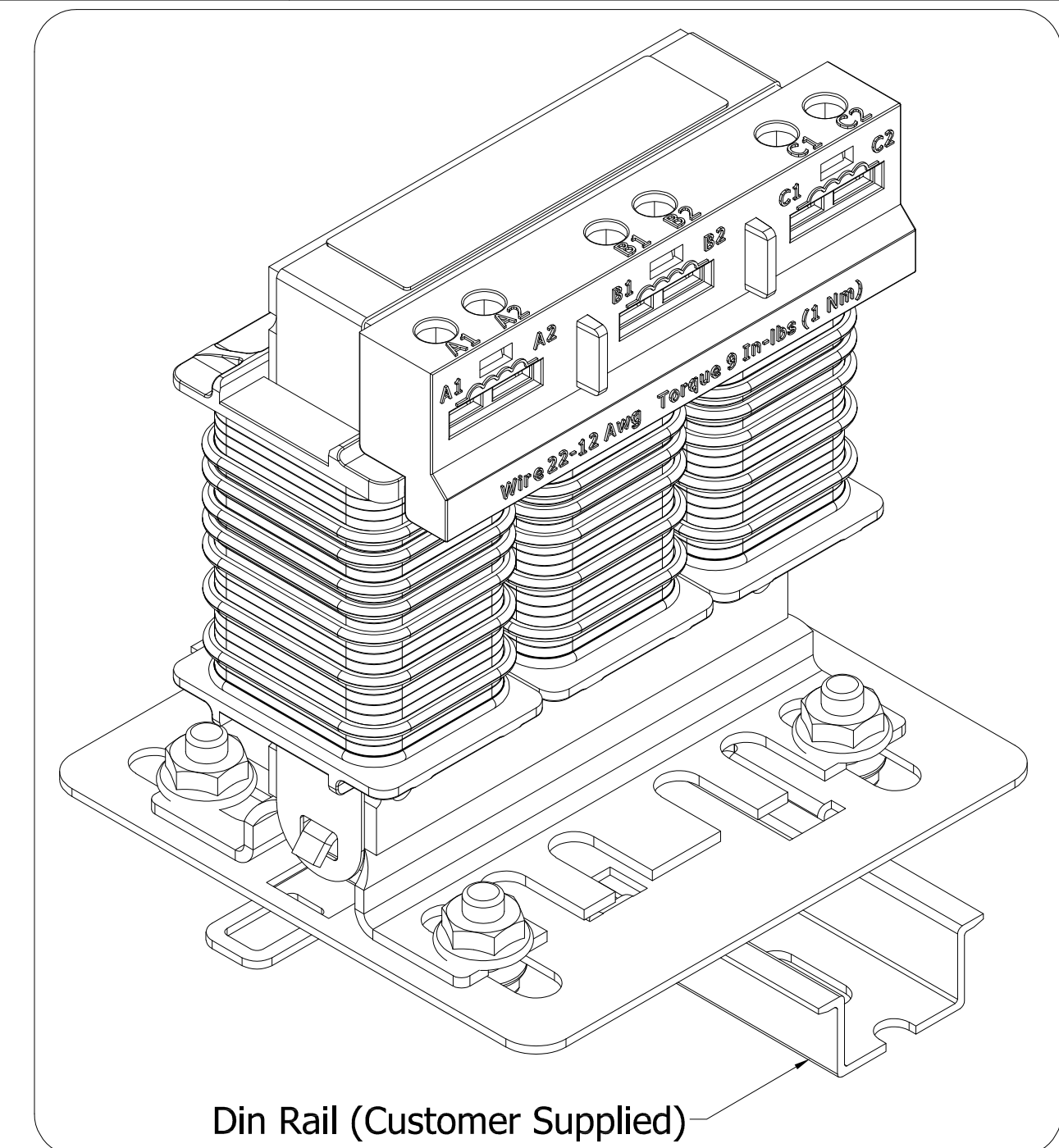
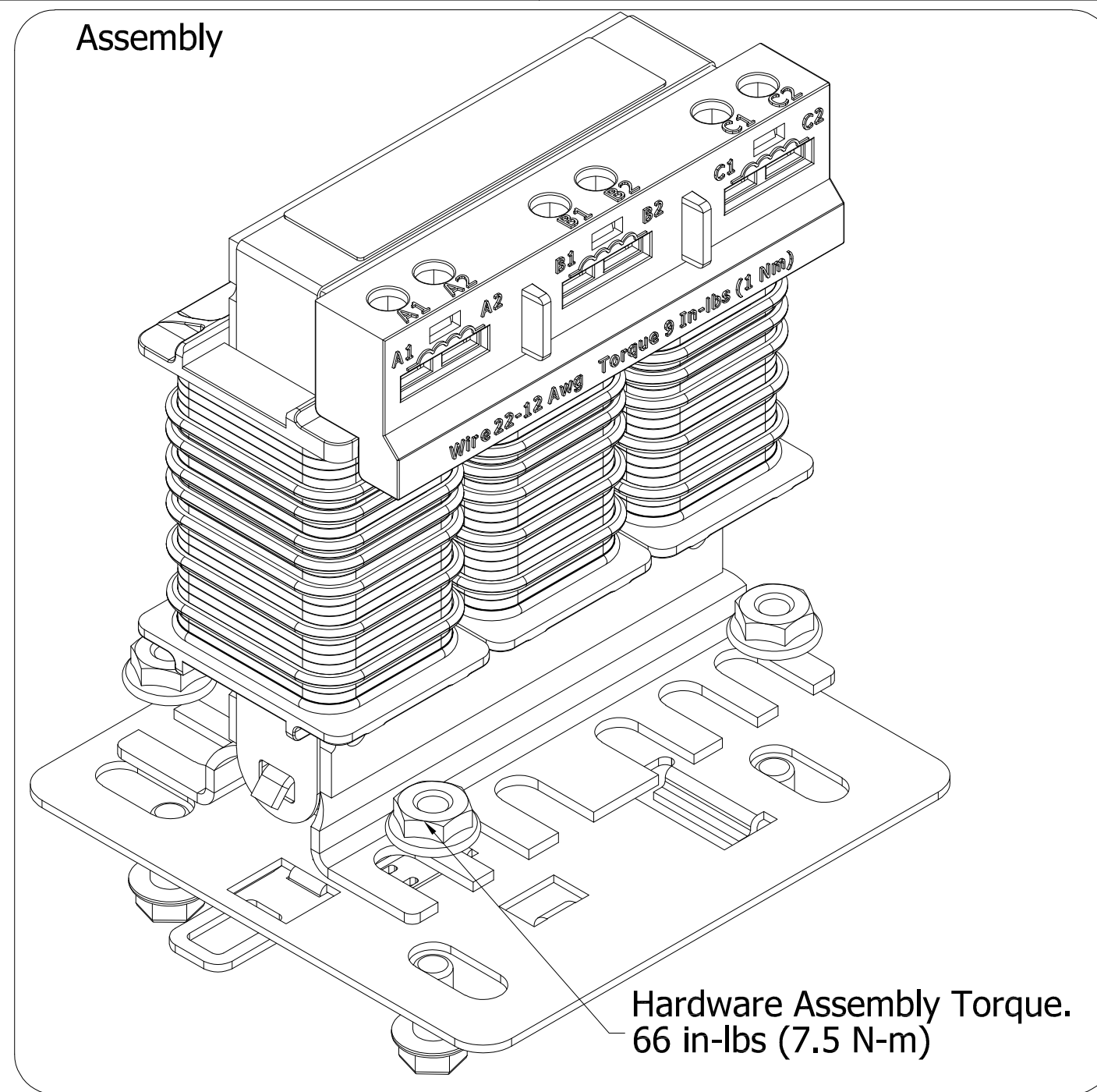
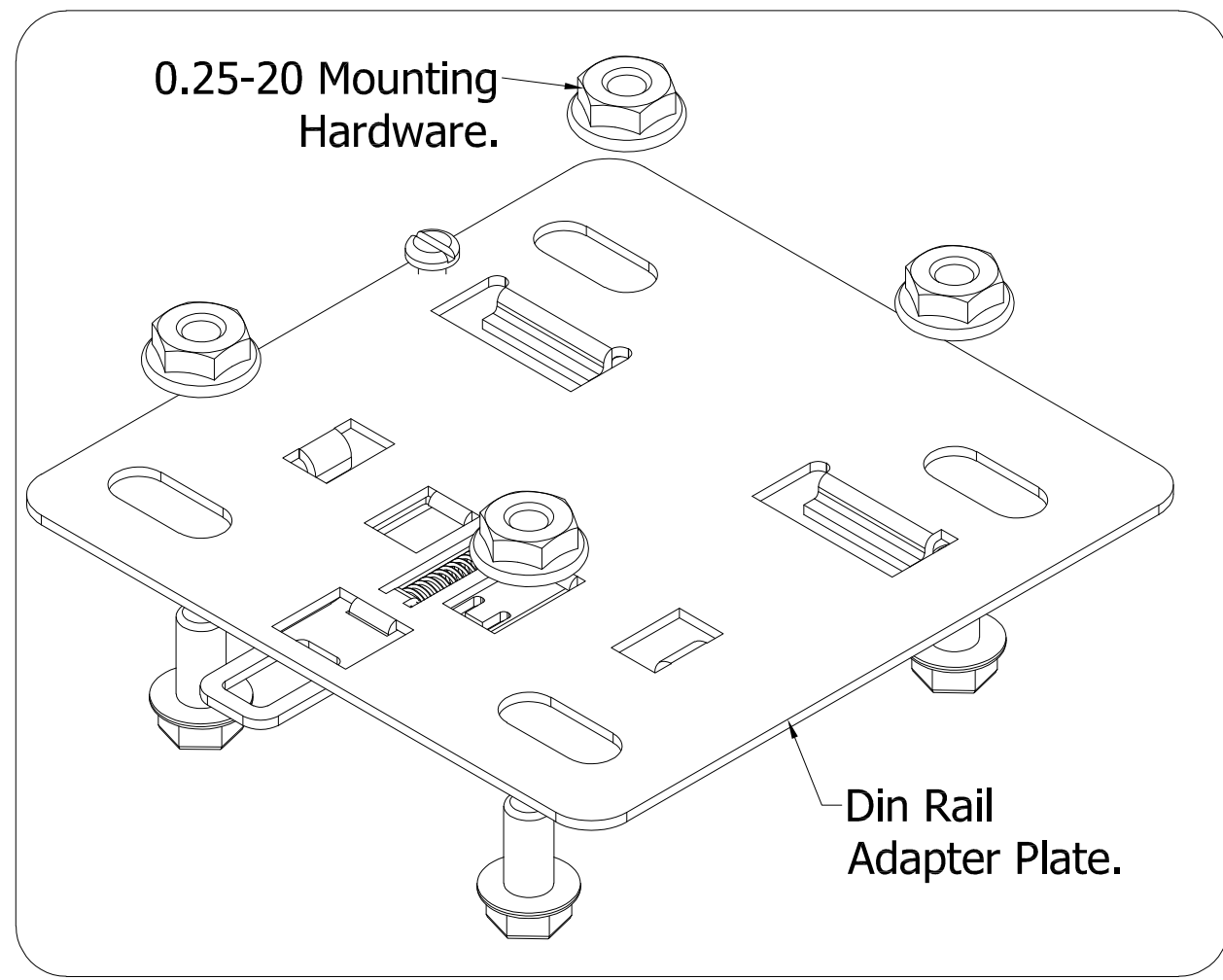
					TOLERANCES (EXCEPT AS NOTED)
					DECIMAL
					.XX +/- .25
					.XXX +/- .10
					FRACTIONAL
					+/- 1/16
					ANGULAR
					+/- 1°
NO	REVISION	DATE	BY		
A	AS BUILT	10/24/17	DSW		

**TCI** W132 N10611 Grant Drive  
 Germantown, WI. 53022

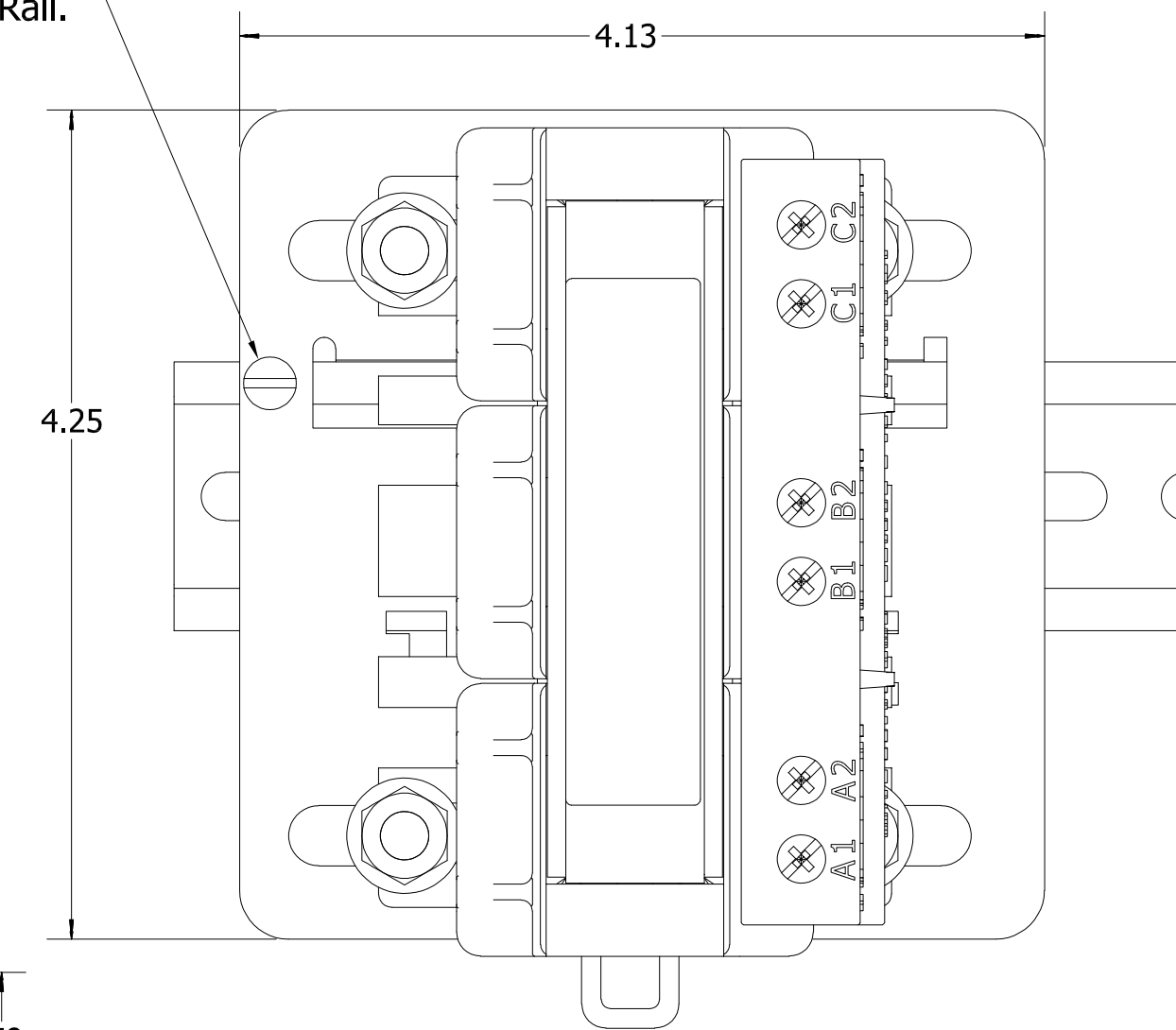
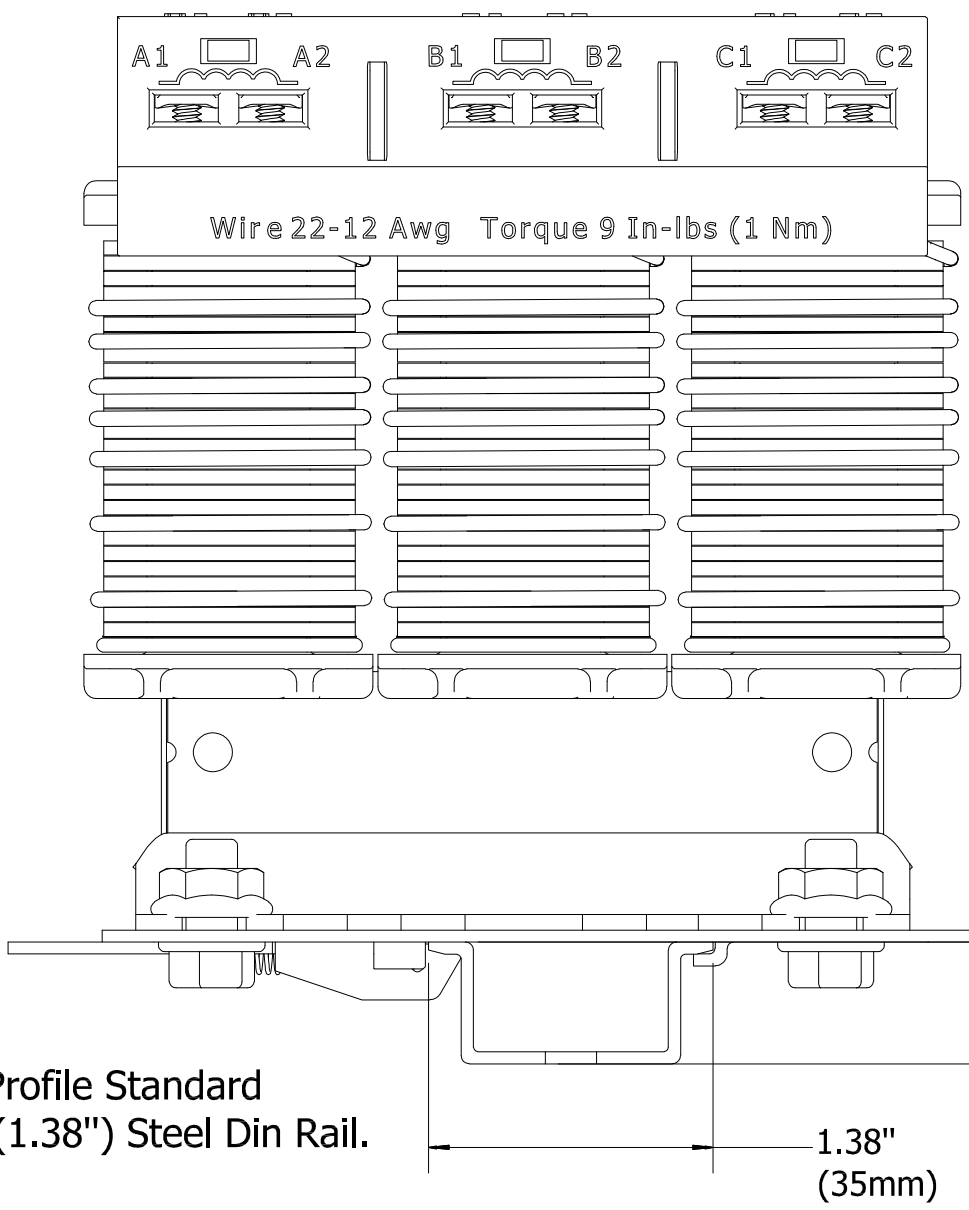
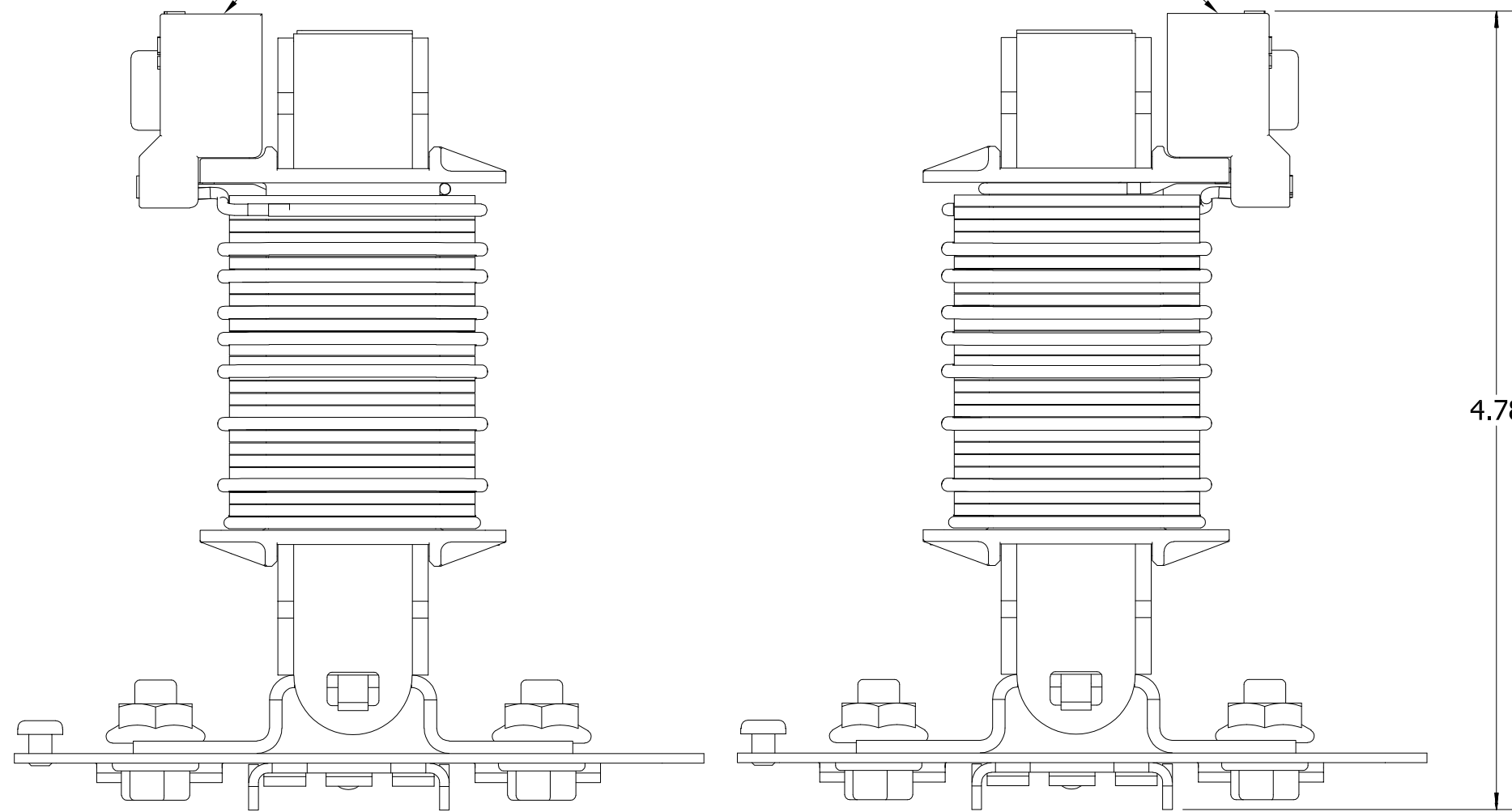
(DR01), KDRMA, Din Rail,  
 Mounting Clips And Hardware Kit.

DRN. BY: DSW DATE: 10/24/17 DWG. No.: 30830  
 SCALE: 1:1 APRVD. SHEET 1 OF 1

**TCI PART# DR02**



Reactor With Narrow Foot Mounted On Din Rail Plate. (Note: Reactor Can Be Mounted With Terminal Block To The Right Or Left).



Set Screw, Used To Prevent Assembly From Sliding On Din Rail.

TCI Recommends using, High Profile Standard or Heavy Duty Standard 35mm (1.38") Steel Din Rail.

TCI Recommends, taking precautions when shipping mounted Reactors.

Customer Is Responsible For Installation to Meet All National And Local Electrical Codes.

Material(s) Shall be RoHS Compliant

TCI, LLC CLAIMS PROPRIETARY RIGHTS IN THE MATERIAL HEREIN DISCLOSED. IT IS SUPPLIED WITHOUT PREJUDICE TO ANY PATENT RIGHTS OF TCI AND MAY NOT BE REPRODUCED OR USED TO MANUFACTURE ANYTHING SHOWN THEREIN WITHOUT WRITTEN PERMISSION FROM TCI.

TOLERANCES (EXCEPT AS NOTED)				
DECIMAL				
.XX	+/- .25			
.XXX	+/- .10			
FRACTIONAL				
+/- 1/16				
ANGULAR				
+/- 1°				
A	AS BUILT	11/15/17	DSW	
NO	REVISION	DATE	BY	

**TCI** W132 N10611 Grant Drive  
Germantown, WI. 53022

**(DR02), KDRAA, Din Rail Hardware Kit.**

DRN. BY: DSW  
SCALE: 1:1

DATE: 11/15/17  
APRVD.

DWG. No. 30853  
SHEET 1 OF 1

