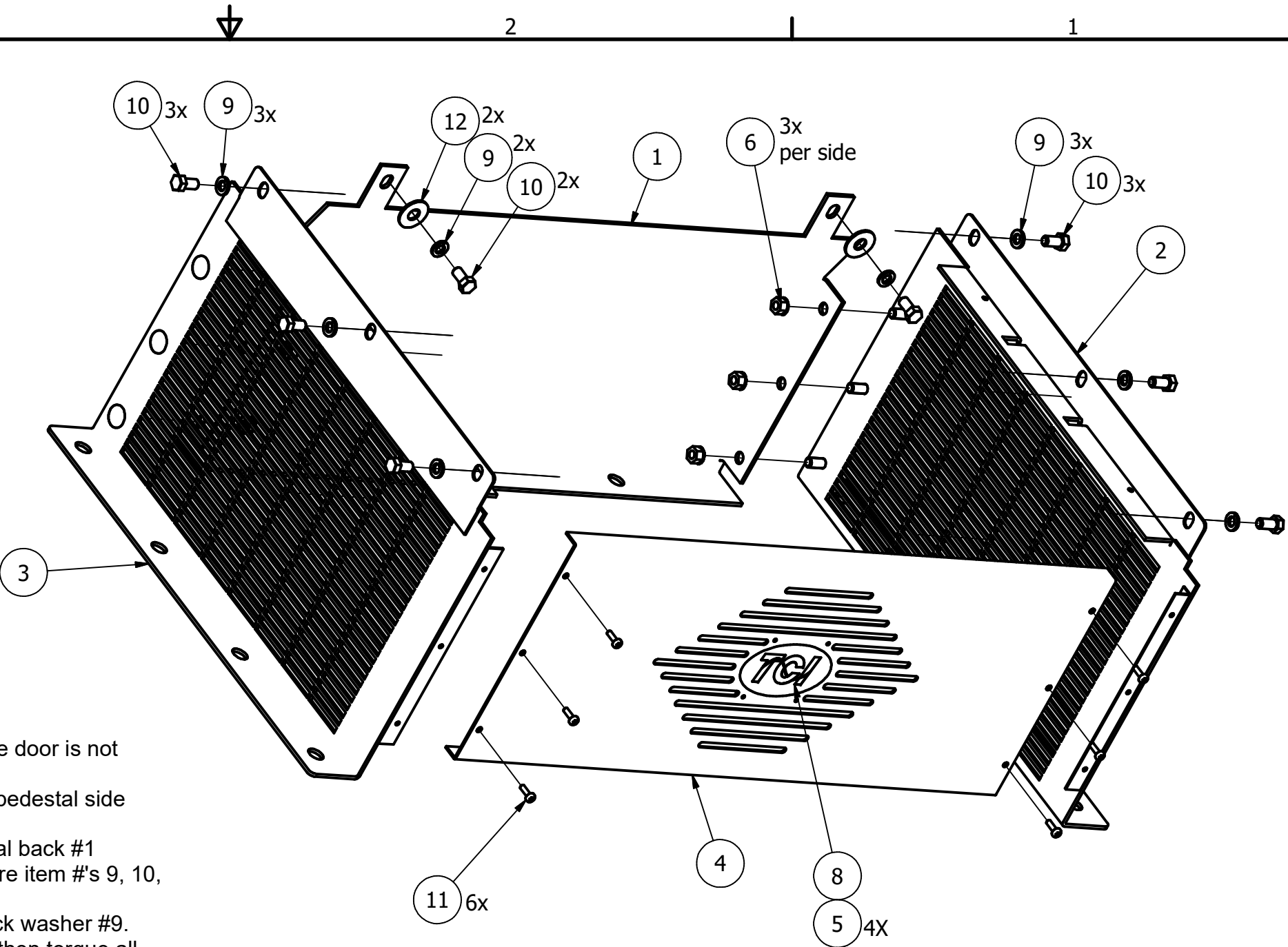



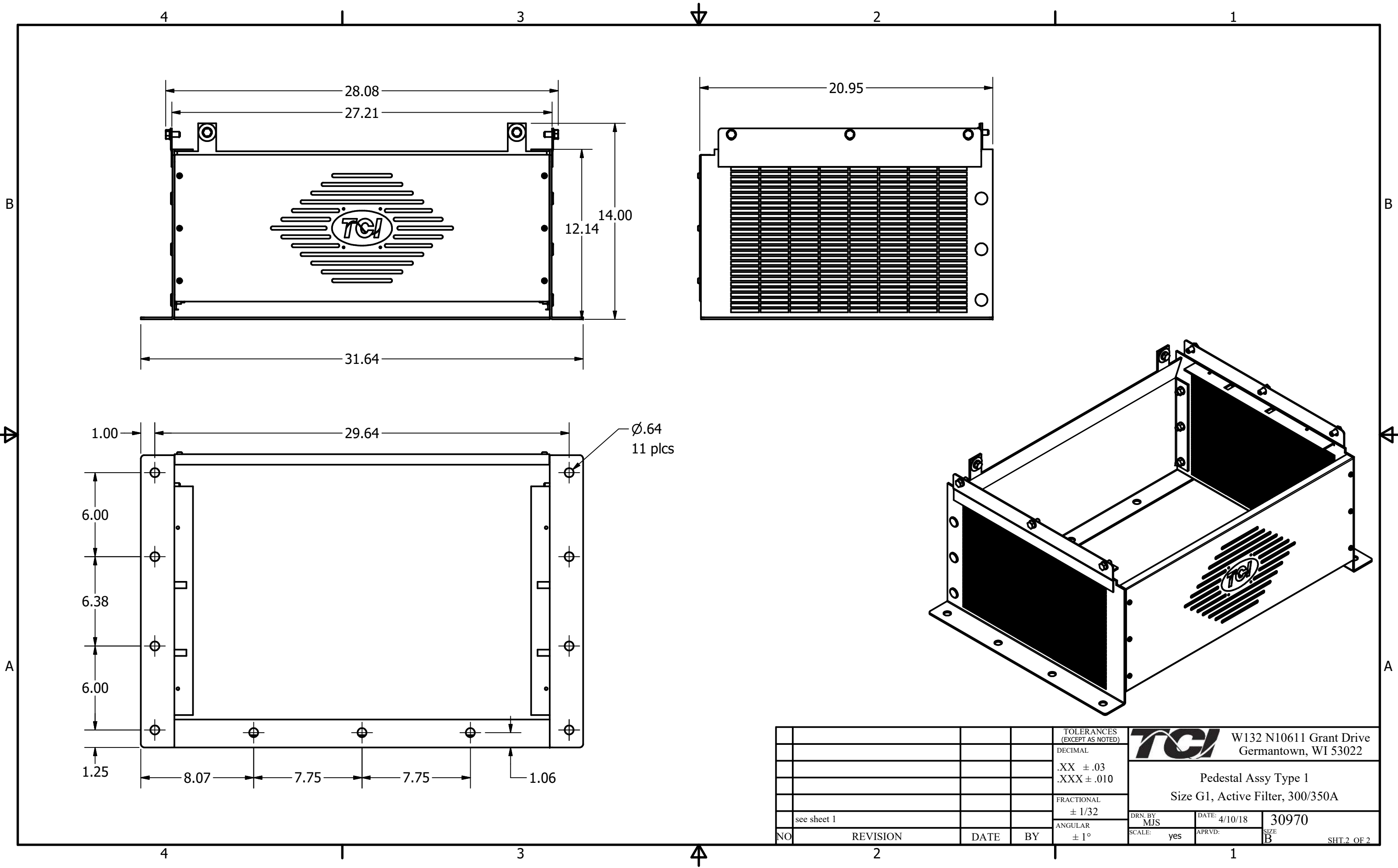
| PARTS LIST | | | |
|------------|--|-----|---------|
| ITEM | DESCRIPTION | QTY | TCI p/n |
| 1 | Back, Pedestal, 350A Active Filter | 1 | 30968 |
| 2 | Right Side, Pedestal, 350/700A Active Filter | 1 | 30966 |
| 3 | Left Side, Pedestal, 350/700A Active Filter | 1 | 30967 |
| 4 | Front Cover, Pedestal, 350A Active Filter | 1 | 30969 |
| 5 | Nut, Flange, 6-32, Stl | 4 | 3103 |
| 6 | Nut, KEPS, .38-16, Stl | 6 | 11626 |
| 7 | Plate, Label, Pedestal | 1 | 29199 |
| 8 | Label, TCI, Pedestal | 1 | 29256 |
| 9 | Helical Spring Lock Washer | 8 | 1556 |
| 10 | Bolt, HH, .38-16, .75, Stl | 8 | 1782 |
| 11 | Screw, PH, TORX Taptite 10-32X.63 Zn | 6 | 24826 |
| 12 | Washer, Fl, .44, Stl, USS | 2 | 11841 |


Assembly Instructions:

- 1.) Lay the enclosure/filter on its back.
- 2.) Open the door. Caution, the open door should be supported so the weight of the door is not hanging on the hinges.
- 3.) Place the pedestal back #1 on a flat surface, then slide the right & left (#2 & 3) pedestal side studs through the holes in the back. Loosely thread nuts #6 onto the 6 studs.
- 4.) Lift with two hands the assembled sides/back and slide the 2 tabs of the pedestal back #1 through the slots on the enclosure bottom. Secure it to back panel with 3/8 hardware item #'s 9, 10, & 12.
- 5.) Secure the pedestal sides to the enclosure sides with 3/8 inch bolts #10 and lock washer #9.
- 6.) Only finger tighten all 3/8 inch hardware for the sides and back. Once in place, then torque all 3/8 hardware to 250 in-lb.
- 7.) Carefully stand filter up and move into place using the lifting eyes located the top of the enclosure. WARNING: TIPPING HAZARD, assembled unit has high center of gravity, extreme care should be used until the filter is properly anchored to the floor.
- 8.) Anchor unit to floor using the four holes located on each side of the pedestal; refer to installation drawing #107579.
- 9.) Place label #8 on label plate #7. Use nuts #5 to mounting plate on inside of front cover.
- 10.) Install front cover using screws #11. CAUTION, damage can occur to cover by using any lifting devices under the front cover.
- 11.) For pedestal catalog #HGAF01G1.



| | | | | | | | |
|----|------------------------|--------|-----|---------------------------------|---|--|--|
| | | | | TOLERANCES (EXCEPT AS NOTED) |  W132 N10611 Grant Drive Germantown, WI 53022 | | |
| | | | | DECIMAL | | | |
| | | | | .XX ± .03 | Pedestal Assy Type 1 Size G1, Active Filter, 300/350A | | |
| | | | | .XXX ± .010 | | | |
| | | | | FRACTIONAL | DRN. BY: MJS DATE: 4/10/18 30970 | | |
| | | | | ± 1/32 | | | |
| | | | | ANGULAR | SCALE: yes APRVD: SIZE B SHT.1 OF 2 | | |
| | | | | ± 1° | | | |
| A | added sheet 2 mtg dims | 4/9/25 | MJS | | | | |
| NO | REVISION | DATE | BY | | | | |



| | | | | | | | |
|----|----------|------|----|---------------------------------|---|---------------|------------|
| | | | | TOLERANCES (EXCEPT AS NOTED) |  W132 N10611 Grant Drive Germantown, WI 53022 | | |
| | | | | DECIMAL | | | |
| | | | | .XX ± .03 | Pedestal Assy Type 1 Size G1, Active Filter, 300/350A | | |
| | | | | .XXX ± .010 | | | |
| | | | | FRACTIONAL | DRN. BY MJS | | |
| | | | | ± 1/32 | | | |
| | | | | ANGULAR | SCALE: yes | DATE: 4/10/18 | 30970 |
| NO | REVISION | DATE | BY | ± 1° | APRVD: | SIZE B | SHT.2 OF 2 |