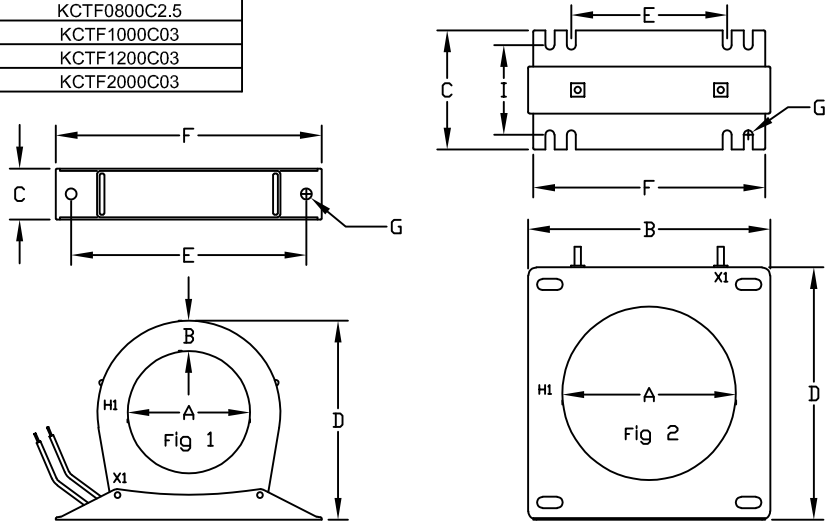
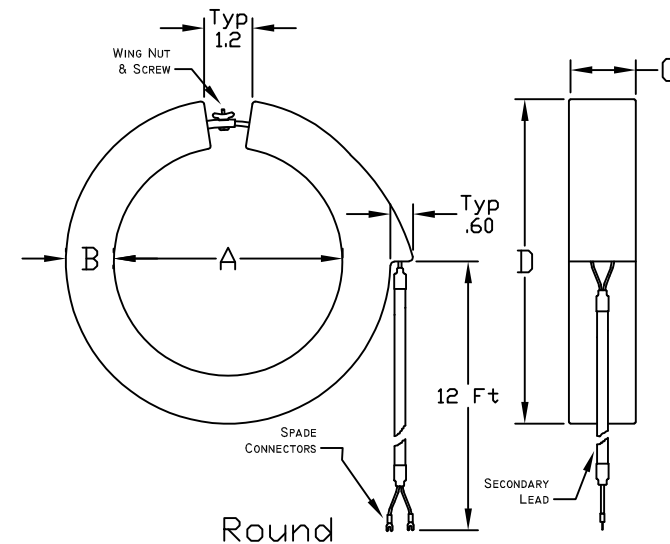


Catalog #	TCI Part #	Current Ratio	VA Rating	Burden Value (Ohms)	WT. (LBS)	Dimensions in Inches (mm)										Fig
						A	B	C	D	E	F	G	H	I		
KCTF0100C1.3	32472	100:5	5.0	0.2	1.28	1.25 (31.8)	1.13 (28.6)	1.25 (31.8)	3.74 (95)	3.88 (98.4)	4.50 (114.3)	0.14 (3.6)	N/A	N/A	1	
KCTF0200C1.3	32473	200:5	12.5	0.5	1.37	1.25 (31.8)	1.13 (28.6)	1.25 (31.8)	3.74 (95)	3.88 (98.4)	4.50 (114.3)	0.14 (3.6)	N/A	N/A	1	
KCTF0250C1.3	32474	250:5	12.5	0.5	1.39	1.25 (31.8)	1.13 (28.6)	1.25 (31.8)	3.74 (95)	3.88 (98.4)	4.50 (114.3)	0.14 (3.6)	N/A	N/A	1	
KCTF0300C1.3	32475	300:5	15.0	0.6	1.41	1.25 (31.8)	1.13 (28.6)	1.25 (31.8)	3.74 (95)	3.88 (98.4)	4.50 (114.3)	0.14 (3.6)	N/A	N/A	1	
KCTF0400C2.5	30991	400:5	15.0	0.6	1.47	2.5 (63.5)	1.0 (25.4)	1.25 (31.8)	4.82 (122.4)	5.75 (146.1)	6.50 (165.1)	0.28 (7.1)	N/A	N/A	1	
KCTF0500C2.5	27875	500:5	25.0	1.0	1.53	2.5 (63.5)	1.0 (25.4)	1.25 (31.8)	4.7 (119.4)	5.75 (146.1)	6.50 (165.1)	0.28 (7.1)	N/A	N/A	1	
KCTF0800C2.5	27996	800:5	35.0	1.4	1.61	2.5 (63.5)	1.0 (25.4)	1.25 (31.8)	4.7 (119.4)	5.75 (146.1)	6.50 (165.1)	0.28 (7.1)	N/A	N/A	1	
KCTF1000C03	27630	1000:5	10.0	0.4	0.65	3 (76.2)	0.74 (19.1)	1.25 (31.8)	4.7 (119.4)	5.75 (146.1)	6.50 (165.1)	0.28 (7.1)	N/A	N/A	1	
KCTF1200C03	27995	1200:5	10.0	0.4	0.73	3 (76.2)	0.74 (19.1)	1.25 (31.8)	4.7 (119.4)	5.75 (146.1)	6.50 (165.1)	0.28 (7.1)	N/A	N/A	1	
KCTF1600C4.3	28296	1600:5	15.0	0.6	app. 3.0	4.3 (109.2)	5.9 (149.9)	2.9 (73.7)	6.2 (157.5)	3.8 (96.5)	5.7 (144.8)	0.22 (5.6)	4.9 (124.5)	2.2 (55.9)	2	
KCTF2000C03	27615	2000:5	15.0	0.6	1.10	3 (76.2)	0.74 (19.1)	1.25 (31.8)	4.7 (119.4)	5.75 (146.1)	6.50 (165.1)	0.28 (7.1)	N/A	N/A	1	
KCTF2500C4.3	27997	2500:5	20.0	0.8	app. 3.0	4.3 (109.2)	5.9 (149.9)	2.9 (73.7)	6.2 (157.5)	3.8 (96.5)	5.7 (144.8)	0.22 (5.6)	4.9 (124.5)	2.2 (55.9)	2	
KCTF0800C4.3	28411	800:5	30.0	1.2	app. 3.0	4.3 (109.2)	5.9 (149.9)	2.9 (73.7)	6.2 (157.5)	3.8 (96.5)	5.7 (144.8)	0.22 (5.6)	4.9 (124.5)	2.2 (55.9)	2	
KCTF1000C4.3	28513	1000:5	30.0	1.2	app. 3.0	4.3 (109.2)	5.9 (149.9)	2.9 (73.7)	6.2 (157.5)	3.8 (96.5)	5.7 (144.8)	0.22 (5.6)	4.9 (124.5)	2.2 (55.9)	2	
KCTF2000C4.3	28334	2000:5	20.0	0.8	app. 3.0	4.3 (109.2)	5.9 (149.9)	2.9 (73.7)	6.2 (157.5)	3.8 (96.5)	5.7 (144.8)	0.22 (5.6)	4.9 (124.5)	2.2 (55.9)	2	

Catalog #	Replaced with
KCTF0400B2.5	KCTF0400C2.5
KCTF0500B03	KCTF0500C2.5
KCTF0800B2.5	KCTF0800C2.5
KCTF1000B03	KCTF1000C03
KCTF1200B03	KCTF1200C03
KCTF2000B03	KCTF2000C03



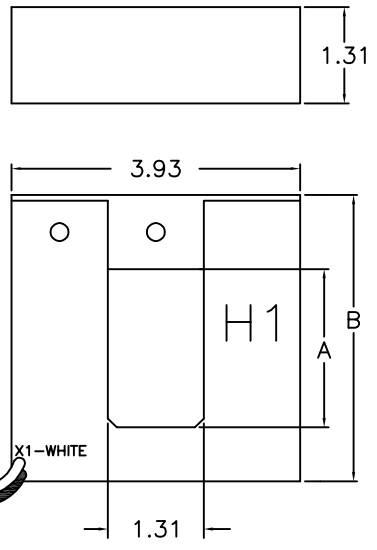
Solid Core



Round

Average Weight	4"	6"	8"	11"	18"
	4.0 lbs.	6.0 lbs.	7.0 lbs.	9.0 lbs.	17.0 lbs.

Catalog #	TCI Part #	Current Ratio	VA Rating	Burden Value (Ohms)	Dimensions in Inches (mm)			
					A	B	C	D
KCTF0200B04	27610	200:5	2.0	0.08	4 (101.6)	1 1/4 (31.8)	1 1/2 (38.1)	6 1/2 (165.1)
KCTF0300B04	29559	300:5	2.0	0.08	4 (101.6)	1 1/4 (31.8)	1 1/2 (38.1)	6 1/2 (165.1)
KCTF0400B04	28058	400:5	2.0	0.08	4 (101.6)	1 1/4 (31.8)	1 1/2 (38.1)	6 1/2 (165.1)
KCTF0500B04	28725	500:5	3.0	0.12	4 (101.6)	1 1/4 (31.8)	1 1/2 (38.1)	6 1/2 (165.1)
KCTF0500B06	25570	500:5	3.0	0.12	6 (152.4)	1 1/4 (31.8)	1 1/2 (38.1)	8 1/2 (215.9)
KCTF0600B06	28330	600:5	5.0	0.2	6 (152.4)	1 1/4 (31.8)	1 1/2 (38.1)	8 1/2 (215.9)
KCTF0600B04	28059	600:5	5.0	0.2	4 (101.6)	1 1/4 (31.8)	1 1/2 (38.1)	6 1/2 (165.1)
KCTF0800B04	28060	800:5	5.0	0.2	4 (101.6)	1 1/4 (31.8)	1 1/2 (38.1)	6 1/2 (165.1)
KCTF1000B04	25583	1000:5	5.0	0.2	4 (101.6)	1 1/4 (31.8)	1 1/2 (38.1)	6 1/2 (165.1)
KCTF1000B06	26726	1000:5	5.0	0.2	6 (152.4)	1 1/4 (31.8)	1 1/2 (38.1)	8 1/2 (215.9)
KCTF1200B04	28081	1200:5	5.0	0.2	4 (101.6)	1 1/4 (31.8)	1 1/2 (38.1)	6 1/2 (165.1)
KCTF1200B06	29620	1200:5	5.0	0.2	6 (152.4)	1 1/4 (31.8)	1 1/2 (38.1)	8 1/2 (215.9)
KCTF1200B08	32252	1200:5	5.0	0.2	8 (203.2)	1 1/4 (31.8)	1 1/2 (38.1)	10 1/2 (266.7)
KCTF1500B04	28140	1500:5	15.0	0.6	4 (101.6)	1 1/4 (31.8)	1 1/2 (38.1)	6 1/2 (165.1)
KCTF1600B04	27754	1600:5	15.0	0.6	4 (101.6)	1 1/4 (31.8)	1 1/2 (38.1)	6 1/2 (165.1)
KCTF1600B06	27949	1600:5	15.0	0.6	6 (152.4)	1 1/4 (31.8)	1 1/2 (38.1)	8 1/2 (215.9)
KCTF1600B08	27953	1600:5	15.0	0.6	8 (203.2)	1 1/4 (31.8)	1 1/2 (38.1)	10 1/2 (266.7)
KCTF2000B04	26727	2000:5	25.0	1.0	4 (101.6)	1 1/4 (31.8)	1 1/2 (38.1)	6 1/2 (165.1)
KCTF2000B06	26728	2000:5	25.0	1.0	6 (152.4)	1 1/4 (31.8)	1 1/2 (38.1)	8 1/2 (215.9)
KCTF2000B08	30691	2000:5	25.0	1.0	8 (203.2)	1 1/4 (31.8)	1 1/2 (38.1)	10 1/2 (266.7)
KCTF2500B06	29053	2500:5	30.0	1.2	6 (152.4)	1 1/4 (31.8)	1 1/2 (38.1)	8 1/2 (215.9)
KCTF3000B06	25584	3000:5	30.0	1.2	6 (152.4)	1 1/4 (31.8)	1 1/2 (38.1)	8 1/2 (215.9)
KCTF4000B06	29473	4000:5	30.0	1.2	6 (152.4)	1 1/4 (31.8)	1 1/2 (38.1)	8 1/2 (215.9)
KCTF4000B08	32364	4000:5	30.0	1.2	8 (203.2)	1 1/4 (31.8)	1 1/2 (38.1)	10 1/2 (266.7)
KCTF5000B08	25585	5000:5	30.0	1.2	8 (203.2)	1 1/4 (31.8)	1 1/2 (38.1)	10 1/2 (266.7)
KCTF3000B08	28712	3000:5	30.0	1.2	8 (203.2)	1 1/4 (31.8)	1 1/2 (38.1)	10 1/2 (266.7)
KCTF3500B08	30380	3500:5	30.0	1.2	8 (203.2)	1 1/4 (31.8)	1 1/2 (38.1)	10 1/2 (266.7)
KCTF6000B11	31243	6000:5	30.0	1.2	11 (279.4)	1 1/4 (31.8)	1 1/2 (38.1)	13 1/2 (342.9)
KCTF6000B18	31244	6000:5	30.0	1.2	18 (457.2)	1 1/4 (31.8)	1 1/2 (38.1)	20 1/2 (520.7)
KCTF1000D04	32847	1000:1	15.0	15.0	4 (101.6)	1 1/4 (31.8)	1 1/2 (38.1)	6 1/2 (165.1)



Removable Leg

Catalog #	TCI Part #	Current Ratio	VA Rating	Burden Value (Ohms)	Dimensions in Inches (mm)	
					A	B
KCTF0100D01	32782	100:5	1.0	0.04	1.66 (40.6)	3.4 (86.4)
KCTF0150D01	32783	150:5	1.0	0.04	1.66 (40.6)	3.4 (86.4)
KCTF0200D01	32784	200:5	2.0	0.08	1.66 (40.6)	3.4 (86.4)
KCTF0250D01	32780	250:5	2.0	0.08	1.66 (40.6)	3.4 (86.4)
KCTF0300D01	32785	300:5	3.5	0.14	1.66 (40.6)	3.4 (86.4)
KCTF0400D01	32786	400:5	8.5	0.34	1.66 (40.6)	3.4 (86.4)
KCTF0200D02	32787	200:5	2.0	0.08	2.16 (54.9)	3.90 (99.1)
KCTF0300D02	32788	300:5	3.0	0.12	2.16 (54.9)	3.90 (99.1)
KCTF0400D02	32789	400:5	5.0	0.2	2.16 (54.9)	3.90 (99.1)
KCTF0500D02	32790	500:5	5.0	0.2	2.16 (54.9)	3.90 (99.1)
KCTF0600D02	32791	600:5	5.0	0.2	2.16 (54.9)	3.90 (99.1)
KCTF0800D02	32792	800:5	5.0	0.2	2.16 (54.9)	3.90 (99.1)

NOTES:

- 1.) FREQUENCY RANGE 50-400HZ
- 2.) THERMAL FACTOR 1.25 @ 30 DEG C 1.0 @ 55 DEG C
- 3.) INSULATION 10KV FULL WAVE
- 4.) CAUTION, OPEN SPLIT-CORE WITH A TWISTING MOTION ONLY.
- 5.) DIMENSIONS ARE IN INCHES (MM).

THE INFORMATION AND DESIGNS CONTAINED IN THIS DRAWING ARE CONFIDENTIAL AND THE PROPRIETARY PROPERTY OF ALLIED MOTION TECHNOLOGIES INC. AND ITS SUBSIDIARIES. NEITHER THIS DESIGN NOR ANY INFORMATION CONTAINED IN THIS DRAWING MAY BE REPRODUCED OR DISCLOSED TO OTHERS WITHOUT THE EXPRESS WRITTEN CONSENT OF ALLIED MOTION TECHNOLOGIES INC. AND ITS SUBSIDIARIES.

AH	Added removable legs	10/16/23	MJS	TOLERANCES (EXCEPT AS NOTED)
AG	fixed KCTF3000A04 TCI #	9/29/23	MJS	DECIMAL
AF	Added KCTF1000D04	3/1/23	MJS	.XX ± .04
AE	5995 updated Va values	7/14/22	MJS	.XXX ± .020
AD	REPLCD SOLID CORE "B"s	3/30/22	MJS	FRACTIONAL ± 1/32
AC	Added KCTF0600A02	9/28/21	MJS	ANGULAR ± 1/2°
NO	REVISION	DATE	BY	

**Tol** W132 N10611 Grant Drive  
Germantown, WI 53022  
© TCI, 2021

**Current Transformers**

DRN. BY: RHW DATE: 7/22/08 DWG. NO: 26461  
SCALE: NTS SIZE: B SHT. 1 OF 1

Average Weight	2 3/4"	4"
	6.00 lbs	8.00 lbs

Rectangular

Catalog #	TCI Part #	Current Ratio	VA Rating	Burden Value (Ohms)	Dimensions in Inches (mm)				
					A	B	C	D	E
KCTF0500A02	26729	500:5	3.0	0.12	2 3/4 (69.9)	6 5/8 (168.3)	5 1/2 (139.7)	9 3/8 (238.1)	1 1/2 (38.1)
KCTF0600A02	28796	600:5	5.0	0.2	2 3/4 (69.9)	6 5/8 (168.3)	5 1/2 (139.7)	9 3/8 (238.1)	1 1/2 (38.1)
KCTF0800A02	31505	800:5	2.0	0.08	2 3/4 (69.9)	6 5/8 (168.3)	5 1/2 (139.7)	9 3/8 (238.1)	1 1/2 (38.1)
KCTF1000A02	26691	1000:5	5.0	0.2	2 3/4 (69.9)	6 5/8 (168.3)	5 1/2 (139.7)	9 3/8 (238.1)	1 1/2 (38.1)
KCTF1200A02	27390	1200:5	5.0	0.2	2 3/4 (69.9)	6 5/8 (168.3)	5 1/2 (139.7)	9 3/8 (238.1)	1 1/2 (38.1)
KCTF1600A02	27755	1600:5	15.0	0.6	2 3/4 (69.9)	6 5/8 (168.3)	5 1/2 (139.7)	9 3/8 (238.1)	1 1/2 (38.1)
KCTF2000A02	26730	2000:5	25.0	1.0	2 3/4 (69.9)	6 5/8 (168.3)	5 1/2 (139.7)	9 3/8 (238.1)	1 1/2 (38.1)
KCTF3000A02	26731	3000:5	30.0	1.2	2 3/4 (69.9)	6 5/8 (168.3)	5 1/2 (139.7)	9 3/8 (238.1)	1 1/2 (38.1)
KCTF3000A04	31688	3000:5	30.0	1.2	4 (101.6)	11 (279.4)	6 1/2 (165.1)	13 3/8 (339.7)	1 1/2 (38.1)
KCTF4000A04	30701	4000:5	30.0	1.2	4 (101.6)	11 (279.4)	6 1/2 (165.1)	13 3/8 (339.7)	1 1/2 (38.1)
KCTF5000A04	26732	5000:5	30.0	1.2	4 (101.6)	11 (279.4)	6 1/2 (165.1)	13 3/8 (339.7)	1 1/2 (38.1)
KCTF6000A04	31245	6000:5	30.0	1.2	4 (101.6)	11 (279.4)	6 1/2 (165.1)	13 3/8 (339.7)	1 1/2 (38.1)

